



SD50 Pro IO-Link Device Parameter Data Add-On Instruction Guide, v4 November 25th, 2024

This document covers the installation and use of an Add-On Instruction (AOI) for the Logix Designer software package from Rockwell Automation. This AOI handles acyclic IO-Link commands to and from a SD50 Pro device. This AOI has nine User Defined Tag data types.

This IO-Link Device Parameter Data AOI is meant to be used alongside a v4 Banner IO-Link Master AOI.

Components

Banner_SD50_Param_v4_AOI.L5X

UDT's Packaged with the AOI

Banner_IOL_Port_v4
Banner_SD50_Add_Settings_v4
Banner_SD50_Custom_Color_v4
Banner_SD50_Display_Settings_v4
Banner_SD50_Measure_Base_Config_v4
Banner_SD50_Measure_General_Config_v4
Banner_SD50_Measure_Threshold_Config_v4
Banner_SD50_RD_v4
Banner_SD50_Timer_Settings
Banner_SD50_v4
Banner_SD50_WD_v4

NOTE:

This Banner IO-Link Device Parameter AOI is useless on its own.

It is intended to be linked to a v4 Banner IO-Link Master AOI to function.

Other AOIs Available Separately

Banner has AOI files for controlling other Banner IO-Link devices and for a variety of IO-Link Masters. Banner also has AOI files for easily handling Banner device Process Data.

Contents

1. **Installation Process 1**

2. **Configuring the AOI..... 3**

3. **Linking the Device AOI to the Master AOI 5**

4. **Using the Paired IO-Link Master and Device Parameter Data AOIs..... 6**

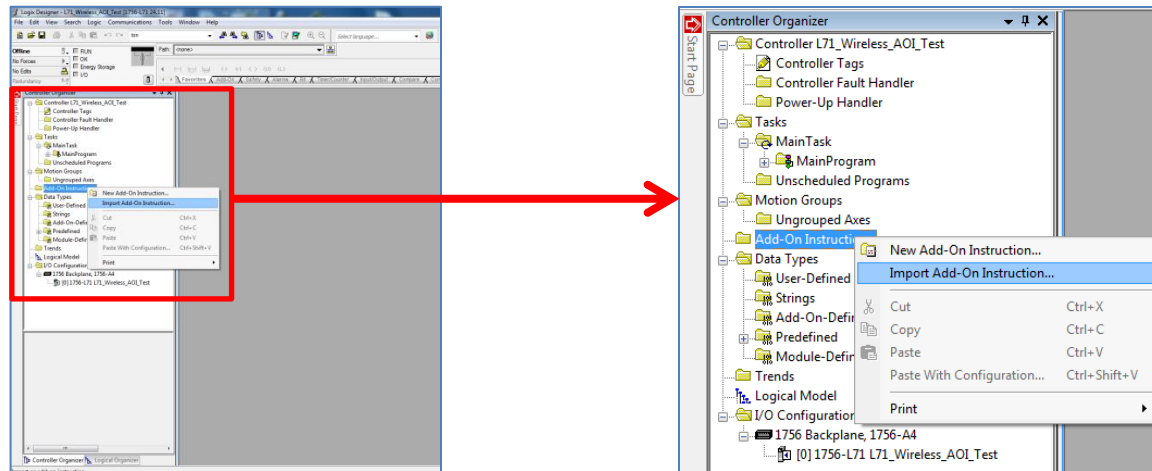
Appendix A Command Register 7

Appendix B AOI Resets..... 8

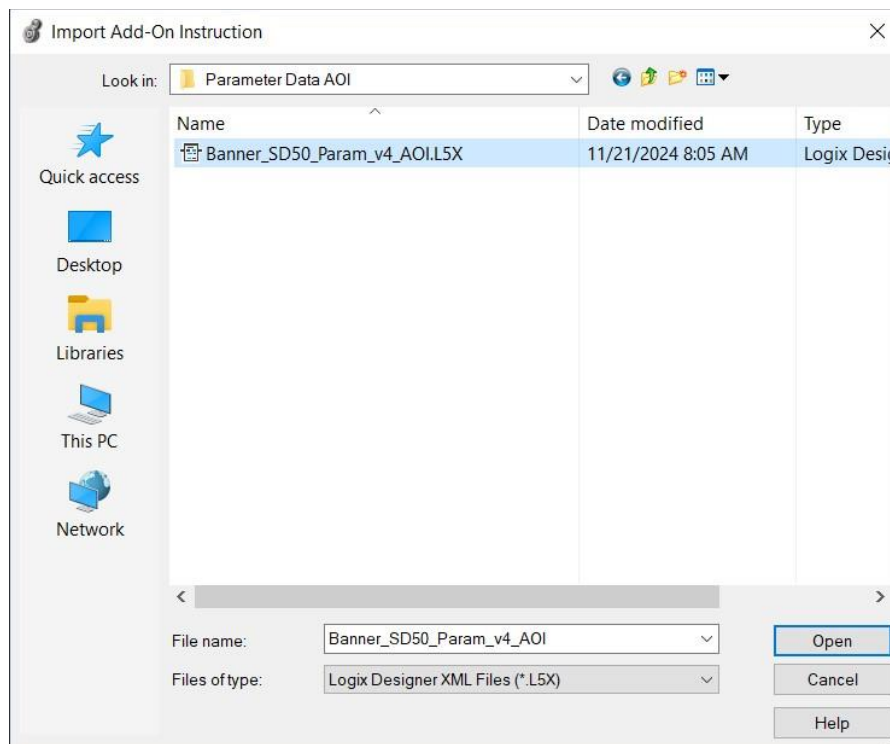
1. Installation Process

This section describes how to install the AOI in Logix Designer software.

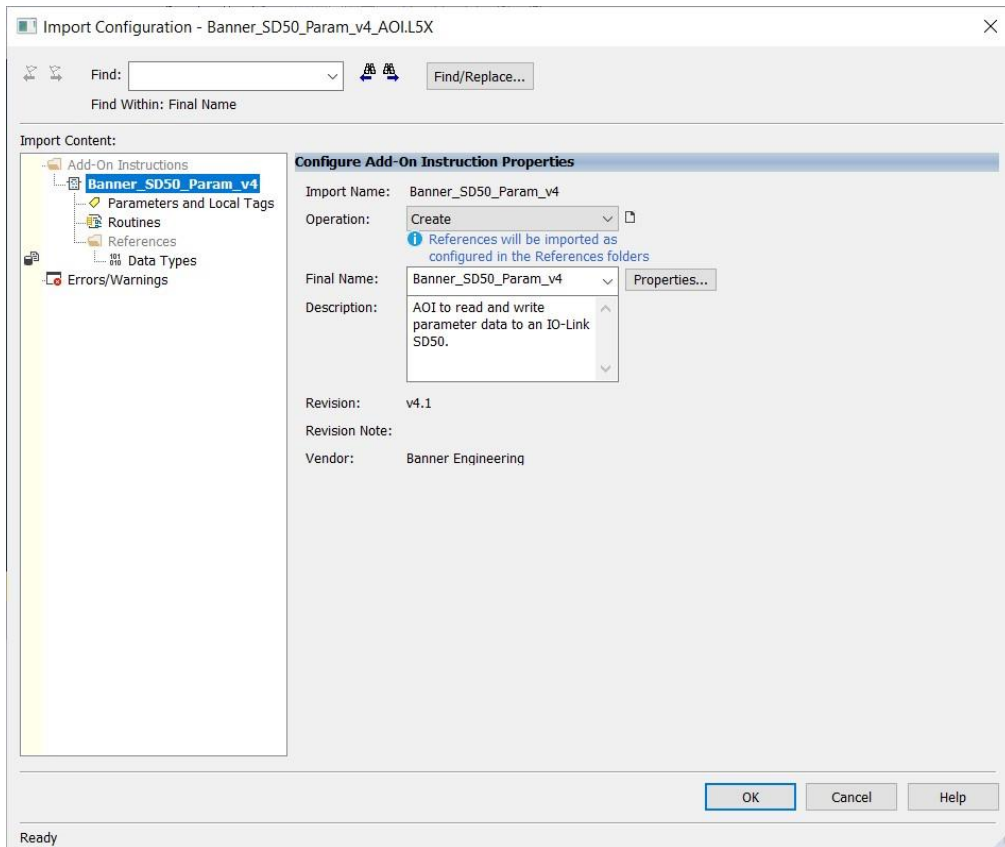
1. Open a project.
2. In the Controller Organizer window, right-click on the Add-On Instruction folder. Select the Import Add-On Instruction option.



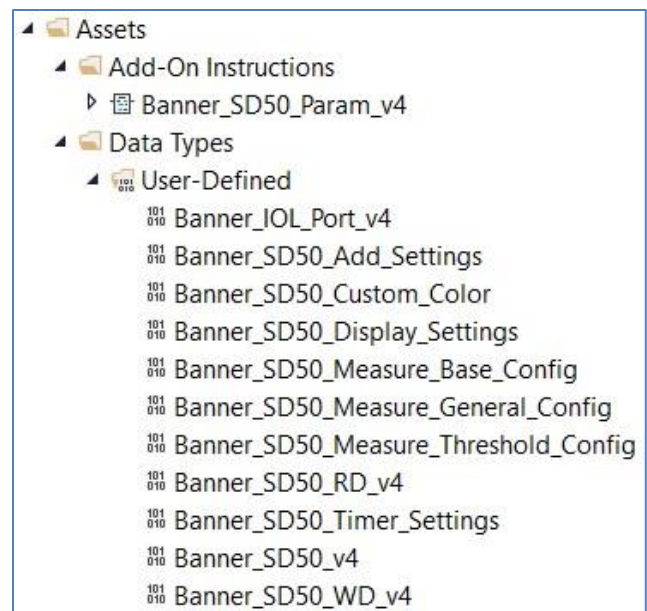
3. Navigate to the correct file location and select the AOI to be installed. In this example the "Banner_SD50_Param_v4.L5X" file will be selected. Click the Open button.



4. The Import Configuration window will pop up. The default selection will create all the necessary items for the AOI. Click the OK button to complete the import process.



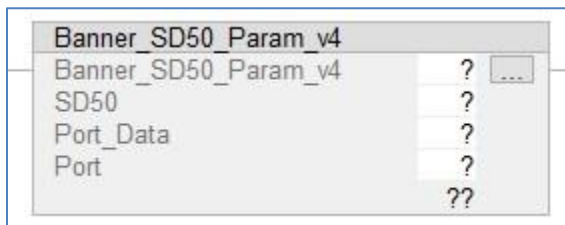
5. The AOI is added to the Controller Organizer window and should look like the picture on the right.
6. AOI installation into the Logix Designer software complete.



2. Configuring the AOI

Make sure to add and configure a Banner IO-Link Master AOI to your program before adding a Banner IO-Link Device AOI.

1. Add the “Banner_SD50_Param_v4” AOI to your ladder logic program. For each of the question marks shown in the instruction we need to create and link a new tag array. The AOI includes new types of User Defined Tag (UDT): custom arrays of tags meant specifically for this AOI.



2. In the AOI, right-click on the question mark on the line labeled “Banner_SD50_Param_v4”. Click New Tag. In this example, we’ll use the name “SD50_IOLM1_01_Status”. The example naming convention accounts for this being a SD50 Pro device connected to IO-Link Master #1, port #1, in our program. More masters could be named IOLM2, IOLM3, and different sensors could be connected at other port numbers, etc.

The “EnableIn” and “EnableOut” variables are ladder logic rung status bits automatically added to all AOIs.

3. Now click on the question mark on the line labeled “SD50”. Click New Tag. In this example, we’ll use the name “SD50_IOLM1_01”. This array of tags includes the port number to which the SD50 Pro is connected and the Read and Write data blocks, made up of the information from the SD50 Pro IO-Link Index and Subindex values.

New Tag

Name: SD50_IOLM1_01

Description:

Usage: <controller>

Type: Base Connection...

Alias For:

Data Type: Banner_SD50_v4

Parameter Connection:

Scope: Test

External Access: Read/Write

Style:

☐ Constant

☐ Sequencing

☐ Open Configuration

☐ Open Parameter Connections

Create

Cancel

Help

3. Linking the Device AOI to the Master AOI

The third tag in the SD50 Pro AOI is meant to be tied into the IO-Link Master AOI.

1. For the “Port_Data” line, choose the relevant IO-Link Master AOI’s “Port_Data” variable. In this example, we choose “IOLM1.Port_Data”.

Banner_SD50_Param_v4
Banner_SD50_Param_v4 SD50_IOLM1_01_Status ...
SD50 SD50_IOLM1_01
Port_Data IOLM1.Port_Data
Port

Enter Name Filter... Show: All Tags

Name	Data Type
IOLM1	Banner_IOLM_v4
IOLM1.Message_Source_Data	SINT[190]
IOLM1.Message_Destination_Data	SINT[190]
IOLM1.Error_Log	Banner_IOLM_EL_v4[10]
IOLM1.Error_Write_Retry	BOOL
IOLM1.Num_Error_MSGS	DINT
IOLM1.IO_Link_Master_Busy	BOOL
IOLM1.AOI_Reset	BOOL
IOLM1.Port_Data	Banner_IOL_Port_v4
IOLM1.Halt_Operation	BOOL
IOLM1.AOI_Halted	BOOL

2. For the last line of the SD50 Pro AOI, “Port”, type in a number equal to the IO-Link Master port number to which the SD50 is connected. In this example, the device is on port 1.

IOLM1.Port_Data.Port_Activate.1

Banner_SD50_Param_v4
Banner_SD50_Param_v4 SD50_IOLM1_01_Status ...
SD50 SD50_IOLM1_01
Port_Data IOLM1.Port_Data
Port 1

3. The final step is to place an examine on in front of the AOI. This is linked to the Port_Activate for the port the device is plugged into. In this example that is IOLM1.Port_Data.Port_Activate.

4. Using the Paired IO-Link Master and Device Parameter Data AOIs

The goal is to make the Banner device's IO-Link Index and Subindex values appear in PLC tag arrays as if it were an EtherNet/IP-speaking device. Reading from and writing to the Banner IO-Link device becomes as easy as changing tag values in the PLC. All the complicated work of translating from EtherNet/IP to IO-Link is handled automatically, behind the scenes.

When the program is downloaded to the PLC and the PLC goes into run mode, the IO-Link Master AOI performs a global read for each connected Banner device AOI.

There are two methods for acyclic reading of Banner device Index and Subindex values.

1. The initial global read, as requested by the IO-Link Master AOI after the PLC program is downloaded and run.
2. Manually via the "Command" variable found in every Device Parameter Data AOI. The "Command" register can be used to force one-time read or write actions, as described in Appendix A of any Banner Device Parameter AOI guide.

Acyclic writes are done by updating the values that need to be adjusted. Then enter the necessary value into the "Command" register to trigger a IO-Link Index write. Each ISDU Index has a specific value that activates it. The "Command" values are described in Appendix A.

Appendix A Command Register

The “Command” register can be used to control the connected IO-Link device ‘by hand’. Placing the correct command numbers into this register is how the AOI achieves its automatic control. The write commands are most useful when an IO-Link device has been physically replaced with a new device of the same type—in this situation executing the “41” command will restore all the PLC saved settings to the new unit.

SD50_IOLM1_01	{...}
SD50_IOLM1_01.Initial_Global_Read	0
SD50_IOLM1_01.Command	0
SD50_IOLM1_01.Read	{...}
SD50_IOLM1_01.Write	{...}
SD50_IOLM1_01.Reset	0

The table below shows the command numbers associated with the reading and writing of specific pieces of data. See the SD50 Pro IODD file or the IO-Link Data Reference Guide for more information of the parameters.

Table 1: AOI Command Numbers

SD50 Pro Parameter (IO-Link Index #)	Read Command	Write Command
Global Read (all)	1	
Global Write (all)		41
Direct Parameters (0)	2	
System Command (2)		42
Device Access Locks (12)	3	43
Serial Number (21)	4	
Operating Mode (64)	5	44
Additional Settings (80)	6	45
Display Settings (82)	7	46
Timer Settings (83)	8	47
Measure General Config (84)	9	48
Measure Base Config (85)	10	49
Measure Threshold 1 Config (86)	11	50
Measure Threshold 2 Config (87)	12	51
Measure Threshold 3 Config (88)	13	52
Measure Threshold 4 Config (89)	14	53
Custom Color 1 (90)	15	54
Custom Color 2 (91)	16	55
Message 1 (92.1)	17	56
Message 2 (92.2)	18	57
Message 3 (92.3)	19	58
Message 4 (92.4)	20	59
Message 5 (92.5)	21	60
Message 6 (92.6)	22	61
Message 7 (93.1)	23	62

Message 8 (93.2)	24	63
Message 9 (93.3)	25	64
Message 10 (93.4)	26	65
Message 11 (93.5)	27	66
Message 12 (93.6)	28	67
Message 13 (93.7)	29	68

Appendix B AOI Resets

From time to time, a reset may be needed for an AOI, particularly if one of the read/write processes the AOI undertakes is interrupted. To this end, each Device Parameter Data AOI and IO-Link Master AOI has a reset bit.

Toggling this bit to a “1” causes the AOI to start over and try again.

▲ SD50_IOLM1_01	{...}
SD50_IOLM1_01.Initial_Global_Read	0
▶ SD50_IOLM1_01.Command	0
▶ SD50_IOLM1_01.Read	{...}
▶ SD50_IOLM1_01.Write	{...}
SD50_IOLM1_01.Reset	0

Best practices suggest adding a rung to your ladder logic program that resets all IO-Link Master and Device Parameter AOIs on the first scan. The example below shows one IO-Link Master, called IOLM1, and one connected SD50 having their respective AOIs being reset in this way.

