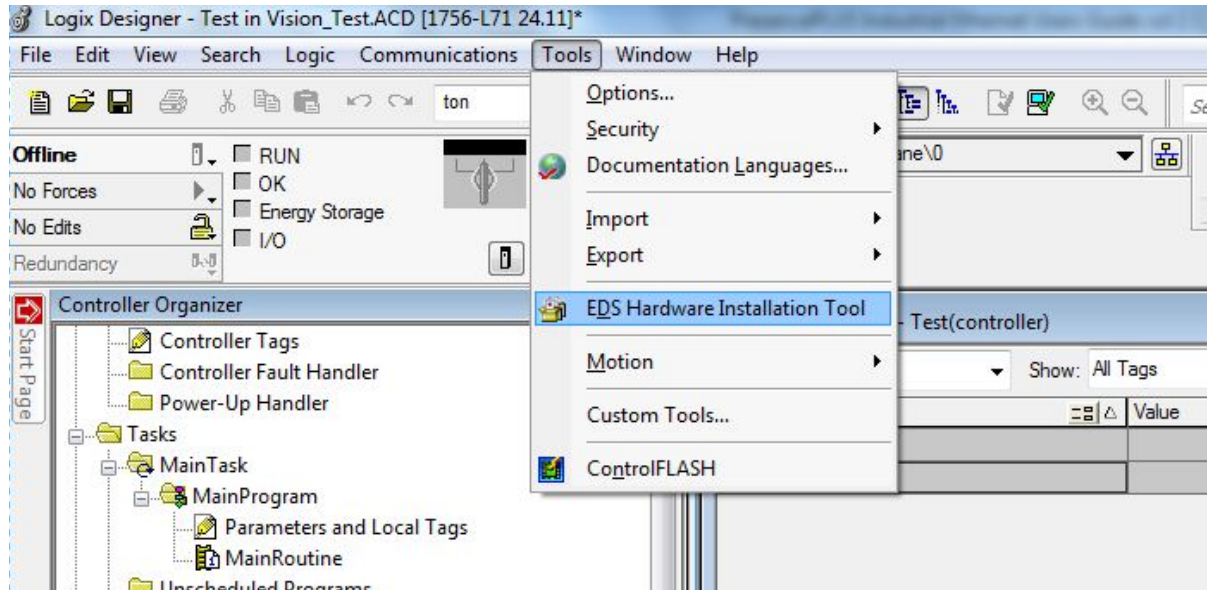


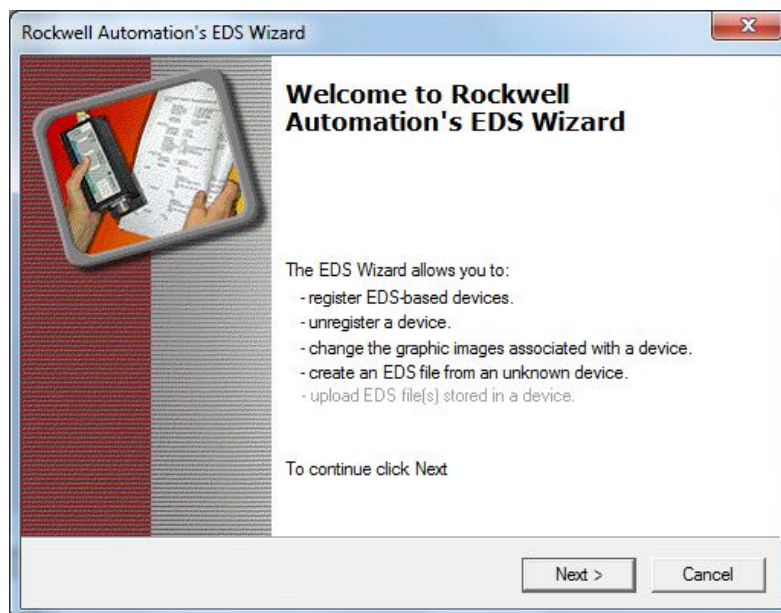
### GatewayPro ControlLogix EtherNet/IP Configuration Using EDS File

Here is an example of using the GatewayPro EDS file to create a connection on a ControlLogix PLC.

1. First we use the EDS Hardware Installation Tool to register the EDS file.



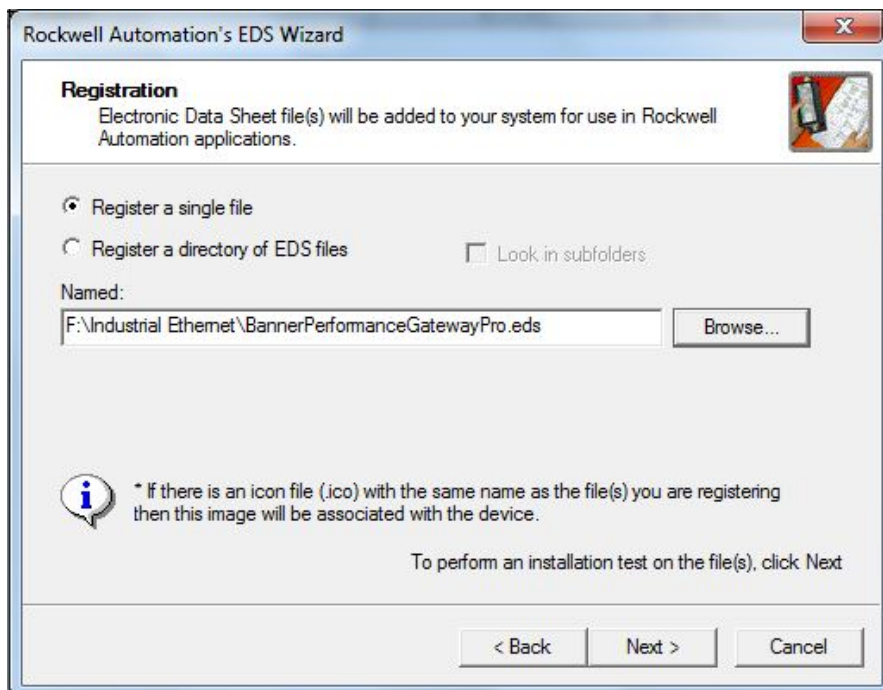
2. Click Next



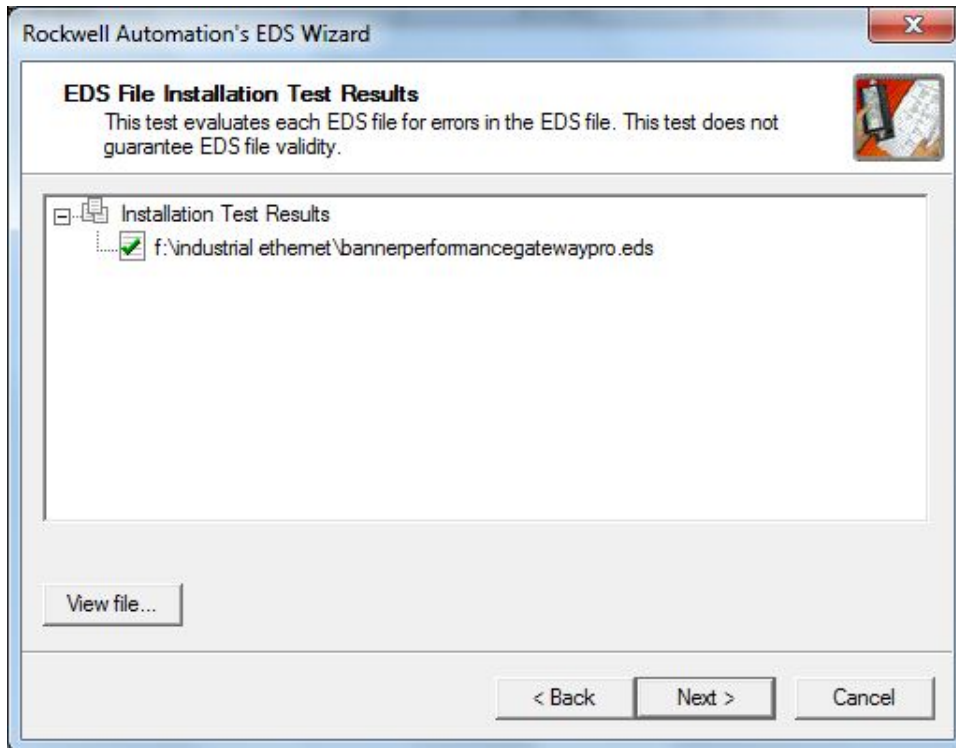
## 3. Choose the "Register and EDS file(s)" option



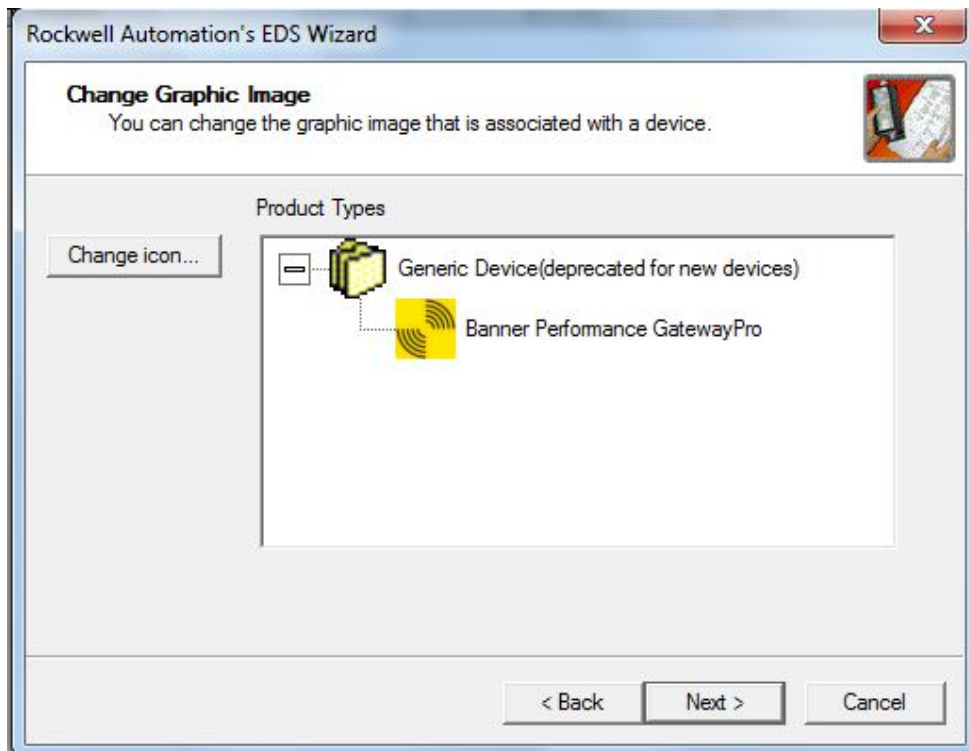
## 4. Browse to find the EDS file, then click Next.



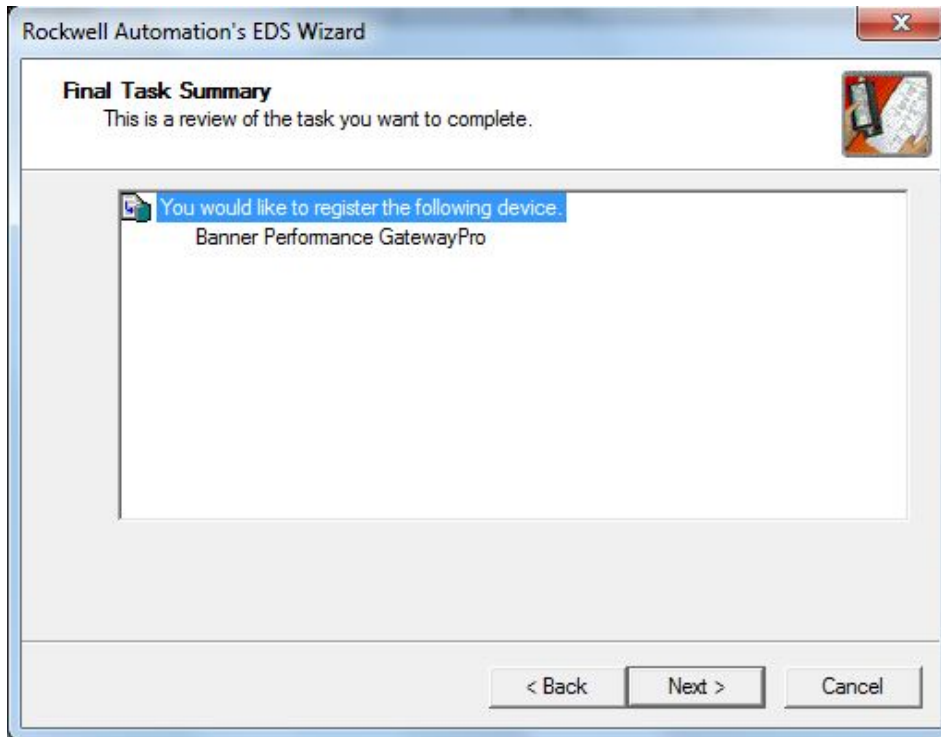
5. The file has been tested and can be registered. Click Next.



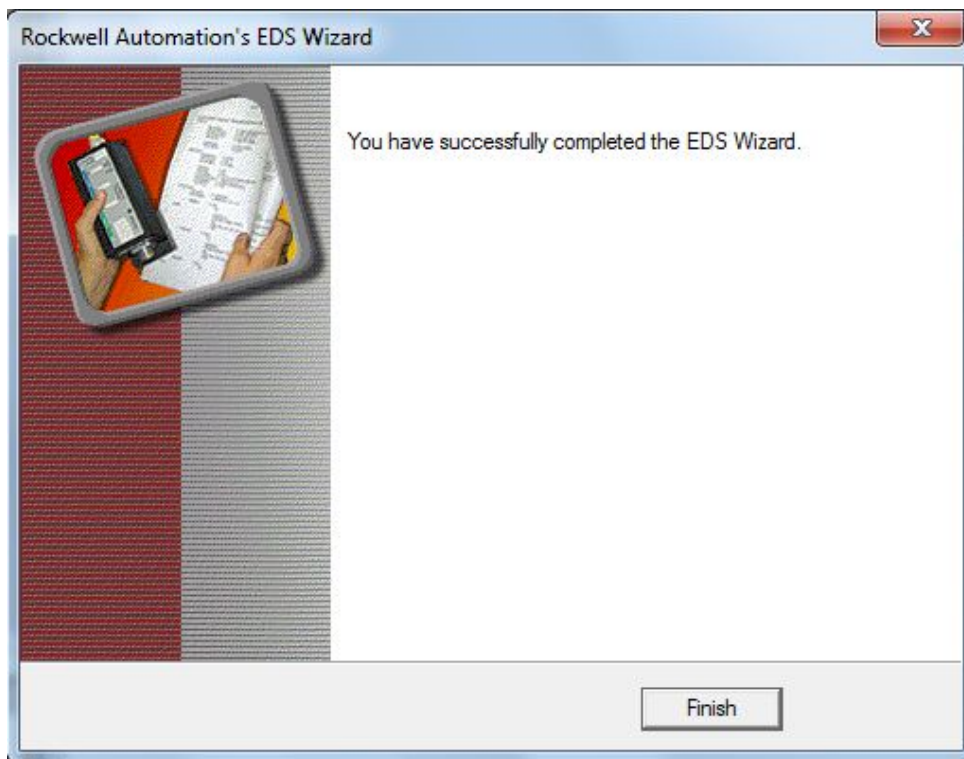
6. Here is the icon associated with the EDS file. Click Next.



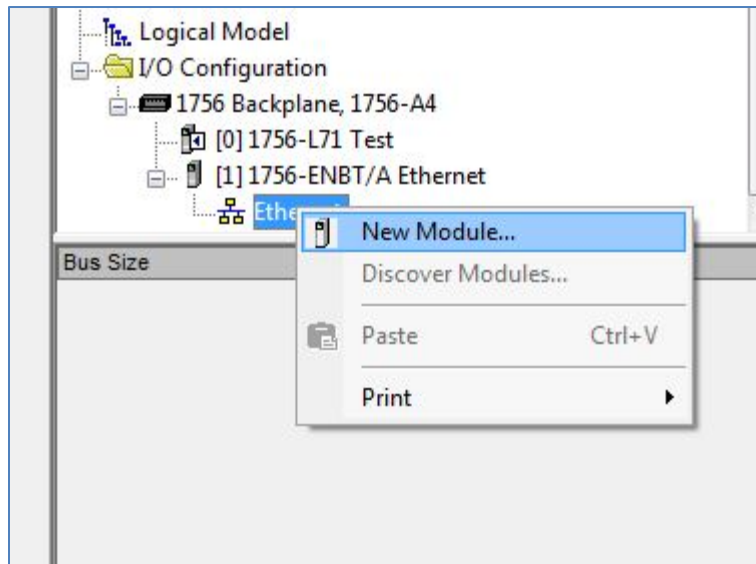
7. Everything looks good. Click Next to register this EDS file.



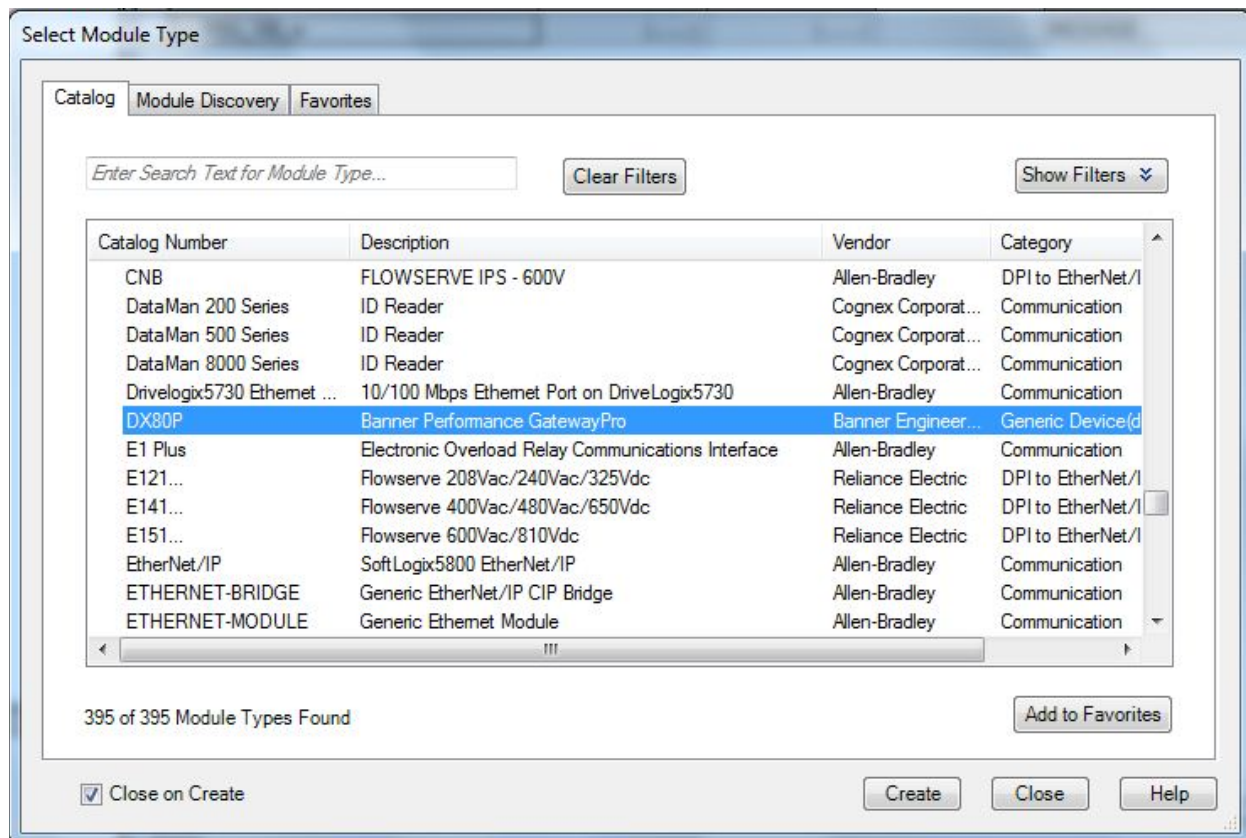
8. Complete! Click Finish. The EDS file is now registered in the Rockwell software.



9. Now we will make a new module using the EDS file. Right click on the PLC's Ethernet adapter and choose "New Module".



10. From the list, locate "DX80P" then click Create.



11. Fill in a name, optional description, and IP address for the GatewayPro. Then click the “Change” button in the Module Definition box.

**New Module**

General\* | Connection | Module Info | Internet Protocol | Port Configuration

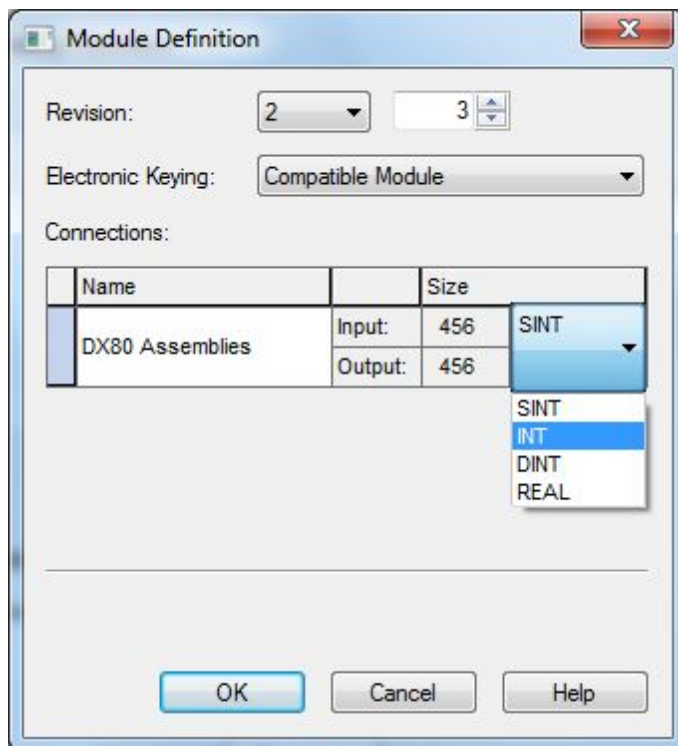
Type: DX80P Banner Performance GatewayPro  
Vendor: Banner Engineering Corporation  
Parent: Ethernet  
Name: GatewayPro  
Description:

Ethernet Address  
☐ Private Network: 192.168.1.  
☒ IP Address: 192 . 168 . 0 . 1  
☐ Host Name:

Module Definition  
Revision: 2.3  
Electronic Keying: Compatible Module  
Connections: DX80 Assemblies  
Change ...

Status: Creating OK Cancel Help

12. Make sure to select "INT" as the data type.



13. Click OK, then OK again and download the program to the PLC. The connection will look like that seen below.

