

Quick Start Guide

Installing the BWA-BK-023 and BWA-BK-022 Bracket Assemblies

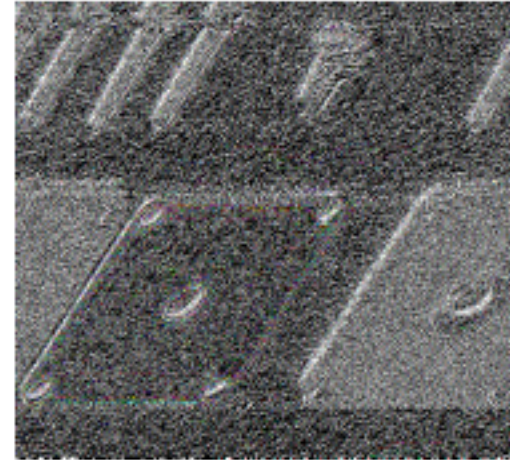
Required equipment, which is included in the BWA-BK-023 and BWA-BK-022 bracket assemblies:

- One SMBQM30 bracket
- One Phillips 1/4-28 x 1/2 flathead screw
- Four M2.5 socket head cap screws
- One thermal tape (BWA-BK-022 only)

The following items are recommended, but not included in the bracket or sensor kits:

- Loctite 410 (blue)
- Cleaning wipes
- 2 mm hex Allen wrench
- Phillips screwdriver

Figure 1. Bracket kit parts



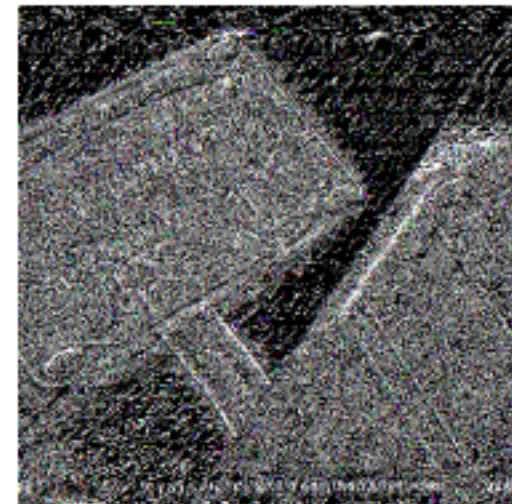
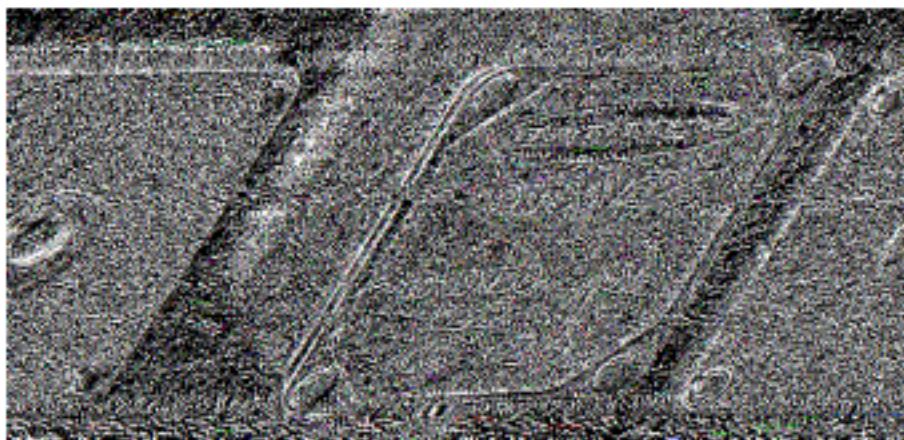
Install the BWA-BK-023 or BWA-BK-022 Bracket Using Thermal Tape

This example uses a **QM30VT2** with **BWA-BK-022**. The same steps can be applied for a **QM30VT1** with **BWA-BK-022** or a **QM30VT2-SS-9M** with **BWA-BK-023**. The provided thermal tape or desired epoxy could be used by following these steps.

1. Clean the bracket and sensor.
2. Place the sensor on top of the bracket so the countersunk hole is covered by the sensor and the four corner holes align.

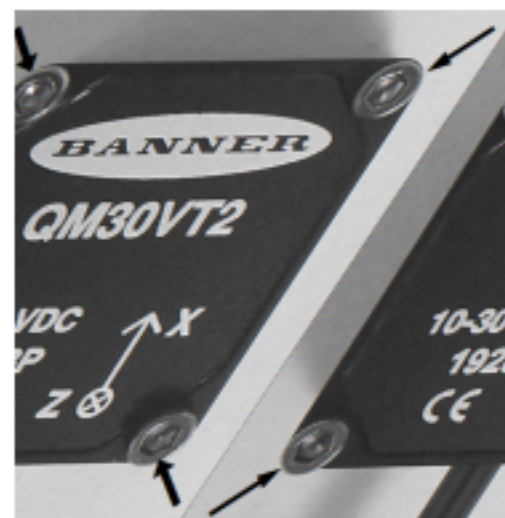
Figure 3. QM30VT2 mounted on the BWA-BK-022 bracket

Figure 2. BWA-BK-022 and QM30VT2 sensor



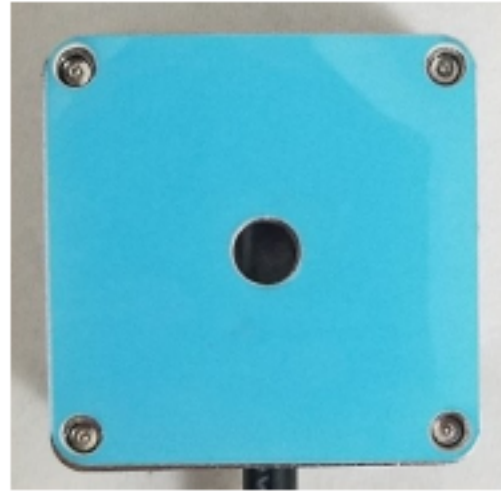
3. Screw the sensor to the bracket with the provided screws using a 2 mm Hex Allen wrench. The maximum torque for socket head screws is 0.5 N·m. Do not over tighten.

Figure 4. QM30VT2 screwed onto the BWA-BK-022 bracket



4. Apply the thermal tape to the bracket.
 - a) Turn sensor with bracket side faced up.
 - b) Peel the clear liner off the thermal tape.
 - c) Align and stick the thermal tape to the bracket with blue liner facing up.

Figure 5. BWA-BK-022 with the blue thermal tape liner facing up



5. Peel off the blue side of the tape.
6. Stick the bracket and sensor assembly to equipment.
7. Apply pressure for 30 seconds to improve adhesion.

Install the BWA-BK-023 and BWA-BK-022 Using a Flathead Screw

This example uses a QM30VT2 with BWA-BK-022 for demonstration. The same steps can be applied for a QM30VT1 with BWA-BK-022 or a QM30VT2-SS-9M with BWA-BK-023.

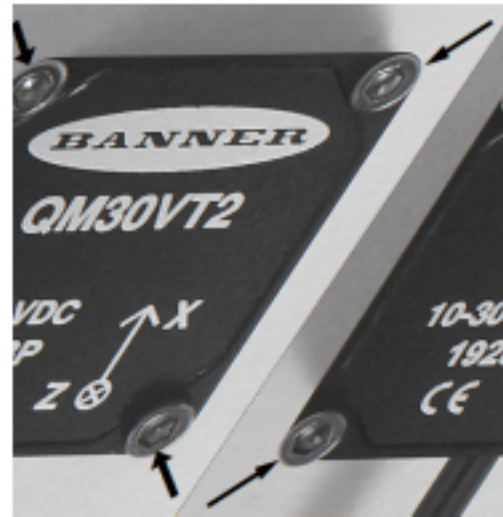
1. Clean bracket and sensor.
2. Tap a M4 × 0.7 hole into the surface of the equipment you want to monitor.
3. Put the flathead screw into the countersunk hole of the bracket.

Figure 6. BWA-BK-022 with the flathead screw installed



4. Coat the threads in the mounting surface with the 410 series Loctite.
5. Screw the bracket into your drilled hole until the bracket is snug.
The maximum torque for the flathead screws is 1 N·m. Do not over tighten.
6. Place the sensor on top of the bracket so the four corner holes align. Secure sensor to bracket with the provided screws using a 2 mm Hex Allen wrench.
The maximum torque for socket head screws is 0.5 N·m. Do not over tighten.

Figure 7. QM30VT2 mounted to the BWA-BK-022 bracket



Install a QM30VT Using the BWA-BK-013 or BWA-BK-019 Magnetic Round Mount Bracket

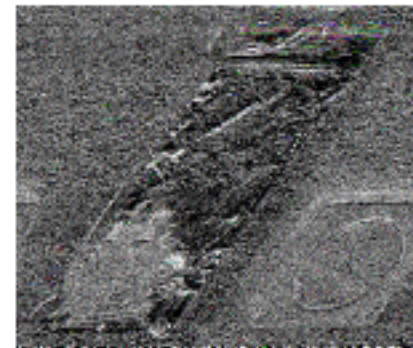
The required hardware, which is included in both bracket kits is:

- One bracket
- For BWA-BK-013: Four M2.5 x 14 mm and four M2.5 x 16 mm socket head cap screws
- For BWA-BK-019: Four M2.5 x 16 mm socket head cap screws

The following items are recommended, but not included in the bracket or sensor kits:

- Cleaning wipes
- 2 mm hex Allen wrench

Figure 8. BWA-BK-013 with fasteners



This example uses a QM30VT2, but these steps can also be used on other QM30VT models. Brackets BWA-BK-013 and BWA-BK-019 are not included with the QM30VT sensor and must be purchased separately.

1. Clean the bracket and sensor.
2. Turn the bracket so the magnet is facing down.

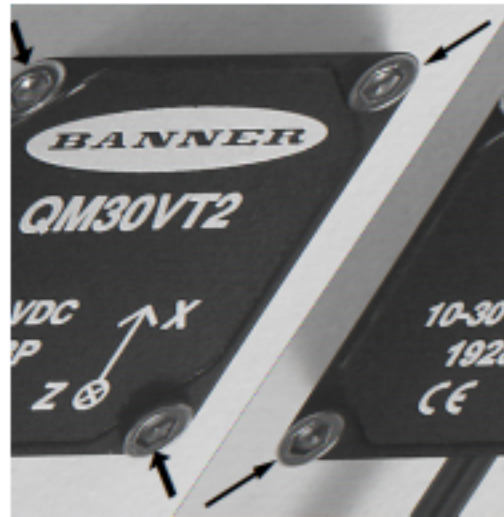
Figure 9. BWA-BK-013 with magnet facing down



3. Place the sensor on top of bracket, aligning the four corner holes.
4. Secure the sensor to the bracket using the screws for the model being installed.

The maximum torque for flathead screws is 0.5 N·m. Do not over tighten.

Figure 10. QM30VTZ mounted to the BWA-BK-013 bracket



5. Place the sensor on the equipment to be monitored.