

Quick Start Guide

Logging into the Web Service

The web server captures data from the DXM using either a cellular connection or an Ethernet connection. Users collect and view the data or update and manage the DXM using a web browser.

A customer service representative will have created a company login and password and emailed it to you when you purchased your subscription service.

Use both the website and the DXM configuration software to set up and configure your data collection. Use Internet Explorer or Google Chrome as your Internet browser and enter the URL: <https://bannercds.com>. The login page appears.

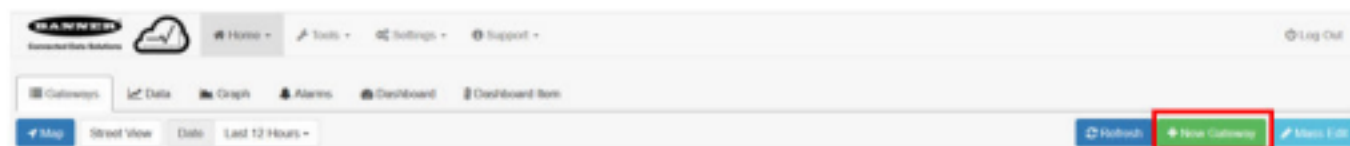


Create a New Gateway

After you log into the Banner Cloud Data Services website, follow these steps.

1. Click on +New Gateway.

Create a new Gateway/site for each device that will be sending data to the web server.



2. Enter a site name.
3. Under the Options column, click +.
Detailed information about your new site displays.
4. Copy the Site ID number shown on the dashboard.

The Site ID number created by the web server is a required parameter in the configuration setup of the DXM. The Site ID is the address the webserver uses to store the data pushed from the DXM.

5. Click Save.

Modifying the XML Configuration File

Use the DXM configuration software to configure the operation of the DXM.

Launch the DXM configuration software. You can use one of these three screens to modify registers:

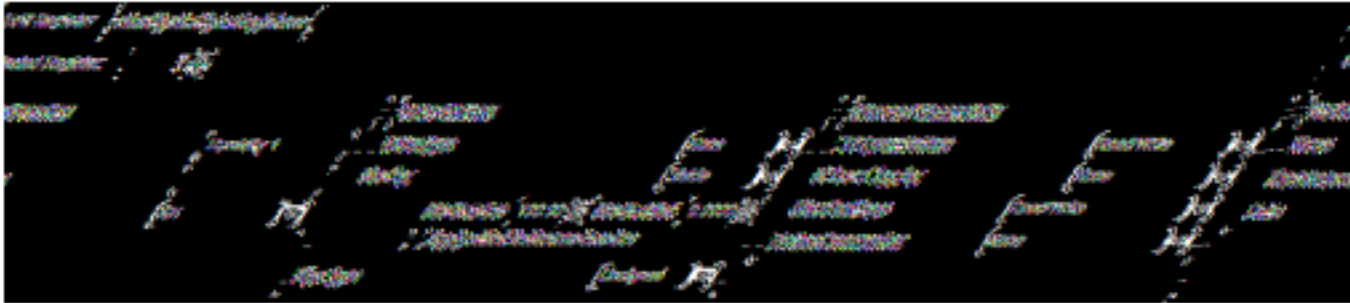


- Local Registers— Edits individual registers
- Modify Multiple Registers— Edits multiple registers at the same time
- Local Registers in Use— Edits individual registers

Refer to the [DXM Configuration Software Instruction Manual](#) for more details.

Edit Registers Using the Local Registers in Use Screen

Use this screen to modify the parameters of any local registers being used.



1. Go to the Local Registers > Local Registers in Use > Edit Register section of the bottom of the screen. A list of the local registers being used displays.
2. Under the Selected Register box, select the register to delete or modify. You may select the register by using the up/down arrows, directly entering a register number into the edit field, or clicking within the corresponding row in the Local Registers in Use table.
Only Local Registers that have already been changed from their default configuration are displayed in the Local Registers In Use table.
3. Using the drop-down lists, assign a name, register group, change the units, or make other configuration changes to this register.
4. To push register values to the web server, set Cloud Permissions to read.
If Cloud Permissions are set to Read, the web server only views data from the device and cannot write data to the device. If the permissions are set to Write, the web server only writes to the device and cannot read the data. If the permissions are set to Read/Write, the web server can read the data from the device and write to the device from the web.

The changes are automatically applied within the software, not the XML file. To change another register, use the up or down arrows to select another register number. To save these changes to the XML file, go to File > Save.

Modify Multiple Registers

Modify a range of registers from the Local Registers > Local Registers in Use > Modify Multiple Registers screen.

Select which parameter edits to modify. Most parameters have three selections.

- Unchanged— no changes
- Default— change to default settings
- Set— modify parameter. Other selections will appear based on the parameter.



1. Enter the Starting register and Ending register.
2. Select the value to change using the drop-down list next to each value.
3. Enter the new value in the edit field provided.
4. To push register values to the web server, set Cloud Permissions to read.
If the Cloud Permissions are set to Read, the web server only views data from the device and cannot write data to the device. If the permissions are set to Write, the web server only writes to the device and cannot read the data. If the permissions are set to Read/Write, the web server can read the data from the device and write to the device from the web.
5. Click Modify Registers to save and apply the changes.

Configure the Cloud Settings

1. To configure the connection to the web server, go to the Settings > Cloud Services screen.



2. Copy and paste the Site ID.

The Site ID is that long string of numbers and letters from the Banner Cloud Data Services website.

3. Verify the Server Name/IP is set to **push.bannercds.com** and the Page is set to **/push.aspx** for sending to the website. To push to the demo website, set the Server Name/IP to **demopush.sensonix.net**.
4. Set the Cloud Push Interval to a value appropriate for your application.

The Cloud Push Interval determines how often the device pushes the data to the web. The faster the push interval, the more data is sent to the site. Cellular plans can only push at an interval of 5 minutes or longer, while Ethernet connections can push at an interval of 1 minute or longer. The Sample Count specifies how many times the data is gathered within the Cloud Push Interval.

For example, if the Cloud Push Interval is 15 minutes and the Sample Count is set to 3, then during each data push (every 15 minutes), 3 samples are sent to the web. This is one sample every 5 minutes.

5. Save the configuration by going to File > Save.

File names must be no more than 30 characters long, and should not contain any spaces or special characters.

6. With a USB cable connected to the device, go to the Device > Connection Settings menu.
7. Select the appropriate Comm Port and click Connect.



- If multiple comm ports are visible, try each one until the software is able to connect to the device.
- Go to Device > Send configuration to the Device to upload the new XML file.

Upload the XML configuration File to the Website

To upload an XML configuration file to the website, follow these instructions.

- At the webserver, select the Home screen.

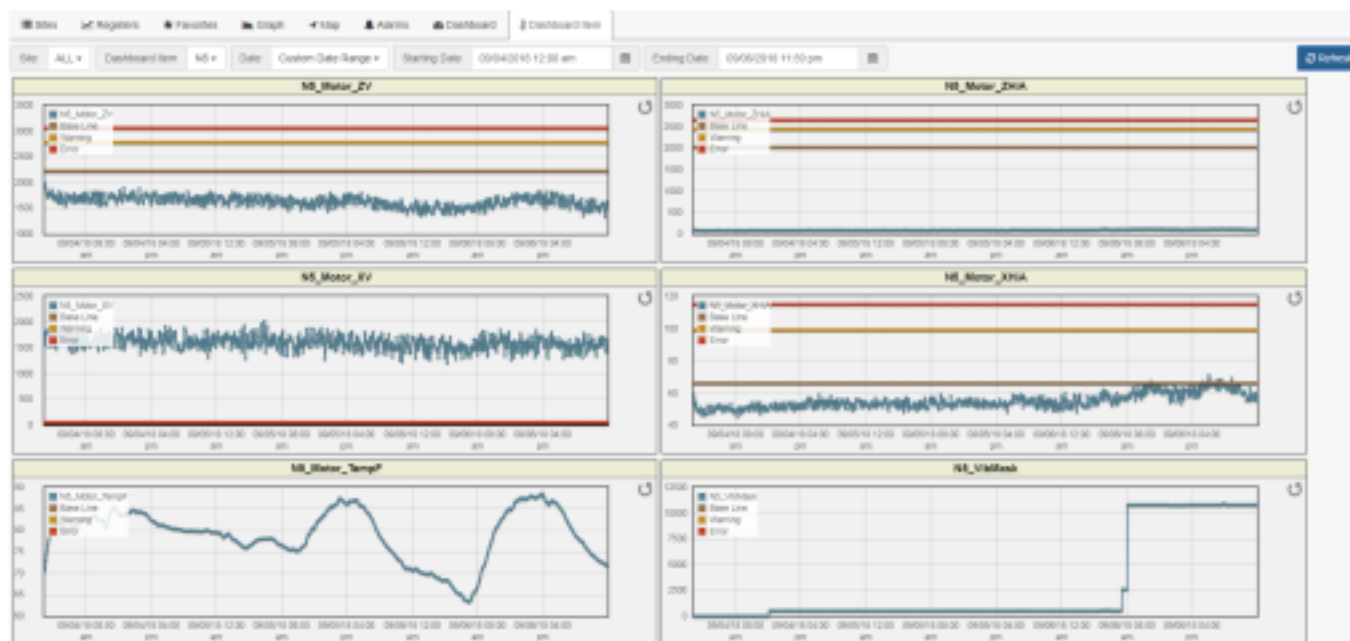


- On the row displaying your new site, click the Edit Gateway (pencil) icon.
- Select Update XML.
- Click Choose File and select the file that was just updated to the DXM and click Save.

After the XML file is loaded into the webserver, the webserver uses the register names and configurations defined in the configuration file.

- Click on the Site Name link to go to the configured registers to see the values uploaded by the DXM. The same XML configuration file is now loaded on both the DXM and the Website. After some time, the data should be seen on the website.

Completing these steps creates continuity between the site created on the website with the DXM used in the field. The DXM pushes data to the website, which can be viewed at any time.



Web Services Features

For more information on each of these features, see the [Banner Cloud Data Services \(CDS\) Instruction Manual](#).

Compare Graphs of Multiple Registers—Compare two or more register values on the same time graph.

Create FTP Backups or Download Data for Backup—Back up registers, upload logs, alarms, updates, and audits to an FTP address that can be accessed with a username and password created by the user.

Create New Companies and Users— This feature is only available with certain subscriptions. Limits may be placed on the number of companies or users a subscription can have.

Create Spreadsheet Tables— Create data tables to view numbers in a spreadsheet-style format.

Set Alarms— Set alarms when a register reaches or is compared to a certain numerical value. Alarms can also be used for connectivity problems, MAC alerts, geofence alerts, or register limits. If an alarm is activated, emails can be sent automatically to preset addresses.

Updating Script or XML via Web— Download an XML file from the DXM or upload a new XML to the DXM without having the device connected to a computer via USB.

Use Log Viewer for Viewing Past Data— Display graphs of data logged to the SD card, backed up previously to an FTP site, or downloaded.

View Graph of Individual Registers— View a graph of register values over time.

Write to Registers via Website— Set Cloud Permissions to Write or Read/Write in the DXM configuration to write to the DXM from the website. Instead of using the LCD on the DXM or waiting for an input value, users can write certain register values directly to the DXM from the cloud site.

Banner Engineering Corp. Software Copyright Notice

This software is protected by copyright, trade secret, and other intellectual property laws. You are only granted the right to use the software and only for the purposes described by Banner. Banner reserves all other rights in this software. For so long as you have obtained an authorized copy of this software directly from Banner, Banner grants you a limited, nonexclusive, nontransferable right and license to use this software.

You agree not to use, nor permit any third party to use, this software or content in a manner that violates any applicable law, regulation or terms of use under this Agreement. You agree that you will not reproduce, modify, copy, deconstruct, sell, trade or resell this software or make it available to any cloud storage or application hosting service.

Disclaimer of Warranties. Your use of this software is entirely at your own risk, except as described in this agreement. This software is provided "AS-IS." To the maximum extent permitted by applicable law, Banner, its users and its channel partners disclaim all warranties, expressed or implied, including any warranty that the software is fit for a particular purpose, title, merchantability, data loss, non-interference with or non-infringement of any intellectual property rights, or the accuracy, reliability, quality or content in or linked to the services. Banner and its users and channel partners do not warrant that the services are secure, free from bugs, viruses, interruption, errors, theft or destruction. If the exclusions for implied warranties do not apply to you, any implied warranties are limited to 90 days from the date of your use of this software.

Limitation of Liability and Indemnity. Banner, its users and channel partners are not liable for indirect, special, incidental, punitive or consequential damages, damages relating to corruption, security, loss or theft of data, viruses, spyware, loss of business, revenue, profits, or investment, or use of software or hardware that does not meet Banner minimum systems requirements. The above limitations apply even if Banner and its users and channel partners have been advised of the possibility of such damages. This Agreement sets forth the entire liability of Banner, its users and your exclusive remedy with respect to the software use. You agree to indemnify and hold Banner and its users and channel partners harmless from any and all claims, liability and expenses, including reasonable attorney's fees and costs, arising out of your use of the Services or breach of this Agreement (collectively referred to as "Claims"). Banner reserves the right at its sole discretion and at its own expense, to assume the exclusive defense and control of any Claims. You agree to reasonably cooperate as requested by Banner in defense of any Claims.