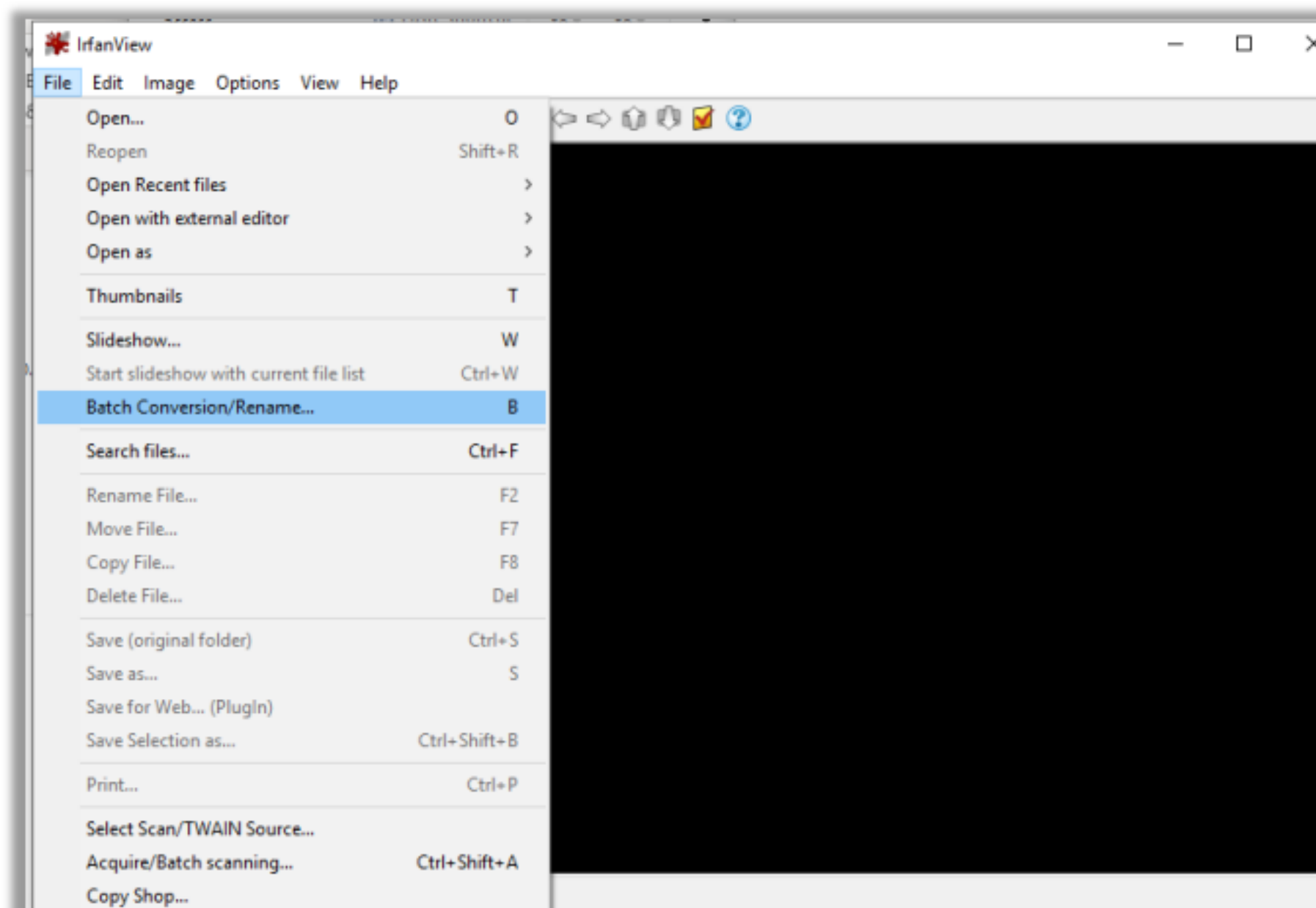


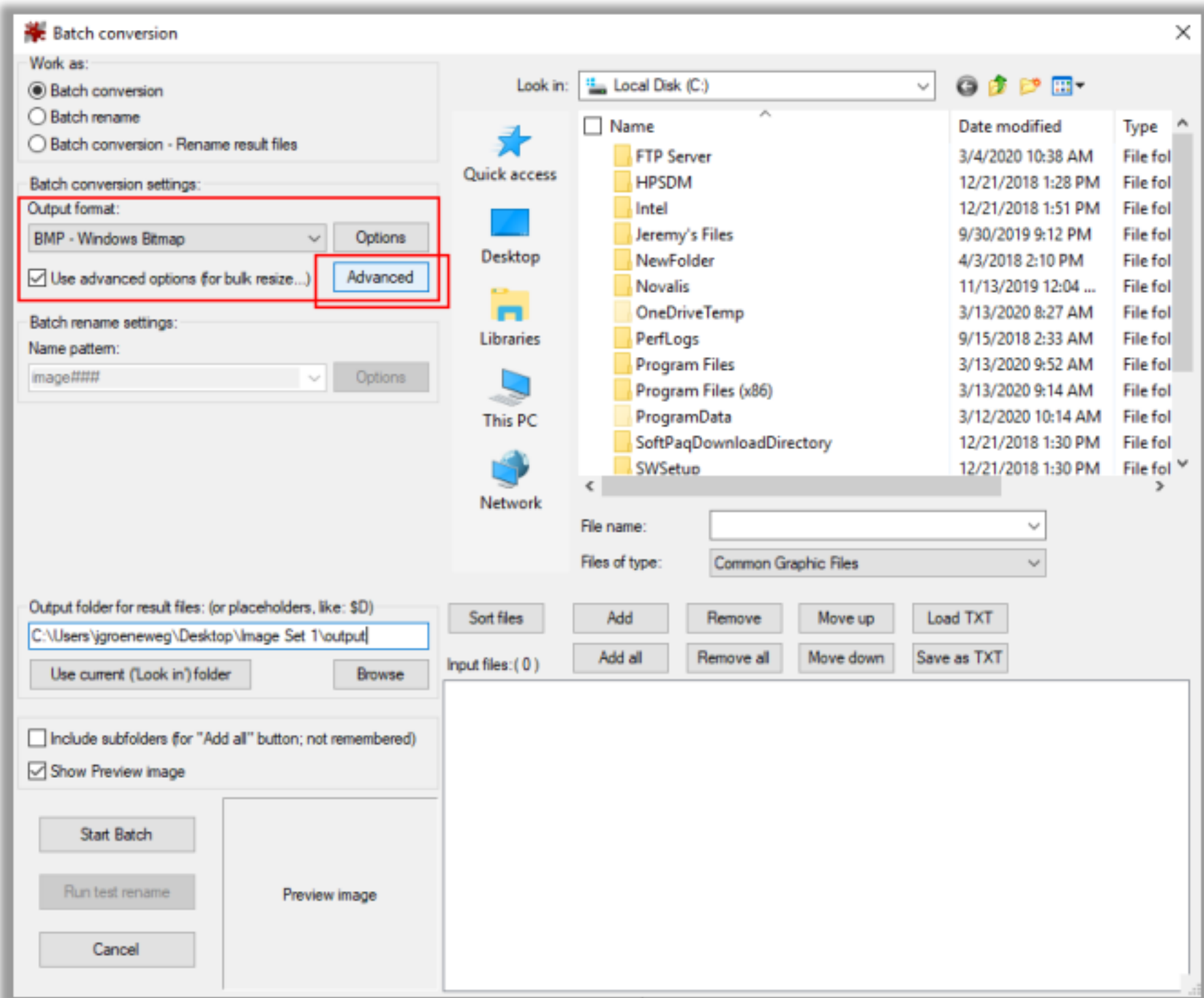
Watermarking Images With Their Filenames

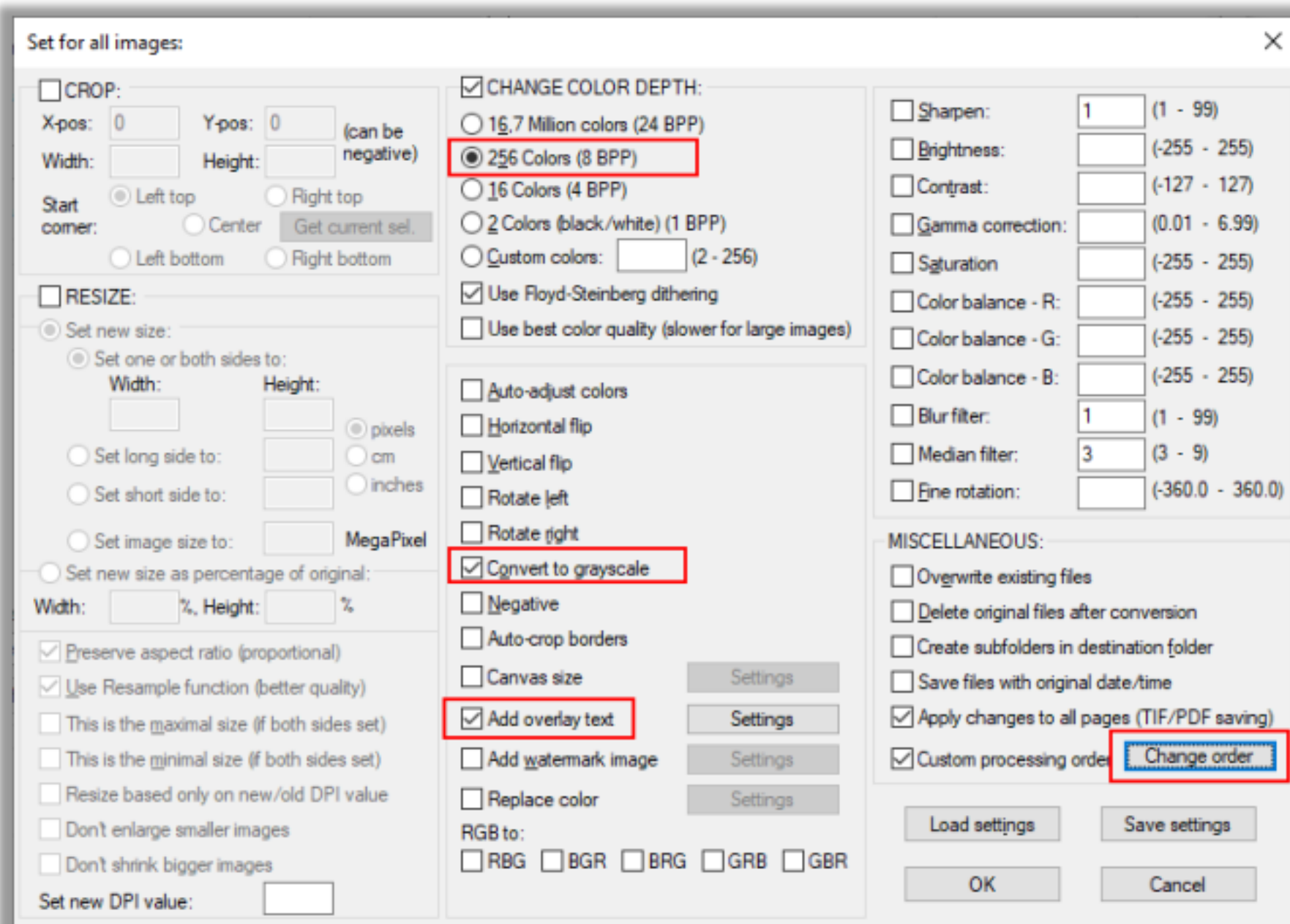
Sometimes it is helpful to be able to see what image you are looking at while using the emulator function of Vision Manager. A free third-party image editor program called IrfanView can make this possible by adding the filename as a watermark to any corner of a batch of images. IrfanView is available from www.irfanview.com.

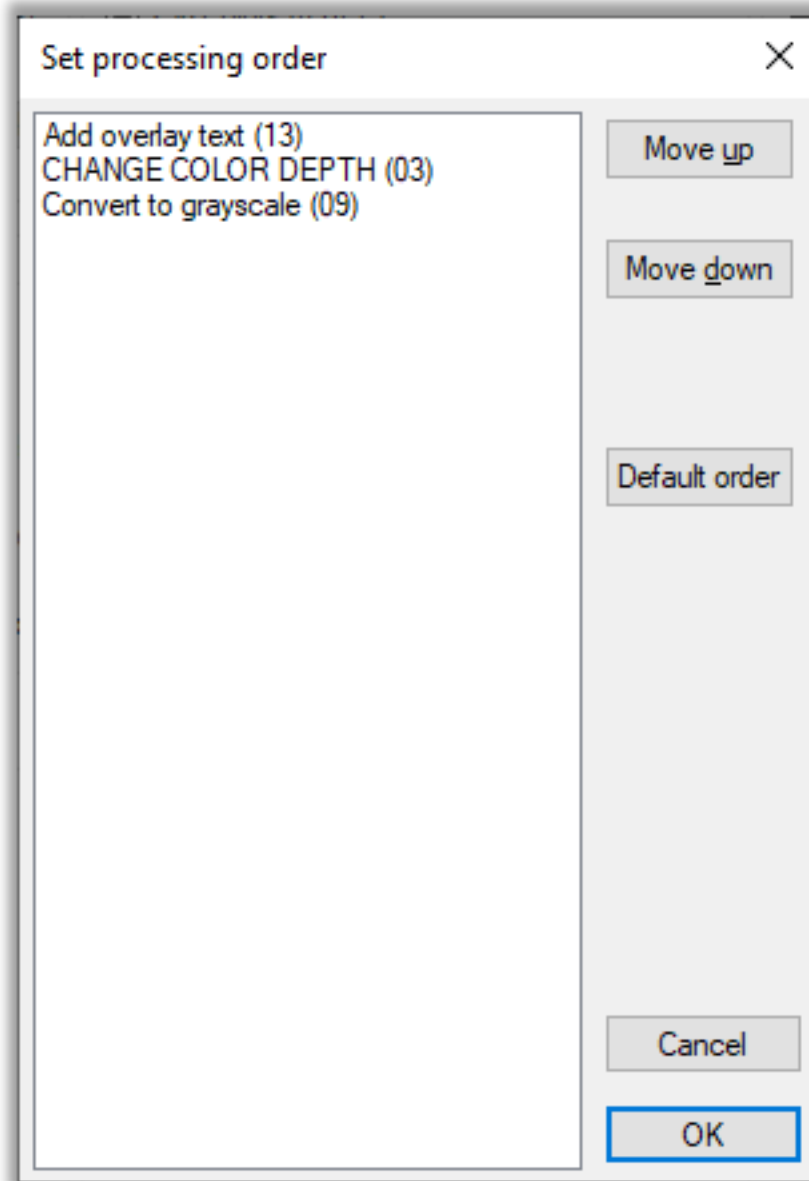
Perform a Batch Conversion with IrfanView

Here are examples of using IrfanView with recommended Vision Manager compatible settings:









Set for all images: ✕

CROP:

X-pos: Y-pos: (can be negative)

Width: Height:

Start corner: Left top Right top
 Center
 Left bottom Right bottom

RESIZE:

Set new size:

Set one or both sides to:

Width: Height: pixels
 Set long side to: cm
 Set short side to: inches
 Set image size to: MegaPixel

Set new size as percentage of original:

Width: %, Height: %

Preserve aspect ratio (proportional)

Use Resample function (better quality)

This is the maximal size (if both sides set)

This is the minimal size (if both sides set)

Resize based only on new/old DPI value

Don't enlarge smaller images

Don't shrink bigger images

Set new DPI value:

CHANGE COLOR DEPTH:

16.7 Million colors (24 BPP)

256 Colors (8 BPP)

16 Colors (4 BPP)

2 Colors (black/white) (1 BPP)

Custom colors: (2 - 256)

Use Floyd-Steinberg dithering

Use best color quality (slower for large images)

Auto-adjust colors

Horizontal flip

Vertical flip

Rotate left

Rotate right

Convert to grayscale

Negative

Auto-crop borders

Canvas size

Add overlay text

Add watermark image

Replace color

RGB to:

RBG BGR BRG GRB GBR

Sharpen: (1 - 99)

Brightness: (-255 - 255)

Contrast: (-127 - 127)

Gamma correction: (0.01 - 6.99)

Saturation: (-255 - 255)

Color balance - R: (-255 - 255)

Color balance - G: (-255 - 255)

Color balance - B: (-255 - 255)

Blur filter: (1 - 99)

Median filter: (3 - 9)

Fine rotation: (-360.0 - 360.0)

MISCELLANEOUS:

Overwrite existing files

Delete original files after conversion

Create subfolders in destination folder

Save files with original date/time

Apply changes to all pages (TIF/PDF saving)

Custom processing order

Add overlay text to image

X-Coord.: Width: Start Corner: Left top Right top
(batch mode) Center
Y-Coord.: Height: Left bottom Right bottom

Text:

Append Copyright
Append Date
Append Time
Append EXIF date/time

Hint: \$D = file folder; \$F = file name ... Help

Backgr. transparency: None Semi-transp. Transparent
Text background color: Select color
 Fit background color width (selection) to text width
Text transparency: None Semi-transp. Transparent
 Antialiased text Outline 1 Shadow Outline 2 Emboss
Courier New, Size: 10 Font Color
 Adjust font size to current zoom-in size (if zoom < 100%)
Text alignment: Left Center Right

Profiles:
 Auto-load Load Delete Save

Hints for window mode:
- If selection is visible, it will be used.
- If no selection is visible, you can click into the image (main window) to set the text placement and see a preview. (CTRL + Click adds the text permanently)

Preview OK Cancel

Import the Images Into Vision Manager

Then import the images into Vision Manager and now the filename will show up in the image in Vision Manager:

