

THM Series HMI



more sensors, more solutions





Friendly | Rapid | Open | Flexible

The introduction of BANNER ENGINEERING

BANNER ENGINEERING is a global leading sensing detecting and automation solution supplier, who has more than 22,000 types of products and the most complete product lines, including industrial controllers (PLC & HMI), photoelectric sensors, measuring and detecting sensors, industrial wireless network products, machine vision, industrial safety products, industrial intelligent indicators, rotary encoders and other automation products that can meet different control & detection demands. In the past 4 decades of development, Banner has been taking innovation as the driving force of application and R&D of products. In terms of either factory automation or process automation, Banner can provide leading and reliable control & detection solutions.



The introduction of THM series HMI

THM has excellent performance, elegant outlook and complete product series. It adopts advanced embedded technology, efficient real-time operation system, and simple used operation software. Besides basic

functions of monitor, operation and storing data, it also supports major brands of controllers, PLC, inverter and other equipment communication. In various fields of Factory Automation and Process Automation, it has widely application.

THM series HMI has eight inches, which are 3.5".4.3".5.6".7".8".10.4".12.1",15".

The main stream adopts 60000 colors TFT displays, from the basic type only with the serial port, to the type integrating various serial ports, various USB interfaces, Ethernet interface, audio interface, and SD card slot of Multi function type. It has various types to realize different users under needs of different application scenes.

Friendly software

BAMS software is integrated the advantages of the major brand globally, which is easy to operate and has abundant function. The well-designed windows and the smooth animation will make you satisfied.

Rapid Response

THM adopts advanced embedded technology, low-power 32-bit RISC CPU chip, and advanced 2D graphics accelerator. High efficient built-in real-time operation system, lights when it powers on instantaneously, communicating with the controller rapidly. THM will finish its communication instantaneously and would not delay when it communicates with IPC & PLC.



Strong Communication

Integrating various serial ports (at most 3 pcs), supporting three sorts of communication styles, which are RS232/RS485/RS422, and able to communicate with controllers of different communication protocol simultaneously.

Integrated Ethernet interface: Realizing the remote monitor on HMI by Ethernet, and the data exchange between HMI and controller, each PC, and each HMI.

Integrated USB interface: Uploading and downloading program, and storing data by USB interface. Also able to connect with other equipments of USB interface, such as Mouse, keyboard and printer. Flexible expansion & wealth of function.

Cool Vision Effect

Adopting 65536 colors, True color TFT LCD screen, which is bright and colourful. It supports picture formats like BMP, JPG and GIF for individualized demonstration.

High reliability

All series of products have certification of CE, etc, which are consistent with international standards. They have advanced anti jamming performance to the environment like electromagnetic wave, static electricity, humidity, and high and low temperature. Moreover, they have various protection functions, like power reverse connection, short circuit protection, surge protection, and communication protection.

Strong | Stable | Reliable | Safe



Overview of THM hardware



Audio interface (partial models)

For playing language file, and outputting language message



Power interface

DC20 28V



Ethernet interface

Realizing the remote monitor to HMI by Ethernet, and the data exchange between HMI and controller, each PC, and each HMI.



USB interface

Uploading downloading program, and by USB interface. Also able to equipments of USB



Serial port

Supporting RS232/422/485



SD card

Able to insert SD card, for program upload & download and data storage.

Overview of BAMS software

- **BAMS software is simple to learn & use.**

- **Large volume of the gallery**

- * Supporting the format of BMP, JPG, and GIF; Supporting full color display, and meanwhile, the software integrates rich gallery for random option .
- * The software has over 4000 graphics originals for users' making images of various effect.

- **Multi languages transformation**

Supporting all fonts of Windows system;
Adopting Unicode system, and supporting multi languages online transformation, which at most reaches to 10 sorts of languages.

- **Simulation function**

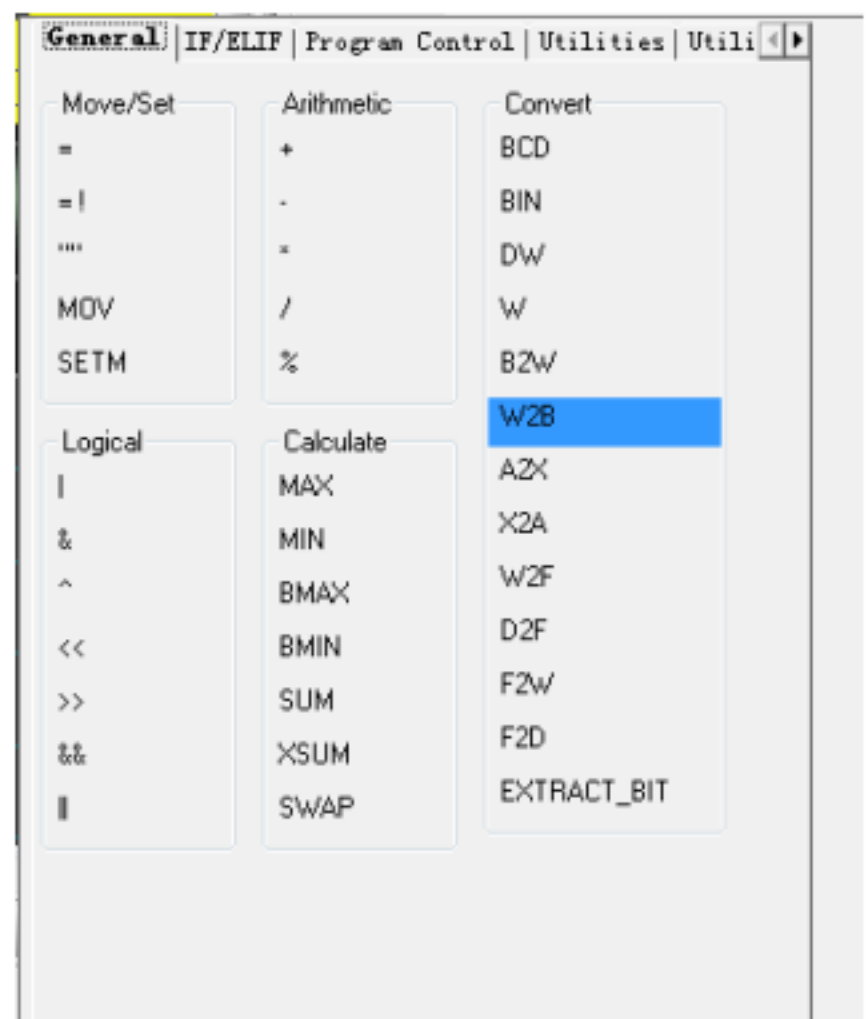
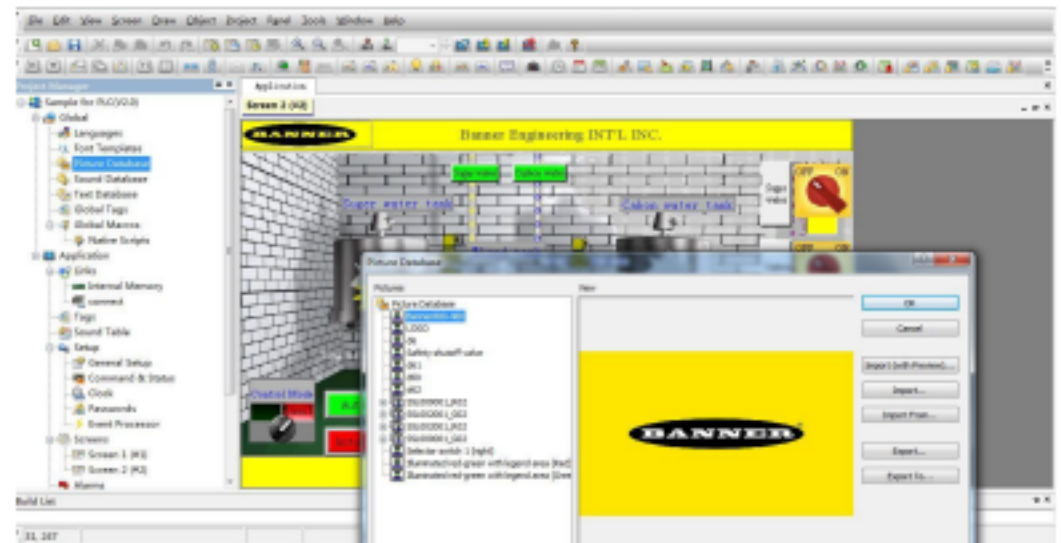
In BAMS software, simulating HMI & PLC could be operated by online or offline patterns, to simulate debugging of image and operation.

- * Offline simulation. Without HMI & PLC, directly simulating the computer as one HMI & PLC, for users' conveniently learning software and design the image.
- * Online simulation, directly regarding the computer as one HMI & PLC to communicate and exchange data. The effect is the same as online operation of HMI & PLC.

- **Strong MACRO Editor**

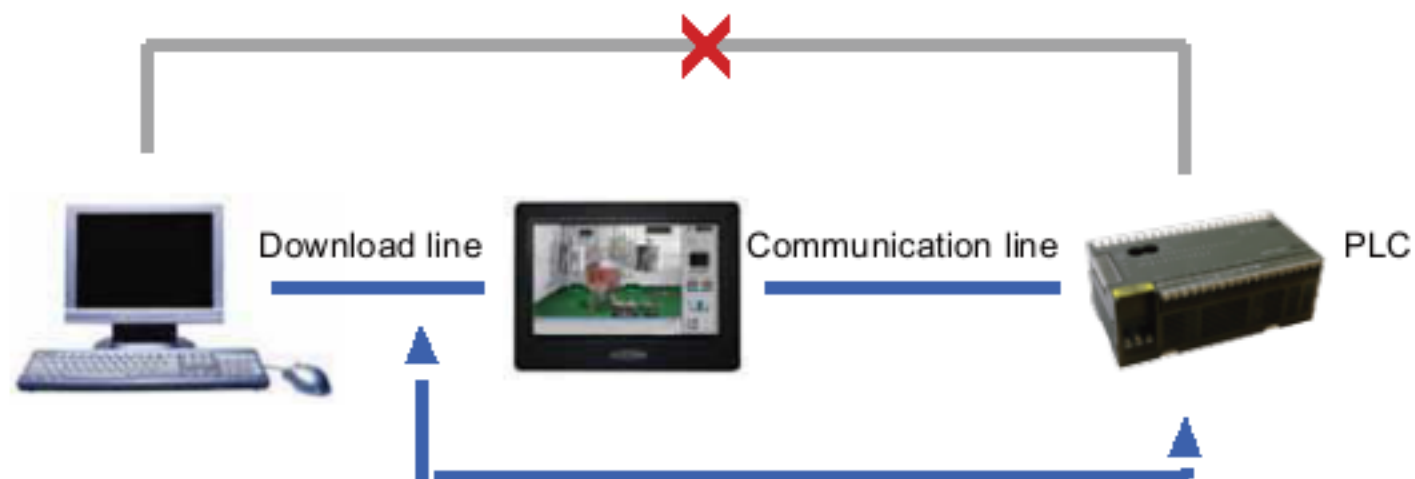
Supporting MACRO script. The MACRO The MACRO instruction is rich for users' freely writing program to realize the necessary functions.

- * Various MACRO instruction for flexible use
- * MACRO instruction Pattern of Various controlling methods for options
- * The program can be inputted various MACRO instruction



- **Transparent communication**

PC communicates through THM & PLC, which makes the debugging of PLC more convenient. When the communication style is RS422/485, the specialized PLC communication cable can be replaced. PC can directly online amend and monitor PLC system by THM without the specialized PLC communication cable.



- **Strong opening**

THM supports various communication interfaces for convenient flexible networkings as follows

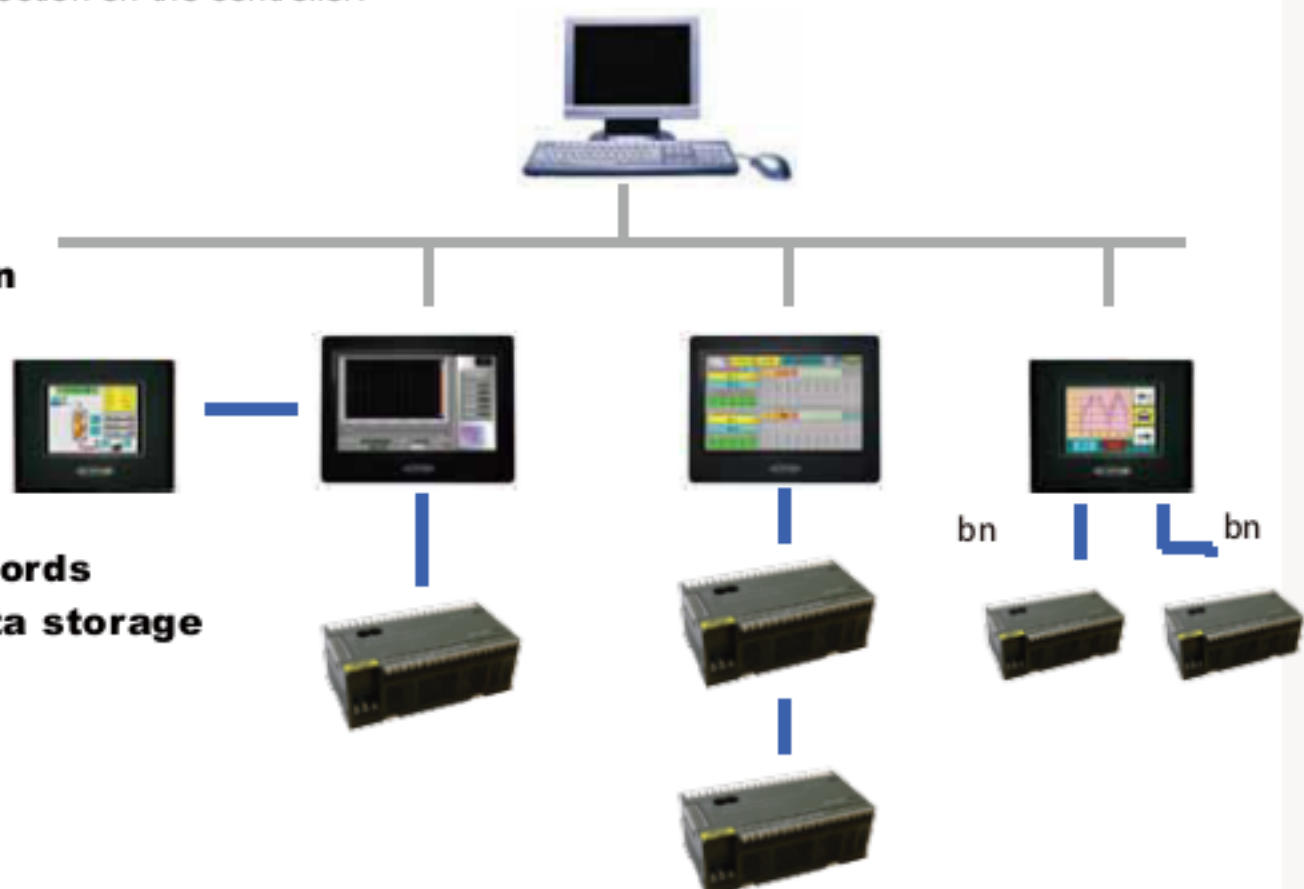
1. One HMI connecting one PLC (1:1) or the two serials of one HMI individually connecting two different controllers (2:2)
2. One serial (RS485) of one HMI connecting various controllers(1:n)
3. Various HMI (RS485) connecting one controller (n:1)
4. One HMI connecting various controllers by Ethernet.
5. One HMI connecting PC by Ethernet; Connecting the controller by serial port , which makes PC the data collection on the controller.

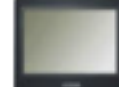
- **Supporting 8 level code protection**

- **Rich alarm function**

- **Supporting recipe function of various zones & groups.**

- **Historical data records displaying, and data storage of various zones**





Model		THM 035B	THM 043A	THM 043C3	THM 056A	THM 070S	THM 070A	THM 070AE	THM 070C3
Specification	Size	1.5"	~3"	~3"	5.6"	7.0"	7.0"	7.0"	7.0"
	Display	256 color TFT, FGD backlight	65536 color TFT, FGD backlight						
	Resolution	120x240	~60x272	~60x272	120x224	600x400	600x400	600x400	600x400
	Lightness(cd/m ²)	100	~40	~40	250	120	100	100	~40
	Touch panel	~11.5" resistance touch							
	CPU	12-bit RISC	12-bit RISC	RISC ARM 912Rte	12-bit RISC	RISC ARM 912Rte	12-bit RISC	12-bit RISC	RISC ARM 912Rte
	Memory(SDRAM)	512KB	128KB	64KB	128KB	64KB	64KB	64KB	64KB
	Battery backup memory	None	128KB (JH R optional)	128KB	128KB (JH R optional)	128KB (JH R optional)	128KB (JH R optional)	128KB (JH R optional)	128KB (JH R optional)
	Flash Memory	256KB	64KB	64KB	64KB	256KB	64KB	128+64KB	64KB
	SD card	None	None	None	None	None	None	Delta type 1GB	None
Communication interface	USB	None	1 H type-6 1GB	1 H type-6 1GB	1 H type-6 1GB	1 H type-6 1GB	1 H type-6 1GB	1 H type-6 1GB	1 H type-6 1GB
	Serial	C0H 1" RS232 C0H 2" RS422/A45	C0H 1" RS232/A22/A45 C0H 2" RS232/A45 C0H 3" RS232	1000 1" RS232/A22/A45 1000 2" RS232/A45 1000 3" RS232/A45	C0H 1" RS232/A22/A45 C0H 2" RS232/A45 C0H 3" RS232	C0H 1" RS232 C0H 2" RS422/A45 C0H 3" RS485	C0H 1" RS232/A22/A45 C0H 2" RS232/A45 C0H 3" RS232	C0H 1" RS232/A22/A45 C0H 2" RS232/A45 C0H 3" RS232	C0H 1" RS232 C0H 2" RS422/A45 C0H 3" RS485
	Ethernet	None	None	None	None	None	None	Yes	None
Electricity characteristics	Watt	6W	12W	12W	12W	12W	12W	12W	12W
	Power supply	DC20V ~ 26V	DC20V ~ 26V	12~24VDC+10% (input ~ 50% load)	DC20V ~ 26V	12~24VDC+10% (input ~ 50% load)	DC20V ~ 26V	DC20V ~ 26V	12~24VDC+10% (input ~ 50% load)
Conditions	Operation temperature	0° ~ 50°	0° ~ 50°	-10° ~ 50°	0° ~ 50°	-10° ~ 50°	0° ~ 50°	0° ~ 50°	-10° ~ 50°
	Operation humidity	10% ~ 90% RH, No condensation							
	Vibration resistance	10Hz ~ 200Hz (Y Z direction 1G/0.1 mm/s ²)							
Certifications	IP Class	IP65 (Front panel)	IP65 (Front panel)	IP65 (Front panel)	IP65 (Front panel)	IP65 (Front panel)	IP65 (Front panel)	IP65 (Front panel)	IP65 (Front panel)
	CE	EN 60947-1 EN 60947-2 EN 60947-3 EN 60947-4 EN 60947-5 EN 60947-6							
Physical specification	Dimensions (mm)	120x106x29.0	120x106x29.0	129x103x33	166x143x40	203x149x33	166x143x40	166x143x40	203x149x33
	Cutout dimensions (mm)	116.8x92.5	116.8x92.5	116.8x92.5	171.5x132.5	191.5x131.5	171.5x132.5	171.5x132.5	191.5x131.5
	Weight	0.20kg	0.20kg	0.20kg	0.24kg	0.24kg	0.24kg	0.24kg	0.24kg



THM 070C3E	THM 080A	THM 080AE	THM 101S	THM 101C3	THM 101C3E	THM 104A	THM 104AE	THM 121C3E	THM 150C3E
7.0"	8"	8"	10.2"	10.2"	10.2"	10.4"	10.4"	12.1"	15"
65536 color TFT, 170 backlights									
600×400	600×600	600×600	1024×600	1024×768	1024×768	600×600	600×600	1024×768	1024×768
400	300	300	250	350	350	400	400	300	350
4 in 1k - 4 distance power								5 in 1k - 5 distance power	
RTPC ΔRH ≥ 12Rte	12-biteRTPC	12-biteRTPC	RTPC ΔRH ≥ 12Rte	RTPC ΔRH ≥ 12Rte	RTPC ΔRH ≥ 12Rte	12-biteRTPC	12-biteRTPC	RTPC ΔRH ≥ 12Rte	RTPC ΔRH ≥ 12Rte
Φ-H R	Φ-H R	Φ-H R	Φ	Φ-H R	Φ-H R	Φ-H R	Φ-H R	Φ-H R	Φ-H R
12(KR ΔH R optional)	12(KR ΔH R optional)	12(KR ΔH R optional)	12(KR ΔH R optional)	12(KR ΔH R optional)	12(KR ΔH R optional)	12(KR ΔH R optional)	12(KR ΔH R optional)	12(KR ΔH R optional)	12(KR ΔH R optional)
Φ-H R	Φ-H R	12×Φ-H R	2(Φ-H R)	Φ-H R	Φ-H R	Φ-H R	12×Φ-H R	Φ-H R	Φ-H R
None	None	Δtem opt 160 R	None	None	None	None	Δtem opt 160 R	None	None
1 H 3pin-6 1 5bars	1 H 3pin-6 1 5bars	1 H 3pin-6 1 5bars	1 H 3pin-6 1 5bars	1 H 3pin-6 1 5bars	1 H 3pin-6 1 5bars	1 H 3pin-6 1 5bars	1 H 3pin-6 1 5bars	1 H 3pin-6 1 5bars	1 H 3pin-6 1 5bars
Q0 H 1^ RS232 Q0 H 2^ RS232/465 Q0 H 3^ RS485	C0 H 1^ RS232/465 Q0 H 2^ RS232/465 Q0 H 3^ RS232	C0 H 1^ RS232/465 Q0 H 2^ RS232/465 Q0 H 3^ RS232	C0 H 1^ RS232 Q0 H 2^ RS232/465 Q0 H 3^ RS485	C0 H 1^ RS232 Q0 H 2^ RS232/465 Q0 H 3^ RS485	Q0 H 1^ RS232 Q0 H 2^ RS232/465 Q0 H 3^ RS485	Q0 H 1^ RS232/465 Q0 H 2^ RS232/465 Q0 H 3^ RS232	C0 H 1^ RS232/465 Q0 H 2^ RS232/465 Q0 H 3^ RS232	C0 H 1^ RS232 Q0 H 2^ RS232/465 Q0 H 3^ RS485 Q0 H 4^ RS485 Q0 H 5^ RS485	C0 H 1^ RS232 Q0 H 2^ RS232/465 Q0 H 3^ RS485 Q0 H 4^ RS485 Q0 H 5^ RS485
Yes	None	Yes	None	None	Yes	None	Yes	Yes	Yes
20h	20h	20h	1.5h	1.5h	20h	20h	20h	20h	20h
12-24VDC+10N (typical)	DC20V ~ 26V	DC20V ~ 26V	12-24VDC+10N (typical)	12-24VDC+10N (typical)	12-24VDC+10N (typical)	DC20V ~ 26V	DC20V ~ 26V	24VDC+10N (typical)	24VDC+10N (typical)
-10° ~ 60°	0° ~ 20°	0° ~ 20°	-10° ~ 50°	-10° ~ 50°	-10° ~ 60°	0° ~ 50°	0° ~ 20°	-10° ~ 60°	-10° ~ 60°
10N ~ 20N RH, No condensation									
10H x 1 5pin x 7 7 direction I/O/10 m thread									
P24-F (optional)	P65-F (optional)	P65-F (optional)	P65-F (optional)	P24-F (optional)	P24-F (optional)	P65-F (optional)	P65-F (optional)	P24-F (optional)	P24-F (optional)
PM220 22" PM61000-2" PM61000-6" PM61000-6"									
200.5×146.5×17	221.6×174.6×25	221.6×174.6×25	270.6×212.6×17	270.6×212.6×40	270.6×212.6×40	270.1×212.1×42	270.1×212.1×42	335.4×249.4×26.2	399.1×297.6×27.5
191.5×137.5	220.5×161.5	220.5×161.5	259.5×201.5	259.5×201.5	259.5×201.5	259.0×201.0	259.0×201.0	302×226	364.5×263.0
0.6kg	0.90kg	0.90kg	1.2kg	1.2kg	1.2kg	1.2kg	1.2kg	2.2kg	2.6kg

Model	Description
THM 035B	3.5" TFT LCD * 256 colors* LED backlight* 320x240 resolution* No USB interface & Ethernet
THM 043A	4.3" TFT LCD * 16.9* 65536 colors* LED backlight* 480x272 resolution* 2 USB interfaces * No Ethernet
THM 043C3	4.3" TFT LCD * 16.9* 65536 colors. LED backlight* 480x272 resolution. 2 USB interfaces* No Ethernet
THM 056A	5.6" TFT LCD ,65536 colors* LED backlight* 320x234 resolution* 2 USB interfaces* No Ethernet
THM 070S	7" TFT LCD * 16.9* 65536 colors* LED backlight* 800x480 resolution* 2 USB interfaces * No Ethernet* Only 30 pages are supported
THM 070A	7" TFT LCD * 16.9* 65536 colors* LED backlight* 800x480 resolution* 2 USB interfaces* No Ethernet.
THM 070AE	7" TFT LCD * 16.9* 65536 colors* LED backlight* 800x480 resolution* 2 USB interfaces * With Ethernet* Additional 128M of storage space
THM 070C3	7" TFT LCD * 16.9.65536 colors* LED backlight* 800x480 resolution* 2 USB interfaces * No Ethernet
THM 070C3E	7" TFT LCD * 16.9.65536 colors* LED backlight* 800x480 resolution* 2 USB interfaces * With Ethernet
THM 080A	8" TFT LCD * 65536 colors* LED backlight* 800*600 resolution* 2 USB interfaces* No Ethernet
THM 080AE	8" TFT LCD ,65536 colors, LED backlight* 800x600 resolution, 2 USB interfaces* With Ethernet* Additional 128M of storage space
THM 101S	10.1" TFT* 16.9* 65536 colors* LED backlight* 1024*600 resolution* 2 USB interfaces* No Ethernet* Only 30 pages are supported
THM 101C3	10.1" TFT* 16.9* 65536 colors* LED backlight* 1024*768 resolution* 2 USB interfaces* No Ethernet
THM 101C3E	10.1" TFT* 16.9* 65536 colors* LED backlight* 1024*768 resolution* 2 USB interfaces* With Ethernet
THM 104A	10.4" TFT* 65536 colors* LED backlight* 800*600 resolution* 2 USB interfaces* No Ethernet.
THM 104AE	10.4" TFT* 65536 colors* LED backlight* 800*600 resolution* 2 USB interfaces* With Ethernet* Additional 128M of storage space.
THM 121C3E	12.1" TFT* 16.9* 65536 colors* LED backlight* 1024*768 resolution* 2 USB interfaces* With Ethernet
THM 150C3E	15" TFT* 65536 colors* LED backlight* 1024*768 resolution* 2 USB interfaces* With Ethernet

BAM S1-D attached SCADA Software

Banner Engineering Corporate | Banner Electronic (Suzhou) Co., LTD

Shanghai Rep Office (The marketing headquarters in China):

12th Floor* No.2 Xinlian Scientific Research Building, No. 1535 Hongmei Road, Shanghai

Postal Code* 200030

Telephone* 021-24226888

Facsimile* 021-24226999

The nation-wide technical service hotline: 400-630-6336

Web* www.bannerengineering.com.cn

Email* automation@bannerengineering.com.cn

