

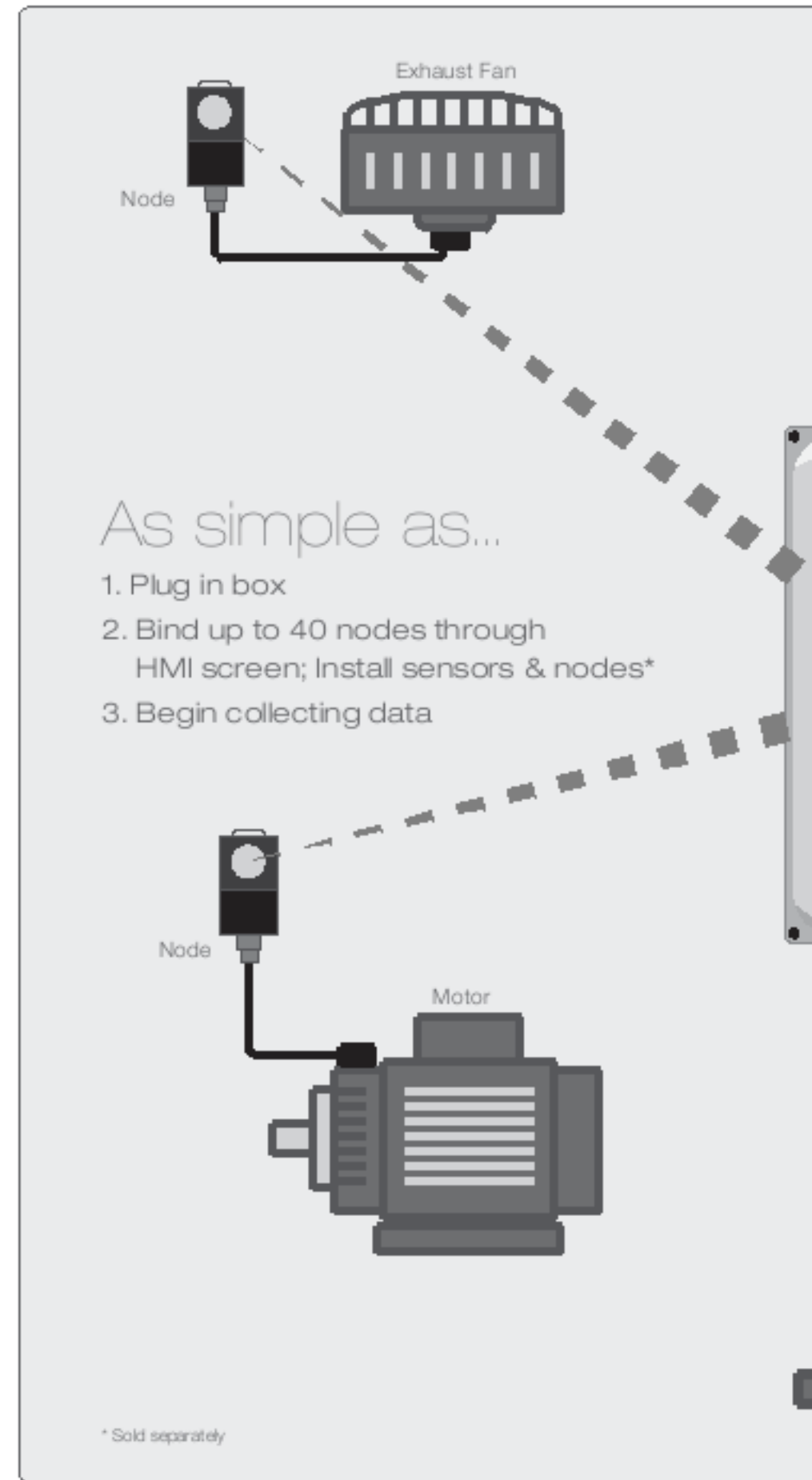
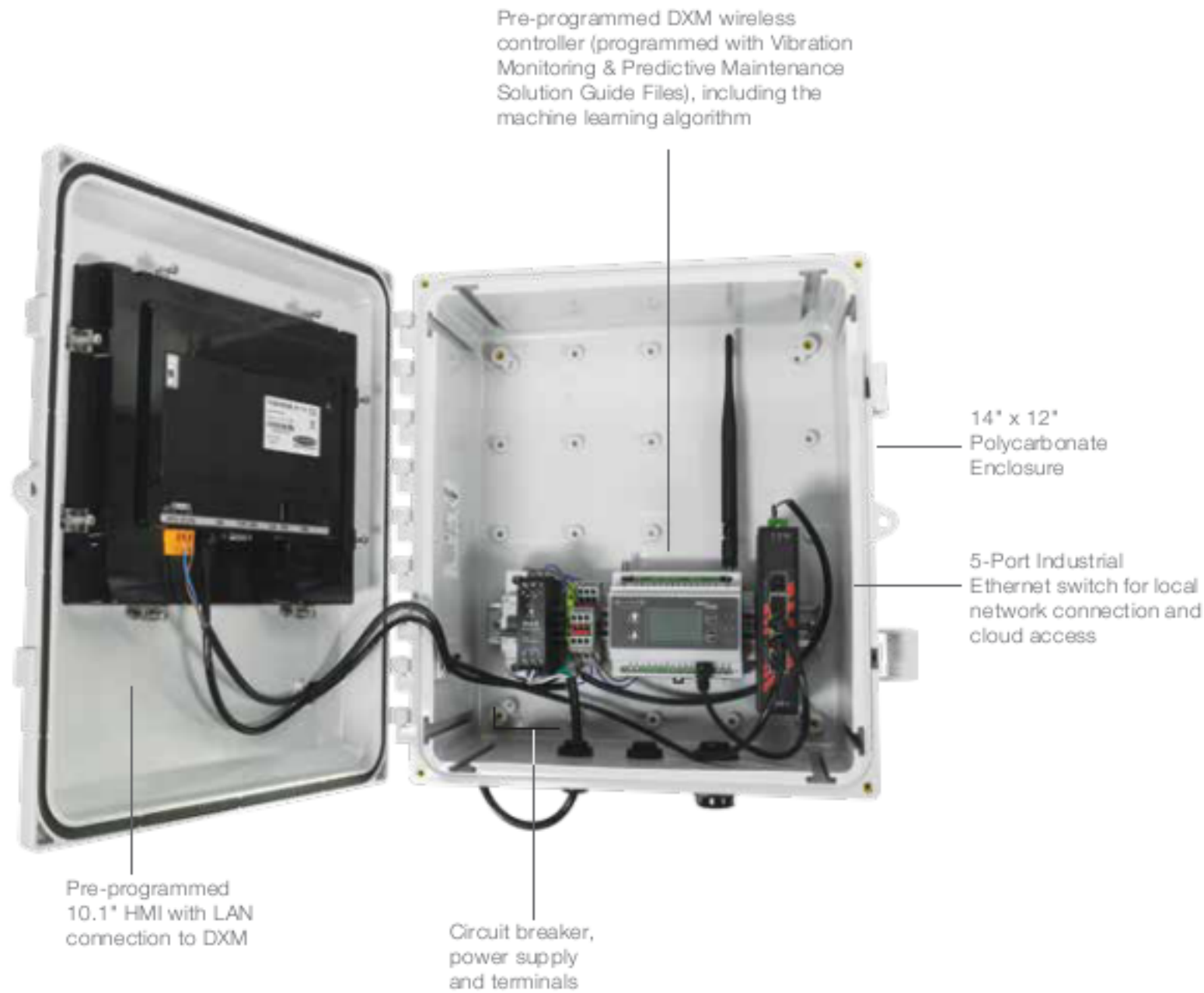


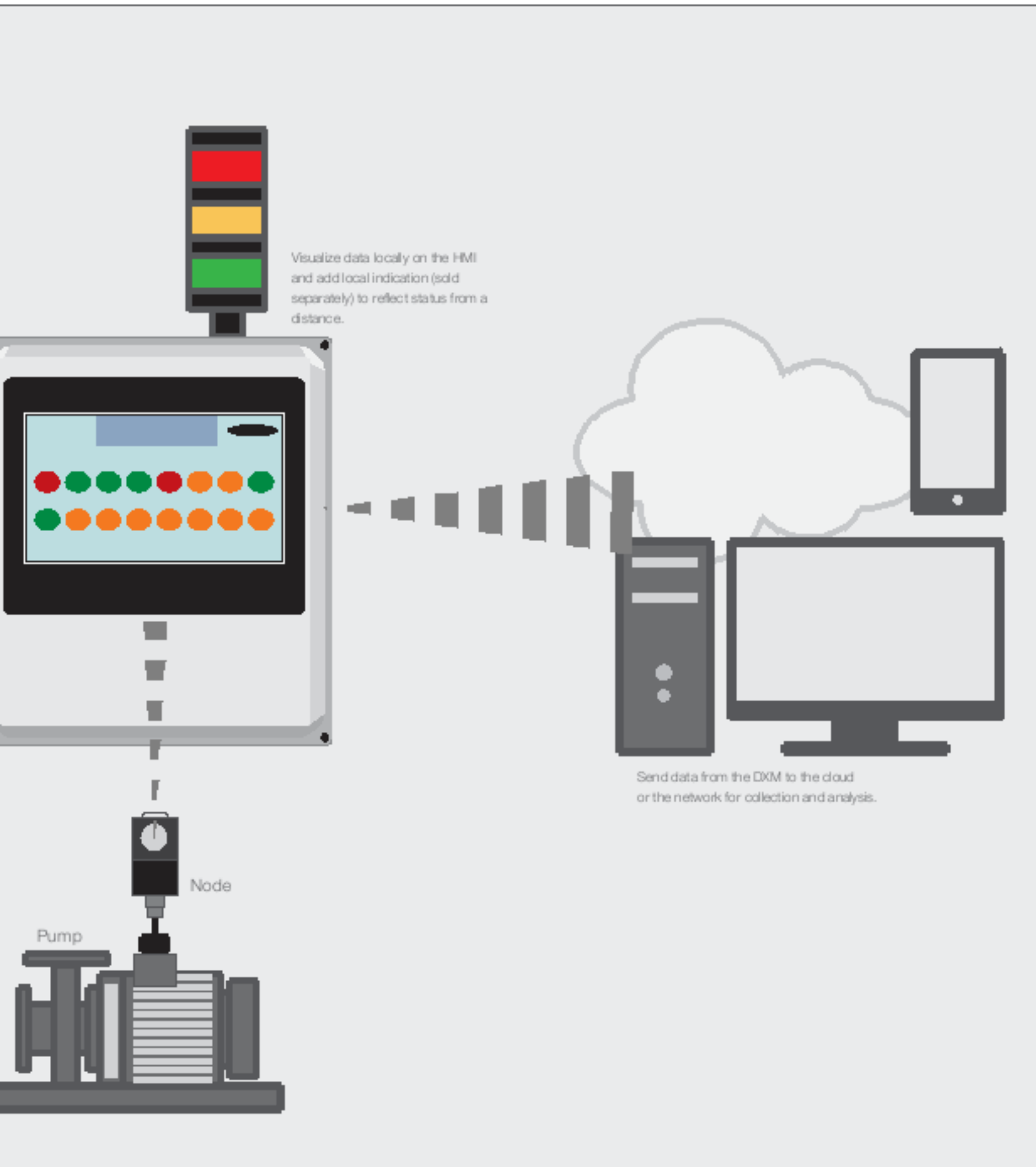
Wireless Solutions Kits: Vibration

- Easily monitor machine vibration on any rotating asset
 - Reduce downtime and plan needed maintenance
 - Efficiently manage replacement parts
 - Track machine faults and warranty
- Fully integrated solution for easy setup
 - Setup wireless network using HMI interface
 - No programming needed
- Visualize data locally on the HMI, send it to the network, or view it remotely via the cloud



Wireless Solutions Kits: Vibration





Data Collection

- Samples every 5 minutes of RMS velocity and high frequency acceleration for X and Z axes
- Determines whether the asset is running, and only uses data when it is running
- Creates baseline over first 300 running samples
- Warning and alarm thresholds are automatically created for each vibration characteristic during baseline period
- Thresholds are set for both acute faults (quickly occurring) and chronic faults (long term deterioration)

HMI shows dashboard with a "Check Engine Light" for each asset



Touch an asset icon to view raw data, baselines and thresholds



Wireless Solutions Kits: Vibration



* Available with VIBE model only

Vibration and Temperature Sensor

Models	Description
QM42VT1	Vibration and temperature sensor with 1-wire serial interface

Supply Voltage	3.6 to 5.5 V dc or 10 to 24 V dc
Current	Active comms: QM42VT1: 11.9 mA at 5.5 V dc
Indicators	Green flashing: Power ON Amber flicker: Serial Tx
Vibration	Mounted base resonance: 5.5 kHz nominal Measuring range: 0-46 mm/sec or 0-1.8 in/sec RMS Frequency Range: 10 - 1000 Hz Accuracy: ± 10% @25 °C
Temperature	Measuring range: -40 to +105 °C (-40 to +221 °F) Resolution: 0.1 °C Accuracy: ±3 °C
Environmental Rating	NEMA 6P, IEC IP67
Shock	400G
Cable Connection	Integral 5-pin M12/Euro-style male quick disconnect (QD)

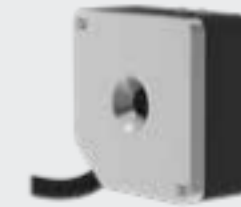


Nodes with 1-Wire Serial Interface

Models	Description	Frequency
DX80N9Q45U	Q45 Wireless Node with integrated battery	900 MHz
DX80N2Q45U	Q45 Wireless Node with integrated battery	2.4 GHz
DX80N9Q45VTP	Q45 Vibration and Temperature Node	900 MHz
DX80N2Q45VTP	Q45 Vibration and Temperature Node	2.4 GHz
DX80N9X1S-P6	1-wire Serial Performance Node with integrated battery	900 MHz
DX80N2X1S-P6	1-wire Serial Performance Node with integrated battery	2.4 GHz
DX80N9X6S-P6	1-wire Serial Performance Node 10 to 30 V dc	900 MHz
DX80N2X6S-P6	1-wire Serial Performance Node 10 to 30 V dc	2.4 GHz
DX80N9X1W-P6L	1-wire Serial Performance Node with integrated battery	900 MHz
DX80N2X1W-P6L	1-wire Serial Performance Node with integrated battery	2.4 GHz
DX80N9X1W-CM1L	Vibration and current transformer inputs	900 MHz
DX80N2X1W-CM1L	Vibration and current transformer inputs	2.4 GHz

Accessories

Brackets



BWA-BK-005



BWA-BK-008



BWA-BK-001 (magnet)

Cordsets



Type	Model
5-Pin M12/Euro-Style— Double-Ended	DEE2R-51D 0.31 m (1 ft)
	DEE2R-53D 0.91 m (3 ft)
	DEE2R-58D 2.44 m (8 ft)

