

Features

Phase decentralized field power supply with protection class ratings of IP54, IP65, and IP67

- PS67K-1S-24L-150 is an industrial-grade power supply for the one-phase mains system
- Robust housing
- Quick-disconnect connectivity options facilitate flexible positioning directly on the machine
- One 100–240 V AC input or one 110–300 V DC input
- 15 A output current
- Protected by four separate E fuses
- IO-Link interface for parameterization and checking device status
- LED interface and buttons for diagnostics and flexibility
- One S-code M12 input port
- Two L-code M12 output ports



Models

Model	PULS Equivalent	Output Current and Voltage	Input Voltage
PS67K-1S-24L-150	FPS300.245-034-105	Four switchable 24 V DC (15 A) Outputs (360 W)	100-240 V AC or 110-300 V DC

Wiring

Input connector on power supply (X1)

4-pin S-Code M12 Male QD	Pins	Description
	PE	Protected earth ground
	2	L1
	3	N

IO-Link connector on power supply (X2)

5-pin M12 Male QD	Pins	Description
	1	24 V DC
	2	No connection/not used
	3	GND supply voltage
	4	Data in/out
	5	No connection/not used

Output connector on power supply (X3 and X4)

5-pin L-Code M12 Female QD	Pins	Description
	1	24 V DC (Out 2 4) Us Sensor output
	2	GND (Out 1 3) Ua Actor output
	3	GND (Out 2 4) Us Sensor output
	4	24 V DC (Out 1 3) Ua Actor output
	5	FE

Installation

The user is responsible for satisfying all local, state, and national laws, rules, codes, and regulations relating to the use of this product and its application. Refer to the PULS datasheet (DS-FPS300.245-034-105-en) at www.pulspower.com for all installation information and requirements.





WARNING: Shock Hazard and Hazardous Energy—Always disconnect power from the device and the machine being controlled before making any connections or replacing any component. Electrical installation and wiring must be made by Qualified Personnel and must comply with the relevant electrical standards and wiring codes, such as the NEC (National Electrical Code), ANSI NFPA 79, or IEC 60204-1, and all applicable local standards and codes. Lockout/tagout procedures may be required. Refer to OSHA 29CFR 1910.147, ANSI Z244-1, ISO 14118, or the appropriate standard for controlling hazardous energy.



WARNING: Risk of electrical shock, fire, personal injury, or death.

1. Do not use the power supply without proper grounding (Protective Earth).
2. Turn the power off before working on the device. Protect against inadvertent re-powering.
3. Ensure the wiring is correct by following all local and national codes.
4. Do not modify or repair the unit.
5. Do not open the unit as high voltages are present inside.
6. Use caution to prevent any foreign objects from entering the housing.
7. Do not use in wet locations or in areas where moisture or condensation can be expected.
8. Do not touch during power-on, and immediately after power-off. Hot surfaces may cause burns.

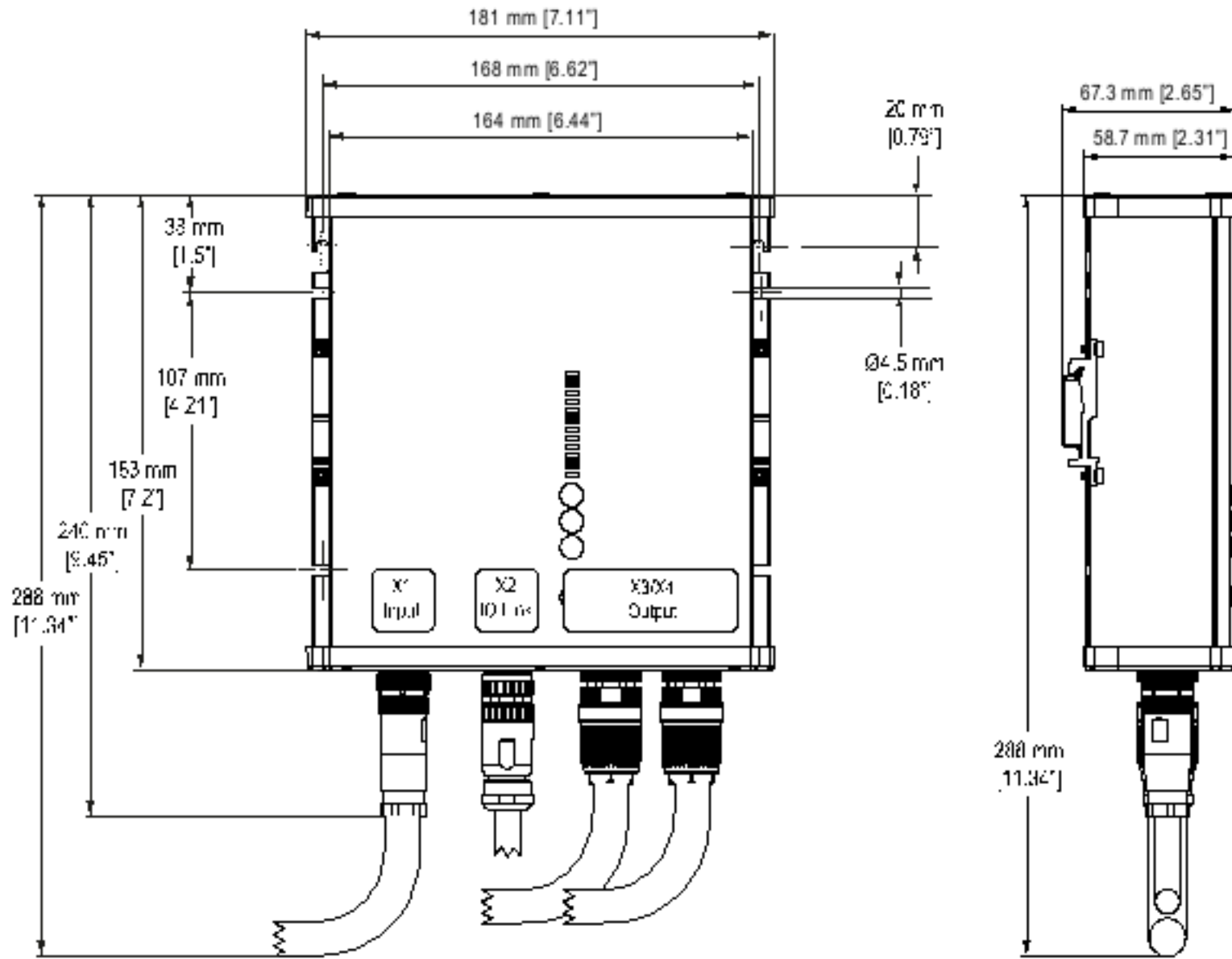
Specifications

If there are any discrepancies between this document and information provided by PULS, the PULS information takes precedence.

Output voltage 24 V DC Nominal	Input voltage AC: 1 AC 100-240 V AC, -15% / +10% DC: 110-300 V DC, ±20% (For DC supply voltages above 150 V DC an external fuse is required.)
Adjustment range 24-28 V DC Factory setting: 24.5 V	Dimensions (w x h x d) 181 x 183 x 59 mm, without connectors
Output power 360 W up to +45 °C 300 W up to +55 °C 150 W up to +70 °C	Weight 1200 g (2.7 lb)
Number of outputs Four	Operating Conditions -25 °C to +70 °C (-13 °F to +158 °F)
Output currents Configurable per output; up to 12 A	Environmental Rating IP54, IP65, IP67

Dimensions

All measurements are listed in millimeters, unless noted otherwise. The measurements provided are subject to change.



Accessories

5-pin L-Code Single-Ended M12 Female Cordsets			
Model	Length	Dimensions (mm)	Pinout (Female)
BCP-M 12LF5-14-1	1 m (3.28 ft)		
BCP-M 12LF5-14-2	2 m (6.56 ft)		
BCP-M 12LF5-14-5	5 m (16.4 ft)		
BCP-M 12LF5-14-10	10 m (32.8 ft)		
BCP-M 12LF5-14-15	15 m (49.2 ft)		
BCP-M 12LF5-14-20	20 m (65.6 ft)		

5-pin L-Code Double-Ended M12 Female to M12 Male Cordsets				
Model	Length	Dimensions (mm)	Pinout (Female)	Pinout (Male)
BCP-M12LF5-M12LM5-14-1	1 m (3.28 ft)		<p>1 = Brown 2 = White 3 = Blue 4 = Black 5 = yellow/green shell = braid</p>	<p>1 = Brown 2 = White 3 = Blue 4 = Black 5 = yellow/green shell = braid</p>
BCP-M12LF5-M12LM5-14-2	2 m (6.56 ft)			
BCP-M12LF5-M12LM5-14-5	5 m (16.4 ft)			
BCP-M12LF5-M12LM5-14-10	10 m (32.8 ft)			
BCP-M12LF5-M12LM5-14-15	15 m (49.2 ft)			
BCP-M12LF5-M12LM5-14-20	20 m (65.6 ft)			

Model	Housing	Power Connections	Power Drops	Wiring
R50-M12LM5-M12LF5-2M12F5-P13	4-Port Molded Junction Box	1 x L-code male M12 1 x L-code female M12	2 x A-code female M12	V+, V- power distribution

Model	Female Ports	Male Input Port	Wiring
R50-2M125L-M125-P	Two 5-pin L-code M12 female quick-disconnect connectors, oriented in-line	One 5-pin M12 L-Code male quick-disconnect connector	Parallel
R50T-2M125L-M125-P	Two 5-pin L-code M12 female quick-disconnect connectors, oriented in a tee		

4-pin A-Code Double-Ended M12 Female to M12 Male Cordsets				
Model	Length	Dimensions (mm)	Pinouts	
BC-M12F4-M12M4-22-1	1 m (3.28 ft)		<p>Female</p> <p>Male</p>	<p>1 = Brown 2 = White 3 = Blue 4 = Black</p>
BC-M12F4-M12M4-22-2	2 m (6.56 ft)			
BC-M12F4-M12M4-22-3	3 m (9.84 ft)			
BC-M12F4-M12M4-22-4	4 m (13.12 ft)			
BC-M12F4-M12M4-22-5	5 m (16.4 ft)			
BC-M12F4-M12M4-22-10	10 m (30.81 ft)			
BC-M12F4-M12M4-22-15	15 m (49.2 ft)			

4-pin A-Code Double-Ended M12 Female to M12 Male Right-Angle Cordsets				
Model	Length	Dimensions (mm)	Pinouts	
BC-M12F4-M12M4A-22-1	1 m (3.28 ft)		<p>Female</p> <p>Male</p>	<p>1 = Brown 2 = White 3 = Blue 4 = Black</p>
BC-M12F4-M12M4A-22-2	2 m (6.56 ft)			
BC-M12F4-M12M4A-22-5	5 m (16.4 ft)			
BC-M12F4-M12M4A-22-8	8 m (26.25 ft)			
BC-M12F4-M12M4A-22-10	10 m (30.81 ft)			
BC-M12F4-M12M4A-22-15	15 m (49.2 ft)			

4-pin A-Code Double-Ended M12 Female Right-Angle to M12 Male Right-Angle Cordsets				
Model	Length	Dimensions (mm)	Pinouts	
BC-M12F4A-M12M4A-22-0.3	0.3 m (1 ft)		<p>Female</p> <p>Male</p>	<p>1 = Brown 2 = White 3 = Blue 4 = Black</p>
BC-M12F4A-M12M4A-22-1	1 m (3.28 ft)			
BC-M12F4A-M12M4A-22-2	2 m (6.56 ft)			
BC-M12F4A-M12M4A-22-5	5 m (16.4 ft)			
BC-M12F4A-M12M4A-22-8	8 m (26.25 ft)			
BC-M12F4A-M12M4A-22-10	10 m (30.81 ft)			
BC-M12F4A-M12M4A-22-15	15 m (49.2 ft)			