

SD50 Status Display

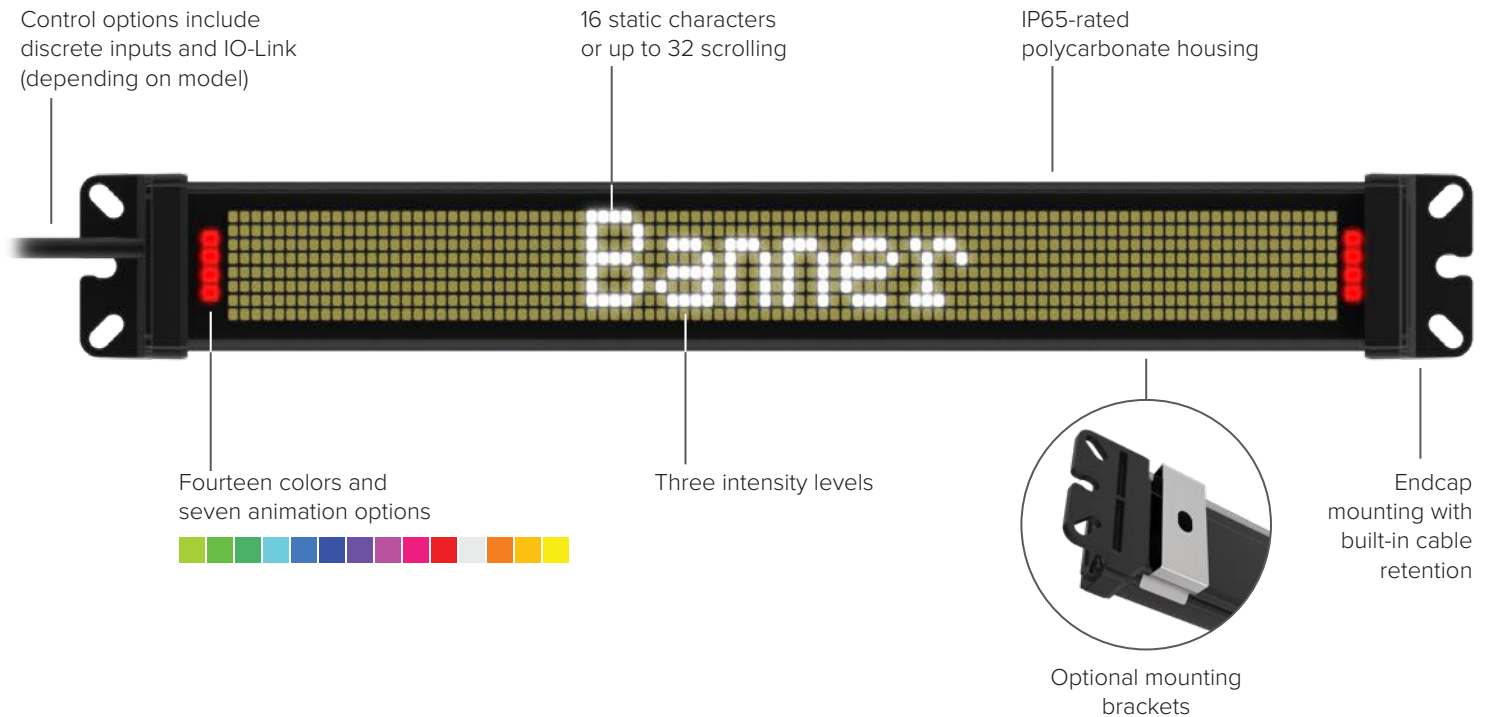


Provide More Status Information in the Most Helpful Locations

- Easily configurable, versatile display can be installed nearly anywhere, making it a simple yet powerful alternative to complex HMIs and other displays
- Great for displaying takt time, equipment status, assembly sequences, counts, and measurements where they are most useful
- Discrete and IO-Link models integrate into many different systems and applications, especially Banner sensing, safety, and monitoring solutions
- Quick and easy configuration—define the desired text and call it via discrete control or process data
- Bright white LED display and multicolored status LEDs legible from 10 meters away inform operators about exactly what is going on so they can respond quickly and accurately



SD50 Features and Functionality



Communicate Critical Information

Equipment Status

Translate machine outputs to actionable information



Assembly Instructions

Step through sequential operator guidance



Measurement

Convert and display dynamic sensor outputs like distance, level, and more



Timer

Start, stop, and reset the timer to display takt time and more

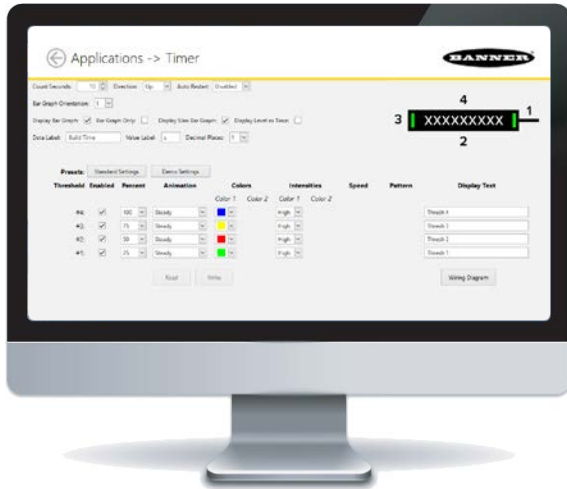


Counter

Increase or decrease the count value based on input pulses

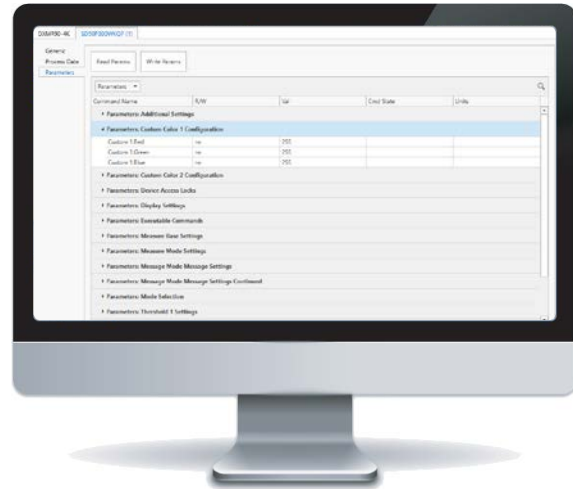


How It Works



Discrete Model

Configure text and indication via Pro Editor and control what is displayed via the discrete inputs (Pro converter cable sold separately)



IO-Link Model

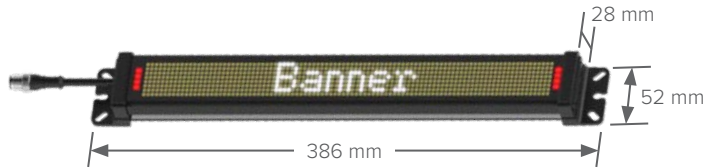
Choose a mode and advanced functionality in parameter data, then use process data to send strings and values for dynamic indication and display updates



SD50 Status Display

Description	Display Length	Control	Connection	Models
SD50 Pro Status Display	300 mm	Discrete	150 mm PVC-jacketed cable with 4-pin M12 male QD	SD50P300WD15QP
		IO-Link		SD50P300WKQP

Specifications



Supply Voltage	18 to 30 V DC
Construction	Polycarbonate
Operating Conditions	-20 to +60 °C
Environmental Rating	IP65
Certifications	

Accessories



PRO-KIT
Pro editor accessory kit for configuration of discrete models with Pro Editor software



LMBSD50
Clip bracket



LMBSD50MAG
Magnetic clip bracket



LMBSD50-180S
180° clip bracket



LMBSD50-180SMAG
180° magnetic clip bracket



DXMR90-4K
Multiprotocol four port IO-Link Master



DXMR110-8K
Multiprotocol eight port IO-Link Master



R45C-2K-MQ
Two port IO-Link Master with Modbus RTU Interface



R90C-4K-MQ
Four port IO-Link Master with Modbus RTU Interface



M12 Cordset
Straight connector models listed; for right-angle models, add RA to the end of model number (example, MQDC-406RA)

4-Pin	5-Pin
MQDC-406 2 m (6.5')	MQDC1-506 2 m (6.5')
MQDC-415 5 m (15')	MQDC1-515 5 m (15')
MQDC-430 9 m (30')	MQDC1-530 9 m (30')



M12 Double-ended Cordset
Straight connector models

4-Pin	5-Pin
MQDEC-401SS 0.31 m (1')	MQDEC-401SS 0.31 m (1')
MQDEC-403SS 0.61 m (3')	MQDEC-403SS 0.61 m (3')
MQDEC-406SS 2 m (6.5')	MQDEC-406SS 2 m (6.5')



Banner Engineering Corp.

1-888-373-6767 • www.bannerengineering.com

© 2025 Banner Engineering Corp. Minneapolis, MN USA

PN B_51932114