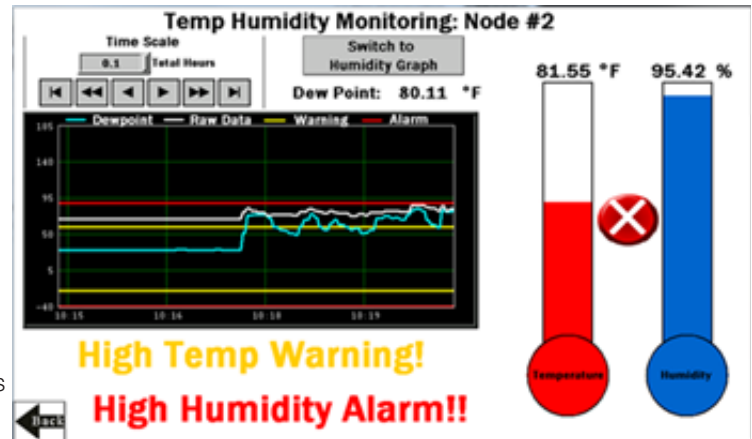


## Challenge

Maintaining proper temperature and humidity levels can be key to ensuring equipment operates efficiently, processes run smoothly, employees are comfortable and productive, and products and raw materials are protected to ensure quality and maximize shelf life. Access to timely, accurate environmental information makes it easier to identify and respond to environmental conditions that are outside required parameters.

## Banner Wireless Value

- **Visualize Data and Alarms:** HMI clearly displays alarms and graphs of temperature and humidity data along with alarm levels
- **Calculated Dew Point:** System displays, graphs, and logs calculated dew points for each sensor
- **Simplicity:** Plug in the box, bind the Nodes through the HMI screen, install the sensors, and start collecting data; no programming required
- **Capability:** Monitor environmental conditions in up to 40 locations with Wireless Performance Nodes connected to Banner Temp/Humidity sensors
- **Local Indication:** Enable the Q45 LEDs, using the HMI, to quickly and easily identify areas that are outside of required environmental parameters
- **Peel and Stick:** Battery-powered Nodes connected to temp/humidity sensors are easy to deploy in a variety of locations
- **IIoT:** Connect to the network or the Internet for remote monitoring
- **Productivity and Safety:** Ensure environmental conditions are optimal and safe for processes and employees



## Banner Wireless Temp/Humidity Solutions Kit

Everything needed in one solution – Just add the Node/sensors as required

- Pre-programmed DXM (using a unique version of the Temperature and Humidity Monitoring Solution Guide files)
- Pre-programmed 10.1" touchscreen HMI for visualizing data
- 5-port Industrial Ethernet switch for network connection
- View up to seven days of data history on the HMI while archiving over 30 days of logged data in CSV files on HMI
- Bind and perform site surveys of Nodes through the HMI
- Add local indication of faults using optional DXM outputs to tower lights or indicator lights

## Key Applications

- Energy and facility management
- Manufacturing processes
- Warehouse and storage facilities
- Data centers and server rooms
- Greenhouses and agricultural settings

## Solution Kit Models

Model Number	DXM Gateway	Additional Notes
SolutionsKit9-TH	900 MHz Performance	Supports Q45TH, Q45U, P6, or P6L Nodes; supports both Imperial (Fahrenheit) and Metric (Celsius) units
SolutionsKit2-TH	2.4 GHz Performance	