

Enclosed Yagi Antenna Series

PCTEL's directional yagis can be used as bridge antennas between two networks or for point-to-point communications. They are field adjustable for vertical or horizontal polarization with matched principal plane beamwidths for optimum performance in either orientation. This design also provides improved front-to-back ratio and sidelobe suppression that reduces interference. All models feature a robust mounting structure for consistent performance regardless of weather conditions.

Features

- Field adjustable to allow vertical or horizontal polarity. Eliminates co-channel interference from neighboring radiators. Polarity markings molded on the antenna ensure installation in the correct orientation.
- Optional, articulating mount. Allows precise adjustment of the antenna both vertically and horizontally.
- All antennas include a robust mast mount bracket designed to withstand 125 mph wind.
- Matched principal plane beamwidths with excellent sidelobe suppression and cross-polarization rejection of more than 20 dB. Provides superior signal quality with enhanced gain performance and minimal interference from neighboring radiators.
- 30 dB front-to-back ratio permits less physical separation on the tower thus adding mounting flexibility at installation sites where space is limited.
- Attractive weather-proof radome constructed of UV resistant material. Provides robust and trouble-free use in harsh outdoor environments.



MYP24015PTNF or WISP24015PTNF



MYP24010PTNF



MYK18



Technical Data

General Specifications: 2.4 GHz ISM enclosed yagi antenna series
Maximum Power: 5 watts
Polarization: Vertical or horizontal, linear (user adjustable)
Nominal Impedance: 50 ohms
VSWR: < 1.5:1
Termination: N, female is standard, NM optional
Mounting Method: Heavy duty yagi mounting bracket (included) permits mast mounting on masts up to 2" O.D. MYK18 adjustable wall/pipe mount allows 180° (included angle) azimuth and elevation adjustment (sold separately.) Stacking harnesses available to stack two yagis (sold separately.)

RF/Electrical Specifications

Model	Frequency Range	Nominal Gain	Horizontal Beamwidth @ 1/2 Power	Vertical Beamwidth @ 1/2 Power	Front-to-Back Ratio
MYP24010PTNF	2.4-2.485 GHz	10 dBi	55°	55°	23 dB
MYP24014PTNF	2.4-2.485 GHz	14 dBi	30°	30°	30 dB
MYP24015PTNF	2.3-2.7 GHz	10 dBi	30°	30°	30 dB
MYP24015PTNM	2.3-2.7 GHz	10 dBi	30°	30°	30 dB
WISP24015PTNF	2.4-2.48 GHz	15 dBi	30°	30°	30 dB

Mechanical Specifications

Model	Length	Weight (Mass)	Lateral Thrust at Rated Wind	Equivalent Flat Plate Area	Wind Survival	Cable
MYP24010PTNF	4.5" L x 3" OD (114 x 76 mm)	1 lb (0.5 kg)	5.8 lbs	0.060 ft ²	125 mph	3' (914.4 mm) coax
MYP24014PTNF	14" x 3" OD (356 x 76 mm)	1 lb (0.5 kg)	18.3 lbs	0.20 ft ²	125 mph	36" (914 mm) coax
MYP24015PTNF	14" x 3" OD (356 x 76 mm)	1 lb (0.5 kg)	18.3 lbs	0.20 ft ²	125 mph	18" (457 mm) coax
MYP24015PTNM	14" x 3" OD (356 x 76 mm)	1 lb (0.5 kg)	18.3 lbs	0.20 ft ²	125 mph	18" (457 mm) coax
WISP24015PTNF	14" x 3" OD	1 lb (0.5 kg)	18.3 lbs	0.20 ft ²	125 mph	18" (457 mm) coax

Product Warranty

A. General Warranty. PCTEL, Inc ("PCTEL") represents and warrants that the Products furnished hereunder shall be free from defects in material and workmanship for a period of two (2) years from the date of shipment by PCTEL under normal use and operation. PCTEL sole and exclusive obligation under the foregoing warranty shall be to repair or replace, at its option, any defective Product that fails during the warranty period. The expense of removal and reinstallation of any item is not included in this warranty. THE FOREGOING WARRANTY IS EXCLUSIVE AND IN LIEU OF ALL OTHER WARRANTIES, EXPRESS OR IMPLIED, INCLUDING THE IMPLIED WARRANTIES OF MERCHANTABILITY AND FITNESS FOR A PARTICULAR PURPOSE AND ANY WARRANTIES ARISING FROM A COURSE OF DEALING, USAGE OR TRADE PRACTICE WITH RESPECT TO THE PRODUCTS. Repair or replacement in the manner provided herein shall be the sole and exclusive remedy of Buyer for breach of warranty and shall constitute fulfillment of all liabilities of PCTEL with respect to the quality and performance of the Products. PCTEL reserves the right to inspect all defective Products (which must be returned by Buyer to PCTEL factory freight prepaid). No Products will be accepted for replacement or repair without obtaining a Return Materials Authorization (RMA) number from PCTEL Customer Service [by telephone: 630.372. 6800 or email: antenna.techsupport@pctel.com]. Products returned without an RMA number will not be processed and will be returned to Buyer freight collect. PCTEL shall have no obligation to make repairs or replacement necessitated by catastrophe, fault, negligence, misuse, abuse, or accident by Buyer, Buyer's customers or any other parties. The warranty period of any repaired or replaced Product shall not extend beyond its original term.

B. Warranty Conditions. The foregoing warranty shall apply only if: (i) the Product has been properly installed and used at all times in accordance, and in all material respects, with the applicable Product documentation; (ii) no modification, alteration or addition has been made to the Product by persons other than PCTEL or PCTEL's authorized representatives or otherwise approved by PCTEL; and (iii) the Product has not been subjected to misuse, neglect or unusual physical, electrical or electromagnetic stress, or some other type of accident. C. Disclaimer. PCTEL DOES NOT WARRANT THAT THE OPERATION OF THE PRODUCTS IS ERROR-FREE OR THAT OPERATION WILL BE UNINTERRUPTED. IN NO EVENT SHALL PCTEL BE RESPONSIBLE FOR DAMAGES OR CLAIMS OF ANY NATURE OR DESCRIPTION RELATING TO (i) SYSTEM PERFORMANCE, INCLUDING COVERAGE, (ii) BUYER'S SELECTION OF PRODUCTS FOR BUYER'S APPLICATION AND/OR (iii) FAILURE OF PRODUCTS TO MEET GOVERNMENT OR REGULATORY REQUIREMENTS.

RETURNS

In the unlikely event a defect occurs in this product, please work through the dealer or distributor from which this product was purchased. PCTEL, Inc. provides complete service and support to all of its dealers and distributors.

MAXRAD

471 Brighton Drive
Bloomington, Illinois 60108



2.4 GHz ISM ENCLOSED YAGI DIRECTIONAL ANTENNA SERIES INSTRUCTION SHEET

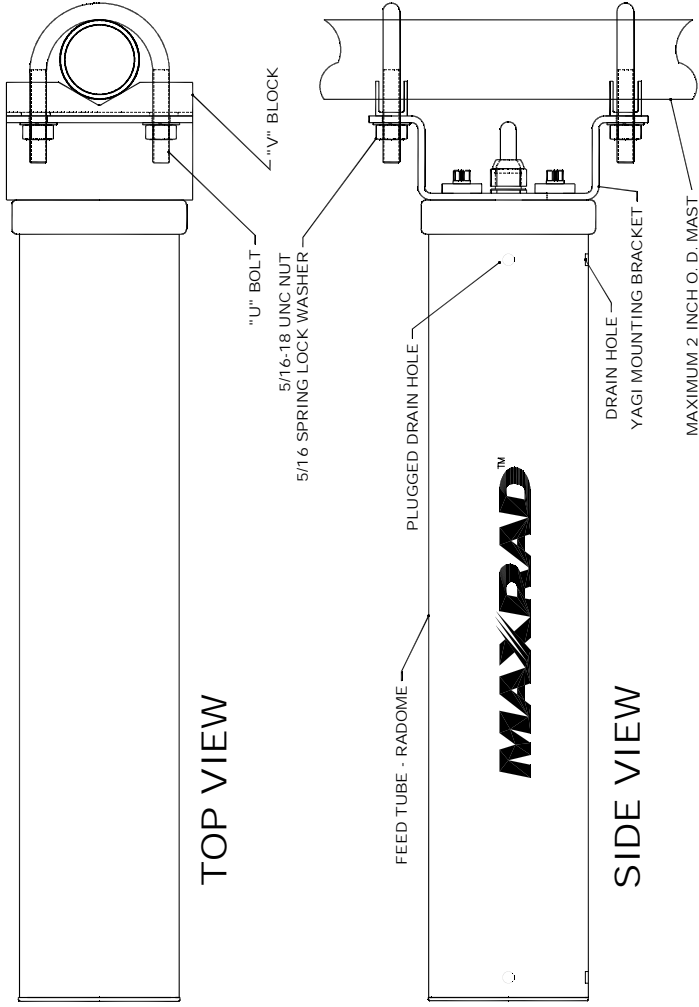
© 2007 PCTEL, Inc.
All rights reserved.

Part #: MIS-MYP2400-2 Rev. A

SEE PAGE 3 FOR MOUNTING IN HORIZONTAL POLARIZATION MODE, THE ANTENNA IS SHIPPED IN VERTICAL MODE.

Remove the bag of hardware from the carton and verify that it contains the following hardware: two (2) "V" blocks, two (2) "U" bolts, four (4) 5/16-18 hex nuts, four (4) spring lock washers and one (1) piece of sealant wrap.

1. Place a "U" bolt around the mast and place a "V" block on the "U" bolt. Next place the holes in the top flange of the Yagi on the "U" bolt. Now place a spring lock washer on each end of the "U" bolt. Finally, start a hex nut on each end of the "U" bolt and tighten finger tight.
2. Repeat this procedure for the bottom flange of the Yagi. Place the Yagi in the desired position, and tighten all four nuts with a wrench.
3. Attach the cable connector to the source connector and tighten finger tight (do not use tools; you may over tighten if they are used.)
4. Wrap the connectors with the sealant wrap for a water seal. Remove the paper backing from the rubber sheet and start wrapping 1/2 inch above the top connector. Stretch the rubber tight and continue wrapping to 1/2 inch below the bottom connector. Wrap the sealant wrap with electrical tape.



POLARIZATION CAN BE CHANGED AS FOLLOWS:

1. Using a 5/32" hex allen wrench, remove the four (4) cap screws from the base of the antenna and rotate the mounting. Re-install as shown above.
2. Remove the two (2) drain plugs from the holes on the bottom of the radome and re-install them in the drain holes on the side of the radome.

