

## Product Overview

- 8-pin X-Code M12 male and M12 female shielded field wireable connectors
- Fully shielded and suitable for up to Ethernet Category 6a applications
- Suitable for 22 AWG to 27 AWG, and 5.5 mm to 9 mm cable diameter

## Models

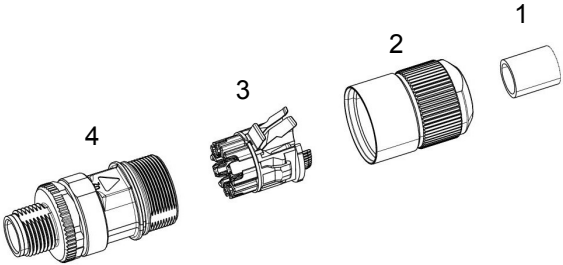
All measurements are listed in millimeters [inches], unless noted otherwise. The measurements provided are subject to change.

Model	Dimensions	Gender	Pinout	Wiring and Pinout Key
BFW-M12XF8-9X		Female		<div>1. White-orange</div> <div>2. Orange</div> <div>3. White-green</div> <div>4. Green</div> <div>5. White-brown</div> <div>6. Brown</div> <div>7. White-blue</div> <div>8. Blue</div> <div>Shield is on housing</div>
BFW-M12XM8-9X		Male		

## Features

Male shown - female is functionally identical

1. Additional sealing for cable: Ø 5.5 mm to 7.5 mm
2. Pre-mounted pressing screw
3. Wire manager
4. Insert



## Appropriate Applications and Limitations

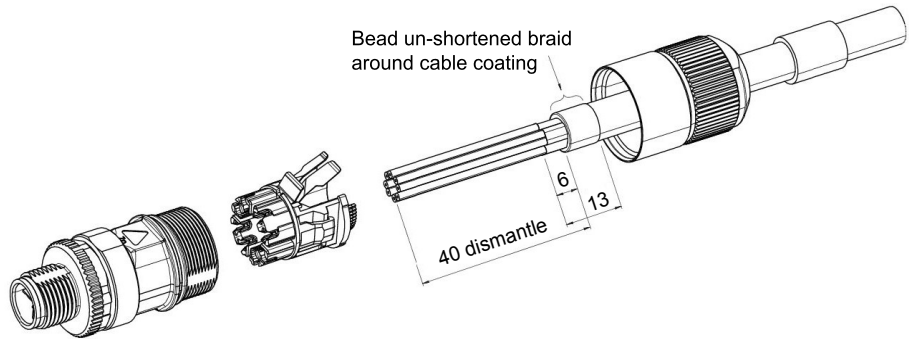
The connector must not be connected or disconnected under load. Non-observance and improper use can result in personal injury.

The connectors have been developed for applications in plant engineering, control, and electrical equipment construction. The user is responsible for checking whether the connectors can also be used in other areas of application.

# Assembly Instructions

All measurements are listed in millimeters, unless noted otherwise. The measurements provided are subject to change.

### Female Field Wireable Assembly



### Male Field Wireable Assembly

#### 1 Scope of Delivery

Cable sealing assembled for cable Ø > 7.7-9 mm



#### 2 Slide cable gland onto cable.

Select additional cable sealing according to cable Ø.



#### 3 Strip cable to min. 40 mm and fold braid shield backwards.



#### 4 Cable Ends

Cable End 1



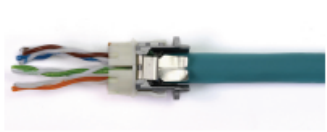
Cable End 2

#### 5 Insert pairs of wires into wire manager.

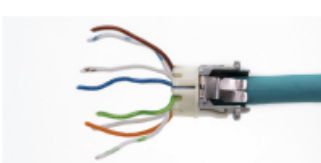


#### 6 Press down on shield cover.

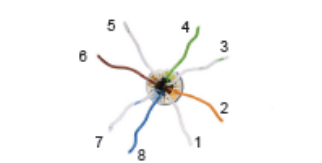
Braid shield must not protrude.



#### 7 Untwist pairs of wires.



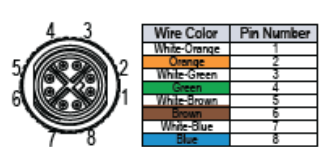
#### 8 Insert wires into wire manager.



#### 9 Cut wires flush, protruding max. 0.3 mm. Keep shield cross clear.



#### 10 Connection

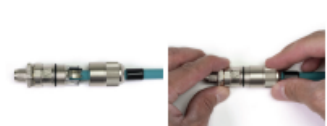


#### 11



#### 12 Locate wire manager.

Pay attention to position.



#### 13 Insert wire manager into plug body.

Locate cable gland.



#### 14 Slide flush in cable sealing flush.



#### 15 Tighten cable gland with spanner 17 AF and 15 AF ( approx. 5 Nm) until stop.



#### Finished

Male and female field wireable connectors are functionally identical.



## Specifications

---

### Supply Voltage

50 V AC / 60 V DC

### Supply Current

0.5 A

### Data Transmission Rate

Ethernet CAT6A

### Connections

Integral 8-pin X-Code M12 female quick-disconnect connector with shield clamping, or integral 8-pin X-Code M12 female quick-disconnect connector with shield clamping, depending on model

### Connector Locking System

Screw

### Termination

Insulation-displacement contact (IDC)

### Environmental Rating

IP67

### Construction

Housing material:

Female field wireable: Nickel-plated brass or nickel-plated die-cast zinc

Male field wireable: Nickel-plated die-cast zinc

Contact material:

Female field wireable: Brass

Male field wireable: Bronze

Contact body material: Polyamide nylon

Contact plating: Gold

Locking material: Nickel-plated die-cast zinc

### Connection Cross-Section

AWG 27-22

### Cable Outlet

5.5 mm to 9 mm

### Operating Temperature

−40 °C to +85 °C (−40 °F to +185 °F)

### Mechanical Operation

> 100 mating cycles

## Banner Engineering Corp Limited Warranty

---

Banner Engineering Corp. warrants its products to be free from defects in material and workmanship for one year following the date of shipment. Banner Engineering Corp. will repair or replace, free of charge, any product of its manufacture which, at the time it is returned to the factory, is found to have been defective during the warranty period. This warranty does not cover damage or liability for misuse, abuse, or the improper application or installation of the Banner product.

**THIS LIMITED WARRANTY IS EXCLUSIVE AND IN LIEU OF ALL OTHER WARRANTIES WHETHER EXPRESS OR IMPLIED (INCLUDING, WITHOUT LIMITATION, ANY WARRANTY OF MERCHANTABILITY OR FITNESS FOR A PARTICULAR PURPOSE), AND WHETHER ARISING UNDER COURSE OF PERFORMANCE, COURSE OF DEALING OR TRADE USAGE.**

This Warranty is exclusive and limited to repair or, at the discretion of Banner Engineering Corp., replacement. **IN NO EVENT SHALL BANNER ENGINEERING CORP. BE LIABLE TO BUYER OR ANY OTHER PERSON OR ENTITY FOR ANY EXTRA COSTS, EXPENSES, LOSSES, LOSS OF PROFITS, OR ANY INCIDENTAL, CONSEQUENTIAL OR SPECIAL DAMAGES RESULTING FROM ANY PRODUCT DEFECT OR FROM THE USE OR INABILITY TO USE THE PRODUCT, WHETHER ARISING IN CONTRACT OR WARRANTY, STATUTE, TORT, STRICT LIABILITY, NEGLIGENCE, OR OTHERWISE.**

Banner Engineering Corp. reserves the right to change, modify or improve the design of the product without assuming any obligations or liabilities relating to any product previously manufactured by Banner Engineering Corp. Any misuse, abuse, or improper application or installation of this product or use of the product for personal protection applications when the product is identified as not intended for such purposes will void the product warranty. Any modifications to this product without prior express approval by Banner Engineering Corp will void the product warranties. All specifications published in this document are subject to change; Banner reserves the right to modify product specifications or update documentation at any time. Specifications and product information in English supersede that which is provided in any other language. For the most recent version of any documentation, refer to:

[www.bannerengineering.com](http://www.bannerengineering.com).

For patent information, see [www.bannerengineering.com/patents](http://www.bannerengineering.com/patents).