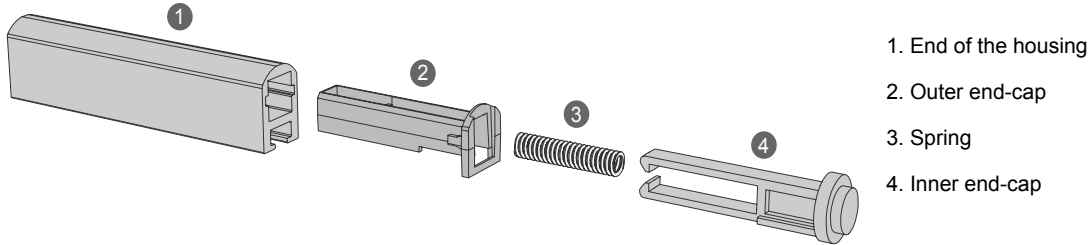


Rework the Spring End-Cap

Follow these steps to rework your spring end-cap assembly when the spring end-cap is missing or not working correctly.

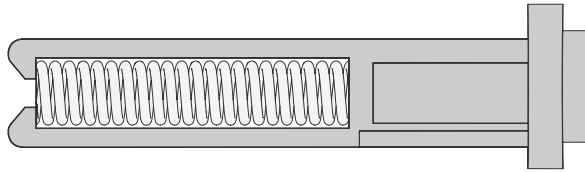
1. Remove all the spring end-cap components (items 2, 3, and 4) from the housing.

Exploded view of spring end-cap assembly and housing

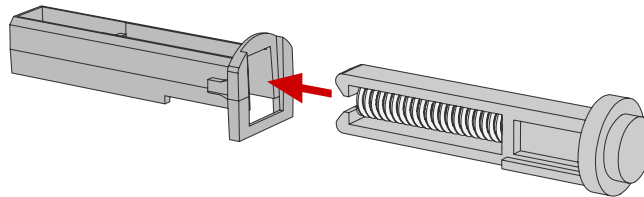


2. Assemble the replacement spring end-cap assembly as shown.

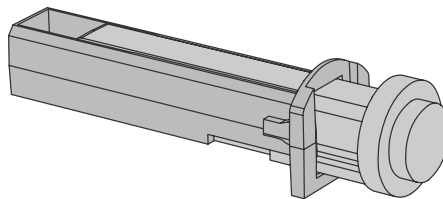
Insert the spring into the inner end-cap



Insert the inner end-cap with the spring into the outer end-cap

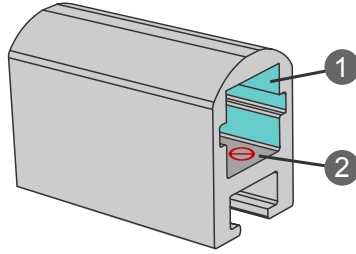


Complete spring end-cap assembly



3. Apply a small amount of adhesive to the two inner side surfaces (both sides) of the housing.

Carefully apply the adhesive



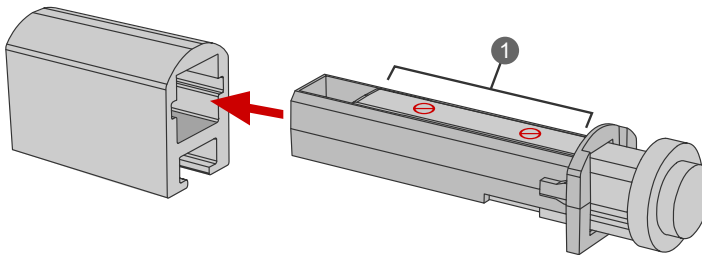
1. Apply a small amount of adhesive to the two surfaces (both sides) of the housing to retain the end-cap assembly inside the housing.

2. Do NOT get any adhesive on the top or bottom surfaces of the housing so that adhesive does not get between the inner and outer end-caps.

The adhesive will retain the end-cap assembly inside the housing. Banner uses two-part urethane. DO NOT apply any adhesive on the top and bottom surfaces of the housing. DO NOT allow any adhesive to get between the inner and outer end-caps.

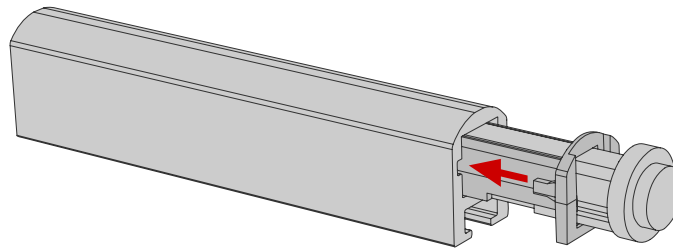
4. Reassemble the end-cap assembly into the housing.

Slide the end-cap assembly in the housing



1. Any adhesive on the end-cap assembly here could cause the spring to not work properly.

Slide the end-cap assembly into the housing



5. Verify that the spring end-cap moves freely in and out of the housing.

End-cap assembly fully assembled into the housing

