



Sensing • Detecting • Automation Expert

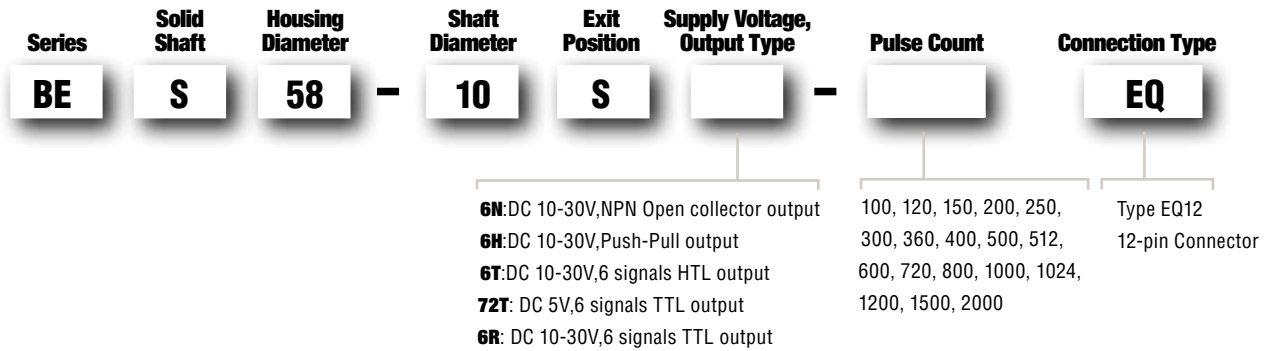
BES58-10 EQ Series Incremental Rotary Encoder

Housing Ø58 mm, solid shaft incremental rotary encoder

Features

- Industrial standard housing Ø58 mm, solid shaft Ø10 mm
- Up to 2000 P/R
- Wide Variation of Outputs:NPN, Push-pull, Line-driver
- Protection degree :IP54
- 12-pin Connector

Order Code

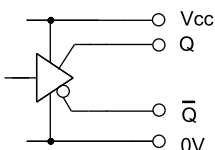


Electrical Specifications

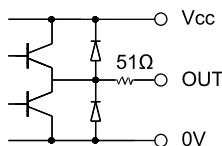
Pulse Count (ppr)	Max. 2000				
Type	6N	6H	6T	72T	6R
Output Type	NPN Open collector	Push-Pull	HTL	TTL	TTL
Supply Voltage	10-30Vdc	10-30Vdc	10-30Vdc	5Vdc	10-30Vdc
No-Load Supply Current	Max.80mA	Max.80mA	Max.150mA	Max.150mA	Max.150mA
Output Frequency	Max.100KHz	Max.100KHz	Max.100KHz	Max.100KHz	Max.100KHz
Rise Time	1 μs	1 μs	100ns	100ns	100ns
Operating Current	Max. per channel 30mA	Max. per channel 30mA	Max. per channel 20mA	Max. per channel 20mA	Max. per channel 20mA

Output Type

6T/72T/6R



6H



6N

