



## DK-ABR Barcode Reader (PN 806556)

Models	Description
1. ABR3009-WSU2	ABR Barcode Reader
2. MQDEC-1703SS-USB	USB Power/Configuration Cable
3.	USB Power Supply
4.	Bracket
5.	Mounting Arm
6.	Carrying Case
	Allen Wrench (for focus adjustment)
7. PN 208706	Barcode Test Chart
	PN 207636 Quick Start Guide
	PN 208394 Sell Sheet

## Factory Demo Setting

Out of the box, the ABR Barcode Reader is programmed to read DataMatrix codes. Use the following procedure to demonstrate the devices factory default capabilities.

1. Power the barcode reader on using the USB cable and AC power supply.
2. If required, reset the device to defaults by pressing and holding the button on the device during power up. Once all five LEDs flash simultaneously, release then press the button one more time. The reader beeps and after a few seconds enters Run mode with the front LEDs flashing.
3. Rotate the focus ring on the back of the device with the supplied hex key to the 70 Focus Position.
4. Mount the device approximately 70 mm (2.75 inches) above reading surface at a 10–15° angle.
5. Present the DataMatrix code from the ABR Barcode Test Chart in front of the device.

The ABR barcode reader can read DataMatrix codes right out of the box. The pass LED, green spot and beeper all indicate good reads. This compact device is robust, powerful and simple to setup.



# Simple Configuration Demo

Using the following procedure to teach an application specific code to the barcode reader using the Smart Teach button and indicators onboard the reader.

## Prepare the Reader

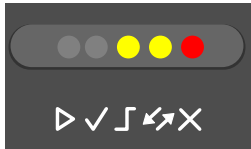
1. Power the barcode reader on using the USB cable and AC power supply.
2. Rotate the focus ring on the back of the device with the supplied hex key to the 70 Focus Position.
3. Mount the device approximately 70 mm (2.75 inches) above reading surface.

As a best practice, reset the device to defaults by pressing and holding the button on the device during power up. Once all five LEDs flash simultaneously, release then press the button one more time. The reader beeps and after a few seconds enters Run mode with the front LEDs flashing.

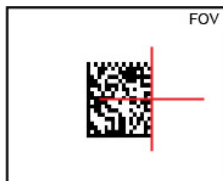
## Aim Mode

The reader includes a built-in aiming system to aid in reader positioning when users don't have access to a live image from the PC software.

1. Enter Focus/Aim mode by pressing and holding the button until the  LED is ON.




2. Release the button to enter Aim mode.
3. Place an application specific code in front of the reader, and position as shown below.





4. Once aligned, exit Aim mode by pressing the button once.

## Setup Mode

The reader automatically optimizes image acquisition settings for reliable code detection.

1. Enter Setup mode by pressing and holding the button until the  LED is ON.





2. Release the button to enter Setup mode. The  LED blinks. When complete, the  LED stops blinking, the ABR beeps once, and exits Setup mode.

## Learn Mode

The reader automatically learns a single code for detection.

1. Press and hold the button until the  LED is ON.




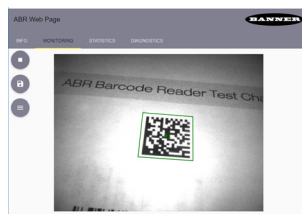
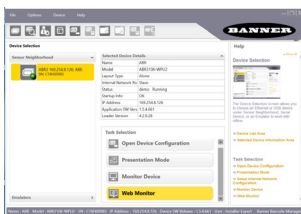
2. Release the button to enter Learn mode. The  LED blinks. Once complete, the  LED stops blinking, the reader saves decoding properties in memory, the Green Spot is activated, the ABR beeps once, and exits Learn mode.

## Run Mode

The device is now in Run mode and ready to read the taught code type. Present the taught code in front of the reader. The pass LED, green spot and beeper all indicate good reads.

# Optional Image Viewing Demo

1. Download Barcode Manager configuration software from [www.bannerengineering.com](http://www.bannerengineering.com)
2. Once installed, open Barcode Manager and verify your device is present in Sensor Neighborhood
3. Double-click on or drag the device icon into the Selected Device Information Area to select it
4. Click Web Monitor in the Task Selection and the ABR Web Page opens
5. Click on the Monitoring tab and press  to start viewing live images



See the quick start guide and product manual for information on how to configure the device using Barcode Manager PC software. Barcode Manager configuration gives full access to all the features of the device. Download today at [www.bannerengineering.com](http://www.bannerengineering.com).