



Q90R KD Discrete IO-Link Device Parameter Data Add-On Instruction Guide, v4

June 4th, 2024

This document covers the installation and use of an Add-On Instruction (AOI) for the Logix Designer software package from Rockwell Automation. This AOI handles acyclic IO-Link commands to and from a Q90R KD Discrete sensor. This AOI has eight User Defined Tag data types.

This IO-Link Device Parameter Data AOI is meant to be used alongside a v4 Banner IO-Link Master AOI.

Components

Banner_Q90R_KD_Param_v4_AOI.L5X

UDT's Packaged with the AOI

Banner_IOL_Port_v4
Banner_Q90RKD_BDC_v4
Banner_Q90RKD_Config_v4
Banner_Q90RKD_Direct_v4
Banner_Q90RKD_RD_v4
Banner_Q90RKD_Status_v4
Banner_Q90RKD_v4
Banner_Q90RKD_WD_v4

NOTE:

This Banner IO-Link Device Parameter AOI is useless on its own.

It is intended to be linked to a v4 Banner IO-Link Master AOI to function.

Other AOIs Available Separately

Banner has AOI files for controlling other Banner IO-Link devices and for a variety of IO-Link Masters. Banner also has AOI files for easily handling Banner device Process Data.

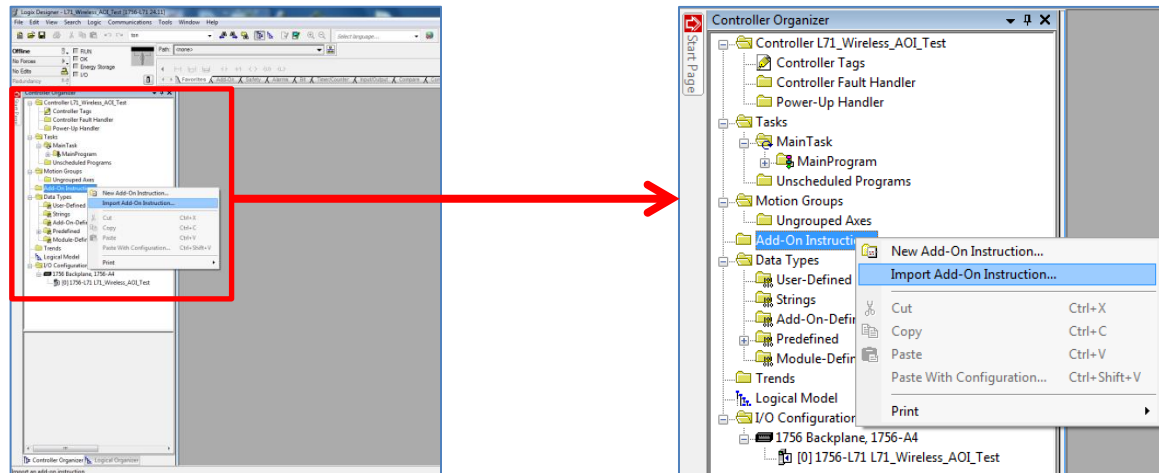
Contents

1.	Installation Process.....	1
2.	Configuring the AOI	3
3.	Linking the Device AOI to the Master AOI	5
4.	Using the Paired IO-Link Master and Device Parameter Data AOIs	6
Appendix A	Command Register	7
Appendix B	AOI Resets	8

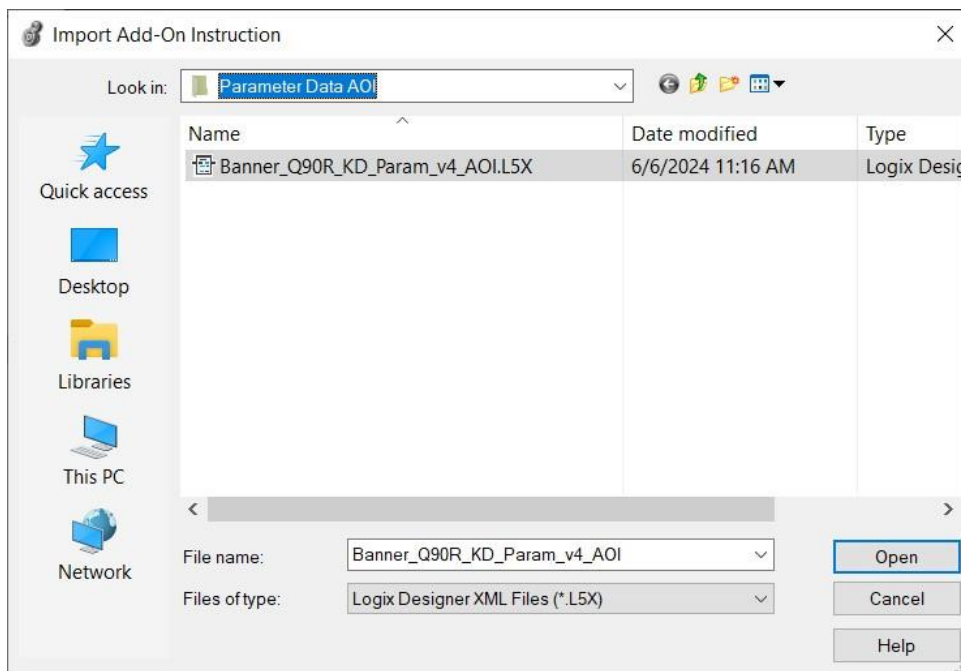
1. Installation Process

This section describes how to install the AOIs in Logix Designer software.

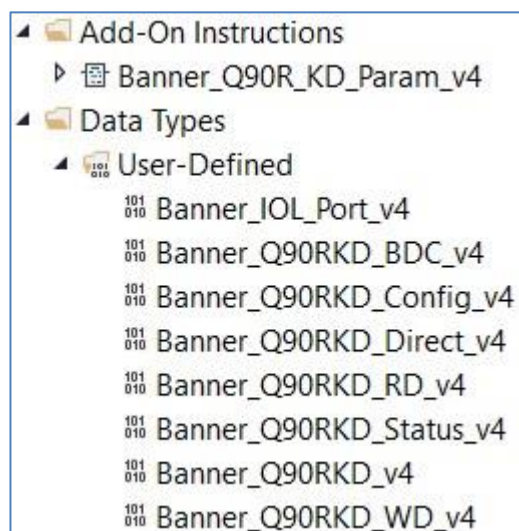
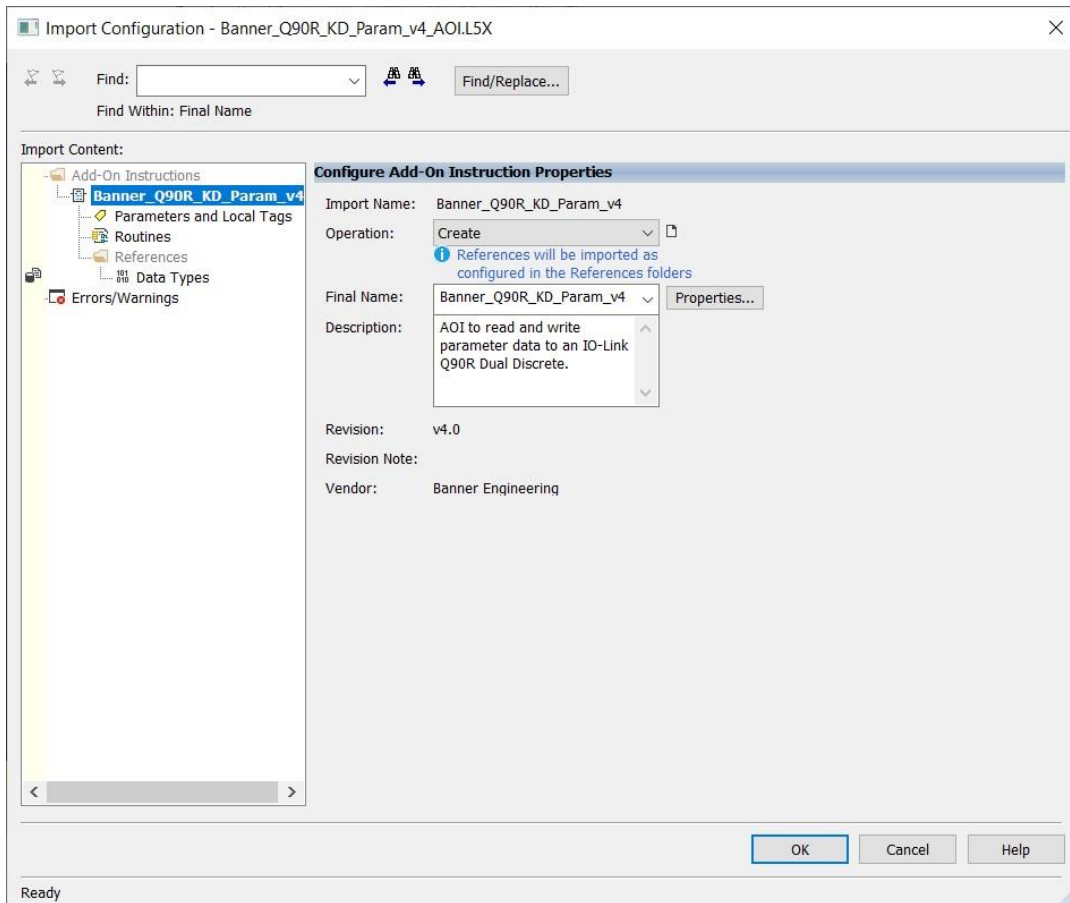
1. Open a project.
2. In the Controller Organizer window, right-click on the Add-On Instruction folder. Select the Import Add-On Instruction option.



3. Navigate to the correct file location and select the AOI to be installed. In this example the "Banner_Q90R_KD_Param_v4_AOI.L5X" file will be selected. Click the Open button.



- The Import Configuration window will pop up. The default selection will create all of the necessary items for the AOI. Click the OK button to complete the import process.

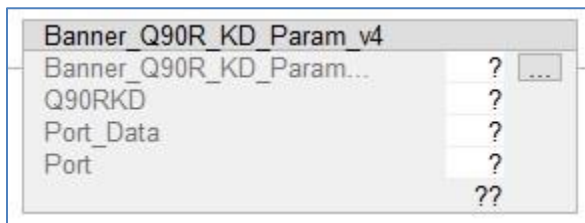


- The AOI is added to the Controller Organizer window and should look like the picture at left.
- AOI installation into the Logix Designer software complete.

2. Configuring the AOI

Make sure to add and configure a Banner IO-Link Master AOI to your program before adding a Banner IO-Link Device AOI.

1. Add the “Banner_Q90R_KD_Param_v4” AOI to your ladder logic program. For each of the question marks shown in the instruction we need to create and link a new tag array. The AOI includes new types of User Defined Tag (UDT): custom arrays of tags meant specifically for this AOI.



2. In the AOI, right-click on the question mark on the line labeled “Banner_Q90R_KD_Param_v4”. Click New Tag. In this example, we’ll use the name “Q90RKD_IOLM1_01_Status”. The example naming convention accounts for this being a Q90RKD sensor connected to IO-Link Master #1, port #1, in our program. More masters could be named IOLM2, IOLM3, and different sensors could be connected at other port numbers, etc.

The “EnableIn” and “EnableOut” variables are ladder logic rung status bits automatically added to all AOIs.

- Now click on the question mark on the line labeled “Q90RKD”. Click New Tag. In this example, we’ll use the name “Q90RKD_IOLM1_01”. This array of tags includes the port number to which the Q90RKD is connected and the Read and Write data blocks, made up of the information from the Q90RKD IO-Link Index and Subindex values.

New Tag

Name:

Description:

Usage:

Type:

Alias For:

Data Type:

Parameter Connection:

Scope:

External Access:

Style:

☐ Constant

☐ Sequencing

☐ Open Configuration

☐ Open Parameter Connections

3. Linking the Device AOI to the Master AOI

The third tag in the Q90RKD AOI is meant to be tied into the IO-Link Master AOI.

1. For the “Port_Data” line, choose the relevant IO-Link Master AOI’s “Port_Data” variable. In this example, we choose “IOLM1.Port_Data”.

Banner_Q90R_KD_Param_v4

Banner_Q90R_KD_Param... Q90RKD_IOLM1_01_Status ...

Q90RKD Q90RKD_IOLM1_01

Port_Data IOLM1.Port_Data

Port

Enter Name Filter...

Show: All Tags

Name	Data Type
IOLM1.Error_Write_Retry	BOOL
IOLM1.Num_Error_MSGS	DINT
IOLM1.IO_Link_Master_Busy	BOOL
IOLM1.AOI_Reset	BOOL
► IOLM1.Port_Data	Banner_IOL_Port_v4
IOLM1.Halt_Operation	BOOL
IOLM1.AOI_Halted	BOOL

2. For the last line of the Q90RKD AOI, “Port”, type in a number equal to the IO-Link Master port number to which the Q90RKD is connected. In this example, the Q90RKD is on port 1.

IOLM1.Port_Data.Port_Activate.1

Banner_Q90R_KD_Param_v4

Banner_Q90R_KD_Param... Q90RKD_IOLM1_01_Status ...

Q90RKD Q90RKD_IOLM1_01

Port_Data IOLM1.Port_Data

Port 1

3. The Q90RKD AOI is now linked to the IO-Link Master AOI. Add an Examine On instruction to the beginning of the ladder rung and tie it to the IO-Link Master AOI’s “Port Activate” bit corresponding to the port number to which the Q90RKD is connected. In this example the Q90RKD is on port 1 of the IO-Link Master named IOLM1, so the bit “IOLM1.Port_Data.Port_Activate.1” is used.

4. Using the Paired IO-Link Master and Device Parameter Data AOIs

The goal is to make the Banner device's IO-Link Index and Subindex values appear in PLC tag arrays as if it were an EtherNet/IP-speaking device. Reading from and writing to the Banner IO-Link device becomes as easy as changing tag values in the PLC. All the complicated work of translating from EtherNet/IP to IO-Link is handled automatically, behind the scenes.

When the program is downloaded to the PLC and the PLC goes into run mode, the IO-Link Master AOI performs a global read for each connected Banner device AOI..

There are two methods for acyclic reading of Banner device Index and Subindex values.

1. The initial global read, as requested by the IO-Link Master AOI after the PLC program is downloaded and run.
2. Manually via the "Command" variable found in every Device Parameter Data AOI. The "Command" register can be used to force one-time read or write actions, as described in Appendix A of any Banner Device Parameter AOI guide.

Acyclic writes to the IO-Link device are handled by simply changing the relevant tag values in the device's "Write_Data" tag array. After the tags are adjusted activate the write command for the IO-Link Index being adjusted. See Appendix A for all the write command values. The value is entered into the Command line. When Command is set back to 0 the operation has been completed.

▲ Q90RKD_IOLM1_01	{...}
Q90RKD_IOLM1_01.Initial_Global_Read	0
▶ Q90RKD_IOLM1_01.Command	0
▶ Q90RKD_IOLM1_01.Read	{...}
▶ Q90RKD_IOLM1_01.Write	{...}
▶ Q90RKD_IOLM1_01.Archive	{...}
Q90RKD_IOLM1_01.Reset	0

Appendix A Command Register

The “Command” register can be used to control the connected IO-Link device ‘by hand’. Placing the correct command numbers into this register is how the AOI achieves its automatic control.

▲ Q90RKD_IOLM1_01	{...}
Q90RKD_IOLM1_01.Initial_Global_Read	0
▶ Q90RKD_IOLM1_01.Command	0
▶ Q90RKD_IOLM1_01.Read	{...}
▶ Q90RKD_IOLM1_01.Write	{...}
▶ Q90RKD_IOLM1_01.Archive	{...}
Q90RKD_IOLM1_01.Reset	0

The table below shows the command numbers associated with the reading and writing of specific pieces of data. See the Q90RKD IODD file or the Q90RKD IO-Link Data Reference Guide for more information of the parameters.

Table 1: AOI Command Numbers

Q90RKD Parameter (IO-Link Index #)	Read Command	Write Command
Global Read (all)	1	
Direct Parameters (0)	2	
System Command (2)		42
Serial Number (21)	3	
Teach Selection (58)	4	43
Teach Status (59)	5	
SSC1 Setpoints (130)	6	44
SSC1 Configuration (128)	7	45
SSC2 Setpoints (131)	8	46
SSC2 Configuration (129)	9	47
Configuration (64)	10	48
SSC1 Vendor Specific Config (65)	11	49
SSC2 Vendor Specific Config (66)	12	50
Status (67)	13	
All Time Run Time (69)	14	
Resettable Run Time (70)	15	51
All Time Run Time Event (76)	17	52
Resettable Run Time Event (77)	18	53
Target Filters (78)	20	54
SSC1 Detection Area Config (132)	21	55
SSC2 Detection Area Config (133)	22	56
SSC1 Pulse Frequency Config (134)	23	57
SSC2 Pulse Frequency Config (135)	24	58
SSC1 Pulse Frequency Setpoints (136)	25	59
SSC2 Pulse Frequency Setpoints (137)	26	60

Appendix B AOI Resets

From time to time, a reset may be needed for an AOI, particularly if one of the read/write processes the AOI undertakes is interrupted. To this end, each Device Parameter Data AOI and IO-Link Master AOI has a reset bit.

Toggling this bit to a “1” causes the AOI to start over and try again.

▲ Q90RKD_IOLM1_01	{...}
Q90RKD_IOLM1_01.Initial_Global_Read	0
▶ Q90RKD_IOLM1_01.Command	0
▶ Q90RKD_IOLM1_01.Read	{...}
▶ Q90RKD_IOLM1_01.Write	{...}
▶ Q90RKD_IOLM1_01.Archive	{...}
Q90RKD_IOLM1_01.Reset	0

Best practices suggest adding a rung to your ladder logic program that resets all IO-Link Master and Device Parameter AOIs on the first scan. The example below shows one IO-Link Master, called IOLM1, and one connected Q90RKD having their respective AOIs being reset in this way.

