



## **DFG2/3 Process Data AOI Guide, v4**

### **September 20<sup>th</sup>, 2023**

This document covers the installation and use of an Add-On Instruction (AOI) for the Logix Designer software package from Rockwell Automation. This AOI handles cyclic IO-Link Process Data In from a Banner DF-G2/3 sensor via an IO-Link Master to an Allen-Bradley PLC. The AOI covers parsing and display of the DF-G2/3 sensor Process Data In. The AOI has one User Defined Tag data type.

#### **Components**

Banner\_DFG2\_DFG3\_PD\_v4\_AOI.L5X

#### **UDT Packaged with the AOI**

Banner\_DFG2\_DFG3\_PDI\_v4

#### **Other AOIs Available Separately**

Banner has AOI files for controlling other Banner IO-Link devices and for a variety of IO-Link Masters. Banner also has AOI files for easily handling Banner device Process Data.

**Contents**

1. Installation Process ..... 1

2. Configuring the IO-Link Master ..... 3

3. Configuring the AOI..... 4

4. Using the AOI..... 6

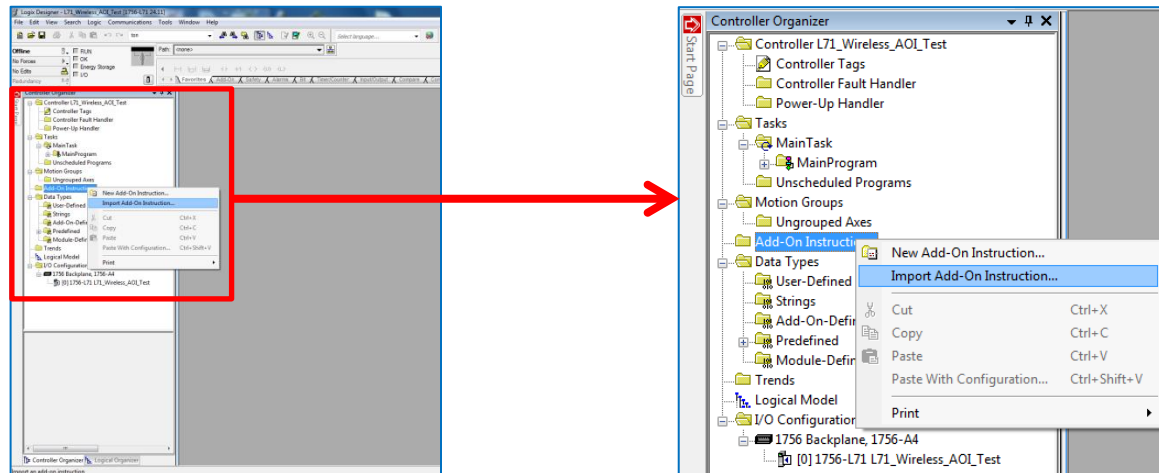
Appendix A DF-G2/3 Process Data ..... 7

Appendix B IO-Link Master Cheat Sheet ..... 8

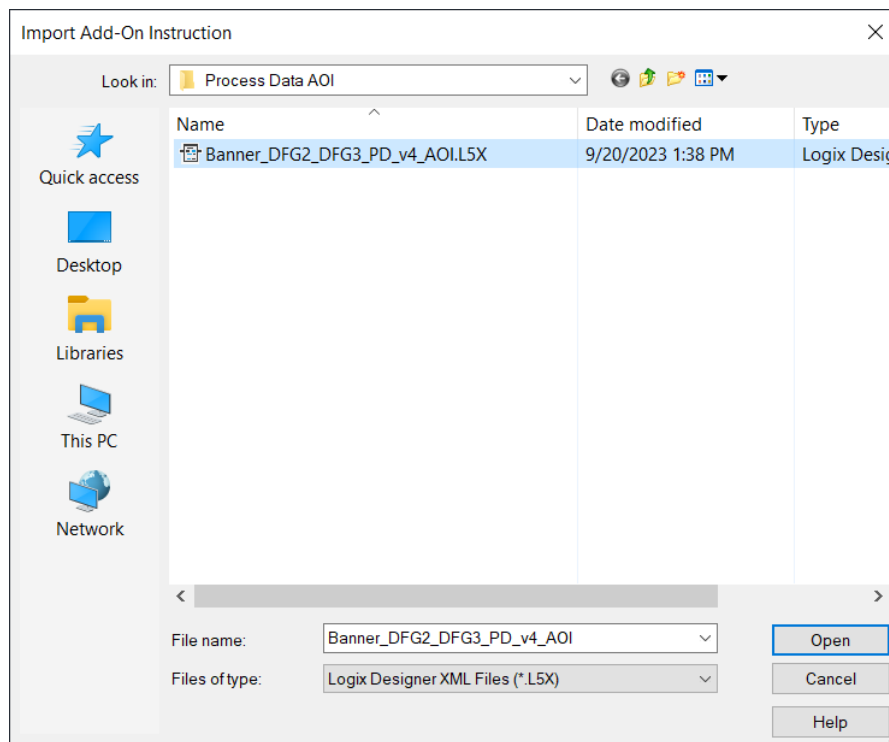
## 1. Installation Process

This section describes how to install the AOI in Logix Designer software.

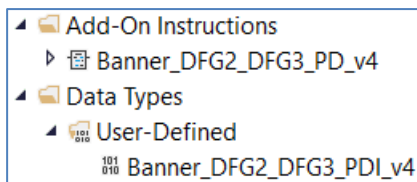
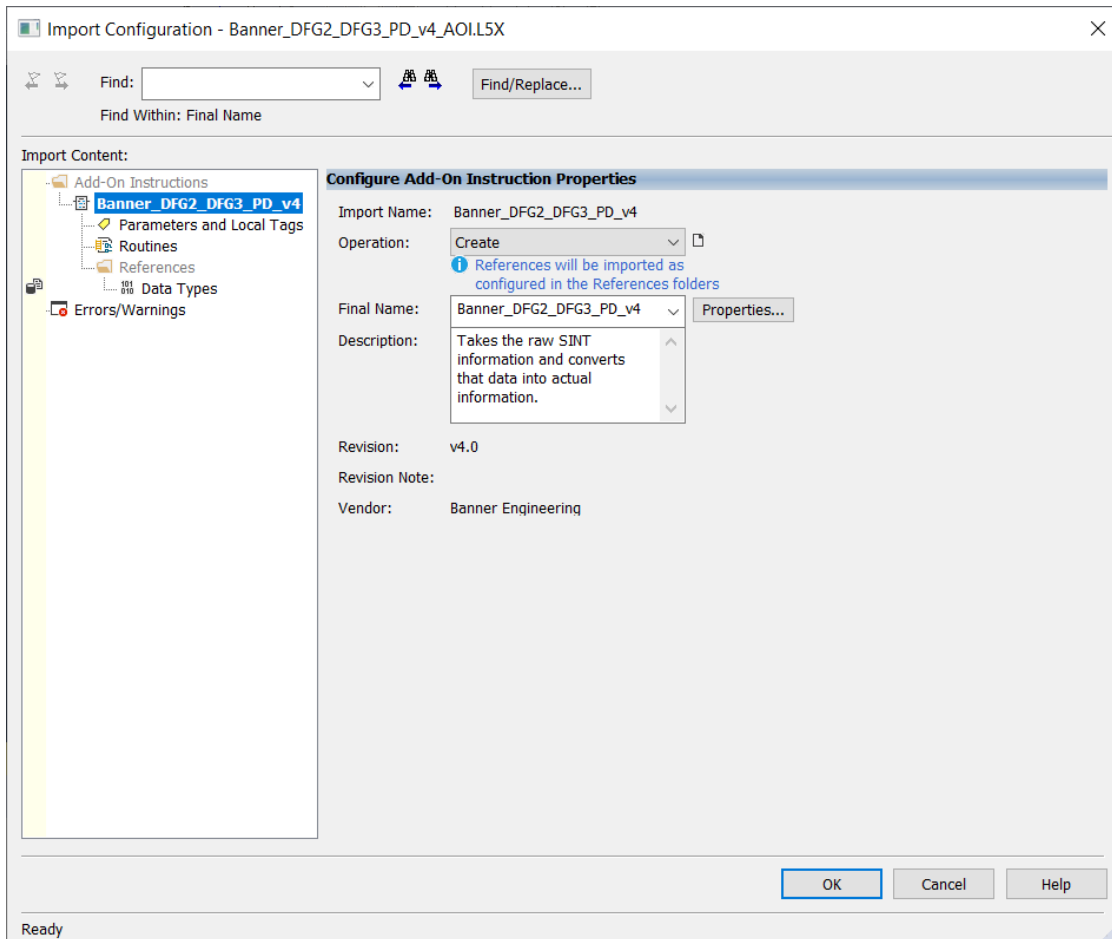
1. Open a project.
2. In the Controller Organizer window, right-click on the Add-On Instruction folder. Select the Import Add-On Instruction option.



3. Navigate to the correct file location and select the AOI to be installed. In this example the "Banner\_DFG2\_DFG3\_PD\_v4\_AOI.L5X" file will be selected. Click the Open button.



4. The Import Configuration window will pop up. The default selection will create all the necessary items for the AOI. Click the OK button to complete the import process.



5. The AOI is added to the Controller Organizer window and should look like the picture at left.
6. AOI installation into the Logix Designer software complete.

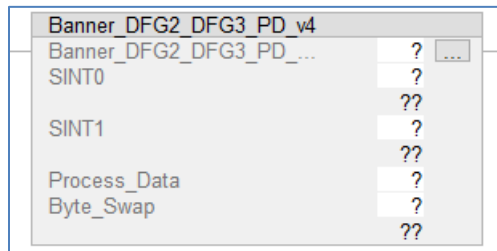
## **2. Configuring the IO-Link Master**

Make an EtherNet/IP connection to the IO-Link Master.

Create an Ethernet communications module for the IO-Link Master device. The controller tags generated include Input (I) and Output (O) Assembly Instances. Each Assembly has a corresponding tag array. Creating this Class 1 EtherNet/IP implicit IO connection will provide the PLC access to the IO-Link device Process Data. Each port on the IO-Link Master is given a dedicated group of I and O registers. See the relevant IO-Link Master User's Guide for more information.

### 3. Configuring the AOI

1. Add the “Banner\_DFG2\_DFG3\_PD\_v2” AOI to your ladder logic program. For each of the question marks shown in the instruction we need to create and link a new tag array. The AOI includes a new type of User Defined Tags (UDT): a custom array of tags meant specifically for this AOI.



2. In the AOI, right-click on the question mark on the line labeled “Banner\_DFG2\_DFG3\_PD\_v4”. Click New Tag. Name the new tag. This example uses the name “DFG23\_IOLM4\_1\_PD\_Status”. The example naming convention accounts for this being a DF-G2/3 sensor connected to IO-Link Master #4, port #1, in our program. More masters could be named IOLM1, IOLM2, and different sensors could be connected at other port numbers, etc.

Note that the Data Type is the User-Defined Data Type (UDT) entitled “Banner\_DFG2\_DFG3\_PD\_v2”. This custom-made array of registers is specially built to handle the memory needs of this AOI. Click Create to make the tag array.

New Tag

Name:

Description:

Usage:

Type:

Alias For:

Data Type:

Parameter Connection:

Scope:

External Access:

Style:

☐ Constant

☐ Sequencing

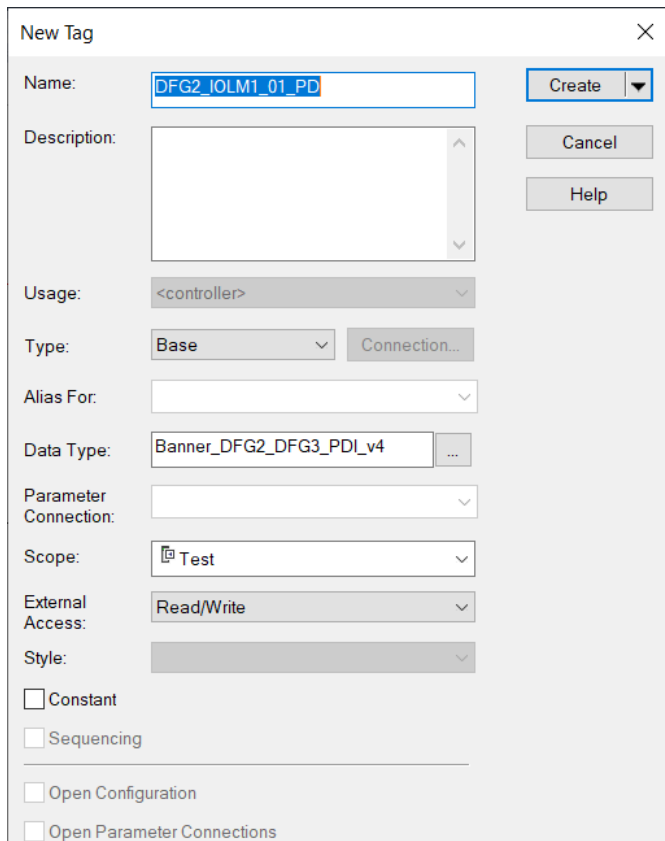
☐ Open Configuration

☐ Open Parameter Connections

- Next, we will link the lines in the AOI labeled “SINT0” and “SINT1” with the group of registers the IO-Link Master has reserved for the DF-G2/3 in question. These registers are the raw Process Data that this AOI will separate out into component pieces. In this case, the DF-G2/3 is connected to port 1. According to the documentation for the particular IO-Link Master used in this example, the Process Data In for a device connected to port 1 starts at byte 6 in the IO-Link Master’s T->O (PLC Input/IO-Link Master Output) Assembly Instance.

See the relevant IO-Link Master documentation or Appendix B for more information on which registers contain the raw Process Data you need.

- Now we will right-click on the question mark on the line labeled “Process\_Data” in the AOI. Click on “New Tag”. Give the tag a name. This example uses the name “DFG23\_IOLM1\_01\_PD”. Notice that the Data Type is “Banner\_DFG2\_DFG3\_PDI\_v4”. Click Create.



- The last line in the AOI is a setting to account for byte swapping. In the case of the DF-G2/3, the Process Data is two bytes long. IO-Link Masters may read those two bytes in either order, so this AOI has to be ready to perform a byte swap. Enter a “0” or a “1” to toggle this setting. See Appendix B for more information.

The “Banner\_DFG2\_DFG3\_PD\_v4” AOI is now ready for use.

## 4. Using the AOI

The “Banner\_DFG2\_DFG3\_PD\_v2” Add-On Instruction has created a group of tags representing the DF-G2/3 Process Data, broken out into its component parts.

Look in the Controller Tags to find the name you used in Step 4 above. This example used the name “DFG23\_IOLM4\_1\_PD”. The tag array, seen below, has individual pieces of information instead of 16 unlabeled bits.

▲ DFG2_IOLM1_01_PD	{...}
▶ DFG2_IOLM1_01_PD.BDC1_Output_State	1
▶ DFG2_IOLM1_01_PD.BDC2_Output_State	0
▶ DFG2_IOLM1_01_PD.Measurement_Value	331



## Appendix A DF-G2/3 Process Data

The DF-G2 and DF-G3 both have 2 bytes of Process Data In, as shown below.

ProcessDataIn "Process Data In" id=PD_ProcessDataIn									
bit length: 16									
data type: 16-bit Record (subindex access not supported)									
subindex	bit offset	data type	allowed values	default value	acc. restr.	mod. other var.	excl. from DS	name	description
1	0	Boolean	false = Inactive, true = Active					BDC1 Output State (Q)	State of the discrete output
2	1	Boolean	false = Inactive, true = Active					BDC2 Output State (Q)	State of the discrete output
3	2	14-bit UInteger						Measurement	
Octet 0									
bit offset	15	14	13	12	11	10	9	8	
subindex	3								
element bit	13	12	11	10	9	8	7	6	
Octet 1									
bit offset	7	6	5	4	3	2	1	0	
subindex	3						2	1	
element bit	5	4	3	2	1	0			

This Process Data is mapped to a specific group of EtherNet/IP registers. The 16-bits of Process Data encode three separate pieces of information. Bit 0 is the state of BDC1 (Binary Data Channel 1, also known simply as Output Channel 1). Bit 1 is BDC2 (Channel 2). The remaining 14 bits are used to communicate the DFG Measurement value.

This AOI intelligently parses this Process Data into its component pieces.

## Appendix B IO-Link Master Cheat Sheet

Different IO-Link Masters behave differently in several ways. For one, the register locations where Process Data is stored varies. For another, some IO-Link Masters require byte-swapping and/or word-swapping. The tables below aim to define some of these differences. Note that these numbers are when using all default settings. IO-Link Masters can change the register locations to which Process Data is mapped in response to non-default, optional settings. See relevant IO-Link Master documentation for more information.

PDI (Process Data In) is found in the IO-Link Master's T->O (PLC "Input") Assembly Instance.

PDO (Process Data Out) is found in the IO-Link Master's O->T (PLC "Output") Assembly Instance.

**Table 1. First Register of Process Data "SINT0"**

Port	Allen-Bradley*		Comtrol		Balluff		Turck		ifm		Banner	
	PDI	PDO	PDI	PDO	PDI	PDO	PDI	PDO	PDI	PDO	PDI	PDO
1	I.Ch0Data[0]	O.Ch0Data[0]	4	0	8	6	6	4	190	46	184	182
2	I.Ch1Data[0]	O.Ch1Data[0]	40	32	56	38	38	36	222	78	218	216
3	I.Ch2Data[0]	O.Ch2Data[0]	76	64	104	70	70	68	254	110	252	250
4	I.Ch3Data[0]	O.Ch3Data[0]	112	96	152	102	102	100	286	142	286	284
5	I.Ch4Data[0]	O.Ch4Data[0]	148	128	200	134	134	132	318	174	320	318
6	I.Ch5Data[0]	O.Ch5Data[0]	184	160	248	166	166	164	350	206	354	352
7	I.Ch6Data[0]	O.Ch6Data[0]	220	192	296	198	198	196	382	238	388	386
8	I.Ch7Data[0]	O.Ch7Data[0]	256	224	344	230	230	228	414	270	422	420

\*see relevant Banner Allen-Bradley IO-Link Master AOI Guide and Allen-Bradley User Guides for more information on using device IODD files to aid in integration.

Note: Murr IO-Link Masters have configurable process data. Refer to the Murr IO-Link Master Instruction Manual for Process Data mappings.

**Table 2. Byte-Swap**

IO-Link Master	Byte Swap
Allen-Bradley	0
Comtrol	1
Balluff	0
Turck	1
ifm	1
Murr	0
Banner	0

Specific hardware used in both tables (all default settings):

- Allen-Bradley Armor Block I/O IO-Link Master (1732E-8IOLM12R)
- Comtrol 8-EIP IO-Link Master (99608-8)
- Balluff BNI006A (BNI EIP-508-105-Z015)
- Turck TBEN-L5-8IOL
- ifm AL1122
- Murr Impact67 E DIO 12 DIO4/IOL4 4P (Art.-No. 55144)

Banner IO-Link Masters (DXMR90-4K) have a port status register. The register gives the status of the port. It gives information on if the port has an IO-Link device connected and if Process Data is valid. This is optional information but is useful for troubleshooting. The data comes into the PLC as bytes while the literature shows the value as a word. The table below gives the upper- and lower-byte data location in the PLC. The upper byte includes bits 15 through 8, while the lower byte has bits 7 through 0.

IO-Link Master Port	Upper Bits 15 - 8	Lower Bits 7 - 0
1	182	183
2	216	217
3	250	251
4	284	285
5	318	319
6	352	353
7	386	387
8	420	421

#### Port Status:

**Bit0** = Connected?

**Bit1** = Process Data Valid?

**Bit2** = Event Pending?

**Bit3** = Ready for ISDU?

**Bit4** = Pin4 SIO State

**Bit5** = Pin2 SIO State

#### **Bit6-7 = Pin4 Mode:**

SDCI Mode = 0

SIO Input Mode = 1

SIO Output Mode = 2

#### **Bit8-10 = Pin2 Mode:**

Disabled = 0

Input Normal = 1

Output = 2

Diagnostic Input = 3

Inverted Input = 4