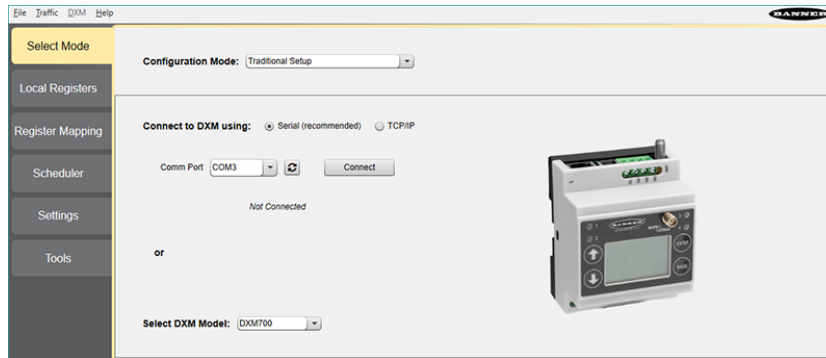


Pushing to an Amazon Web Services (AWS) IoT Endpoint

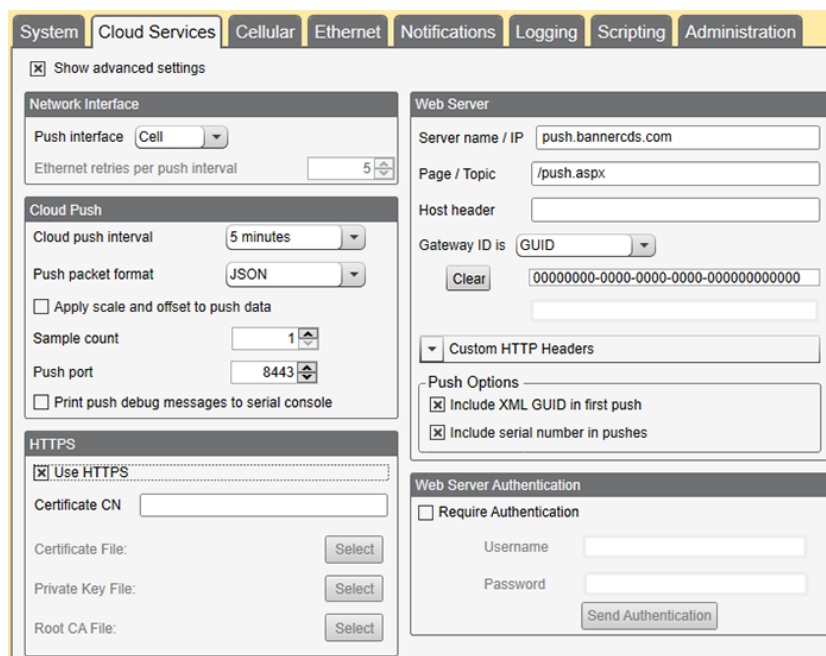


Push Data to an Amazon Web Services (AWS) Endpoint

1. Apply power to your DXM700 and connect it to your computer using a USB adapter cable.
2. Launch the DXM Configuration Software v4.
3. From the **Configuration Mode** drop-down list, select **Traditional Setup**.
4. Select the appropriate **Comm Port** from the drop-down list, then click **Connect**.



5. Go to the **Settings > Cloud Services** screen.
6. Click **Show advanced settings**.
All parameters display on the screen.
7. In the **Network Interface** section, select the desired **Push interface**.
 - If you select **Cell**, the **Cellular** screen becomes available, next to the **Cloud Services** tab. Verify that the Cell module and APN settings on the **Cellular** screen are correct, then return to the **Cloud Settings** screen.
8. In the **Cloud Push** section, select the desired **Cloud push interval**.
The DXM700's maximum push rate is once per minute (available via Ethernet only). At this rate, the DXM pushes a maximum of 13 packets per second, with a maximum packet size of 1500 bytes.
9. Set the **Push packet format** to JSON.
10. In the **Web Server** section, enter the **Server name** of your AWS IoT endpoint.
The server name can be found on AWS's Interact page for the IoT Thing you'd like to push data to.
11. Enter your IoT Topic name in the **Page / Topic** field (e.g. /things/ExampleThing/shadow/update). Note that the topic length may not exceed 256 characters and may contain at most seven / (forward slash) characters.
12. In the **HTTPS** section, select **Use HTTPS**.



13. The DXM700 uses an X.509 certificate for authentication with the HTTPS client. Using the three **Select** buttons in the **HTTPS** section, browse to each of the three certificates necessary to push to AWS IoT.

HTTPS

Use HTTPS

Certificate CN:

Certificate File: *252900c621.cert.pem*

Private Key File:

Root CA File:

Selecting a file uploads it to the DXM700. After a successful upload, the name of the uploaded file displays in italics as shown.

14. Send the configuration file to the DXM.
 - a) Go to the **DXM > Send XML Configuration to DXM** menu.
 - b) Select the currently loaded file to send it to the DXM.

The DXM reboots after the configuration has been successfully sent and begins pushing to the IoT endpoint using Ethernet.