

Sensing | Detecting | Automation Expert

# THM Series HMI



Sensing • Detecting • Automation Expert



# Friendly | Rapid | Open | Flexible

## The introduction of BANNER ENGINEERING

BANNER ENGINEERING is a global leading sensing detecting and automation solution supplier, who has more than 22,000 types of products and the most complete product lines, including industrial controllers (PLC & HMI), photoelectric sensors, measuring and detecting sensors, industrial wireless network products, machine vision, industrial safety products, industrial intelligent indicators, rotary encoders and other automation products that can meet different control & detection demands. In the past 4 decades of development, Banner has been taking innovation as the driving force of application and R&D of products. In terms of either factory automation or process automation, Banner can provide leading and reliable control & detection solutions.



## The introduction of THM series HMI

THM has excellent performance, elegant outlook and complete product series. It adopts advanced embedded technology, efficient real-time operation system, and simple used operation software. Besides basic functions of monitor, operation and storing data, it also supports major brands of controllers, PLC, inverter and other equipment communication. In various fields of Factory Automation and Process Automation, it has widely application. THM series HMI has eight inches, which are 3.5".4.3".5.6".7".8".10.4".12.1",15".

The main stream adopts 60000 colors TFT displays, from the basic type only with the serial port, to the type integrating various serial ports, various USB interfaces, Ethernet interface, audio interface, and SD card slot of Multi function type. It has various types to realize different users under needs of different application scenes.

### Friendly software

BAMS software is integrated the advantages of the major brand globally, which is easy to operate and has abundant function. The well-designed windows and the smooth animation will make you satisfied.

### Rapid Response

THM adopts advanced embedded technology, low-power 32-bit RISC CPU chip, and advanced 2D graphics accelerator. High efficient built-in real-time operation system, lights when it powers on instantaneously, communicating with the controller rapidly. THM will finish its communication instantaneously and would not delay when it communicates with IPC & PLC.



### Strong Communication

Integrating various serial ports (at most 3 pcs), supporting three sorts of communication styles, which are RS232/RS485/RS422, and able to communicate with controllers of different communication protocol simultaneously. Integrated Ethernet interface: Realizing the remote monitor on HMI by Ethernet, and the data exchange between HMI and controller, each PC, and each HMI.

Integrated USB interface: Uploading and downloading program, and storing data by USB interface. Also able to connect with other equipments of USB interface, such as Mouse, keyboard and printer. Flexible expansion & wealth of function.

### Cool Vision Effect

Adopting 65536 colors, True color TFT LCD screen, which is bright and colourful. It supports picture formats like BMP, JPG and GIF for individualized demonstration.

### High reliability

All series of products have certification of CE, FCC, etc, which are consistent with international standards. They have advanced anti jamming performance to the environment like electromagnetic wave, static electricity, humidity, and high and low temperature. Moreover, they have various protection functions, like power reverse connection, short circuit protection, surge protection, and communication protection.

Product specifications & Amendment commitment

All specifications and parameters may be amended. Banner Engineering reserves the right of amending above without notice.



Sensing • Detecting • Automation Expert

# Strong | Stable | Reliable | Safe



## Overview of THM hardware



### Audio interface (partial models)

For playing language file, and outputting language message



### Power interface

DC20 ~ 28V



### Ethernet interface

Realizing the remote monitor to HMI by Ethernet, and the data exchange between HMI and controller, each PC, and each HMI.



### USB interface

Uploading & downloading program, and storing data by USB interface. Also able to connect with other equipments of USB interface, such as mouse, keyboard & printer.



### Serial port

Supporting RS232/422/485



### SD card

Able to insert SD card, for program upload & download and data storage.

## Overview of BAMS software

- **BAMS software is simple to learn & use.**

- **Large volume of the gallery**

- ※ Supporting the format of BMP, JPG, and GIF; Supporting full color display, and meanwhile, the software integrates rich gallery for random options.

- ※ The software has over 4000 graphics originals for users' making images of various effect.

- **Multi languages transformation**

Supporting all fonts of Windows system; Adopting Unicode system, and supporting multi languages online transformation, which at most reaches to 10 sorts of languages.

- **Simulation function**

In BAMS software, simulating HMI & PLC could be operated by online or offline patterns, to simulate debugging of image and operation.

- ※ Offline simulation. Without HMI & PLC, directly simulating the computer as one HMI & PLC, for users' conveniently learning software and design the image.

- ※ Online simulation, directly regarding the computer as one HMI & PLC to communicate and exchange data. The effect is the same as online operation of HMI & PLC.

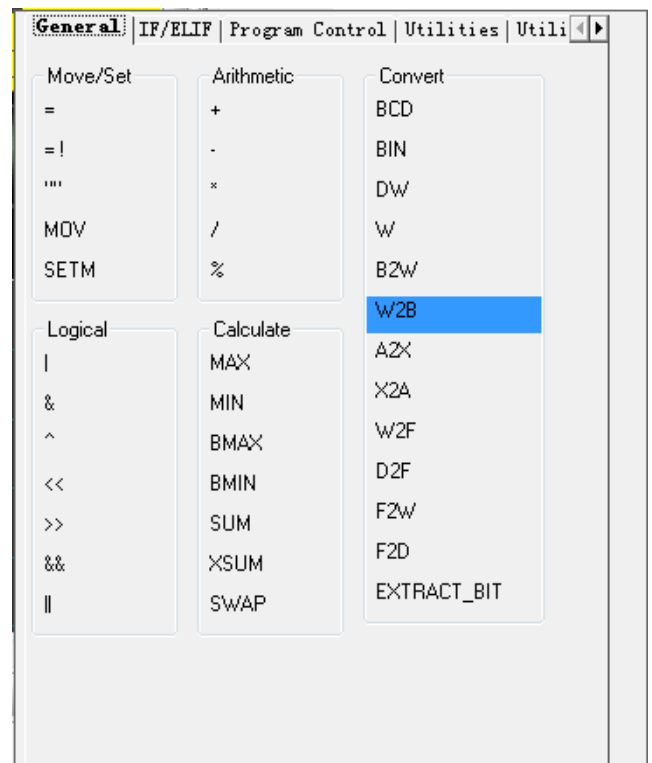
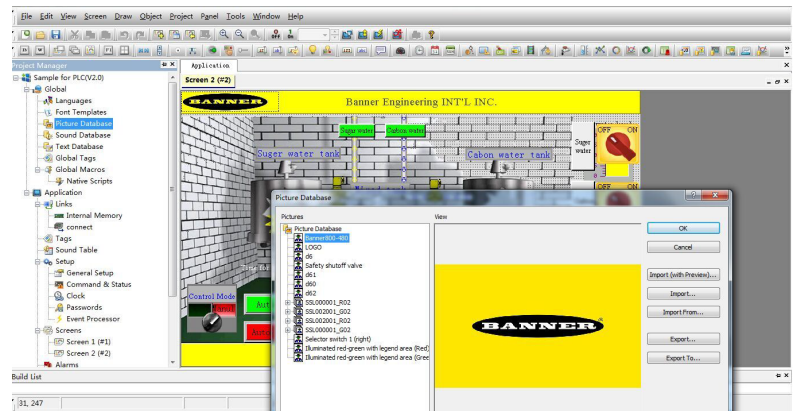
- **Strong MACRO Editor**

Supporting MACRO script. The MACRO The MACRO instruction is rich for users' freely writing program to realize the necessary functions.

- ※ Various MACRO instruction for flexible use

- ※ MACRO instruction Pattern of Various controlling methods for options

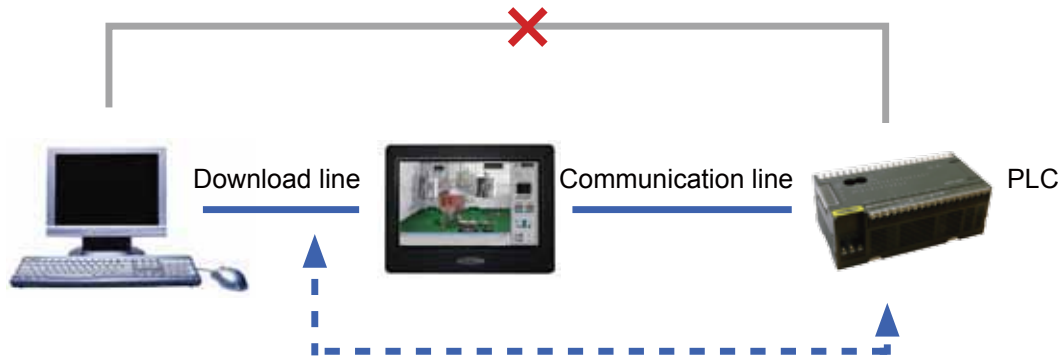
- ※ The program can be inputted various MACRO instruction





• **Transparent communication**

PC communicates through THM & PLC, which makes the debugging of PLC more convenient. When the communication style is RS422/485, the specialized PLC communication cable can be replaced. PC can directly online amend and monitor PLC system by THM without the specialized PLC communication cable.



• **Strong opening**

THM supports various communication interfaces for convenient flexible networkings as follows

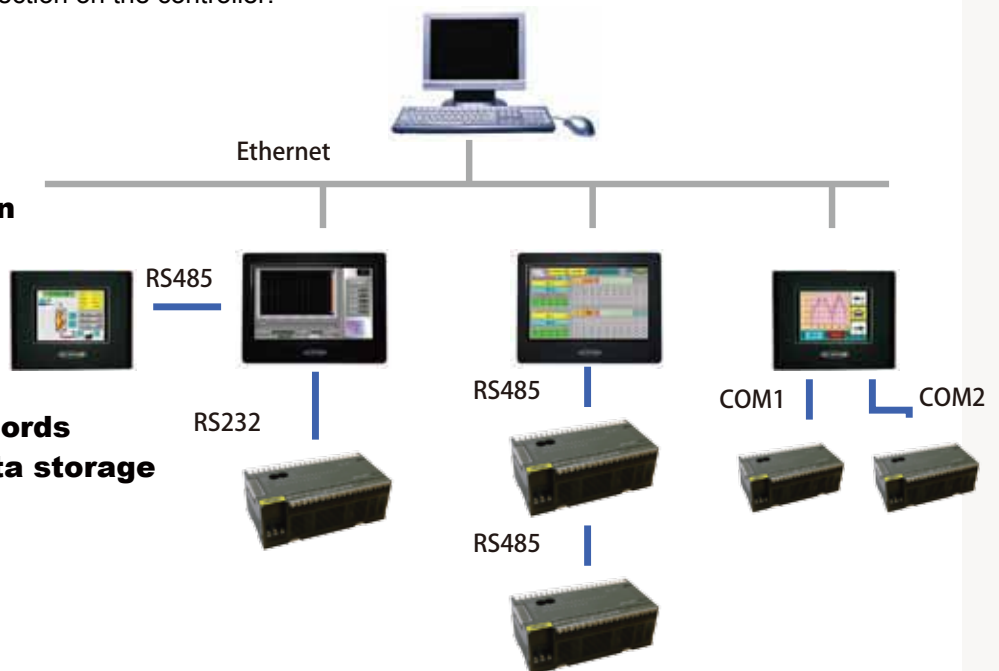
1. One HMI connecting one PLC (1:1) or the two serials of one HMI individually connecting two different controllers (2:2)
2. One serial (RS485) of one HMI connecting various controllers(1:n)
3. Various HMI (RS485) connecting one controller (n:1)
4. One HMI connecting various controllers by Ethernet.
5. One HMI connecting PC by Ethernet; Connecting the controller by serial ports, which makes PC realize the data collection on the controller.

• **Supporting 8 level code protection**

• **Rich alarm function**

• **Supporting recipe function of various zones & groups.**

• **Historical data records displaying, and data storage of various zones**







Model		THM035B	THM043A	THM043C2	THM056A	THM070A	THM070AE	THM070C2	
<b>Specification</b>	<b>Size</b>	3.5"	4.3"	4.3"	5.6"	7.0"	7.0"	7.0"	
	<b>Display</b>	256 colors TFT, LED backlight	65536 colors TFT, LED backlight						
	<b>Resolution</b>	320×240	480×272	480×272	320×234	800×480	800×480	800×480	
	<b>Lightness(cd/m2)</b>	300	400	250	250	300	300	280	
	<b>Touch panel</b>								
	<b>CPU</b>	32-bit RISC							
	<b>Memory(SDRAM)</b>	512KB	32MB	32MB	32MB	64MB	64MB	32MB	
	<b>Battery backup memory</b>	None	128KB (1MB optional)	128KB	128KB (1MB optional)	128KB (1MB optional)	128KB (1MB optional)	128KB	
	<b>Flash Memory</b>	2MB	8MB	8MB	8MB	8MB	128+8MB	128+8MB	
<b>Communication interface</b>	<b>SD</b>	None	None	None	None	None	Max. 16GB	None	
	<b>USB</b>	None	1 Master & 1 Slave						
	<b>Serial</b>	COM1 : RS232 COM2 : RS422/485	COM1 : RS232/422/485 COM2 : RS232/485 COM3 : RS232	COM1 : RS232/422/485 COM2 : None COM3 : RS232	COM1 : RS232/422/485 COM2 : RS232/485 COM3 : RS232	COM1 : RS232/422/485 COM2 : RS232/485 COM3 : RS232	COM1 : RS232/422/485 COM2 : RS232/485 COM3 : RS232	COM1 : RS232/422/485 COM2 : None COM3 : RS232	
	<b>Ethernet</b>	None	None	None	None	None	Yes	None	
	<b>Audio</b>	None	Optional	Optional	Optional	Optional	Optional	Optional	
<b>Electricity characteristics</b>	<b>Watt</b>	6W	13W	13W	13W	15W	15W	15W	
	<b>Power</b>	DC20V ~ 28V	DC20V ~ 28V	24VDC±10%	DC20V ~ 28V	DC20V ~ 28V	DC20V ~ 28V	24VDC±10%	
<b>Conditions</b>	<b>Operation temperature</b>	0°C ~ 50°C							
	<b>Operation humidity</b>	10%~90% RH, No condensation							
	<b>Vibration resistance</b>	10Hz ~ 55Hz(X,Y,Z direction 1G/30 minutes)							
<b>Certifications</b>	<b>IP Class</b>	IP65(Front panel)							
	<b>CE</b>	EN550 22 , EN61000-4-2 , EN61000-6-4 , EN61000-4-8							
<b>Physical specification</b>	<b>Dimensions (mm)</b>	130.0×106.2×39.0	130.0×106.2×39.0	130.0×106.2×39.0	188.0×143.3×40.0	188.0×143.3×40.0	188.0×143.3×40.0	204.4×151.0×40.0	
	<b>Cutout dimensions (mm)</b>	118.5×92.5	118.5×92.5	118.5×92.5	174.5×132.5	174.5×132.5	174.5×132.5	191.5×138.0	
	<b>Weight</b>	0.27kg	0.35kg	0.35kg	0.59kg	0.6kg	0.6kg	0.6kg	



THM070CE	THM080A	THM080AE	THM101C2	THM101CE	THM104A	THM104AE	THM121CE	THM150AE
7.0"	8"	8"	10.1"	10.1"	10.4"	10.4"	12.1"	15"
65536 colors TFT, LED backlight								
800×480	800×600	800×600	1024×600	1024×600	800×600	800×600	800×600	1024×768
350	300	300	200	300	400	400	450	400
Resistor; Surface hardness 4H								
32-bit RISC								
32MB	64MB	64MB	32MB	32MB	64MB	64MB	64MB	64MB
128KB	128KB (1MB optional)	128KB (1MB optional)	128KB	128KB	128KB (1MB optional)	128KB (1MB optional)	128KB (1MB optional)	128KB (1MB optional)
128+8MB	8MB	128+8MB	128+8MB	128+8MB	8MB	128+8MB	128+8MB	128+8MB
None	None	Max. 16GB	None	None	None	Max. 16GB	Max. 16GB	Max. 16GB
1 Master & 1 Slave								
COM1 : RS232/422/485 COM2 : None COM3 : RS232	COM1 : RS232/422/485 COM2 : RS232/485 COM3 : RS232	COM1 : RS232/422/485 COM2 : RS232/485 COM3 : RS232	COM1 : RS232/422/485 COM2 : None COM3 : RS232	COM1 : RS232/422/485 COM2 : None COM3 : RS232	COM1 : RS232/422/485 COM2 : RS232/485 COM3 : RS232	COM1 : RS232/422/485 COM2 : RS232/485 COM3 : RS232	COM1 : RS232/422/485 COM2 : None COM3 : RS232	COM1 : RS232/422/485 COM2 : RS232/485 COM3 : RS232
Yes	None	Yes	None	Yes	None	Yes	Yes	Yes
Optional	Optional	Optional	Optional	Optional	Optional	Optional	Optional	Optional
	20W	20W	20W	20W	20W	20W	18W	25W
	DC20V ~ 28V	DC20V ~ 28V	24VDC±10%	24VDC±10%	DC20V ~ 28V	DC20V ~ 28V	DC20V ~ 28V	DC20V ~ 28V
0°C ~ 50°C								
10%~90% RH, No condensation								
10Hz ~ 55Hz(X,Y,Z direction 1G/30 minutes)								
IP65(Front panel)								
EN550 22, EN61000-4-2, EN61000-6-4, EN61000-4-8								
204.4×151.0×40.0	231.6×174.6×42.5	231.6×174.6×42.5	270.1×212.1×42.5	270.1×212.1×42.5	270.1×212.1×42.5	270.1×212.1×42.5	330.35×245.88	399.1×297.6×62.6
191.5×138.0	220.5×163.5	220.5×163.5	259.0×201.0	259.0×201.0	259.0×201.0	259.0×201.0	301.5×228.0	384.5×283.0
0.6kg	0.93kg	0.93kg	1.2kg	1.2kg	1.2kg	1.2kg	2.2kg	2.8kg

# Sensing | Detecting | Automation Expert

Model	Description
THM035B	3.5" TFT LCD. 320×240. 256 colors. LED backlight. No USB interface & Ethernet
THM043A	4.3" TFT LCD. 480×272. 65536 colors. LED backlight. 2 USB interfaces No Ethernet.
THM043C2	4.3" TFT LCD. 480×272. 65536 colors. LED backlight.2 USB interfaces No Ethernet.
THM056A	5.6" TFT LCD. 320×234. 65536 colors. LED backlight. 2 USB interfaces No Ethernet.
THM070A	7" TFT LCD. 800×480. 65536 colors. LED backlight. 2 USB interfaces No Ethernet.
THM070AE	7" TFT LCD. 800×480. 65536 colors. LED backlight. 2 USB interfaces With Ethernet.
THM070C2	7" TFT LCD. 800×480. 65536 colors. LED backlight. 2 USB interfaces No Ethernet.
THM070CE	7" TFT LCD. 800*480. 65535 colors. LED back light. 2 USB interfaces WithEthernet
THM080A	8" TFT LCD. 800*600. 65536 colors. LED backlight. 2 USB interfaces No Ethernet.
THM080AE	8" TFT LCD. 800*600. 65536 colors. LED backlight. 2 USB interfaces With Ethernet.
THM101C2	10.1"TFT LCD. 1024*600. 65536 colors. LED backlight. 2 USB interfaces No Ethernet
THM101CE	10.1"TFT LCD. 1024*600. 65535 colors. LED back light. 2 USB interfaces With Ethernet
THM104A	10.4"TFT LCD. 800*600. 65536 colors. LED backlight. 2 USB interfaces No Ethernet
THM104AE	10.4"TFT LCD. 800*600. 65536 colors. LED backlight. 2 USB interfaces With Ethernet
THM121CE	12.1"TFT LCD. 800*600. 65535 colors. LED back light. 2 USB interfaces With Ethernet
THM150AE	15" TFT LCD. 1024*768. 65535 colors. LED backlight. 2 USB interfaces With Ethernet
Model	Description
BAMS1-Datawatch	SCADA Software

**Banner Engineering Corporate | Banner Electronic (Suzhou) Co., LTD**

**Shanghai Rep Office (The marketing headquarters in China):**

12th Floor, No.2 Xinlian Scientific Research Building, No. 1535 Hongmei Road, Shanghai

Postal Code: 200030

Telephone: 021-24226888

Facsimile: 021-24226999

**The nation-wide technical service hotline: 400-630-6336**

Web: [www.bannerengineering.com.cn](http://www.bannerengineering.com.cn)



Sensing • Detecting • Automation Expert