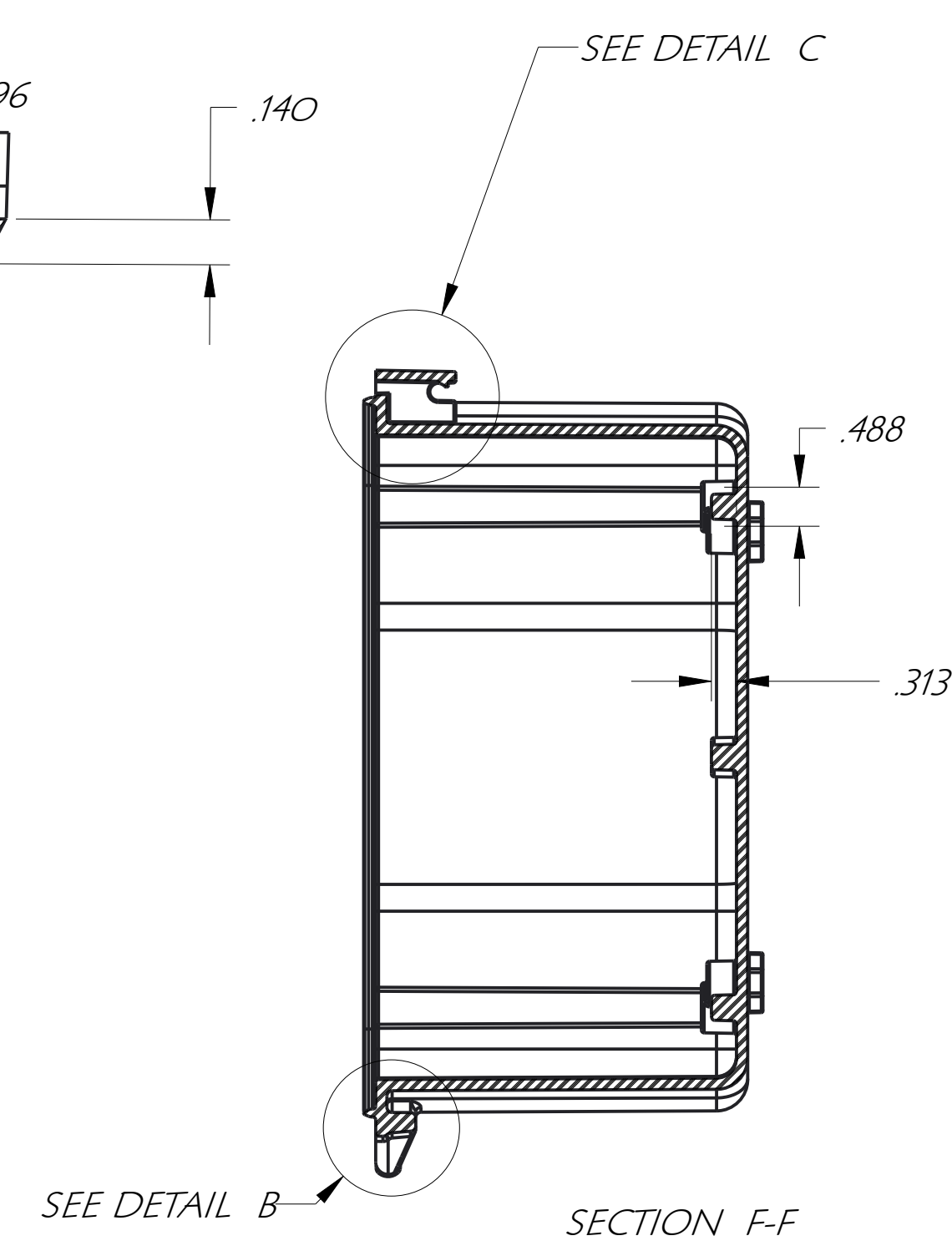
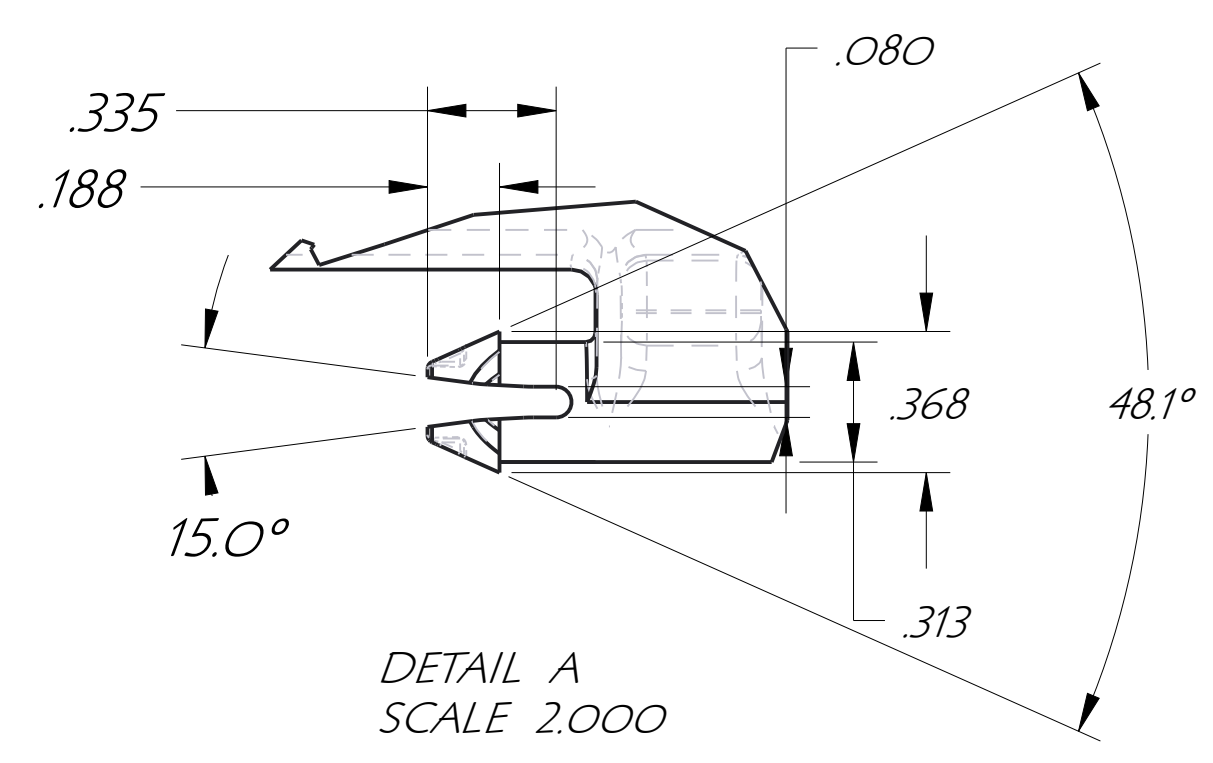
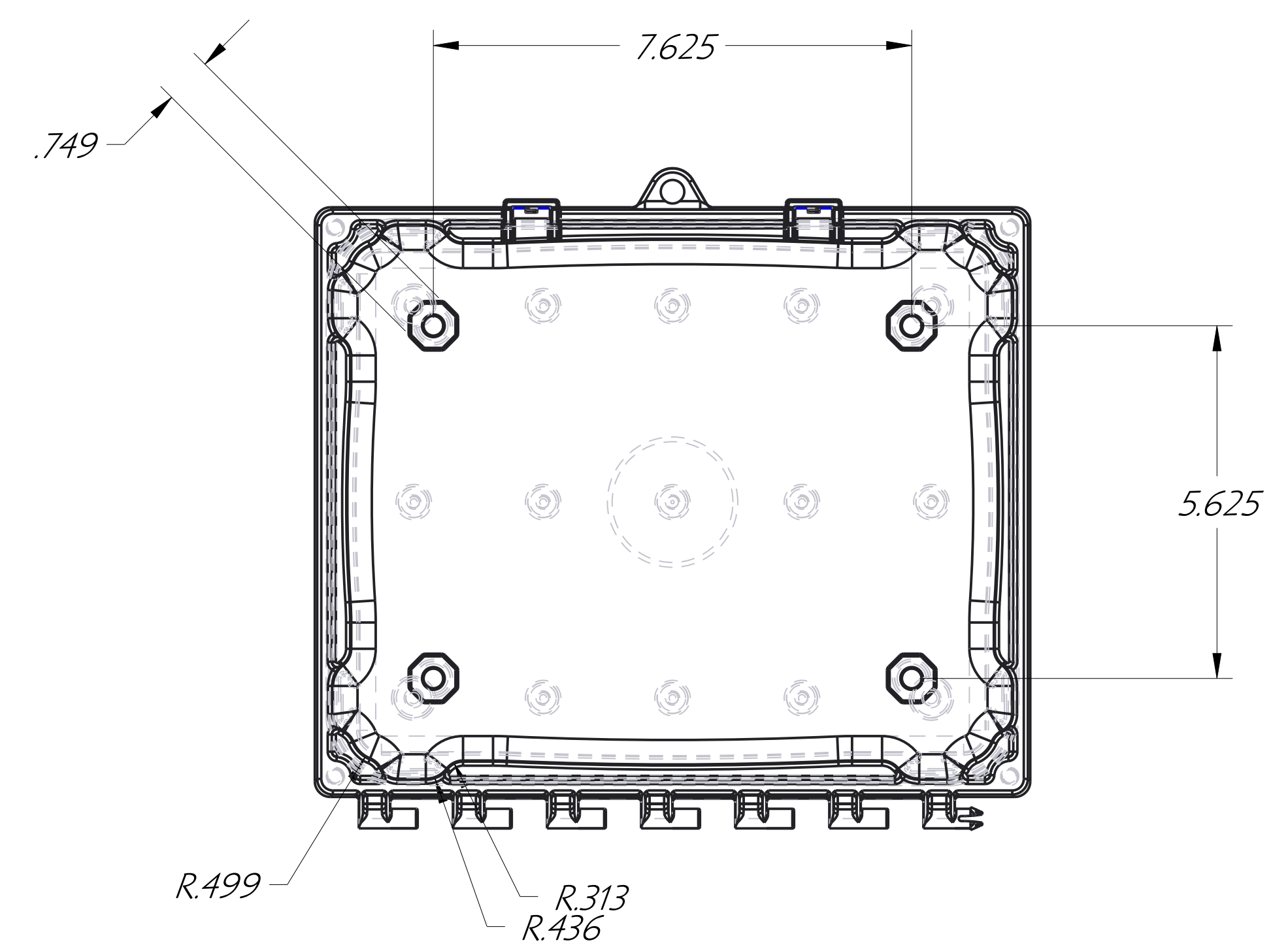


DETAIL C
SCALE 2.000

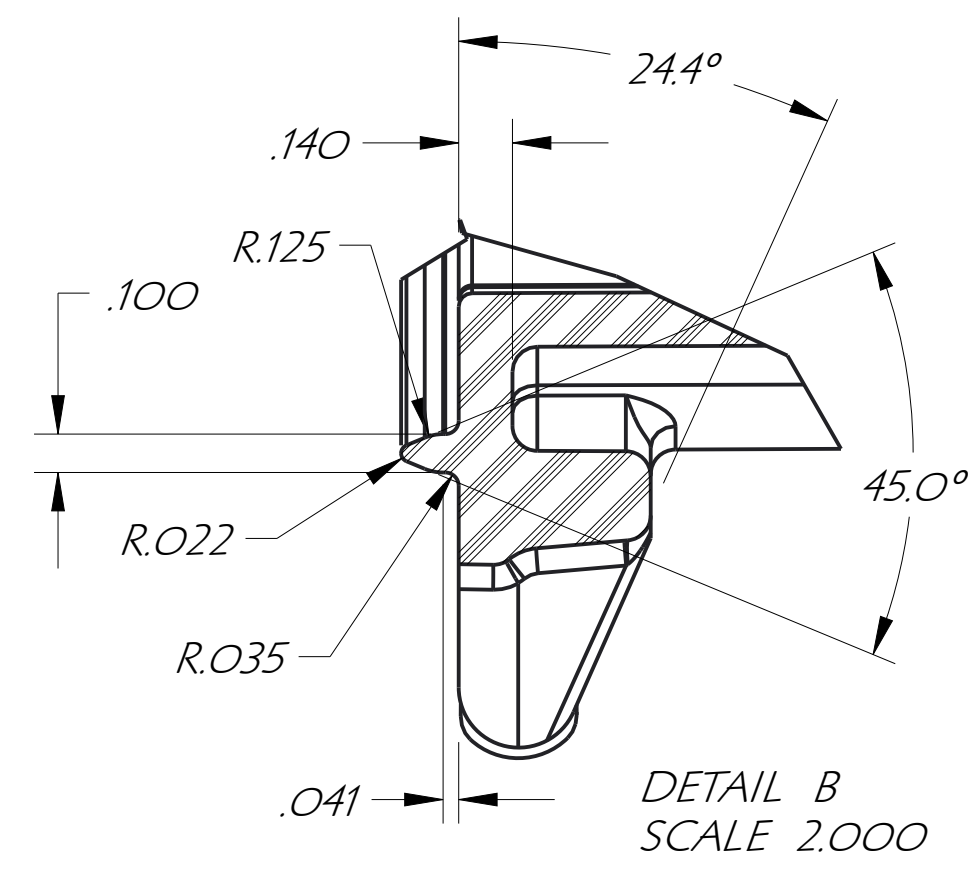


SECTION F-F

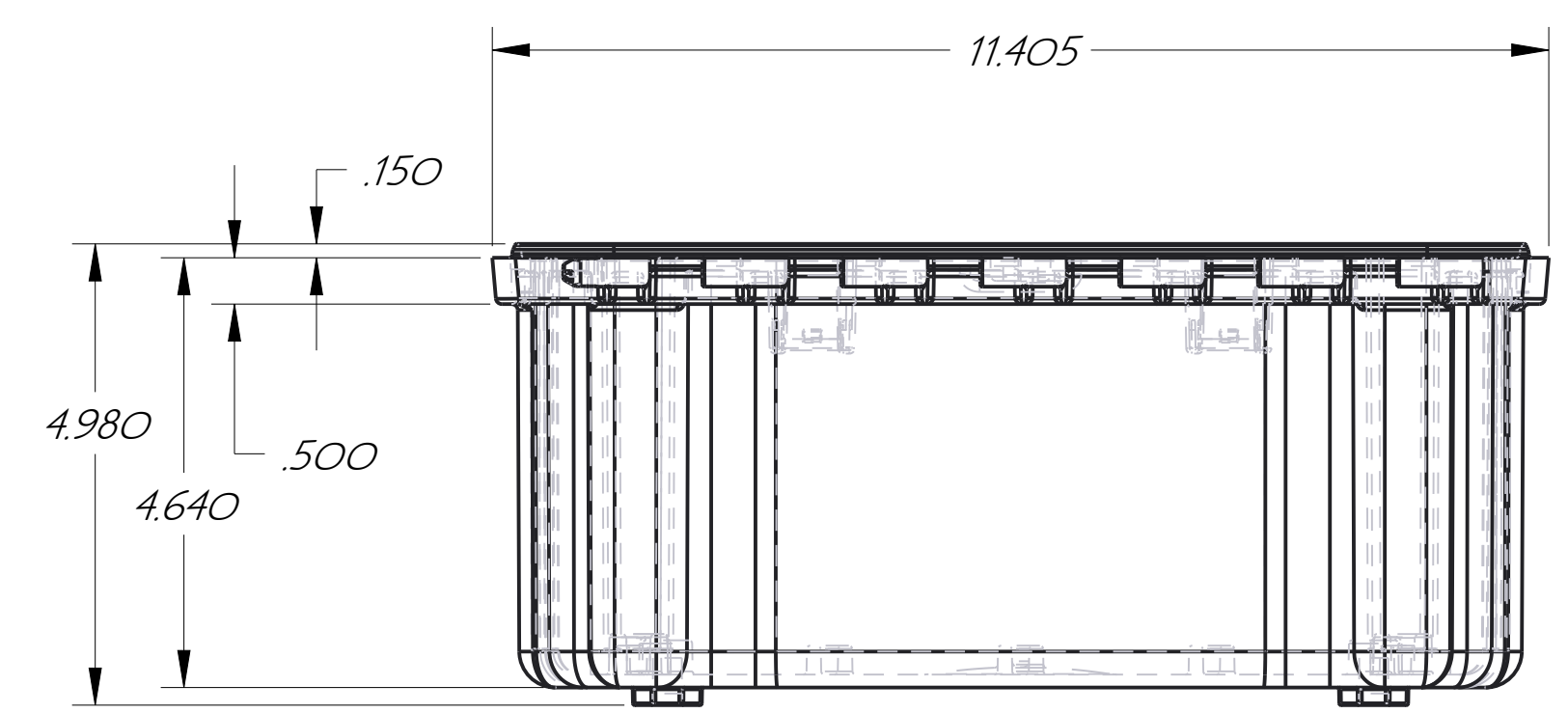
Note: Thread bosses use #10 x 3/8 Trilobular thread forming screw



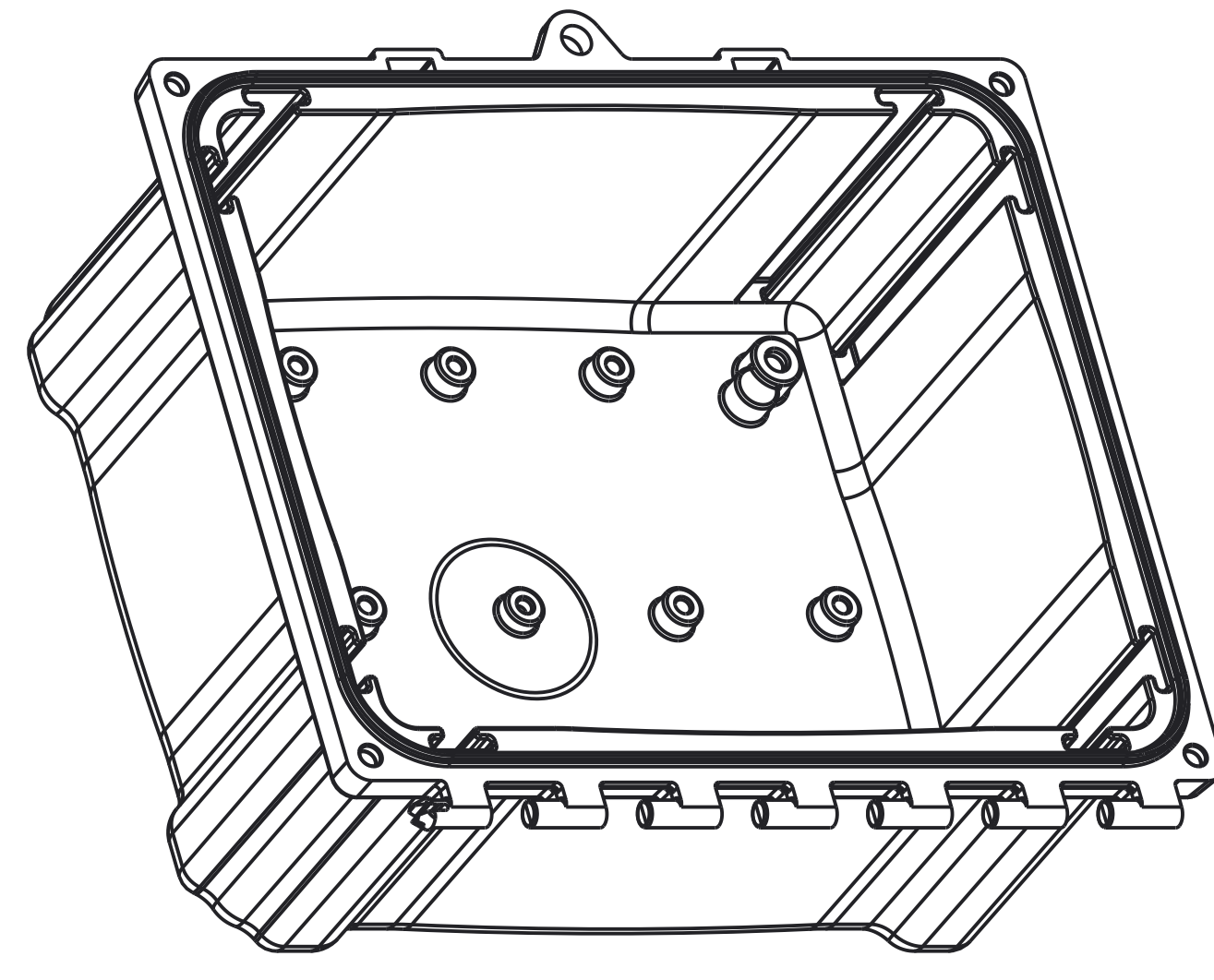
DETAIL A
SCALE 2.000



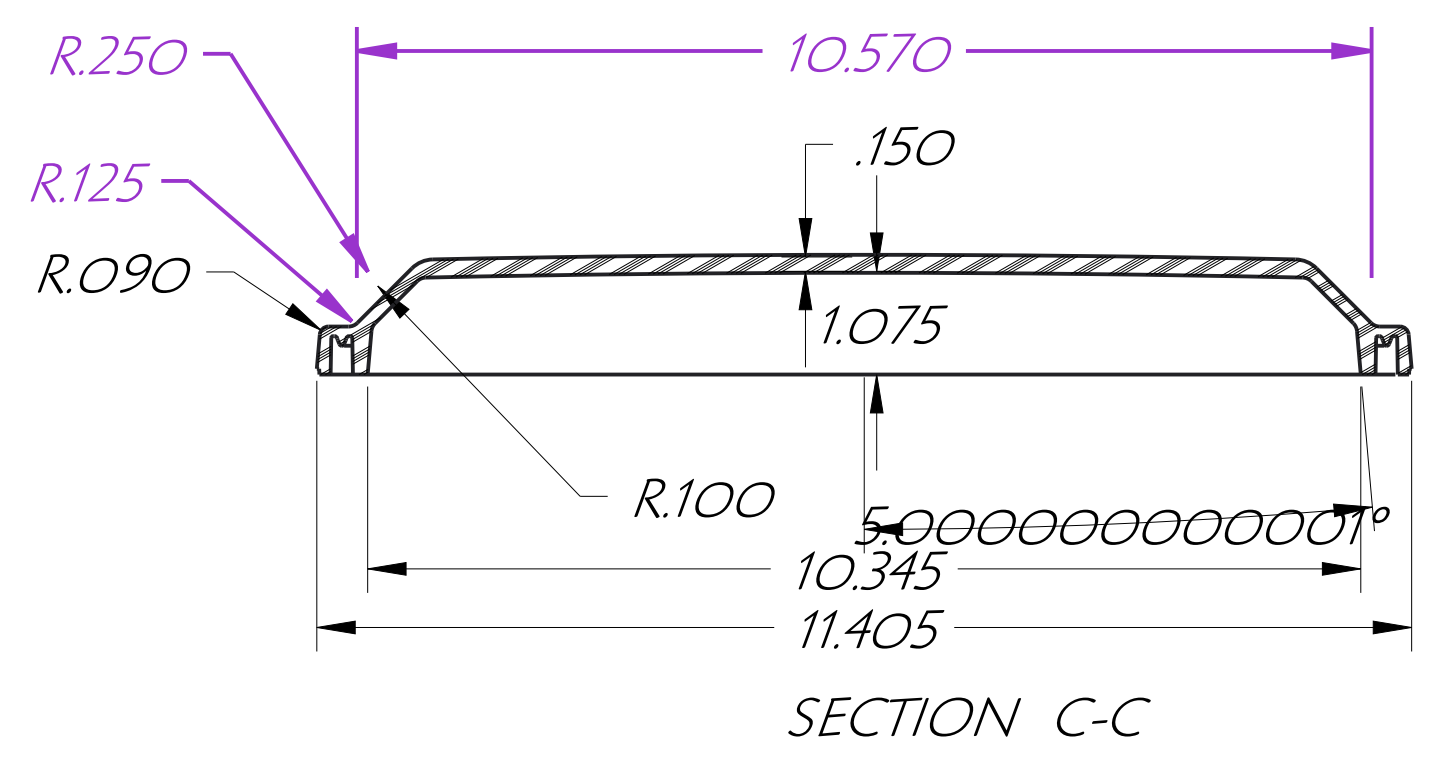
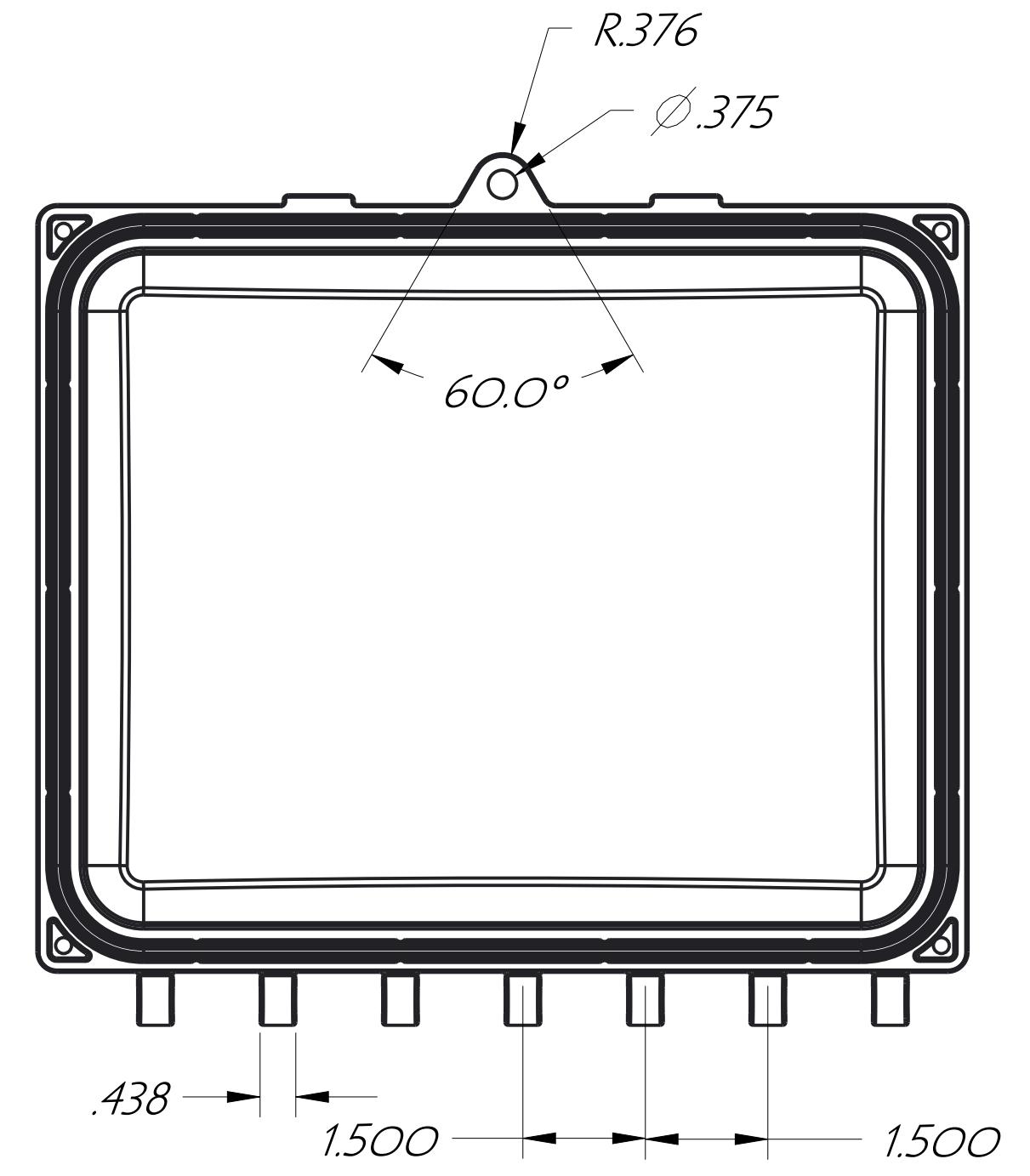
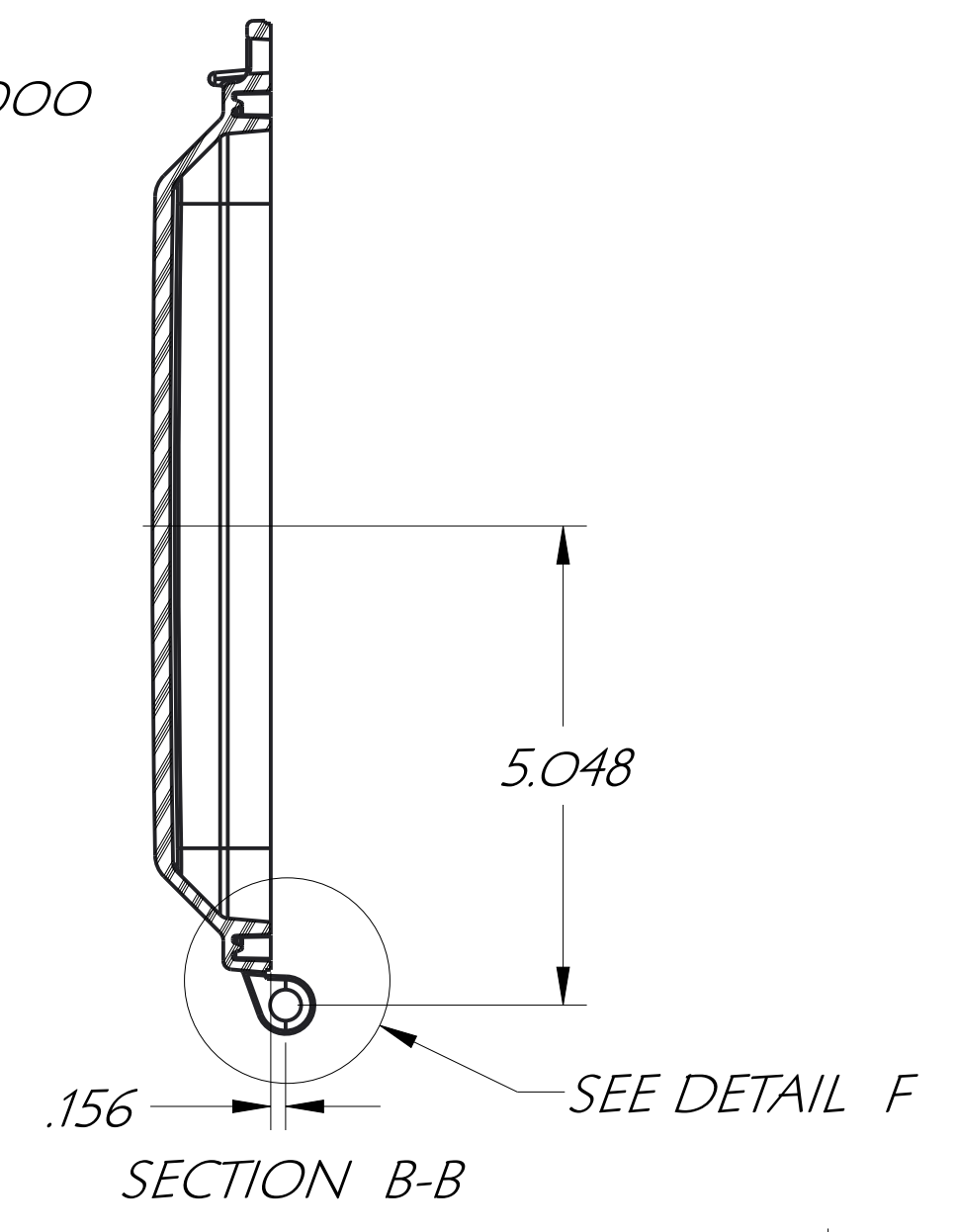
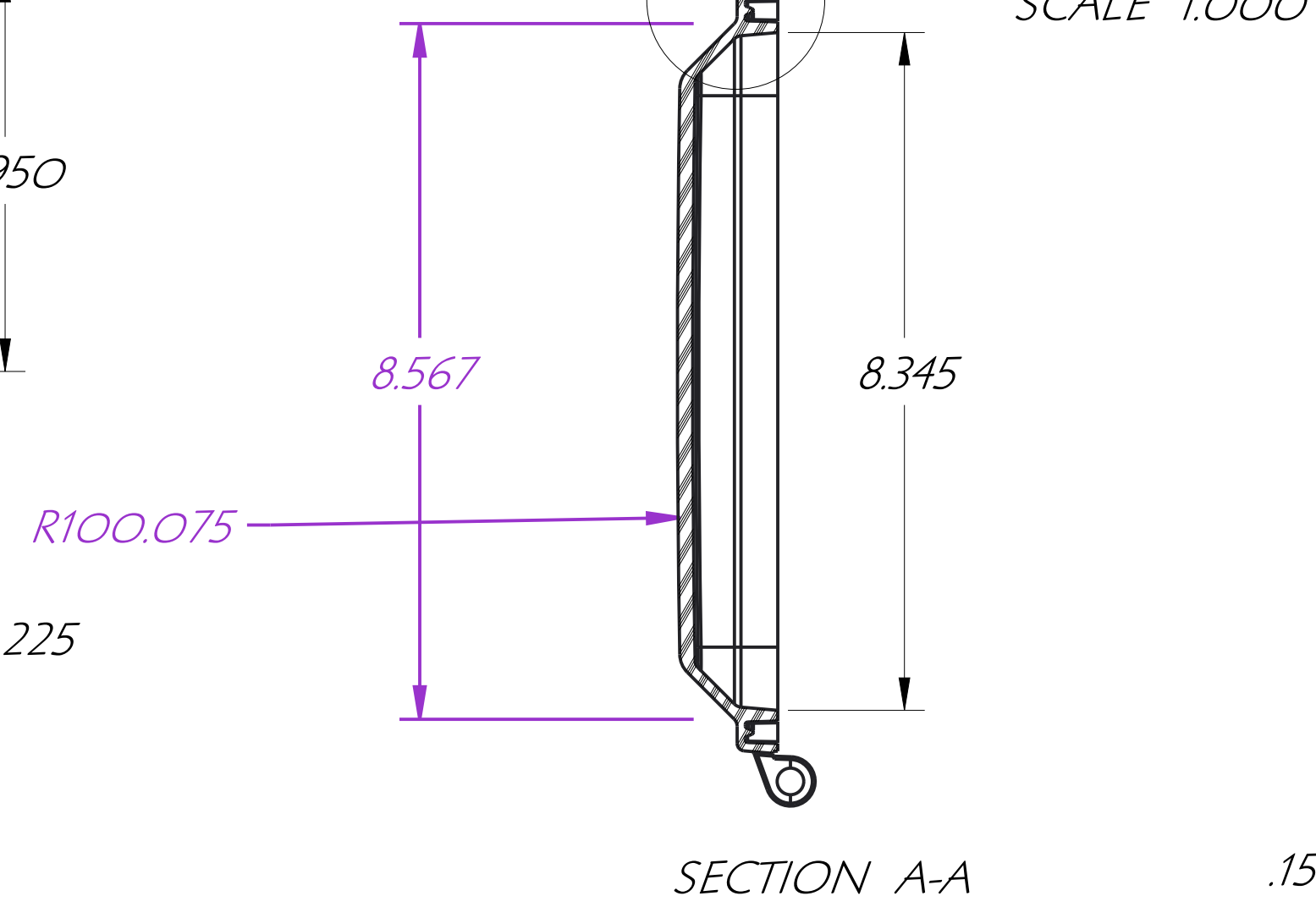
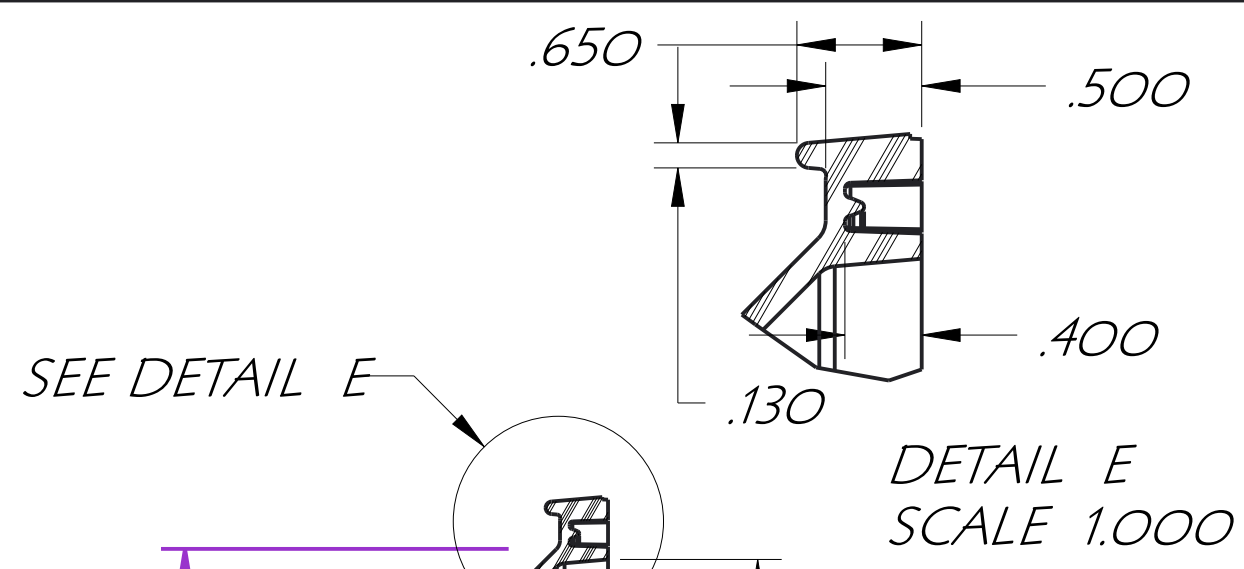
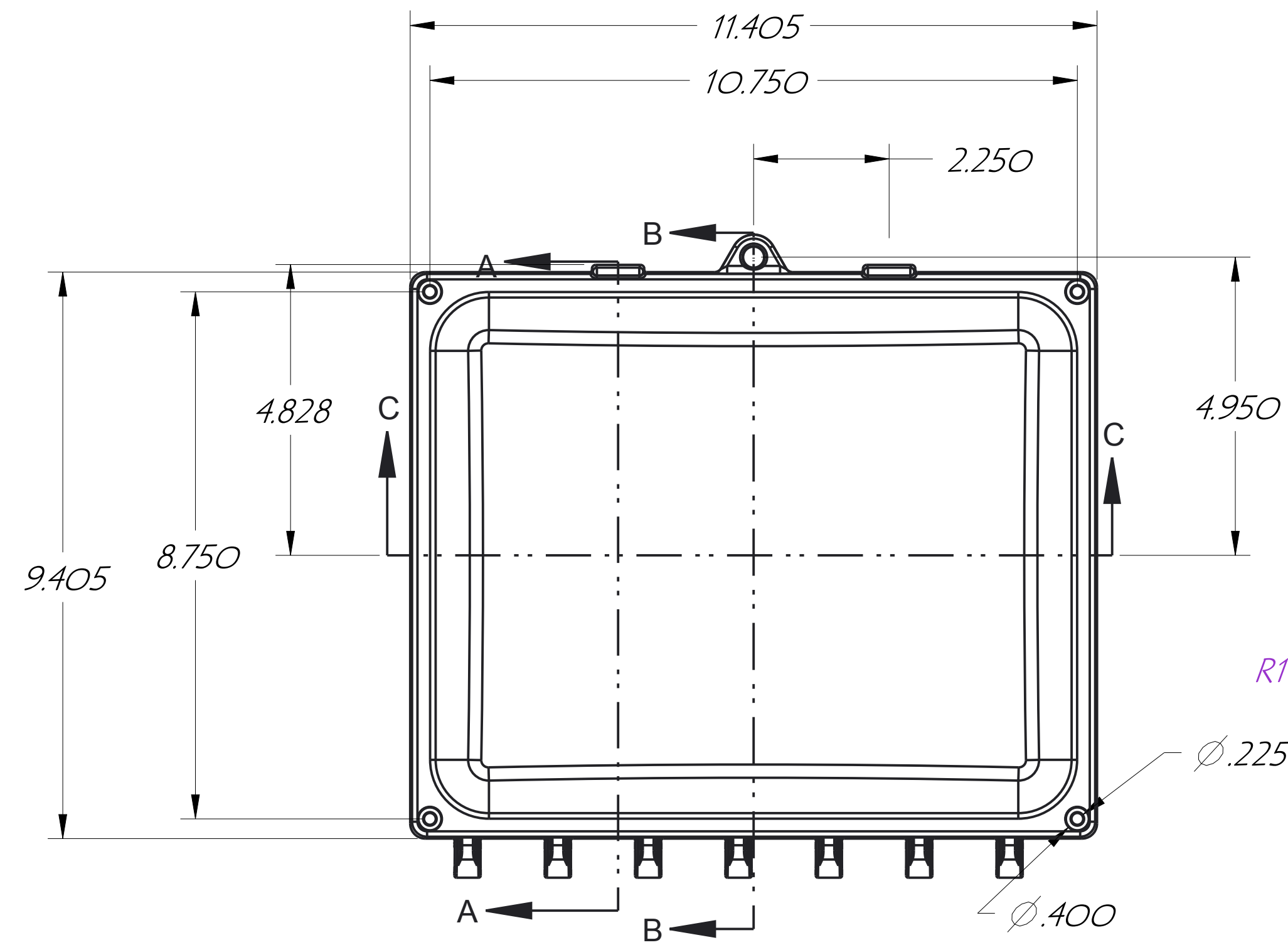
DETAIL B
SCALE 2.000



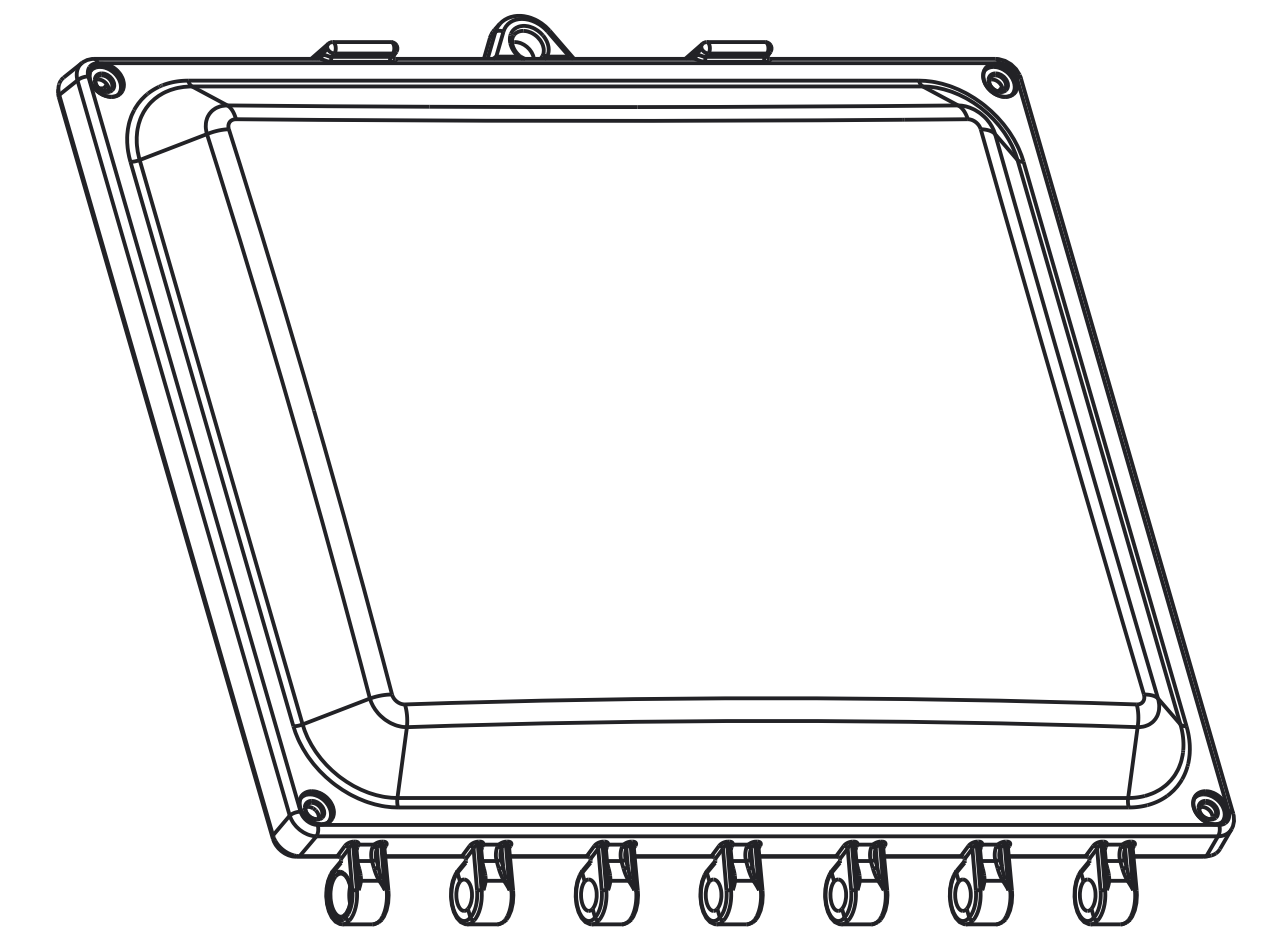
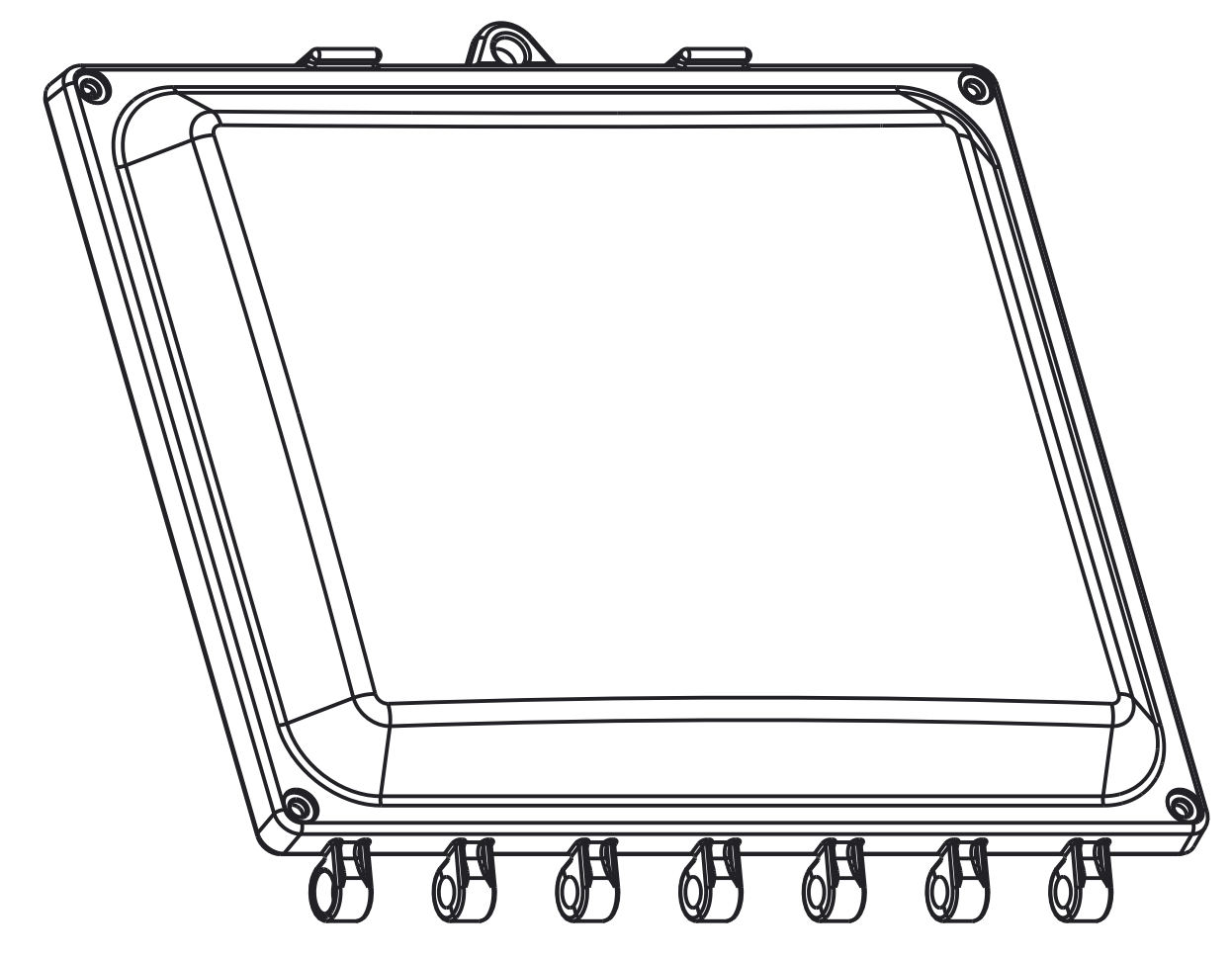
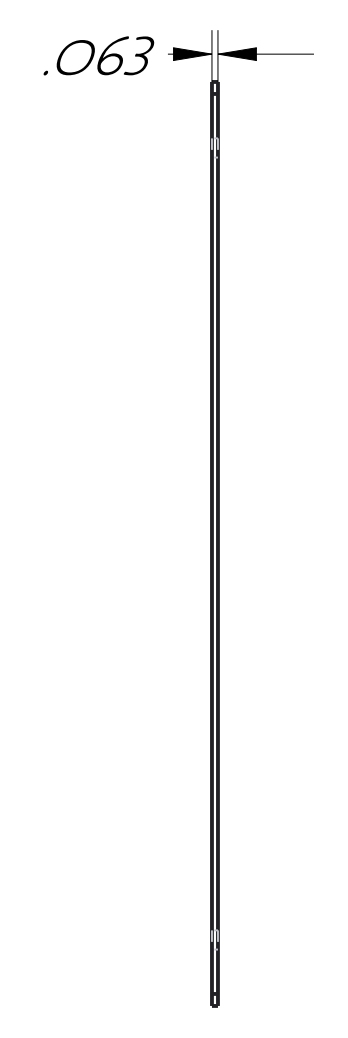
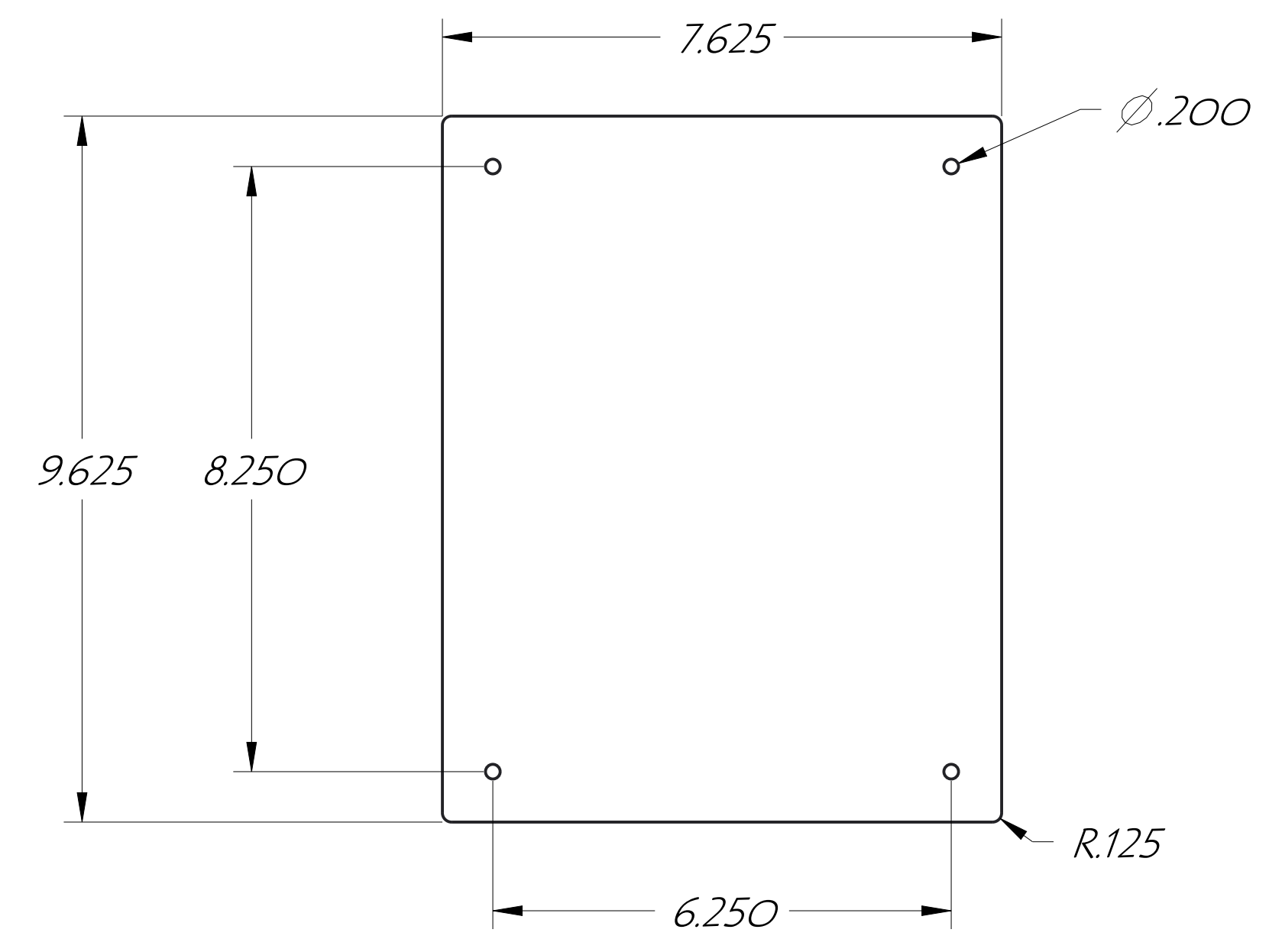
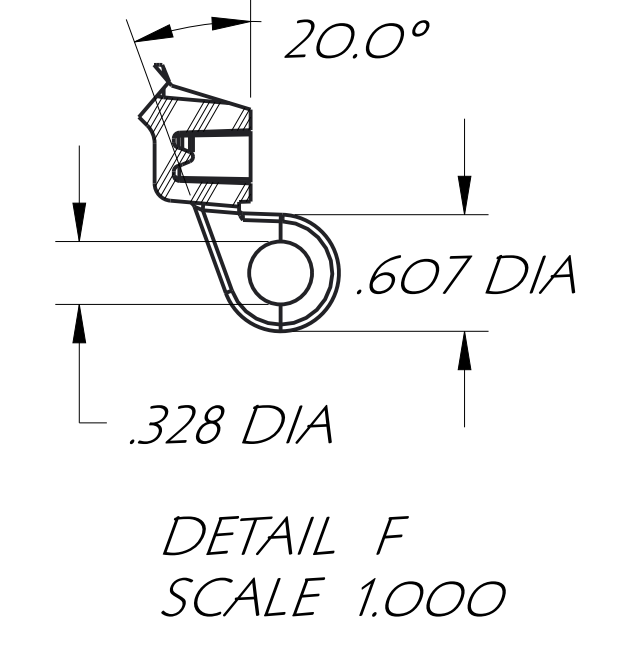
10 X 8 ENCLOSURE



DES. C.R.W.	DRN. C.R.W.	CHKD.	CUSTOMER	
APP. DATE 10/16/07	SCALE	PART NAME ENCLOSURE & LID		
TOLERANCES:		2 PLACE DEC. ±.010	FRAC.	PART NO.
UNLESS OTHERWISE SHOWN		3 PLACE DEC. ±.005	±1/64	PART MATL POLYCARBONATE
		4 PLACE DEC. ±.0005		SHRINK .006/IN.
TOOL DESC. SINGLE CAVITY INJECTION MOLD				SHEET OF

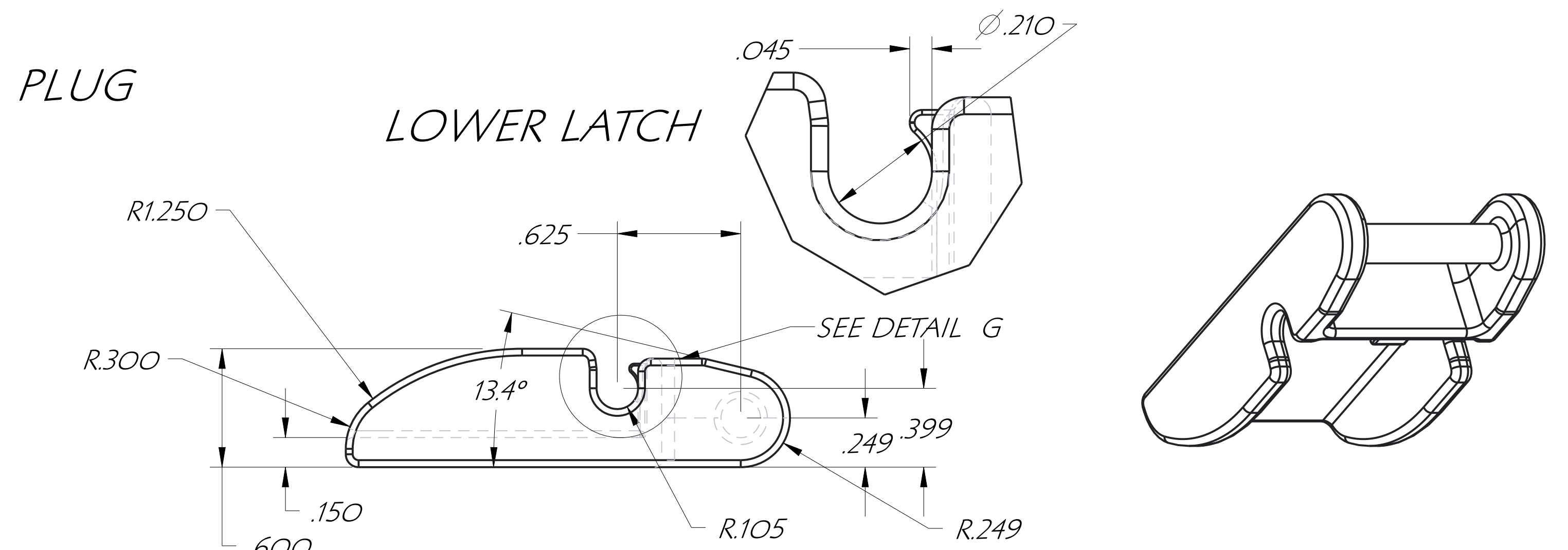
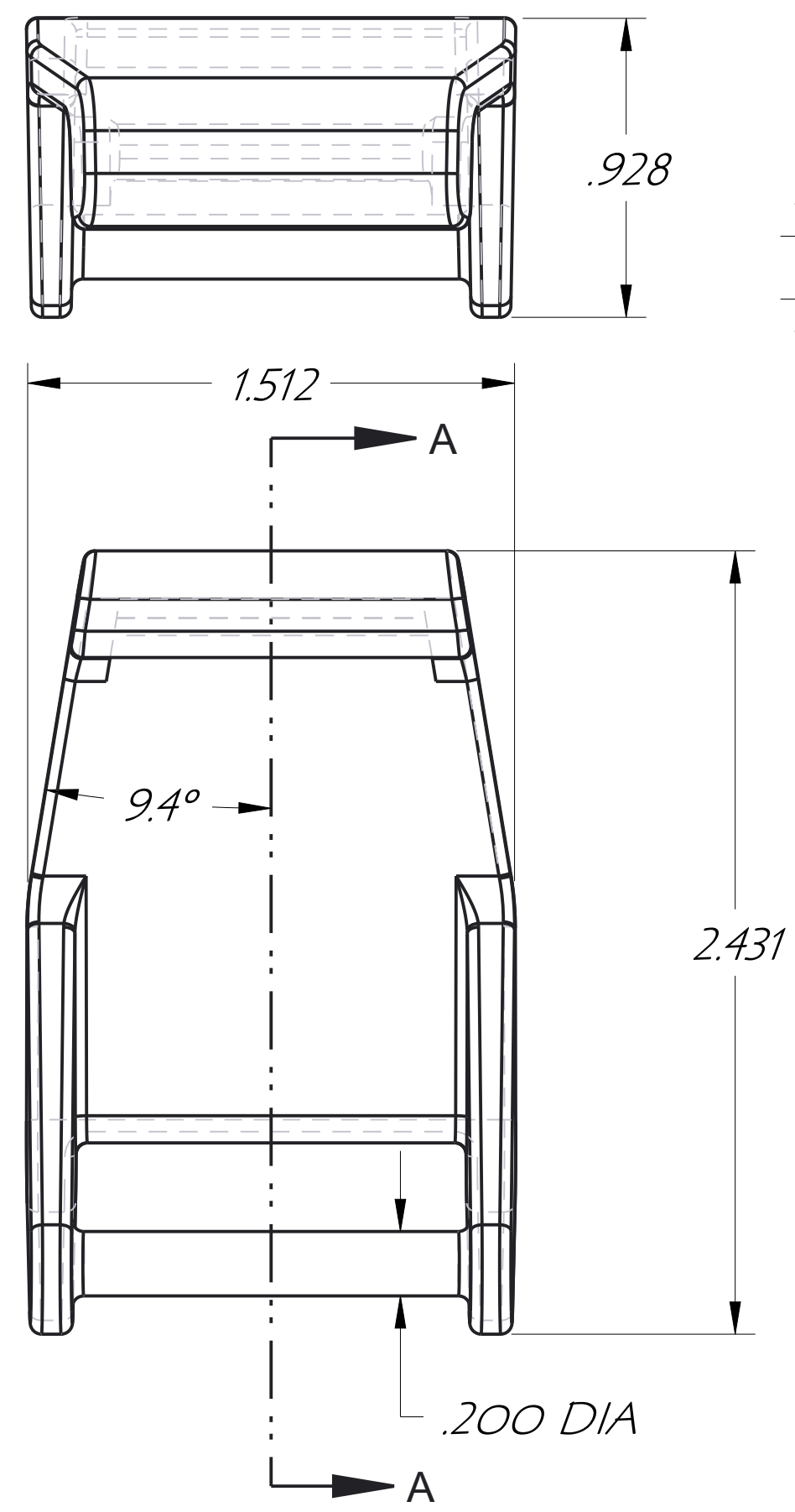
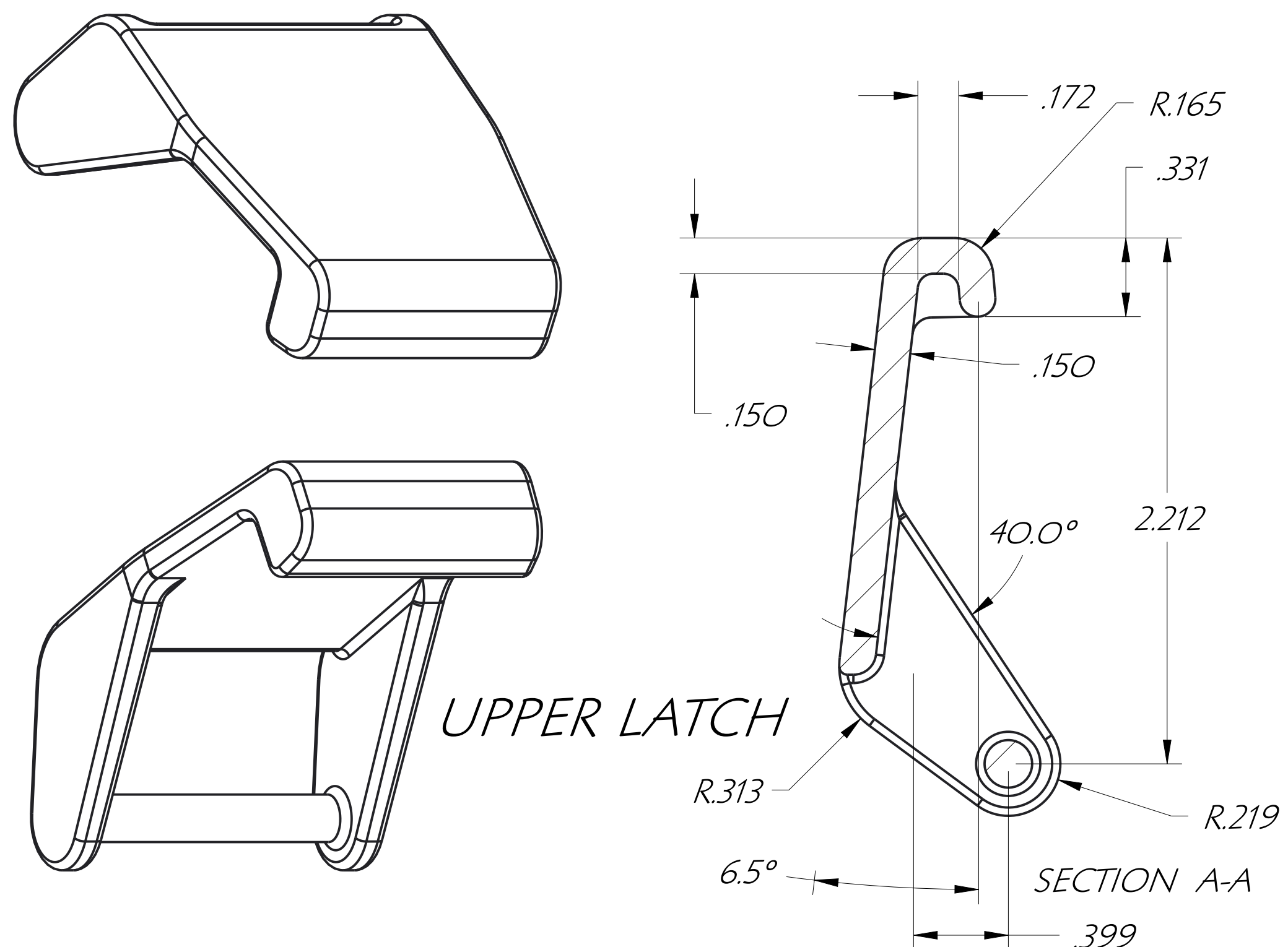
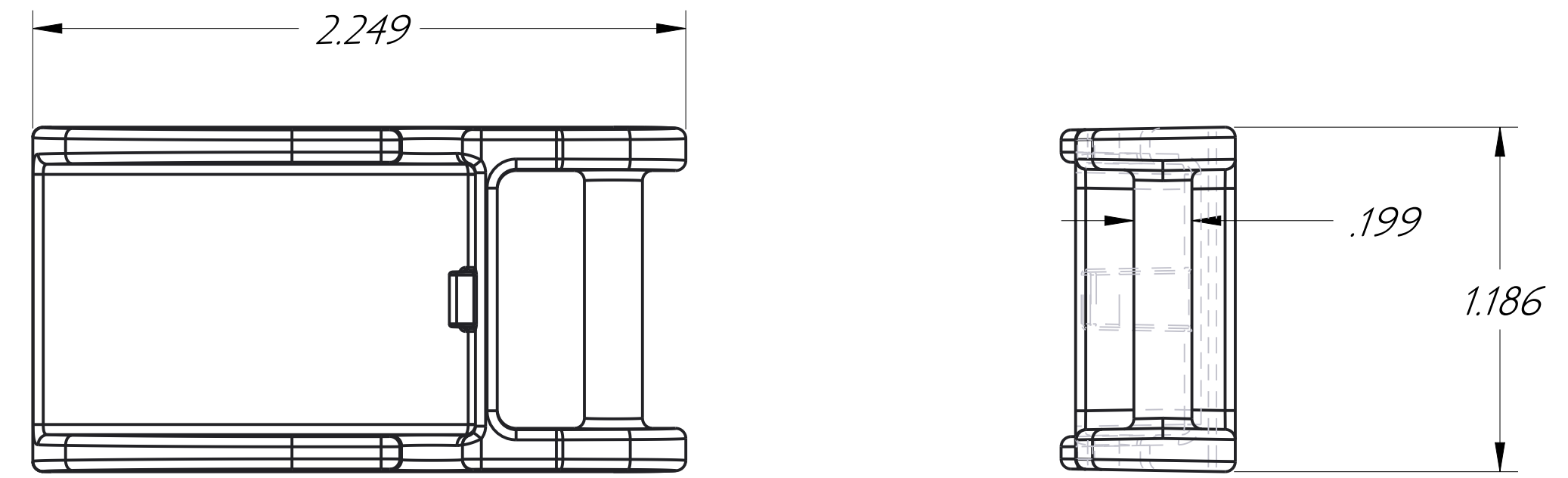
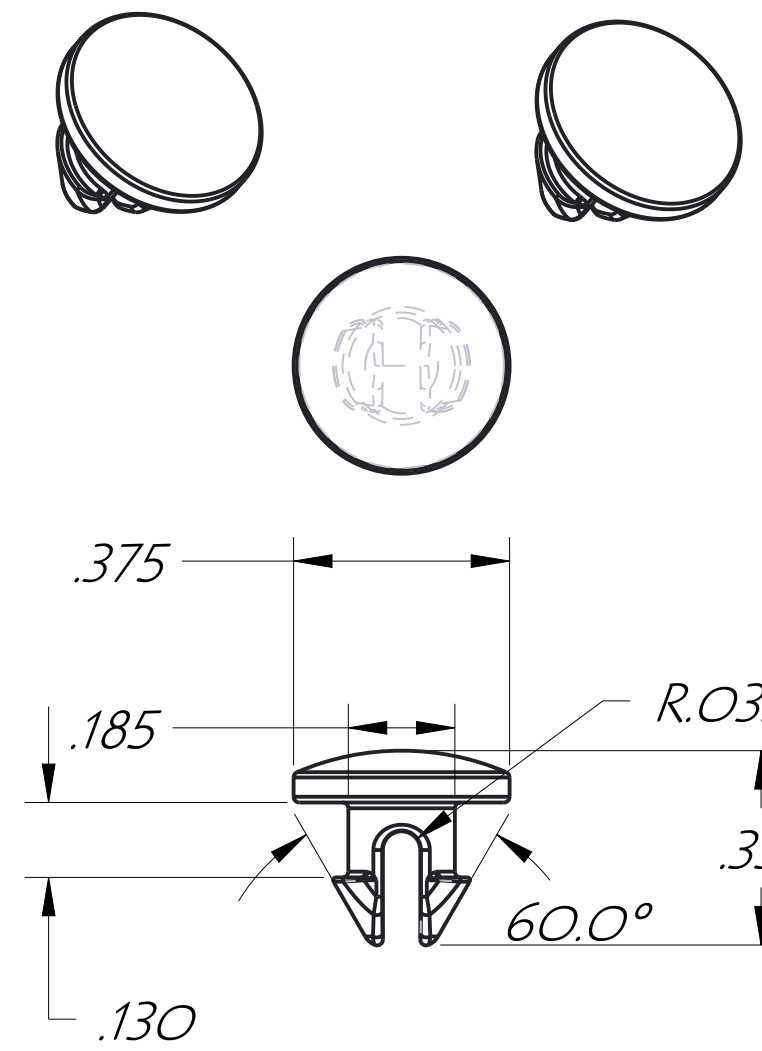
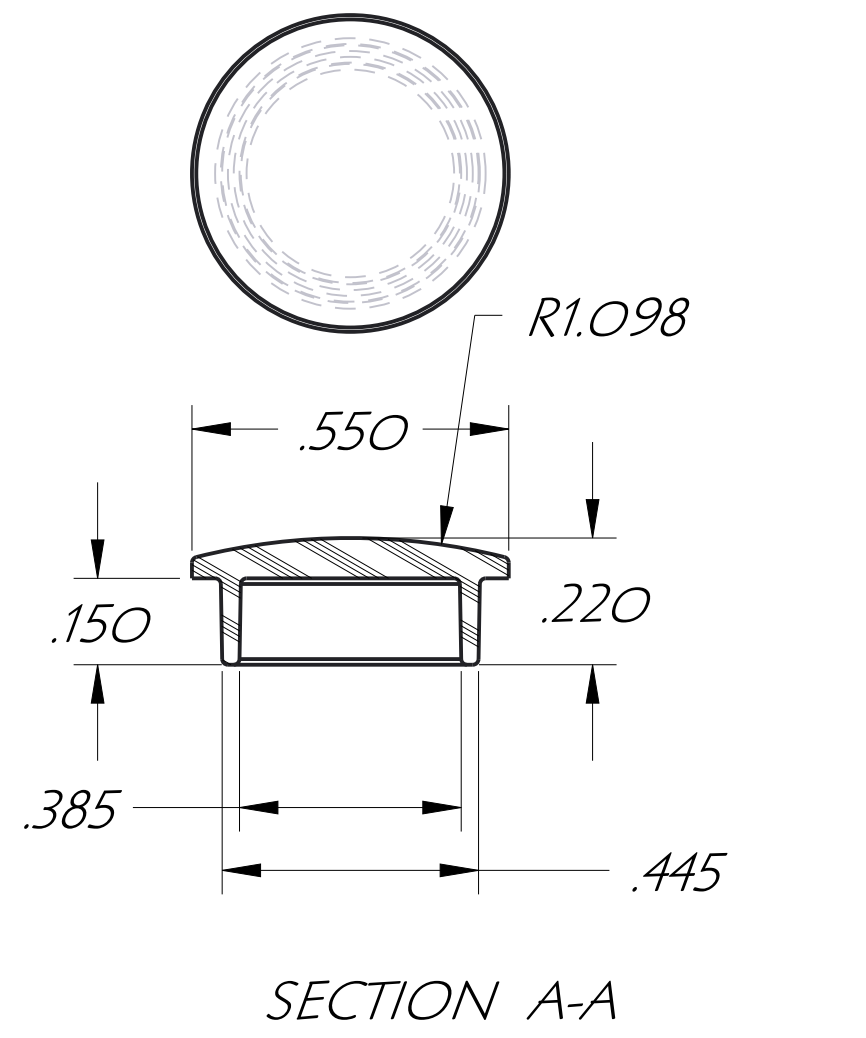
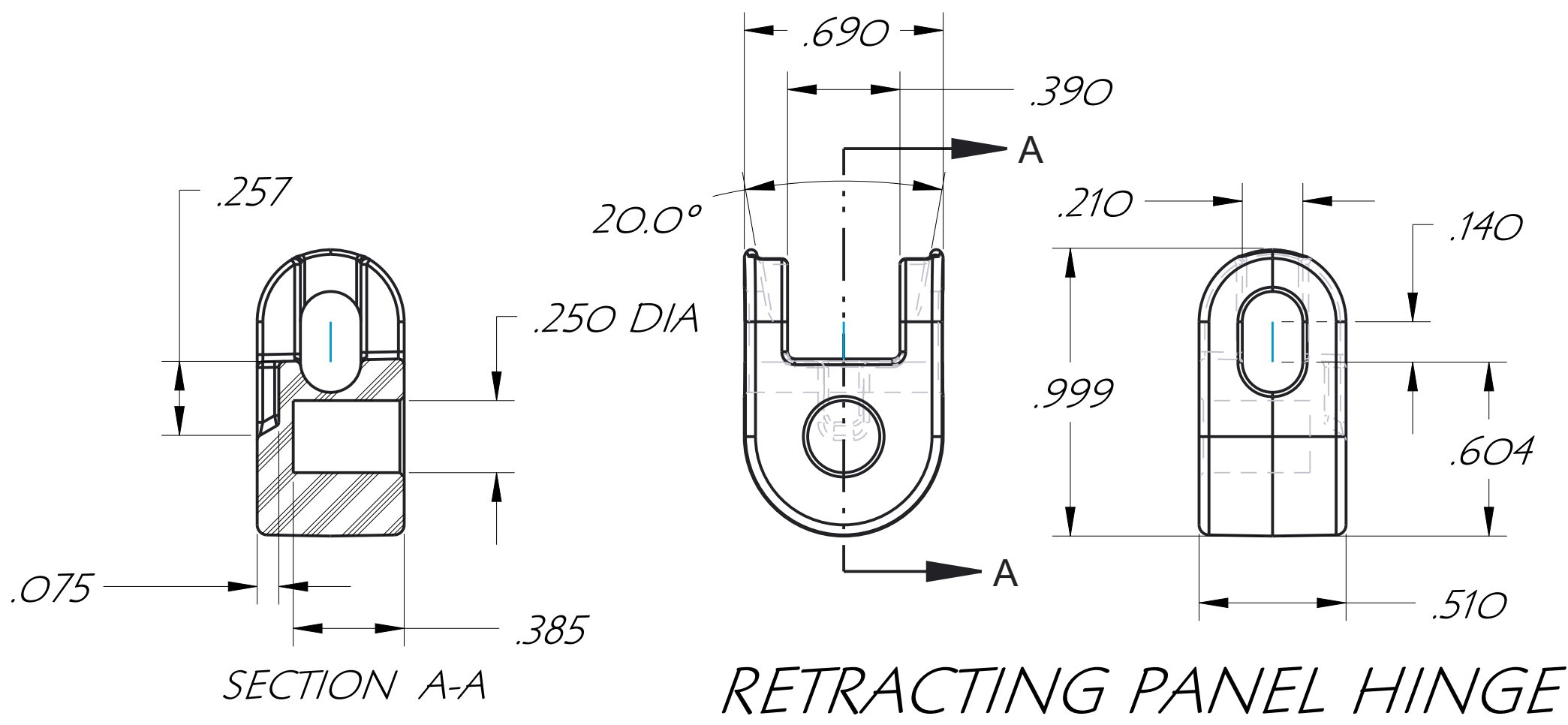
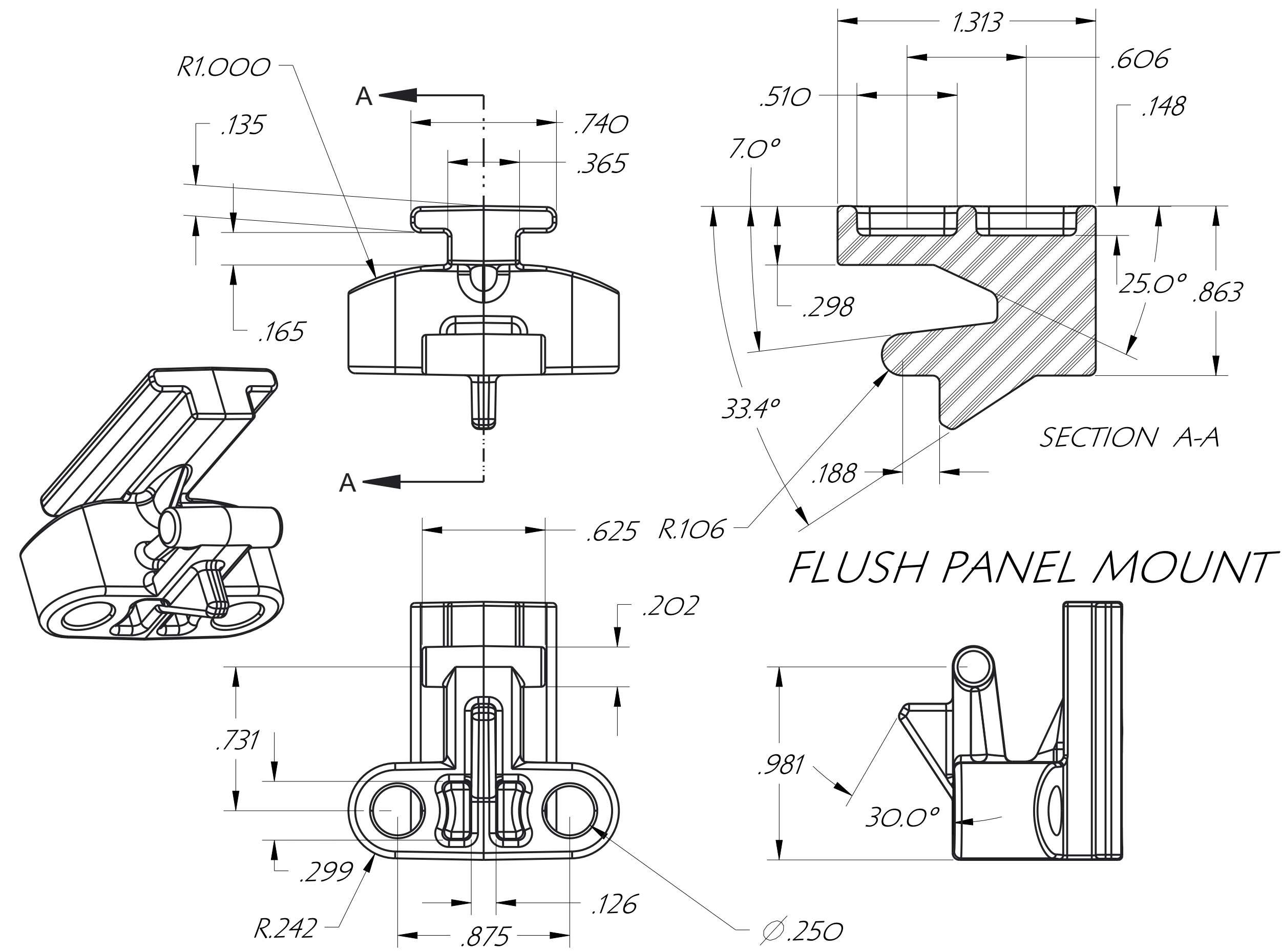
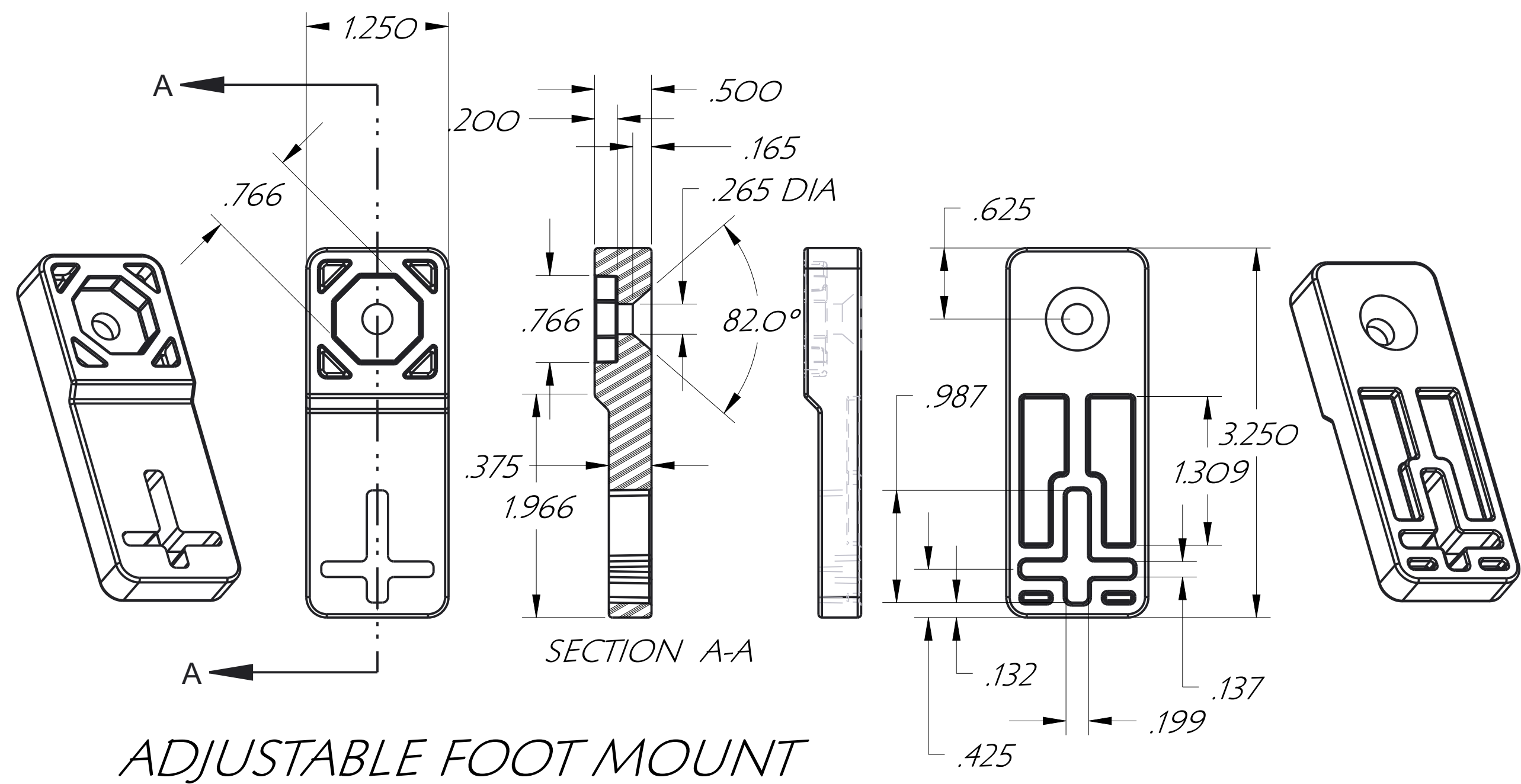


10 X 8 LID



SUB PANEL OR SWING PANEL

DES. C.R.W.	DRN. C.R.W.	CHKD.		ATTA BOX		CUSTOMER	
APP. DATE 10/16/07	SCALE			PART NAME ENCLOSURE & LID	PART NO.	PART MATL POLYCARBONATE	
TOLERANCES: UNLESS OTHERWISE SHOWN				2 PLACE DEC. ±.010	FRAC. ±1/64	TOOL DESC. SINGLE CAVITY INJECTION MOLD	SHRINK .006/IN.
				3 PLACE DEC. ±.005			SHEET OF
				4 PLACE DEC. ±.0005			



DES: C.R.W.	DRN: C.R.W.	CHKD:	CUSTOMER:
APP: DATE 10/16/07	SCALE:	PART NAME: ENCLOSURE & LID	PART NO.:
TOLERANCES: 2 PLACE DEC. ±.010	FRAC. ±.1/64	TOOL DESC: SINGLE CAVITY INJECTION MOLD	PART MATL: POLYCARBONATE
UNLESS OTHERWISE SHOWN	3 PLACE DEC. ±.005		SHRINK: .006/IN.
	4 PLACE DEC. ±.0005		SHEET OF