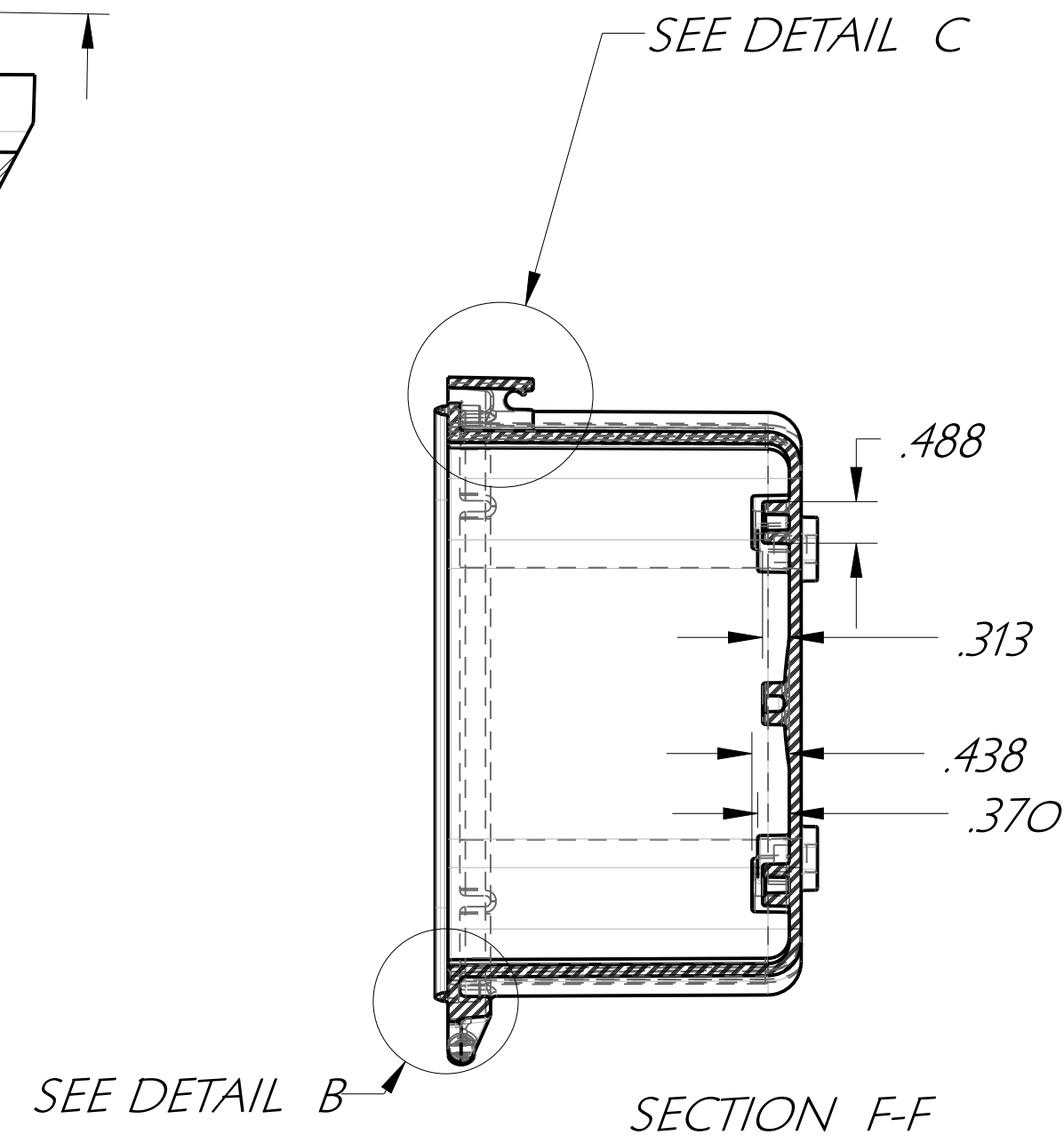
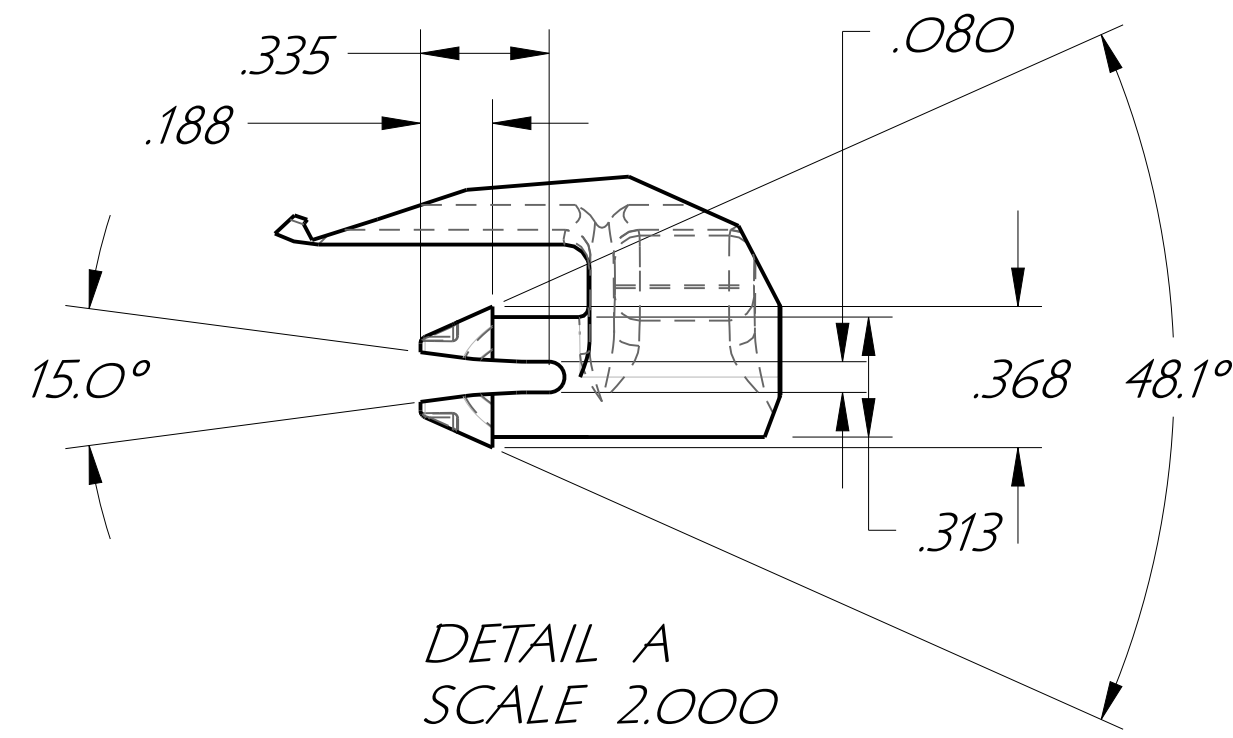
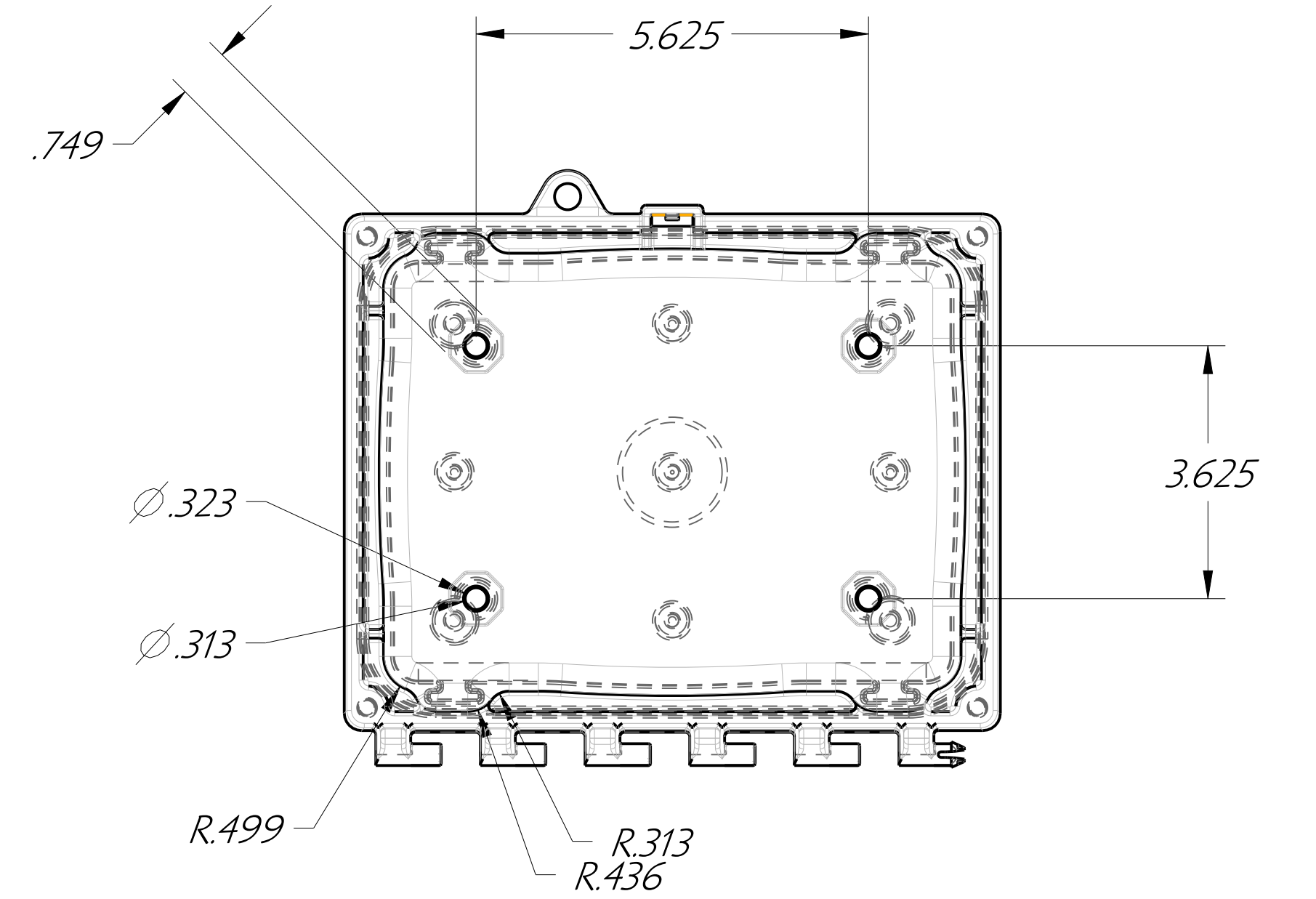


DETAIL C
SCALE 2.000

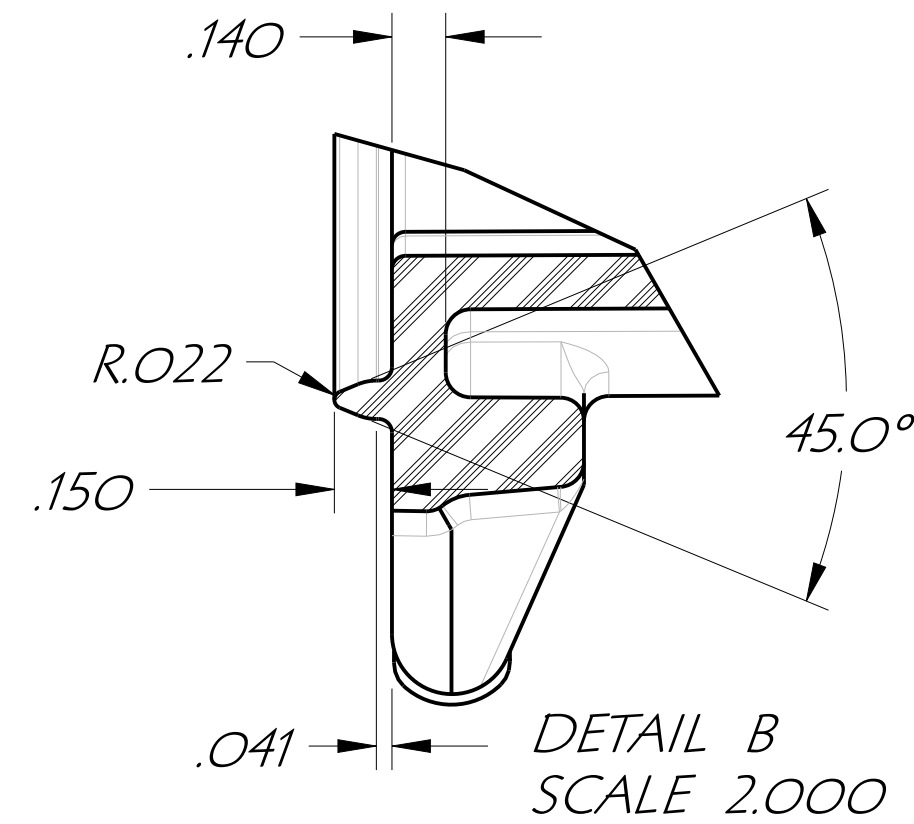


SECTION F-F

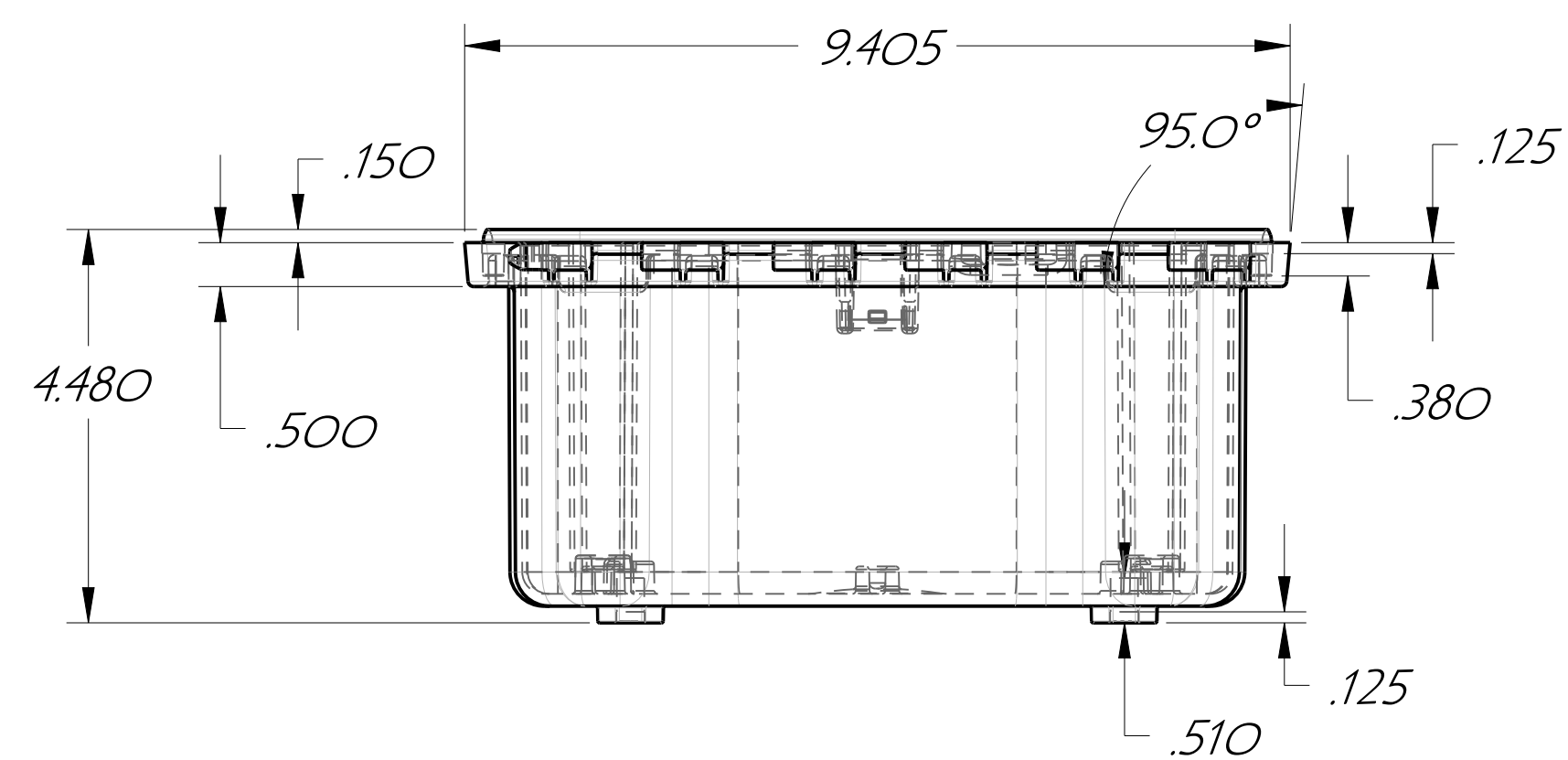
NOTE: Thread bosses use #10 x 3/8 Trilobular thread forming screw



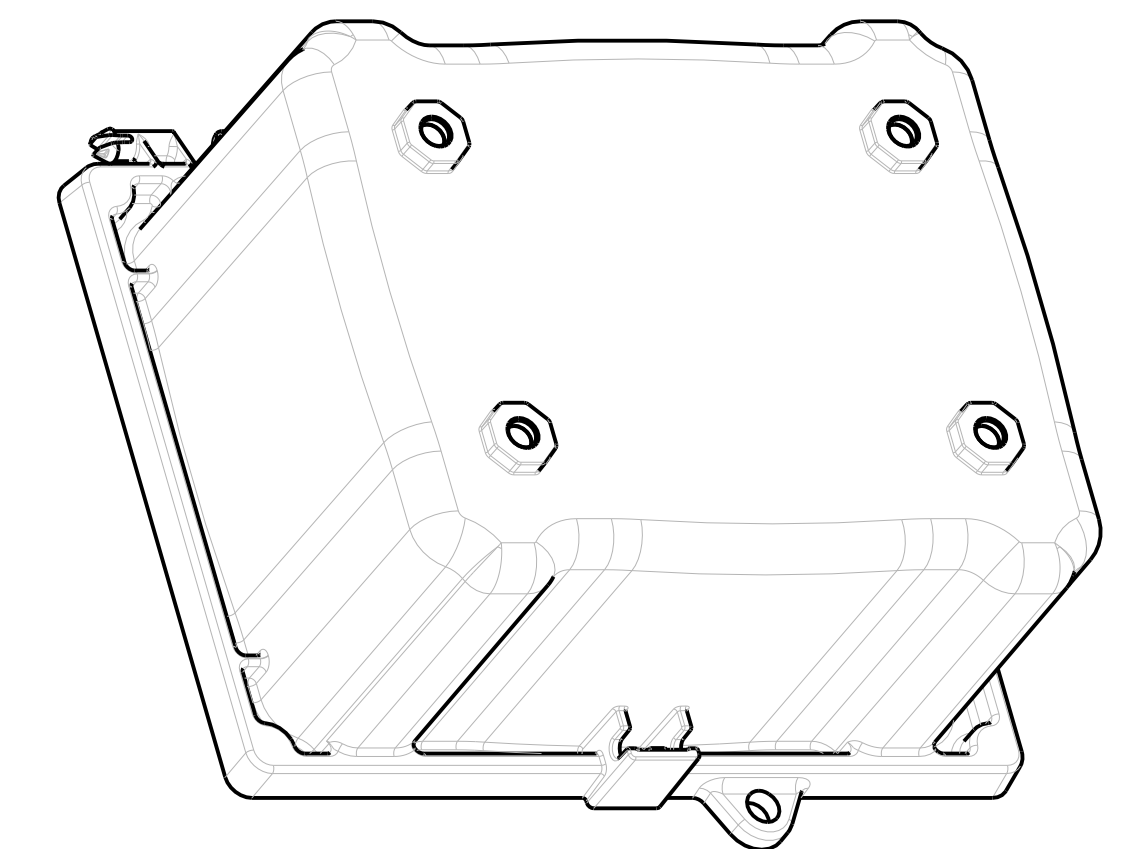
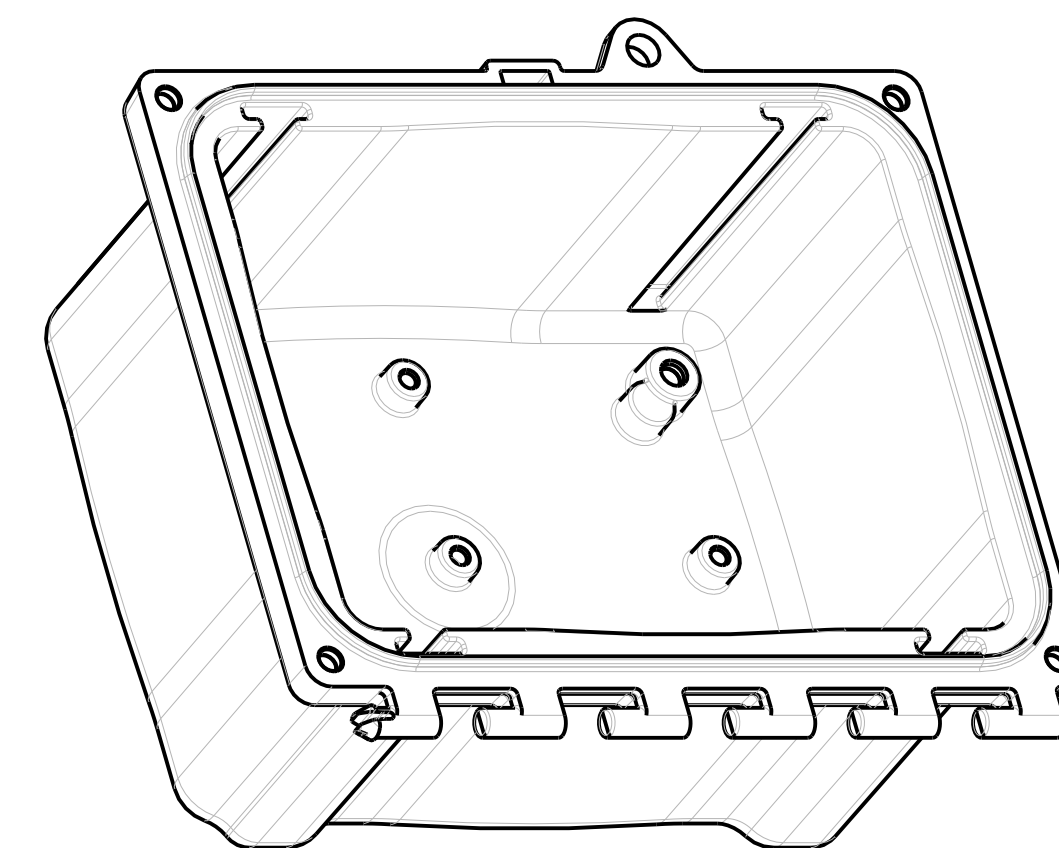
DETAIL A
SCALE 2.000



DETAIL B
SCALE 2.000



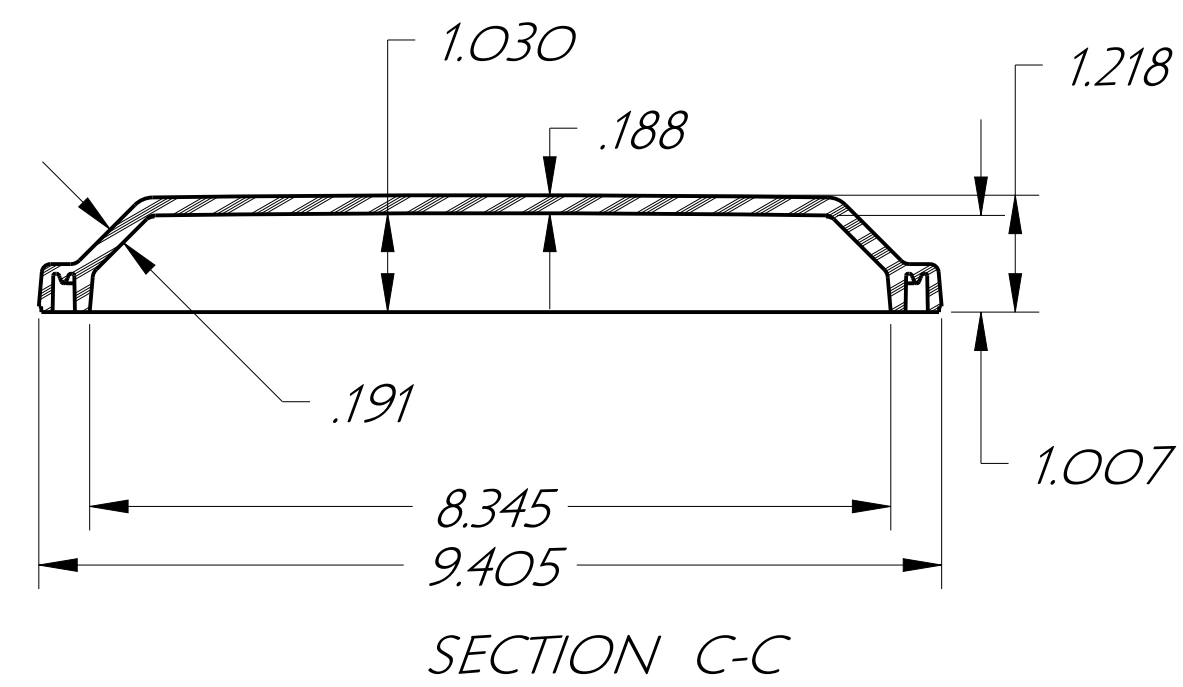
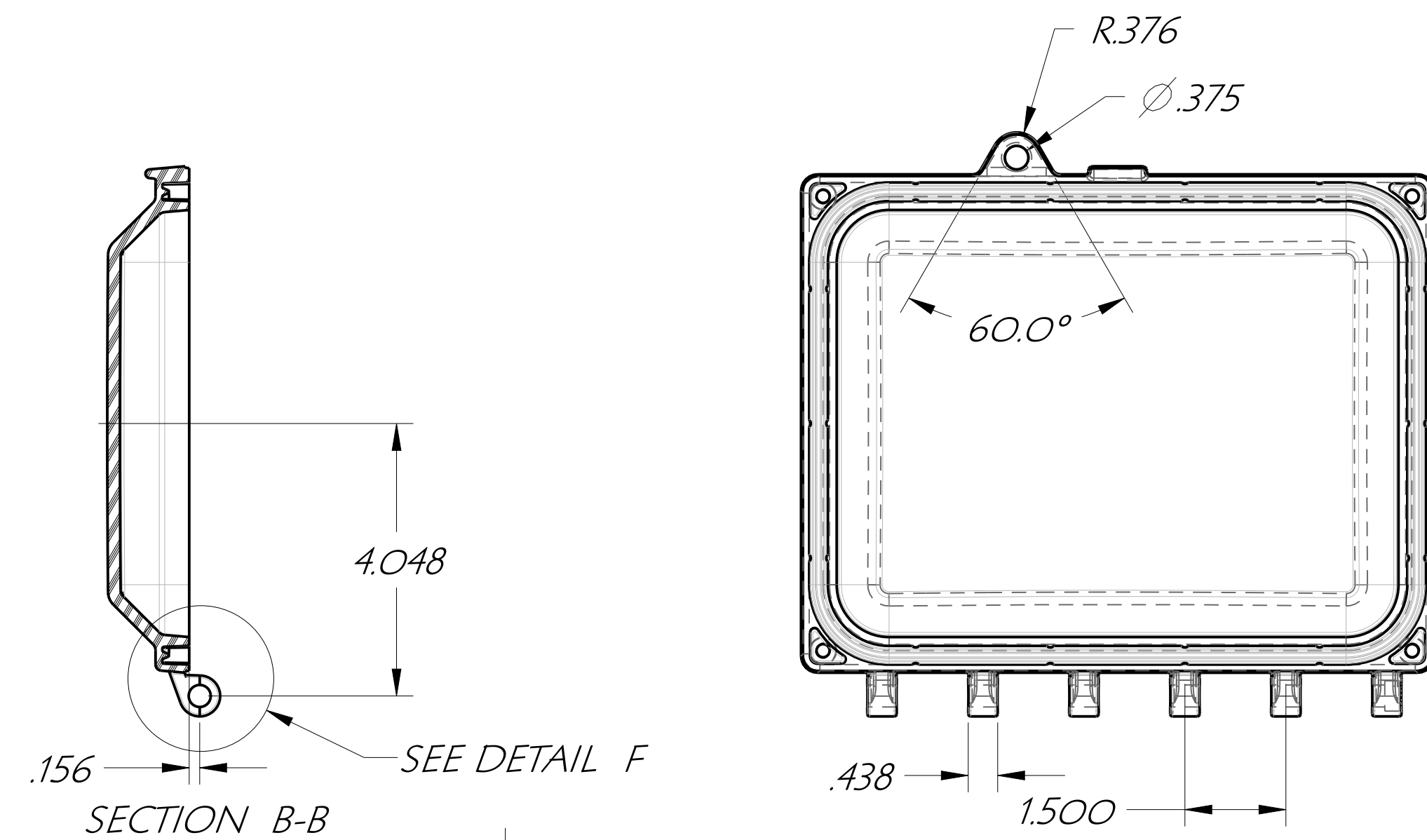
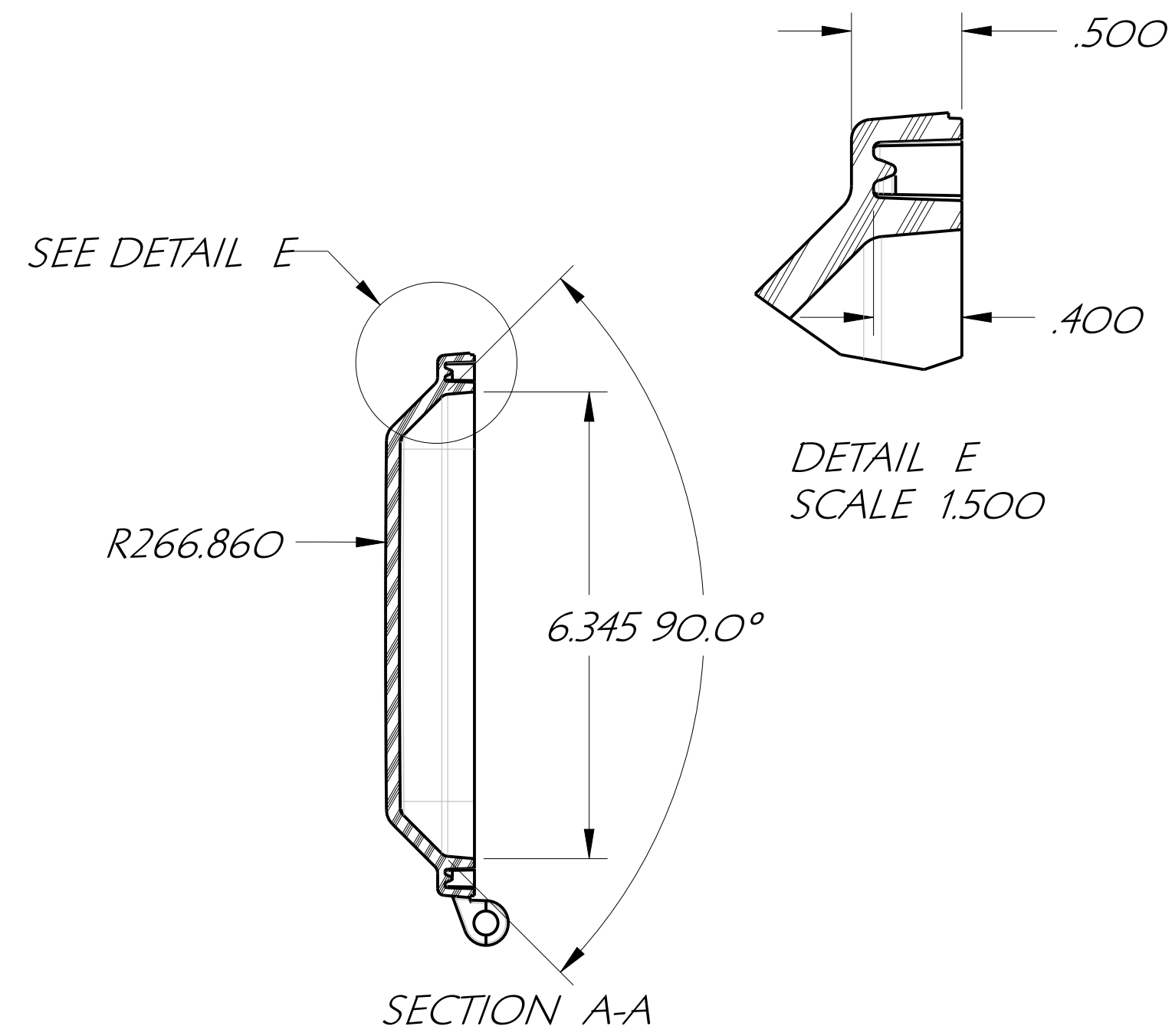
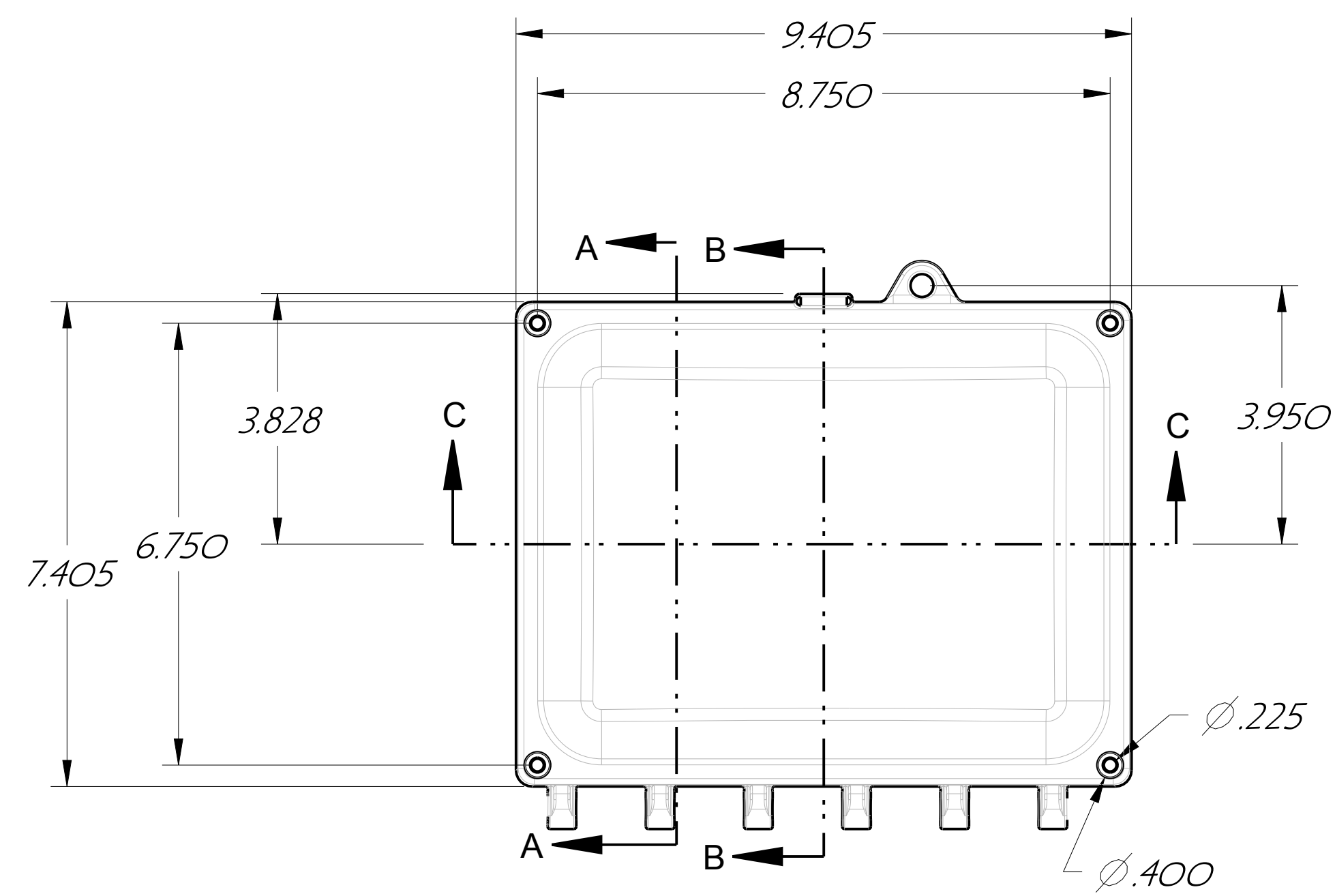
8 X 6 ENCLOSURE



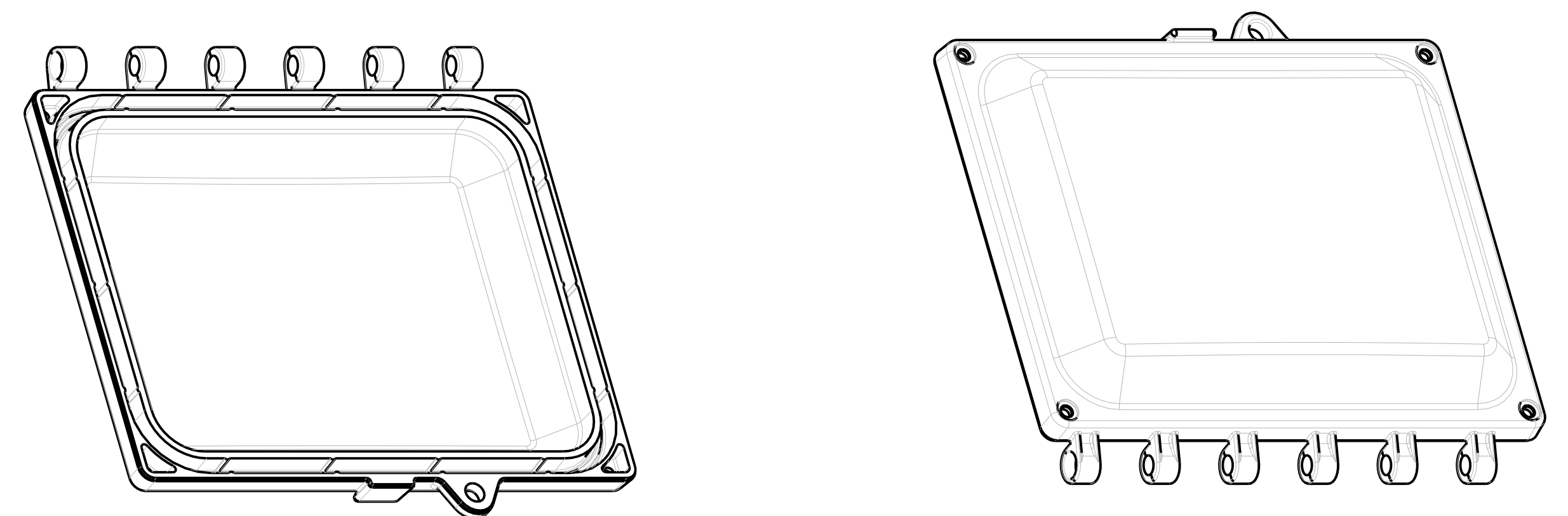
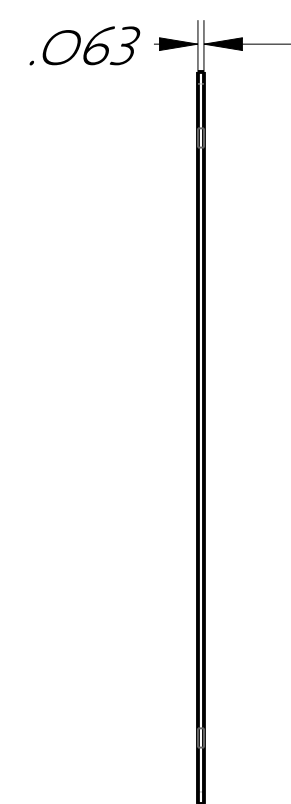
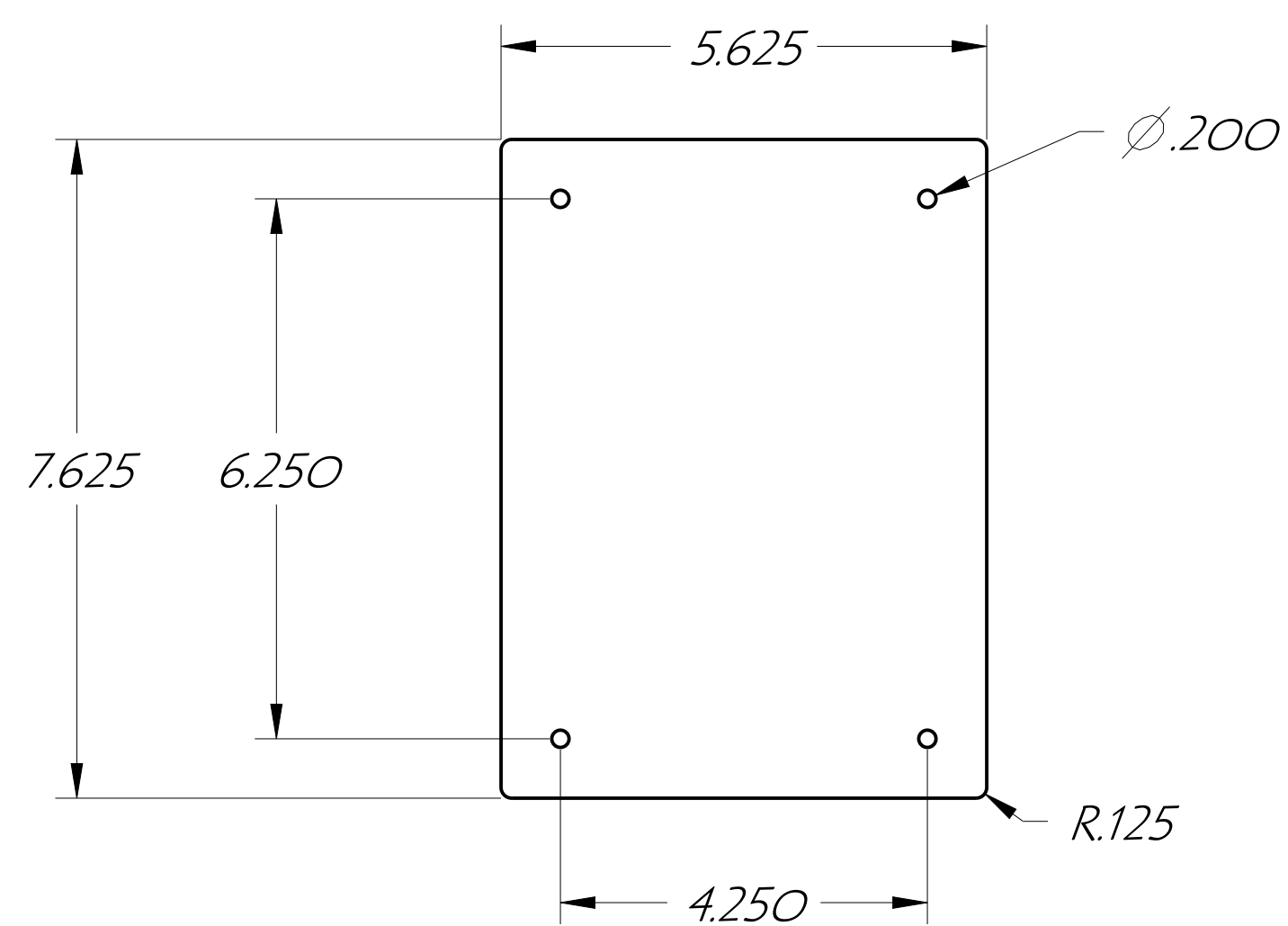
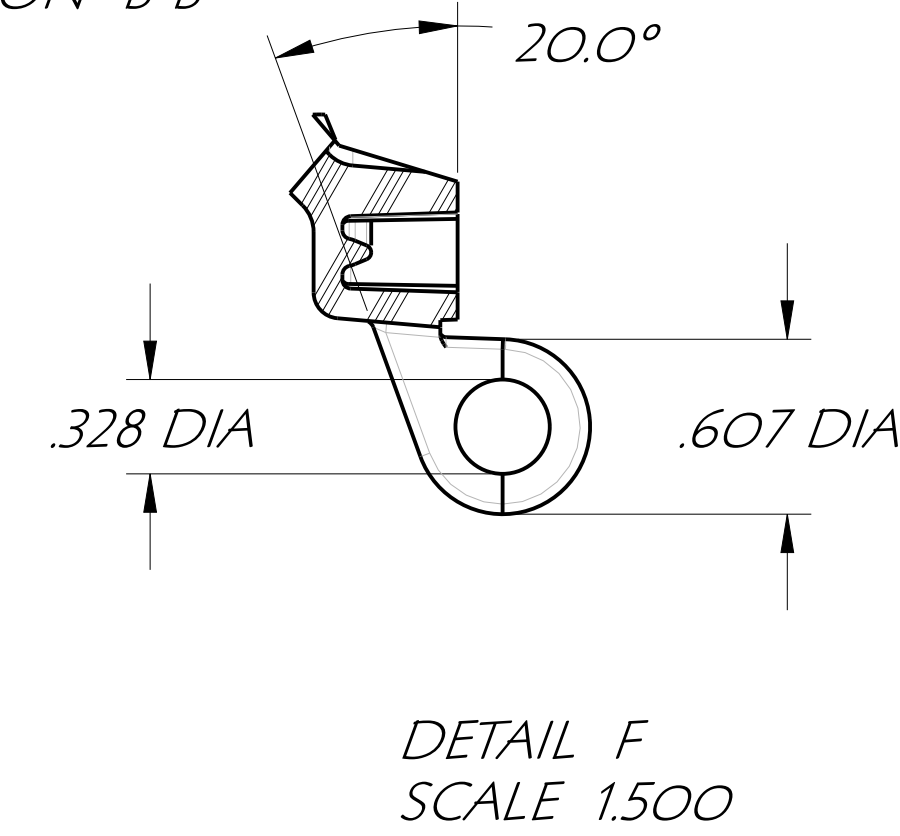
DES.	C.R.W.	DRN.	C.R.W.	CHKD.
APP.	DATE	10/16/07	SCALE	
TOLERANCES:		2 PLACE DEC.	±.010	FRAC.
		3 PLACE DEC.	±.005	±1/64
		4 PLACE DEC.	±.0005	
UNLESS OTHERWISE SHOWN				

PART NAME		ENCLOSURE & LID	PART NO.	CUSTOMER
TOOL DESC.		SINGLE CAVITY INJECTION MOLD	SHRINK	PART MATL POLYCARBONATE
			.006/IN.	SHEET OF





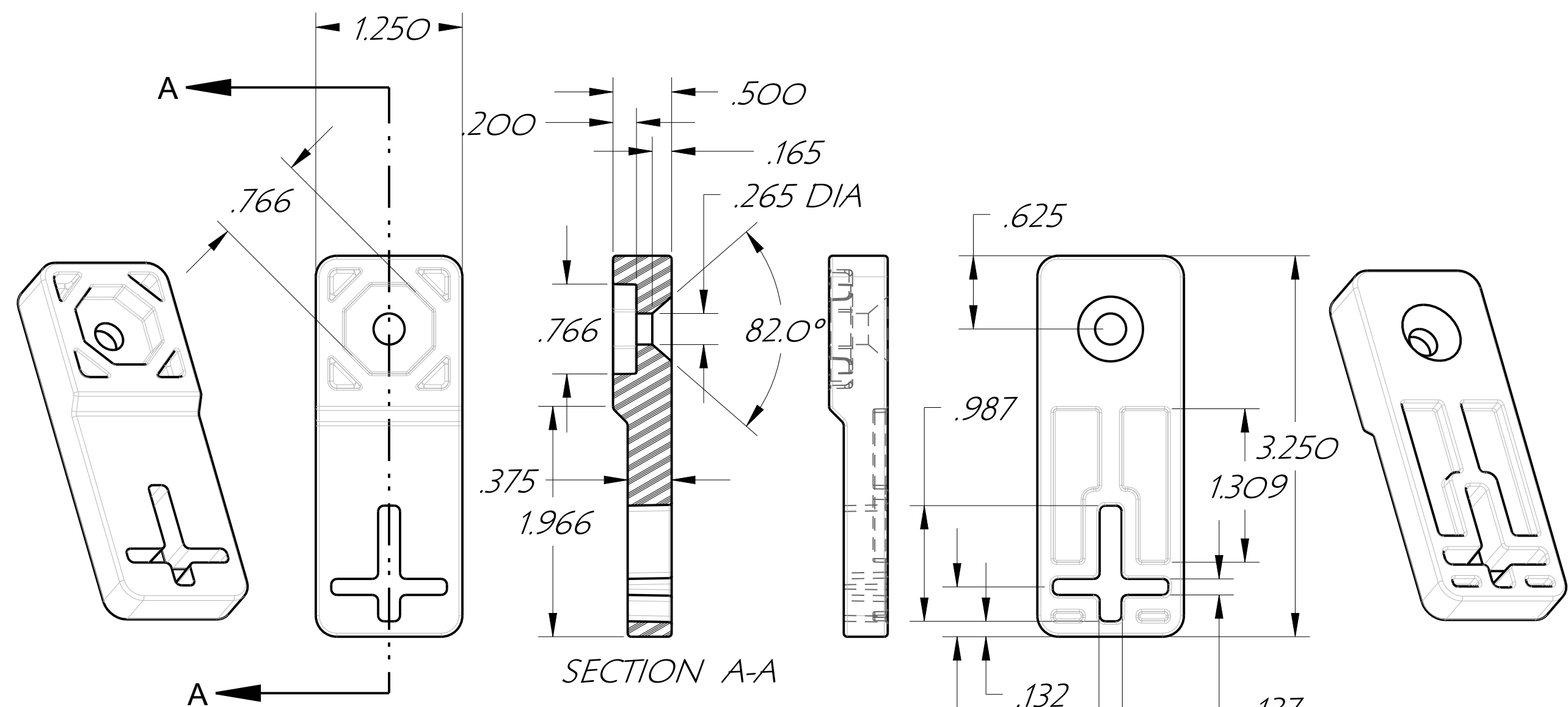
8 X 6 LID



SUB PANEL OR SWING PANEL

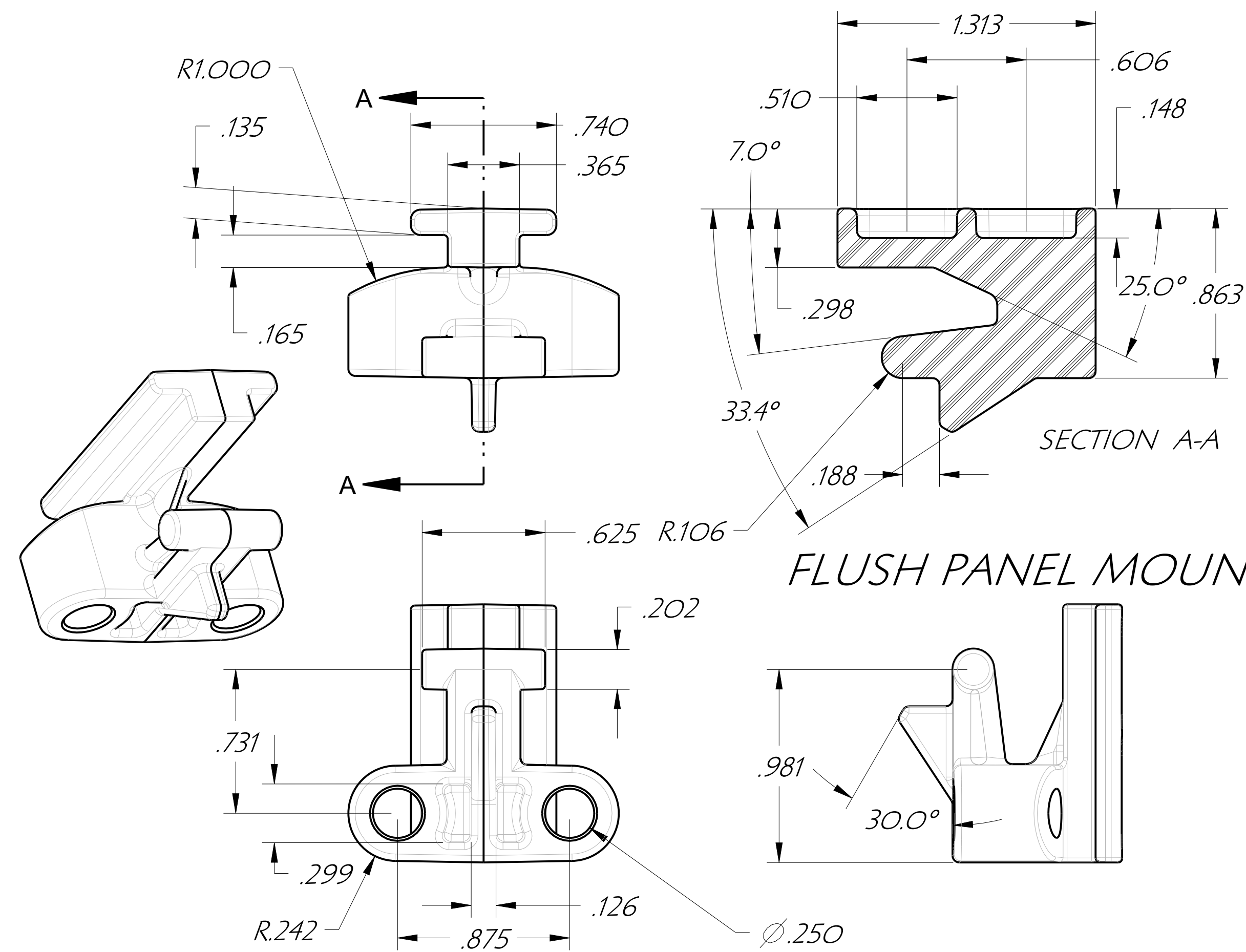
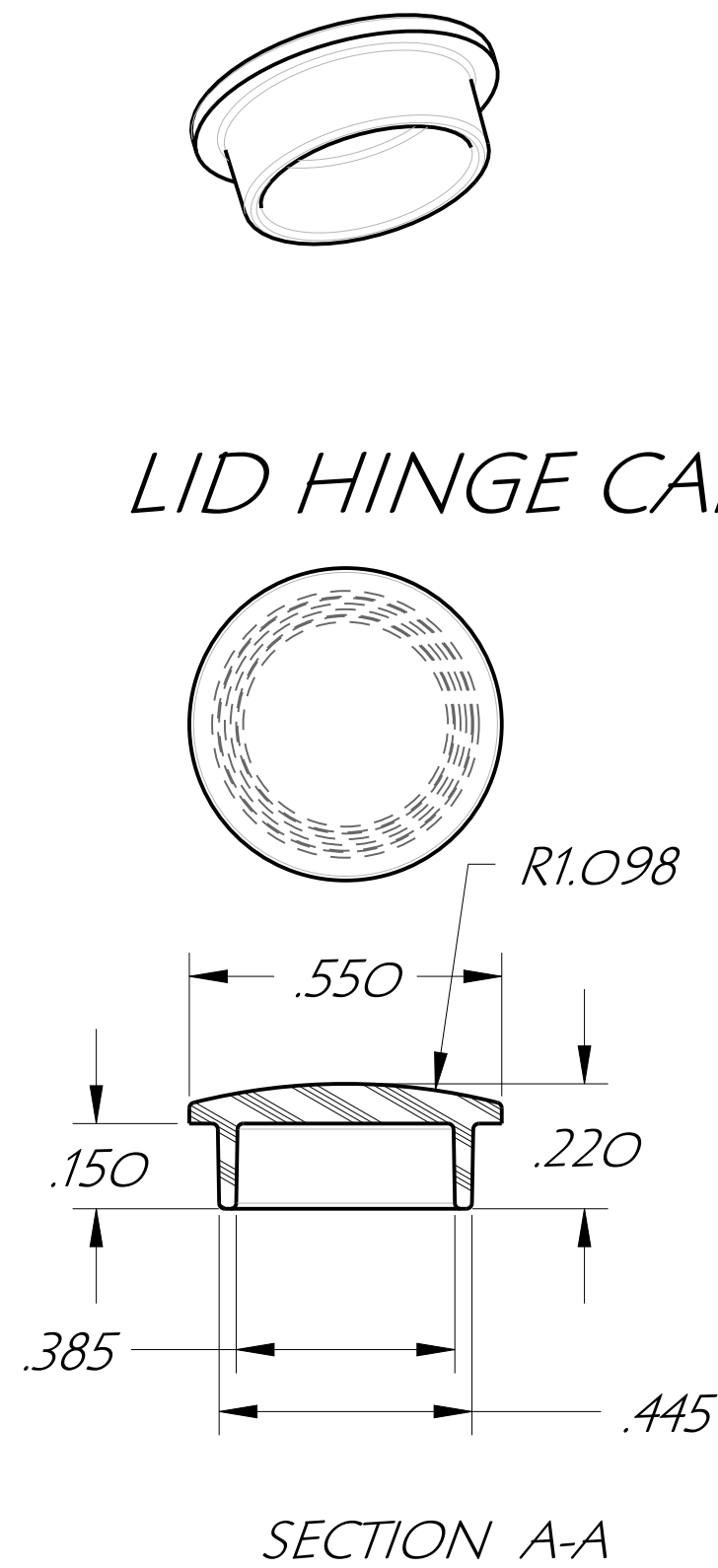
DES. C.R.W.	DRN. C.R.W.	CHKD.	CUSTOMER	
APP. DATE 10/16/07	SCALE		PART NAME ENCLOSURE & LID	PART NO.
TOLERANCES:	2 PLACE DEC. ±.010	FRAC.	PART MATL POLYCARBONATE	
UNLESS OTHERWISE SHOWN	3 PLACE DEC. ±.005	±.164	TOOL DESC. SINGLE CAVITY INJECTION MOLD	SHRINK .006/IN.
	4 PLACE DEC. ±.0005			SHEET OF



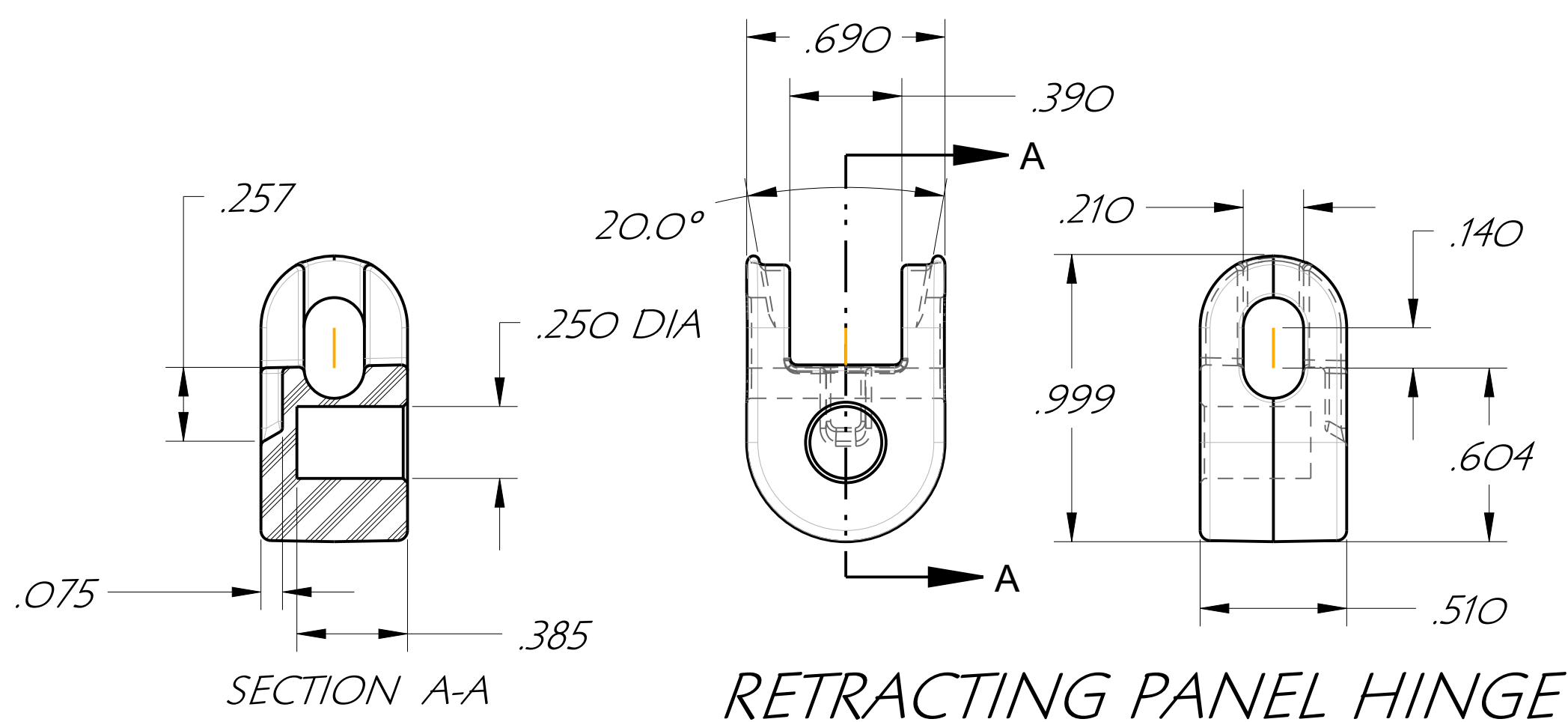


ADJUSTABLE FOOT MOUNT

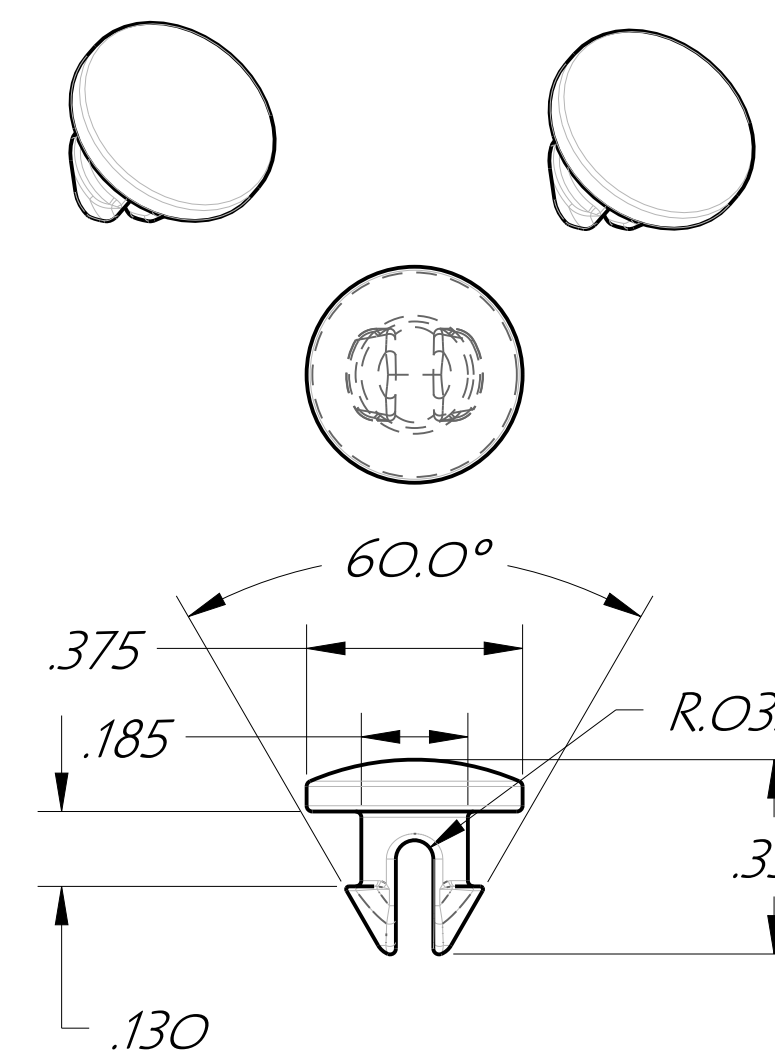
LID HINGE CAP



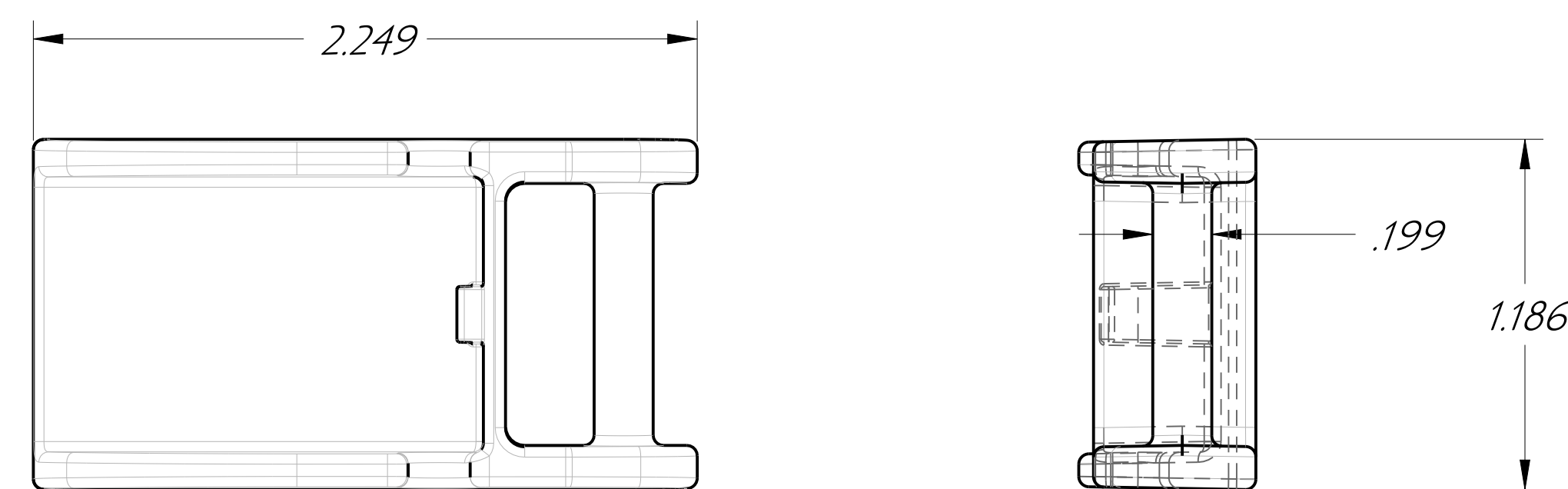
FLUSH PANEL MOUNT



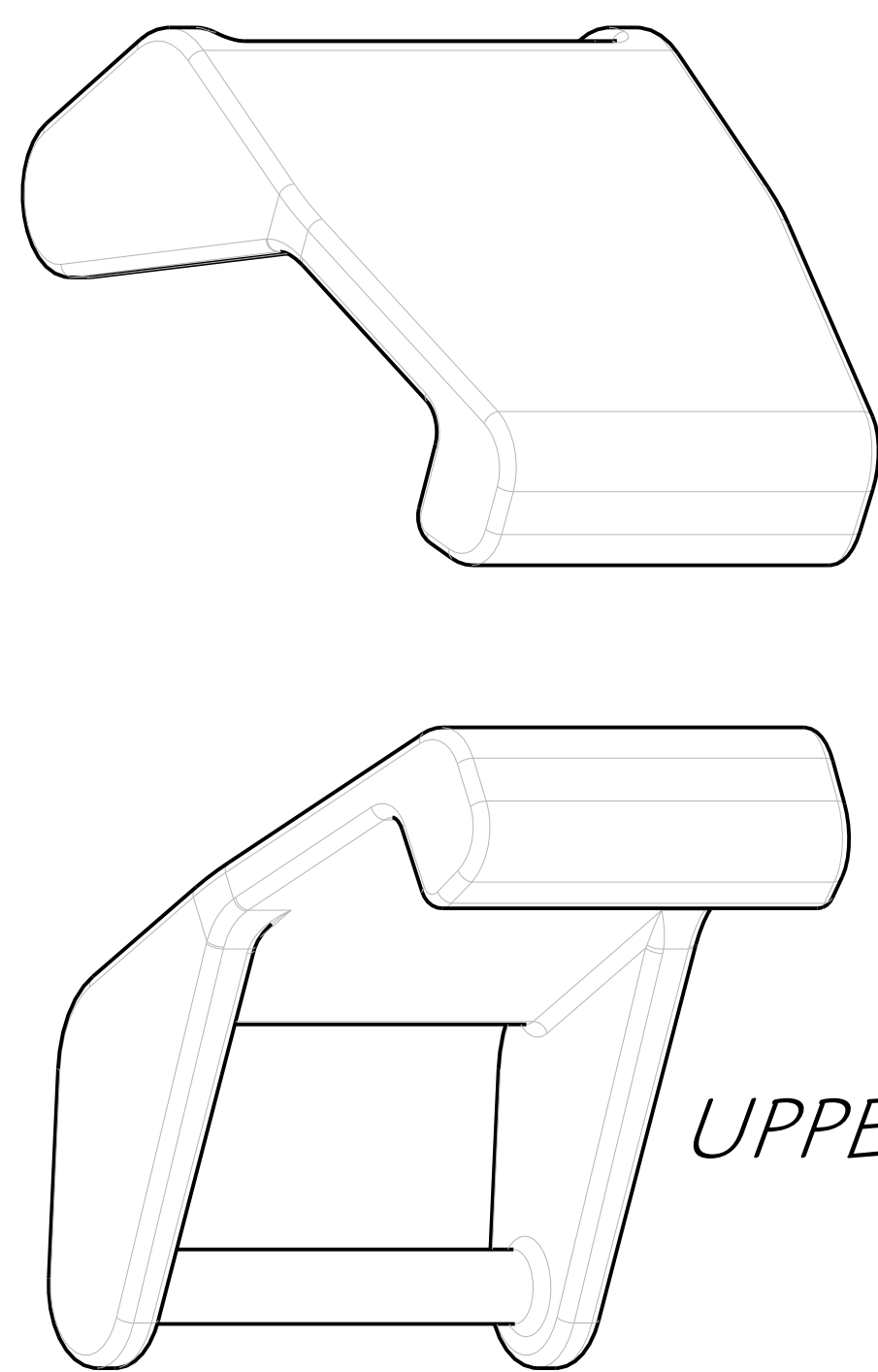
RETRACTING PANEL HINGE



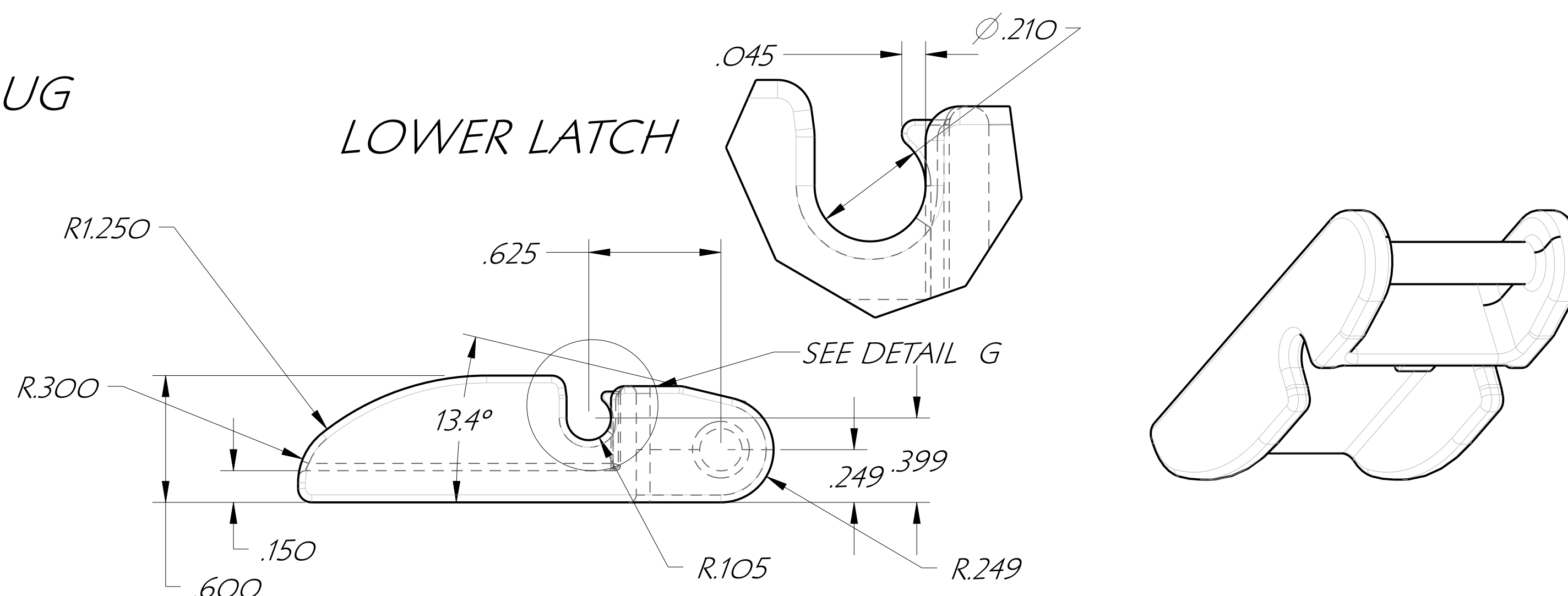
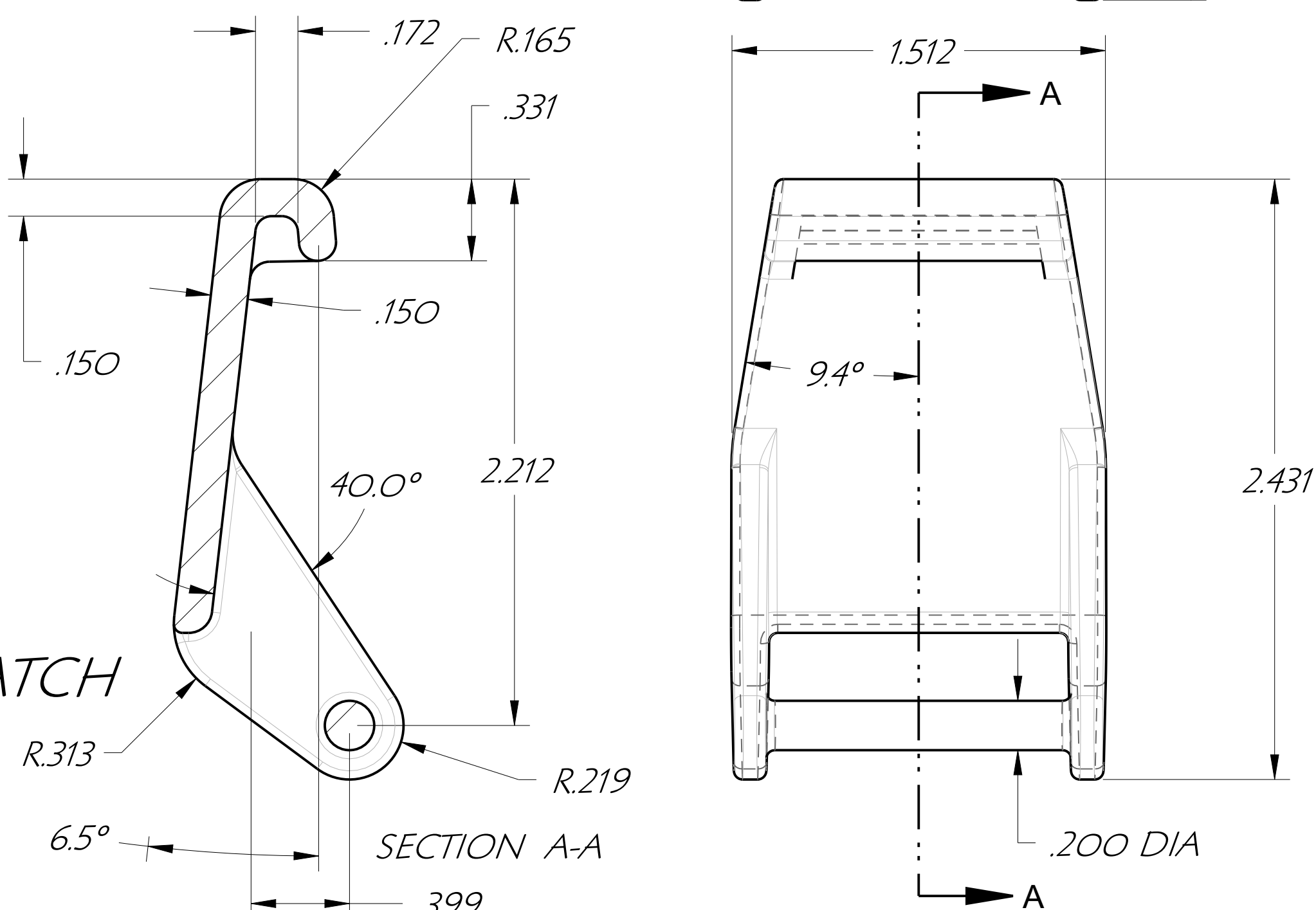
PLUG



LOWER LATCH



UPPER LATCH



DES. C.R.W.	DRN. C.R.W.	CHKD.							
APP. DATE 10/16/07	SCALE								
TOLERANCES:		2 PLACE DEC. ±.010	FRAC.						
UNLESS OTHERWISE SHOWN		3 PLACE DEC. ±.005	±.164						
		4 PLACE DEC. ±.0005							
PART NAME ENCLOSURE & LID							PART NO.	CUSTOMER	
TOOL DESC. SINGLE CAVITY INJECTION MOLD								PART MATL POLYCARBONATE	
							SHRINK	.006/IN.	SHEET OF