

PresencePLUS ProTM Vision Sensor

Easy system to set up and operate:

- Use PC for simple point-and-click step-by-step setup
- PC not required for operation, live video built in
- Inspections are stored in the system

Perform multiple inspections simultaneously:

- Nine full-function vision inspection tools
- Not dependent on product alignment or orientation

Ethernet & flexible I/O

- Communicate measurement, location, and system process control data
- Up to six configurable inputs & outputs
- Easy selection of stored inspections

**Full-featured
vision sensing
at the touch
of a Button!**



PresencePlus ProTM Inspection Tools:



Locate



Pattern Find



Grey Scale



Blob



Edge



Object



Pattern Count

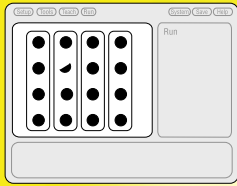


Measure

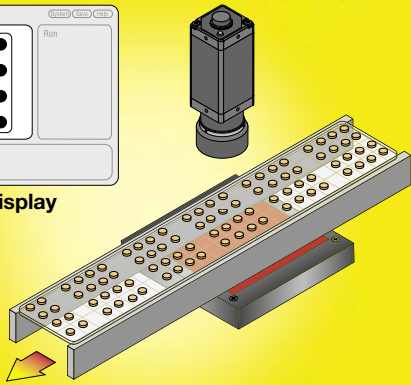


Test

PresencePLUS_{Pro}



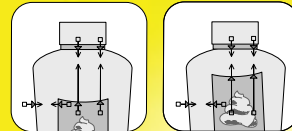
PC Display



Tablet Package Verification

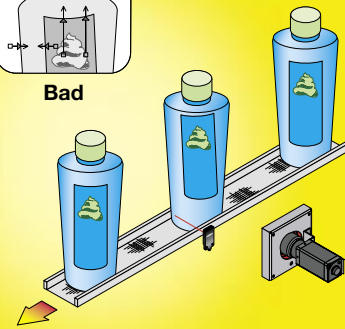
PresencePLUS_{Pro} verifies a tablet is present in each blister, and that no broken tablets or foreign material are in the package.

PresencePLUS_{Pro}



Good

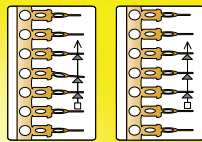
Bad



Label positioning

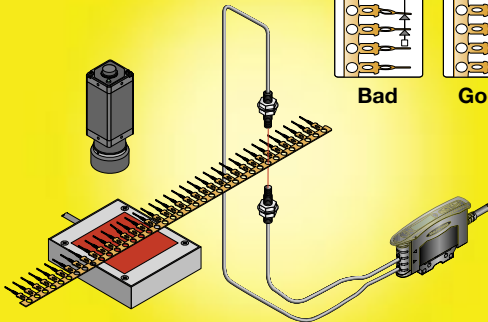
PresencePLUS_{Pro} verifies the correct label placement on a bottle.

PresencePLUS_{Pro}



Bad

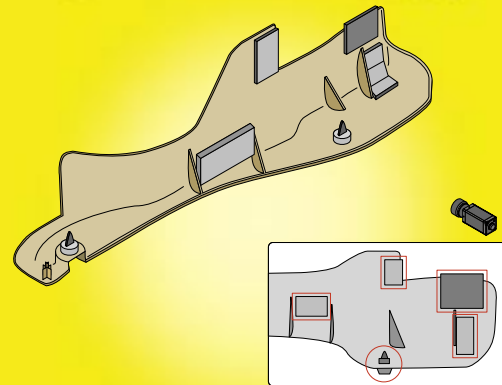
Good



GAP (PITCH) Measurement

PresencePLUS_{Pro} inspects stamped metal pins for critical flaws.

PresencePLUS_{Pro}



Multiple Component Location

PresencePLUS_{Pro} verifies the presence and location of foam padding and plastic nuts on an automobile dashboard trim piece.

Banner Engineering offers the industry a highly complete and integrated line of photoelectric sensors, ultrasonic sensors, machine safety products, measurement & inspection products and vision sensors.

Banner Engineering is a US based company with subsidiaries around the world for global sales and support.

Banner Engineering Europe
Koning Albert 1 laan, 50
1780 Wemmel • Belgium
Phone: +32 2 456 07 80
Fax: +32 2 456 07 89
e-mail: mail@bannereurope.com
www.bannereurope.com

