

가

(1 PNP 1 NPN)

Laser Expert™

가 Q3X

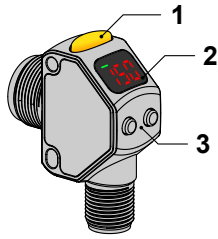
www.bannerengineering.com

p/n 181485

가



가 가 가 가



1:

1. ()
- 2.
- 3.



2:

1. (STB =)
2.
 - DYN = ()
 - WND = ()

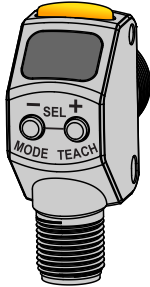
3 7 (NSS) NSS NSS
 . NSS 0 ~ 990 0 ~ 9.9 . NSS . NSS 999 가
 가

(2 () 100 (1.0)

가 100 100

- — ()
- — ()
- (STB) —
- —
- —
- —

- (DYN WND) —2 (2)
- DYN / WND —
- DYN —
- WND — 100



(-)(; MODE) (+)(; TEACH)
(4) ()

(-)(MODE)

- : (-)(MODE) 가 (-)(MODE)
- : 2 (-)(MODE)
- : (-)(MODE)
- : (-)(MODE)

(+)(TEACH)

- 가: (+)(TEACH) 가 (+)(TEACH)
- (TEACH) : (+)(TEACH) 2 (2)
- : (+)(TEACH)
- : (+)(TEACH) 가

(-)(MODE) (+)(TEACH)

- : (-)(MODE) (+)(TEACH)
- 가 : (-)(MODE) (+)(TEACH) 2



- - 2
- 가
-
-



2

가 가 2 400 nm ~ 700 nm 가 가

(400 ~ 700 nm)

()

0.25

가

COMPLIES WITH 21 CFR 1040.10 AND 1040.11 EXCEPT FOR DEVIATIONS PURSUANT TO LASER NOTICE No. 50, DATED JUNE 24, 2007.
 BANNER ENGINEERING CORP.
 9714 10TH AVENUE NORTH
 MINNEAPOLIS, MN 55441

Q3X SERIES



LASER LIGHT
 DO NOT STARE INTO BEAM
 CLASS 2 LASER PRODUCT

COMPLIES WITH IEC 60825-1:2007

: 655 nm
 : < 0.42 mW
 : 5 μs

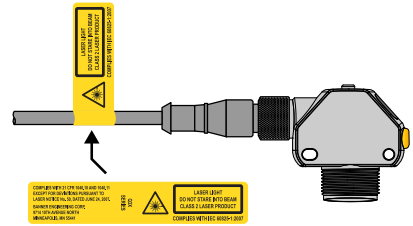
Q3X



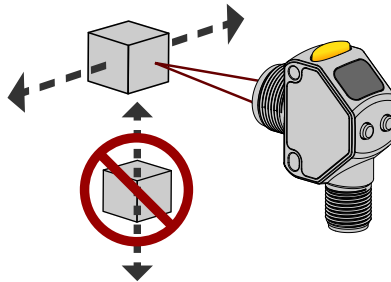
: 가

- 1.
- 2.
- 3.

Q3X

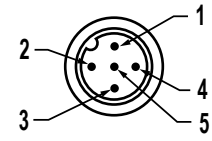
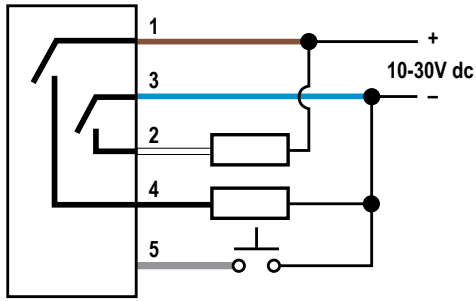


3:



4:

- 1.
2. ()
- 3.
4. ()



- 1 =
- 2 =
- 3 =
- 4 =
- 5 =

: _____

: _____ 가 ()

70% (stray light)

()

1. MODE 2

2. () 가

3. ()

4. () 가

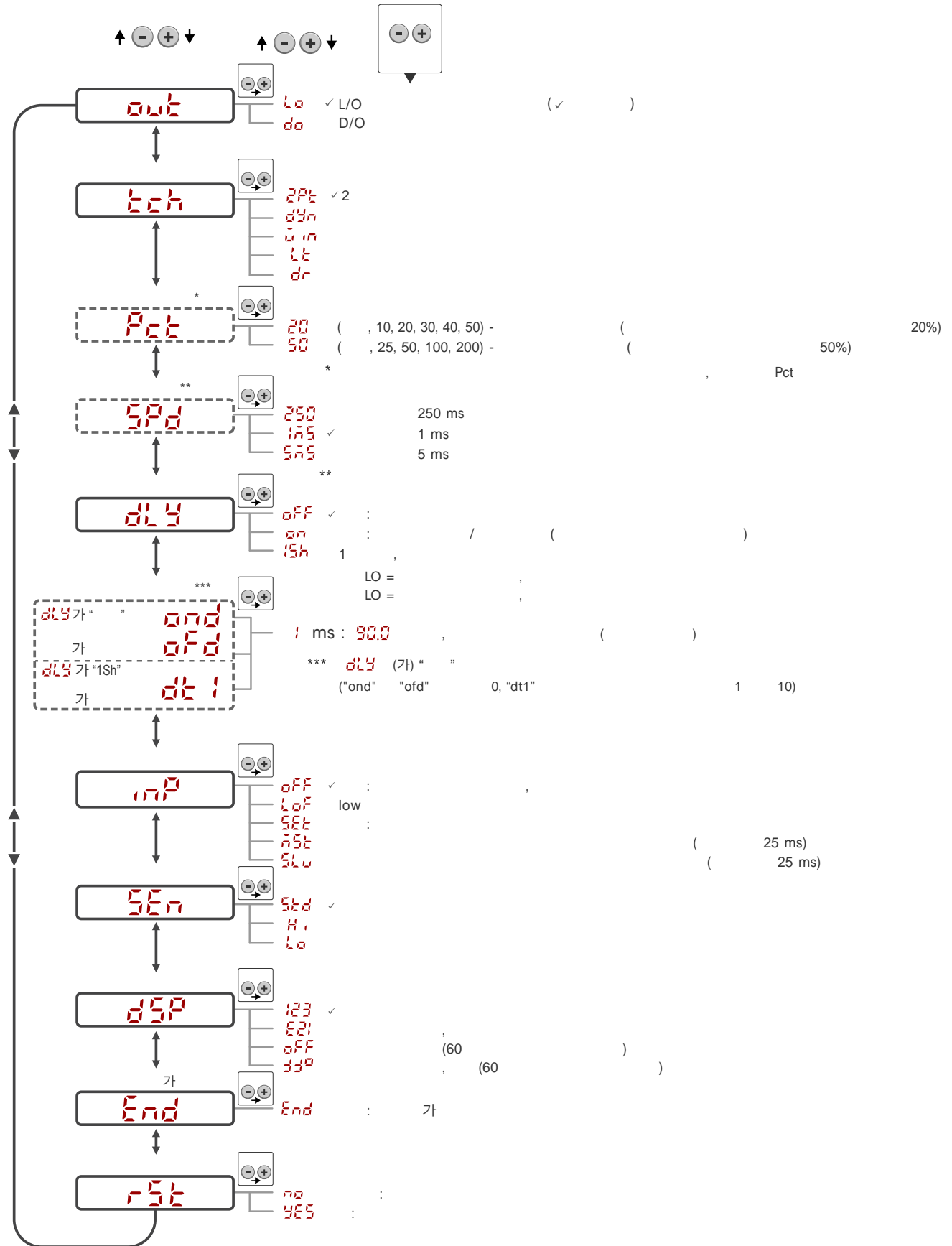
5.

• ()

• () 2



() 2 가 가 End () ()



Q3X

2

1. TEACH 2

가

2.

3. TEACH

가

4

5

:

4.

5. TEACH

가

가

• 2 (2P) —

• (2P) —

• (2P) —

• (2P) —

• (2P) —

⊖ ⊕

가

1.

⊖

⊕

()

2.

⊖

⊕

가

⊖

⊕

가

.1

가

가

⊕ ()

⊖ ()

가 2 , 655 nm

(Vcc)
10 ~ 30 V dc

: < 675 mW
: < 28 mA @ 24 V dc

300 mm (11.81 in)

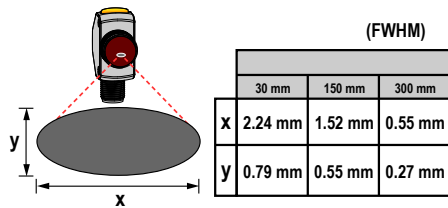
(1 PNP 1 NPN)

NPN : < 10 μ A
: < 200 mV @ 10 mA < 1.0 V @ 100 mA
mA
PNP : < 1 V @ 10 mA < 2.0 V @ 100 mA

가 : 0 ~ Vcc
Low ((sinking)): Low < 2.0 V
@ 1 mA

(transient)

60 μ s



가 :

- 250 —250 μ s
- 175 —1 ms
- 575 —5 ms

가

1 s

> 5000 lux

: 1 N·m (9 in-lbs)
(Nose) : 10 N·m (88 in-lbs)

5 M12

:
:
: PMMA
:

: 316

MIL-STD-202G, Method 201A (10 ~ 60 Hz, 0.06 in (1.52 mm), X, Y, Z 2),

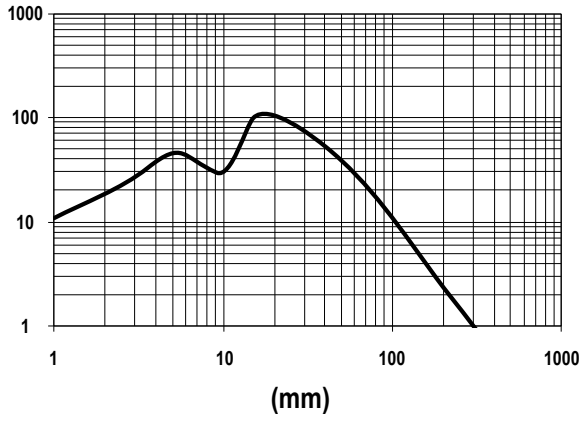
MIL-STD-202G, Method 213B, Condition I (X, Y, Z 100G 6x , 18),

IP67 IEC60529
IP68 IEC60529
IP69K DIN40050-9

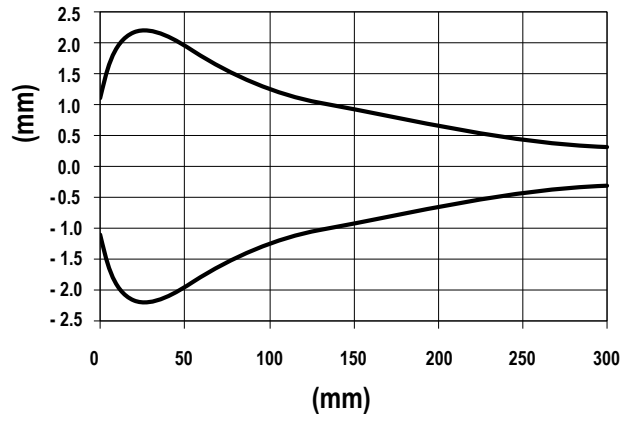
: -10 °C ~ +55 °C (+14 °F ~ +131 °F)
: 35% ~ 95%

:
-25 °C ~ +75 °C (-13 °F ~ +167 °F)





6:



7:



: 가 1.5
0.75

Banner Engineering Corp.

Banner Engineering Corp.

1

가

Banner Engineering Corp.
Banner

()

Banner Engineering Corp.

BANNER ENGINEERING CORP.
가

Banner Engineering Corp.

Banner Engineering Corp.