

SureCross DX80 FlexPower Node



Configurable Node with discrete inputs and discrete NMOS outputs



The SureCross® wireless system is a radio frequency network with integrated I/O that can operate in most environments and eliminate the need for wiring runs. Wireless networks are formed around a Gateway, which acts as the wireless network master device, and one or more Nodes.

- Wireless industrial I/O device with four selectable discrete inputs and four NMOS discrete outputs
- FlexPower® power options allows for +10 to 30V dc, solar, and battery power sources for low power applications.
- DIP switches for user configuration
- Two switch power outputs provide sensor actuation voltage of 3.6V dc (battery powered) or 4.3V dc (10 to 30V dc powered)
- Frequency Hopping Spread Spectrum (FHSS) technology and Time Division Multiple Access (TDMA) control architecture ensure reliable data delivery within the unlicensed Industrial, Scientific, and Medical (ISM) band
- Transceivers provide bidirectional communication between the Gateway and Node, including fully acknowledged data transmission
- Lost RF links are detected and relevant outputs set to user-defined conditions
- The DX80...C models are certified for use in Class I, Division 2, Group A, B, C, D; Zone 2 (Category 3G) Hazardous Locations when properly installed in accordance with the National Electrical Code, the Canadian Electrical Code, or applicable local codes/regulations (see Specifications)

For additional information, updated documentation, and accessories, refer to Banner Engineering's website, www.bannerengineering.com/surecross.

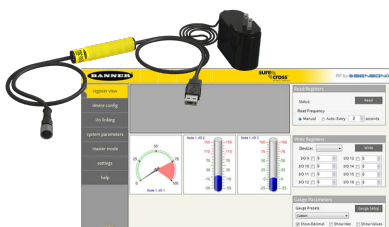
Models	Frequency	Environmental Rating	I/O
DX80N9X2S4N4	900 MHz ISM Band	IP67, NEMA 6	Inputs: Four selectable discrete Outputs: Four NMOS sinking discrete
DX80N2X2S4N4	2.4 GHz ISM Band		
DX80N9X2S4N4C	900 MHz ISM Band	IP20, NEMA 1 Class I, Division 2, Group A, B, C, D Hazardous Locations (see Specifications)	
DX80N2X2S4N4C	2.4 GHz ISM Band		

Internal antenna models are also available. For more information, contact your local Banner Engineering Corp. representative.



WARNING: Not To Be Used for Personnel Protection
 Never use this device as a sensing device for personnel protection. Doing so could lead to serious injury or death. This device does not include the self-checking redundant circuitry necessary to allow its use in personnel safety applications. A sensor failure or malfunction can cause either an energized or de-energized sensor output condition.

SureCross User Configuration Tool



The User Configuration Tool (UCT) offers an easy way to link I/O points in your wireless network, view I/O register values graphically, and set system communication parameters when a host system is not part of the wireless network.

The UCT requires a special USB to RS-485 (model number BWA-UCT-900 for 1 Watt radios, BWA-HW-006 can be used for all other radios) converter cable to pass information between your computer and the Gateway. Download the most recent revisions of the UCT software from Banner Engineering's website: <http://www.bannerengineering.com/wireless>.



Setting Up Your Wireless Network

To set up and install your wireless network, follow these steps.

Disconnect the power from your SureCross devices.

1. Configure the DIP switches of all devices.
2. Connect the sensors to the SureCross devices.
3. Apply power to all devices.
On the Gateway, LED 1 is solid green. On the Node, LED 2 flashes red to indicate there is no radio link to the Gateway.
4. Form the wireless network by binding the Nodes to the Gateway. If the binding instructions are not included in the datasheet, refer to the product manual for binding instructions.
5. Observe the LED behavior to verify the devices are communicating with each other.
On the Gateway, LED 1 is solid green. On the Node, LED 1 flashes green to indicate it is communicating with the Gateway.
6. Conduct a site survey between the Gateway and Nodes. If the site survey instructions are not included in this datasheet, refer to the product manual for detailed site survey instructions.
7. Install your wireless sensor network components. If installation instructions are not included in this datasheet, refer to the product manual for detailed installation instructions.

For additional information, including installation and setup, weatherproofing, device menu maps, troubleshooting, and a list of accessories, refer to one of the following product manuals.

- SureCross Quick Start Guide: Banner part number [128185](#)
- SureCross Wireless I/O Network Manual: [132607](#)
- Web Configurator Manual (used with "Pro" and DX83 models): [134421](#)
- Host Configuration Manual [132114](#)

Configuring the DIP Switches

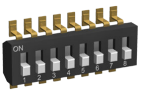
Before making any changes to the DIP switch positions, disconnect the power. DIP switch changes will not be recognized if power isn't cycled to the device.

For parameters not set via DIP switches, use the User Configuration Tool (UCT) to make configuration changes. For parameters set using the DIP switches, the DIP switch positions override any changes made using the User Configuration Tool.

Accessing the Internal DIP Switches

To access the internal DIP switches, follow these steps:

1. Unscrew the four screws that mount the cover to the bottom housing.
2. Remove the cover from the housing without damaging the ribbon cable or the pins the cable plugs into.
3. Gently unplug the ribbon cable from the board mounted into the bottom housing.
4. Remove the black cover plate from the bottom of the device's cover.
The DIP switches are located behind the rotary dials.



After making the necessary changes to the DIP switches, place the black cover plate back into position and gently push into place. Plug the ribbon cable in after verifying that the blocked hole lines up with the missing pin. Mount the cover back onto the housing.

DIP Switch Settings

	Switches							
Device Settings	1	2	3	4	5	6	7	8
Rotary dial address mode	OFF*							
Extended address mode	ON							

Switches								
Device Settings	1	2	3	4	5	6	7	8
Modbus or UCT configured (overrides DIP switches 3-8)		OFF*						
DIP switch configured		ON						
Inputs sinking (NPN)			OFF*					
Inputs sourcing (PNP)			ON					
Link loss output: zero				OFF*	OFF*			
Link loss output: one				OFF	ON			
Link loss output: hold last state				ON	OFF			
Link loss output: user configuration				ON	ON			

* Default configuration

Address Mode

The SureCross wireless devices may use one of two types of addressing modes: rotary dial addressing or extended addressing. In **rotary dial** address mode, the left rotary dial establishes the network ID and the right rotary dial sets the device ID. The wireless network is restricted to a maximum of 16 devices.

Extended address mode uses a security code to "bind" Nodes to a specific Gateway. Bound Nodes can only send and receive information from the Gateway to which they are bound. In extended address mode, wireless networks may contain up to 48 radio devices. For more information on extended address mode, refer to the SureCross™ Wireless I/O Network product manual.

The device ships in rotary dial address mode by default, with the DIP switch in the OFF position. To use extended address mode, change the DIP switch to the ON position.

Discrete Input Type

Select the type of discrete input sensors to use with this device: sourcing (PNP) sensors or sinking (NPN) sensors.

Link Loss Outputs

The SureCross DX80 wireless devices use a deterministic radio link time-out method to address RF link interruption or failure. When a radio link fails, all pertinent wired outputs are sent to defined states until the link is recovered, ensuring that disruptions in the communications link result in predictable system behavior.

Following a radio link time-out, all outputs linked to the Node in question are set to de-energize (discrete outputs to zero, analog outputs to 0 mA or 4 mA), energize (discrete outputs to one, analog outputs to 20 mA), or to hold the last stable state/value. Use the DIP switches to select the link loss output state.

Modbus/User Configuration Tool (UCT) or DIP Switch Configured

In Modbus/UCT Configured mode, the device parameters are changed using the User Configuration Tool (UCT) or a Modbus command. All DIP switch positions are ignored. In DIP Switch Configured mode, use the DIP switches to configure the parameters listed in the table.

Wiring Your SureCross® Device

Use the following wiring diagrams to first wire the sensors and then apply power to the SureCross devices.

5-pin Euro-Style Wiring (Nodes)

Wiring the 5-pin Euro-style connector depends on the model and power requirements of the device. Connecting dc power to the communication pins will cause permanent damage. For FlexPower devices, do not apply more than 5.5V to the gray wire.

	Wire No.	Wire Color	10 to 30V dc Powered Nodes	Battery Powered Nodes
	1	Brown	10 to 30V dc	
	2	White		
	3	Blue	dc common (GND)	dc common (GND)
	4	Black		
	5	Gray		3.6 to 5.5V dc

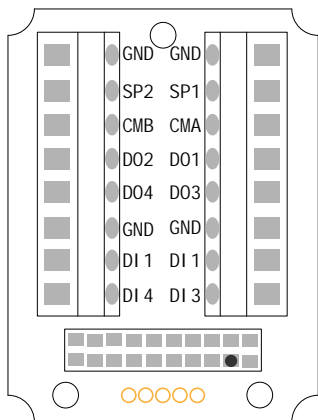
DX80...C Wiring

Wiring power to the DX80...C models varies depending on the power requirements of the model. Connecting dc power to the communication pins (Tx/Rx) causes permanent damage. For FlexPower devices, do not apply more than 5.5V to the B+ terminal.

Terminal Label	Gateway, DX85	10 to 30V dc Powered Nodes	Battery Powered Nodes
V+	10 to 30V dc	10 to 30V dc	
Tx/+	RS485 / D1 / B / +		
V-	dc common (GND)	dc common (GND)	dc common (GND)
Rx/-	RS485 / D0 / A / -		
B+			3.6 to 5.5V dc

Terminal Block (IP67 Housing)

For the IP67 housing models, PWR in the wiring diagram refers to SP1 or SP2 on the wiring board.



CMx. Serial interface connection. For non-serial interface models, do not make any wiring connections to these terminals.

DIx. Discrete IN x.

DOx. Discrete OUT x.

GND. Ground/dc common connection.

SPx. Switch Power. Provides variable power sources for external devices.

Ignore alternate labeling referring to other models that use this board.

Terminal Block (IP20 Housing)

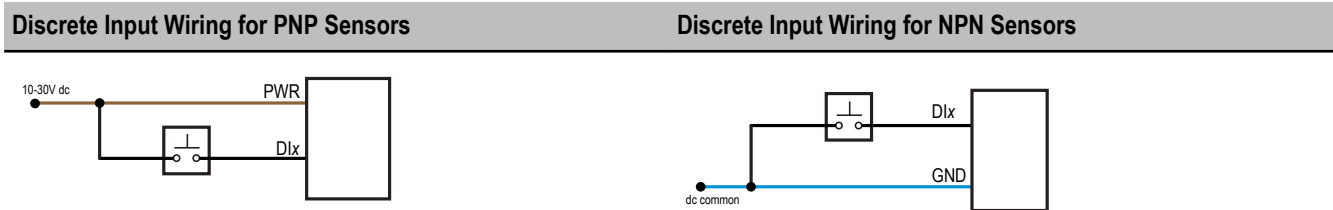
For the DX8x...C models, PWR in the wiring diagram refers to V+ on the wiring board and GND in the wiring diagram refers to V- on the wiring board. Ignore alternate labeling referring to other models that use this board.

FlexPower Discrete Models	FlexPower Serial Interface Models	FlexPower Counter Models
B+. 3.6 to 5.5V dc (for battery powered models only).	B+. 3.6 to 5.5V dc (for battery powered models only).	B+. 3.6 to 5.5V dc (for battery powered models only).
DIx. Discrete IN x.	CMx. Serial interface connection. For non-serial interface models, do not make any wiring connections to these terminals.	CIx. Counter IN x.
DOx. Discrete OUT x.	DIx. Discrete IN x.	DIx. Discrete IN x.
RX/-. Serial comms line for Gateways and DX85s only. No connection for Nodes.	DOx. Discrete OUT x.	DOx. Discrete OUT x.
		RX/-. Serial comms line for Gateways and DX85s only. No connection for Nodes.

FlexPower Discrete Models	FlexPower Serial Interface Models	FlexPower Counter Models
SPx. Switch Power. Provides variable power sources for external devices.	RX/-. Serial comms line for Gateways and DX85s only. No connection for Nodes.	SPx. Switch Power. Provides variable power sources for external devices.
TX/+. Serial comms line for Gateways and DX85s only. No connection for Nodes	SPx. Switch Power. Provides variable power sources for external devices.	TX/+. Serial comms line for Gateways and DX85s only. No connection for Nodes
V+. Power, 10 to 30V dc power connection.	TX/+. Serial comms line for Gateways and DX85s only. No connection for Nodes	V+. Power, 10 to 30V dc power connection.
V-. Ground/dc common connection.	V+. Power, 10 to 30V dc power connection.	V-. Ground/dc common connection.
	V-. Ground/dc common connection.	

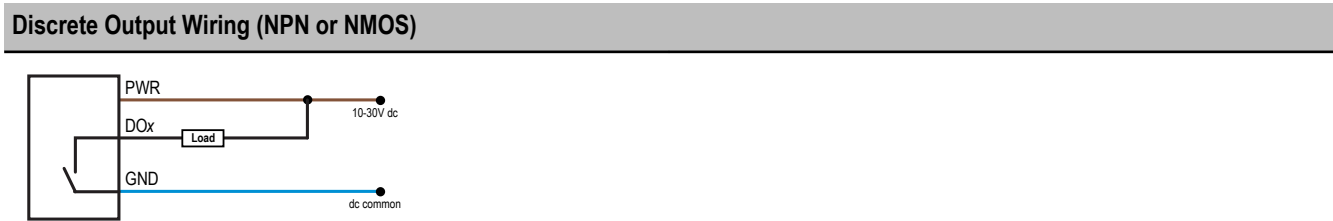
Wiring Diagrams for Discrete Inputs

Connecting dc power to the communication pins will cause permanent damage. For the DX8x...C models, PWR in the wiring diagram refers to V+ on the wiring board and GND in the wiring diagram refers to V- on the wiring board.



Wiring Diagrams for Discrete Outputs

Connecting dc power to the communication pins will cause permanent damage. For the DX8x...C models, PWR in the wiring diagram refers to V+ on the wiring board and GND in the wiring diagram refers to V- on the wiring board.



LED Behavior for the Nodes

After powering up and binding the Gateway and its Nodes, verify all devices are communicating properly. A Node will not sample its inputs until it is communicating with its Gateway. When testing communication between the Gateway and Node, all radios and antennas should be at least two meters apart or the communications may fail.

LED 1	LED 2	Node Status
(flashing green)		Radio Link Ok
(flashing red)	(flashing red)	Device Error
	(flashing red, 1 per 3 sec)	No Radio Link

Modbus Register Table

I/O #	Modbus Holding Register		I/O Type	I/O Range		Holding Register Representation		Terminal Block Labels
	Gateway	Any Node		Min. Value	Max. Value	Min. (Dec.)	Max. (Dec.)	
1	1	1 + (Node# × 16)	Discrete IN 1	0	1	0	1	DI1
2	2	2 + (Node# × 16)	Discrete IN 2	0	1	0	1	DI2
3	3	3 + (Node# × 16)	Discrete IN 3	0	1	0	1	DI3
4	4	4 + (Node# × 16)	Discrete IN 4	0	1	0	1	DI4
		...						
7	7	7 + (Node# × 16)	Reserved					
8	8	8 + (Node# × 16)	Device Message					
9	9	9 + (Node# × 16)	Discrete OUT 1	0	1	0	1	DO1
10	10	10 + (Node# × 16)	Discrete OUT 2	0	1	0	1	DO2
11	11	11 + (Node# × 16)	Discrete OUT 3	0	1	0	1	DO3
12	12	12 + (Node# × 16)	Discrete OUT 4	0	1	0	1	DO4
		...						
15	15	15 + (Node# × 16)	Control Message					
16	16	16 + (Node# × 16)	Reserved					

Specifications

Radio and General

Range

900 MHz: Up to 4.8 kilometers (3 miles)
2.4 GHz: Up to 3.2 kilometers (2 miles)

Transmit Power

900 MHz: 21 dBm (150 mW) conducted
2.4 GHz: 18 dBm (65 mW) conducted, less than or equal to 20 dBm (100 mW) EIRP

900 MHz Compliance (150 mW Radios)

FCC ID TGUDX80 - This device complies with FCC Part 15, Subpart C, 15.247
IC: 7044A-DX8009

2.4 GHz Compliance

FCC ID UE300DX80-2400 - This device complies with FCC Part 15, Subpart C, 15.247
ETSI/EN: In accordance with EN 300 328: V1.7.1 (2006-05)
IC: 7044A-DX8024

Spread Spectrum Technology

FHSS (Frequency Hopping Spread Spectrum)

Link Timeout

Gateway: Configurable via User Configuration Tool (UCT) software
Node: Defined by Gateway

Power

Requirements: +10 to 30V dc or +3.6 to 5.5V dc low power option (Outside the USA: +12 to 24V dc, ±10% or +3.6 to 5.5V dc low power option)
Consumption: Less than 1.4 W (60 mA) at 24V dc

Housing

Polycarbonate housing and rotary dial cover; polyester labels; EDPM rubber cover gasket; nitrile rubber, non-sulphur cured button covers
Weight: 0.26 kg (0.57 lbs)
Mounting: #10 or M5 (SS M5 hardware included)
Max. Tightening Torque: 0.56 N·m (5 lbf·in)

Antenna Connection

Ext. Reverse Polarity SMA, 50 Ohms
Max Tightening Torque: 0.45 N·m (4 lbf·in)

Interface

Indicators: Two bi-color LEDs
Buttons: Two
Display: Six character LCD

Wiring Access

Four PG-7, One 1/2-inch NPT, One 5-pin Euro-style male connector

For European applications, power the DX80 from a Limited Power Source as defined in EN 60950-1.

Radio and General

Radio range is with the 2 dB antenna that ships with the product. High-gain antennas are available, but the range depends on the environment and line of sight. To determine the range of your wireless network, perform a Site Survey.

Inputs and Outputs

Discrete Inputs

Rating: 3 mA max current at 30V dc
Sample Rate: 125 milliseconds
Report Rate: On change of state

Discrete Input ON Condition

PNP: Greater than 8V
NPN: Less than 0.7V

Discrete Input OFF Condition

PNP: Less than 5V
NPN: Greater than 2V or open

Discrete Outputs

Update Rate: 1 second
ON Condition: Less than 0.7V
OFF Condition: Open
Output State Following Timeout: OFF

Discrete Output Rating (NMOS)

Less than 10 mA max current at 30V dc
ON-State Saturation: Less than 0.7V at 20 mA

Switch Power Outputs (SP1 and SP2)

3.6V dc or 4.3V dc (constant power)

Environmental and Certifications

Ratings

DX80 models: IEC IP67; NEMA 6; (See UL section below for any applicable UL specifications)
DX80...C models: IEC IP20; NEMA 1 (In a suitable enclosure: Class I, Division 2, Group A, B, C, D; T4 -40 to 80 °C)

Operating Conditions

Operating Temperature: -40 to +85 °C (Electronics);
-20 to +80 °C (LCD)
Operating Humidity: 95% max. relative (non-condensing)
Radiated Immunity: 10 V/m, 80-2700 MHz
(EN61000-6-2)

Shock and Vibration

IEC 68-2-6 and IEC 68-2-7
Shock: 30g, 11 millisecond half sine wave, 18 shocks
Vibration: 0.5 mm p-p, 10 to 60 Hz

DX80...C (External Wiring Terminal Models)



is CSA: Class I, Division 2, Groups A, B, C, D
(Ex/A Ex nA II T4); Certificate: 1921239



LCIE/ATEX: Zone 2 (II 3G / Ex nA IIC); Certificate: LCIE 10 ATEX 1012 X



Refer to the [SureCross DX80 Wireless I/O Network Product Manual](#) (p/n 132607) for installation and waterproofing instructions. Operating the devices at the maximum operating conditions for extended periods can shorten the life of the device.

Included with Model

The following items ship with the DX80 radios.

- BWA-HW-002: DX80 Access Hardware Kit, containing four PG-7 plastic threaded plugs, four PG-7 nylon gland fittings, four PG-7 hex nuts, one 1/2-inch NPT plug, and one 1/2-inch nylon gland fitting. (Not included with IP20 DX80...C models)
- BWA-HW-001: Mounting Hardware Kit, containing four M5-0.8 x 25mm SS screws, four M5-0.8 x 16mm SS screws, four M5-0.8mm SS hex nuts, and four #8-32 x 3/4" SS bolts
- BWA-HW-003: PTFE tape
- BWA-902-C (900 MHz) or BWA-202-C (2.4 GHz): Antenna, 2 dBd Omni, Rubber Swivel RP-SMA Male. (Not included with Internal antenna models)
- Quick Start Guide (128185 for DX80 Gateways or 152653 for MultiHop models)
- MQDC1-506: 5-Euro (single ended) straight cable, 2m (Not included with FlexPower devices)
- BWA-HW-011: IP20 Screw Terminal Headers (2 pack) (Included only with the IP20 DX80...C models)

Warnings

Antenna Installations. Install and properly ground a qualified surge suppressor when installing a remote antenna system. Remote antenna configurations installed without surge suppressors invalidate the manufacturer's warranty. Keep the ground wire as short as possible and make all ground connections to a single-point ground system to ensure no ground loops are created. No surge suppressor can absorb all lightning strikes; do not touch the SureCross® device or any equipment connected to the SureCross device during a thunderstorm.

Exporting SureCross Radios. It is our intent to fully comply with all national and regional regulations regarding radio frequency emissions. **Customers who want to re-export this product to a country other than that to which it was sold must ensure the device is approved in the destination country.** A list of approved countries appears in the *Radio Certifications* section of the product manual. The SureCross wireless products were certified for use in these countries using the antenna that ships with the product. When using other antennas, verify you are not exceeding the transmit power levels allowed by local governing agencies. Consult with Banner Engineering Corp. if the destination country is not on this list.

Violating Warnings. The manufacturer does not take responsibility for the violation of any warning listed in this document. **Make no modifications to this product;** any modifications to this product not expressly approved by Banner Engineering could void the user's authority to operate the product. **All specifications published in this document are subject to change;** Banner reserves the right to modify product specifications or to update documentation at any time. For the most recent version of any documentation, refer to: www.bannerengineering.com. © 2006-2013 Banner Engineering Corp. All rights reserved.

Banner Engineering Corp Limited Warranty

Banner Engineering Corp. warrants its products to be free from defects in material and workmanship for one year following the date of shipment. Banner Engineering Corp. will repair or replace, free of charge, any product of its manufacture which, at the time it is returned to the factory, is found to have been defective during the warranty period. This warranty does not cover damage or liability for misuse, abuse, or the improper application or installation of the Banner product.

THIS LIMITED WARRANTY IS EXCLUSIVE AND IN LIEU OF ALL OTHER WARRANTIES WHETHER EXPRESS OR IMPLIED (INCLUDING, WITHOUT LIMITATION, ANY WARRANTY OF MERCHANTABILITY OR FITNESS FOR A PARTICULAR PURPOSE), AND WHETHER ARISING UNDER COURSE OF PERFORMANCE, COURSE OF DEALING OR TRADE USAGE.

This Warranty is exclusive and limited to repair or, at the discretion of Banner Engineering Corp., replacement. **IN NO EVENT SHALL BANNER ENGINEERING CORP. BE LIABLE TO BUYER OR ANY OTHER PERSON OR ENTITY FOR ANY EXTRA COSTS, EXPENSES, LOSSES, LOSS OF PROFITS, OR ANY INCIDENTAL, CONSEQUENTIAL OR SPECIAL DAMAGES RESULTING FROM ANY PRODUCT DEFECT OR FROM THE USE OR INABILITY TO USE THE PRODUCT, WHETHER ARISING IN CONTRACT OR WARRANTY, STATUTE, TORT, STRICT LIABILITY, NEGLIGENCE, OR OTHERWISE.**

Banner Engineering Corp. reserves the right to change, modify or improve the design of the product without assuming any obligations or liabilities relating to any product previously manufactured by Banner Engineering Corp.



more sensors, more solutions

www.bannerengineering.com - tel: 763-544-3164