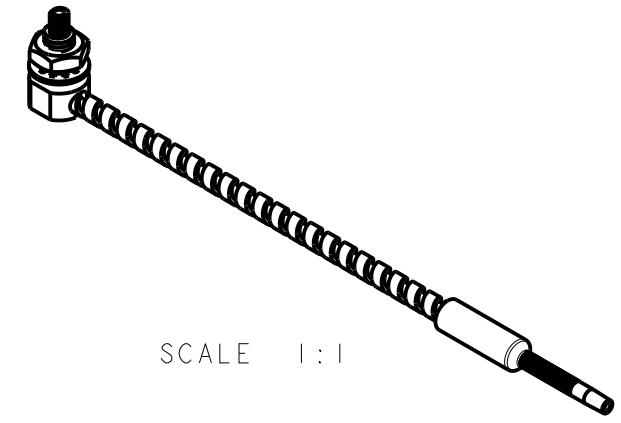
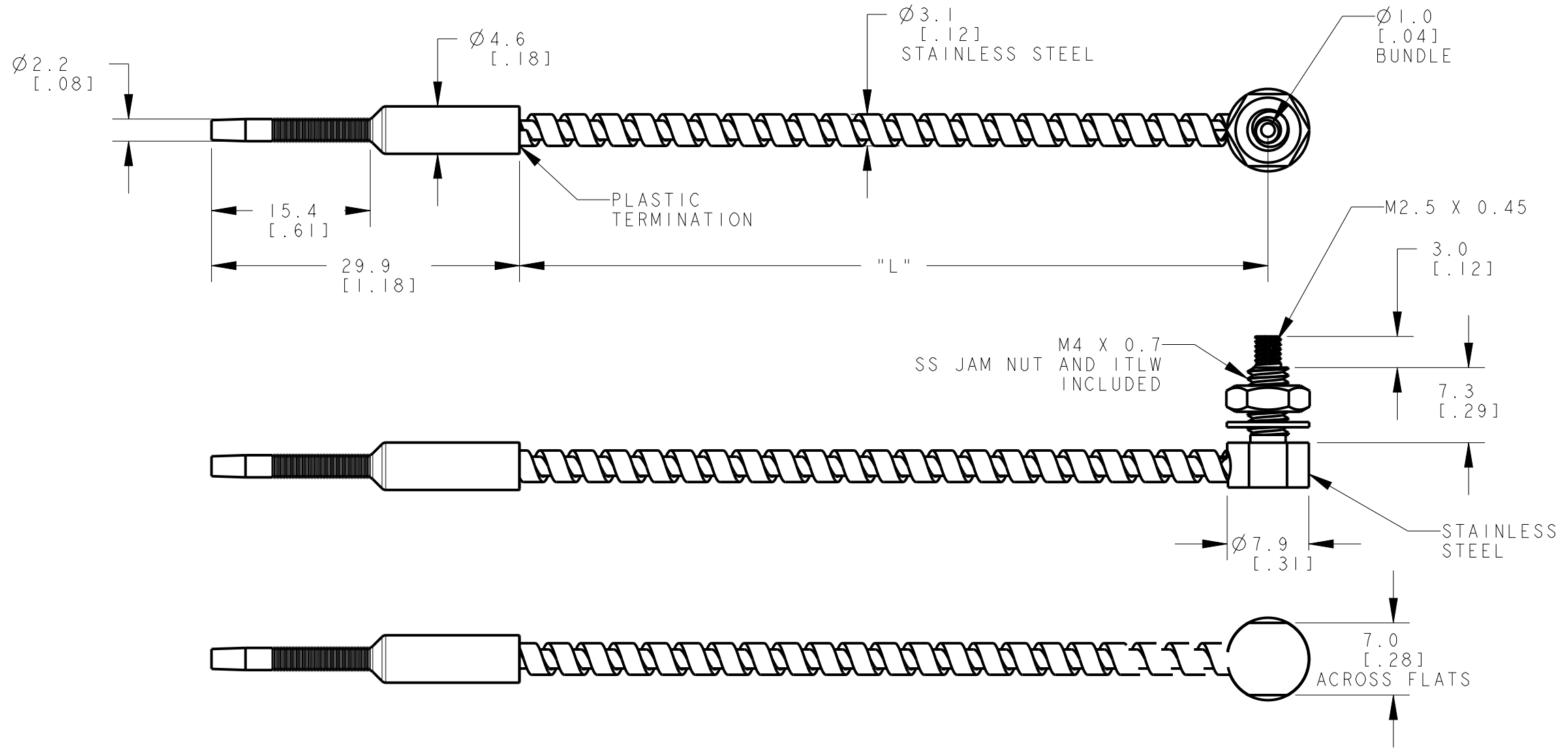


8	7	6	5	4	3	2	1
MODEL NO.	"L"	P/N	NOTES:				
IAT.616.4ST5TAM600	5000 [197]	808135	1. 'M600' SUFFIX INDICATES THAT FIBERS ARE POTTED ON THREADED END WITH EPOXY THAT OPERATES IN MAX. TEMPERATURE OF 600°F.				
IAT.613.2ST5TAM600	4014 [158]	800846					

NOTES:
 1. 'M600' SUFFIX INDICATES THAT FIBERS ARE POTTED ON THREADED END WITH EPOXY THAT OPERATES IN MAX. TEMPERATURE OF 600°F.



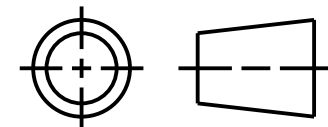
SCALE 1:1



NOTES:
 1. ALL DIMENSIONS ARE MILLIMETERS [INCHES] UNLESS OTHERWISE NOTED.
 2. REFER TO "www.bannerengineering.com" FOR ADDITIONAL DATA AND SPECIFICATIONS.

This drawing is the property of BANNER ENGINEERING CORP. Any use or reproduction, in any form, without prior written permission of Banner is prohibited. © 2015 Banner Engineering Corp.

THIRD ANGLE PROJECTION



		BANNER ENGINEERING CORP.	
		www.bannerengineering.com	
TITLE			
IAT.6 M600 SERIES SS TIGHT ANGLE TERMINATED			
SIZE	DRAWING NO.	REV.	
B	213118	A	
SCALE	SHEET		
2:1	1 OF 1		

CREO