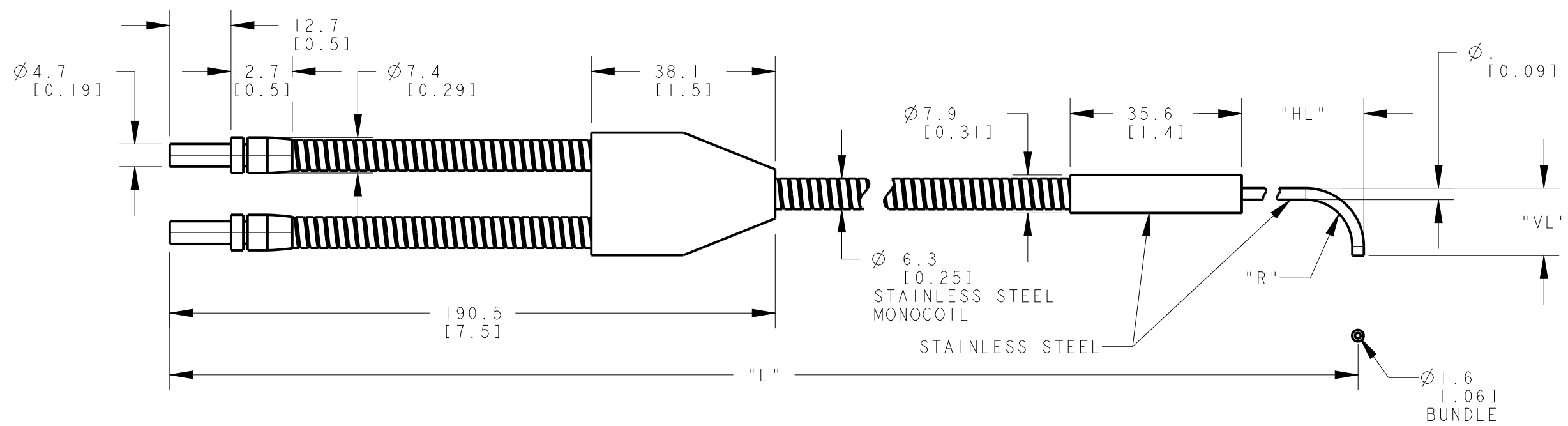


MODEL NO.	"D"	"L"	"HL"	"VL"	"R"	P/N
BP12SMA1.3X.76	.062	609.6[24]	33[1.3]	19.3[.76]	3.1[.12]	23124
BP18SMA.8X2.5	.062	2438.4[96]	20.3[.8]	62.7[2.47]	9.7[.38]	23654
BP13SMA1.3X2	.062	914.4[36]	33[1.3]	50.8[2.00]	12.7[.50]	
BP114SMA1.3X.5	.062	4267.2[168]	33[1.3]	12.7[.50]	3.1[.12]	23833
BP12SMA2.25X.75	.062	609.6[24]	57.2[2.25]	19.1[.75]	3.1[.12]	23888
BP15SMA.90X2.3	.062	1524[60]	22.9[.9]	58.4[2.3]	6.4[.25]	24059
BP12SMA2X.25	.062	609.6[24]	50.8[2]	6.4[.25]	3.1[.12]	
BP12SMA3X.25	.062	609.6[24]	76.2[3]	6.4[.25]	3.1[.12]	
BP.753SMA.4X1.1	.046	914.4[36]	10.2[.4]	27.9[1.1]	3.1[.12]	
BP12SMA1.12X.56	.062	609.6[24]	28.5[1.12]	14.2[.56]	3.1[.12]	22973
BP11.4SMA1.3X.5	.062	431.8[17]	33[1.3]	12.7[.50]	3.1[.12]	22955
BP13SMA2.2X1.1	.062	914.4[36]	55.9[2.20]	27.9[1.10]	12.7[.50]	22762
BP13SMA1X.25	.062	914.4[36]	25.4[1.00]	6.4[.25]	3.1[.12]	22690
BP13SMA3X.38	.062	914.4[36]	76.2[3.0]	9.7[.38]	3.1[.12]	22672
BP11SMA.33X2.01	.062	304.8[12]	8.4[.33]	51.1[2.01]	3.1[.12]	22661
BP11SMA.33X1.8	.062	304.8[12]	8.4[.33]	45.7[1.80]	3.1[.12]	00000
BP13SMA1.3X1.05	.062	914.4[36]	33[1.3]	26.7[1.05]	3.1[.12]	22509
BP13SMA1.3X1.55	.062	914.4[36]	33[1.3]	39.4[1.55]	3.1[.12]	22496
BP13SMA1.3X.55	.062	914.4[36]	33[1.3]	14[.55]	3.1[.12]	22495
BP13SMA1.9X1.5	.062	914.4[36]	48.3[1.9]	38.1[1.50]	19.1[.75]	22320
BP.753SMA2.3X1.9	.046	914.4[36]	59.4[2.34]	49.5[1.95]	25.4[1.0]	22027
BP13SMA3X.25	.062	914.4[36]	76.2[3.0]	6.4[.25]	3.1[.12]	21847
BP13SMA2.7X.25	.062	914.4[36]	68.6[2.7]	6.4[.25]	4.8[.19]	21678
BP13SMA2.7X.5	.062	914.4[36]	68.6[2.7]	12.7[.50]	6.4[.25]	21468
BP12SMA1X.5	.062	609.6[24]	25.4[1.0]	12.7[.50]	3.1[.12]	21130
BP16SMA1.44X1.8	.062	1785.6[70.3]	36.6[1.44]	45.7[1.80]	11.7[.46]	20745
BP11.2SMA1.8X.25	.062	355.6[14]	44.5[1.75]	3.4[.25]	3.1[.12]	20732
BP13SMA1.44X1.8	.062	871.2[34.3]	36.6[1.44]	45.7[1.80]	11.7[.46]	20506
BP12.8SMA.48X.4	.062	850.9[33.5]	12.2[.48]	10.9[.43]	3.1[.12]	20406
BP13SMA.75X.19	.062	914.4[36]	19.1[.75]	48.3[1.9]	2.3[.09]	20229
BP13SMA3X1	.062	914.4[36]	76.2[3.0]	25.4[1.0]	3.1[.12]	20190
BP12SMA1X.25	.062	609.6[24]	25.4[1.00]	3.4[.25]	3.1[.12]	20098



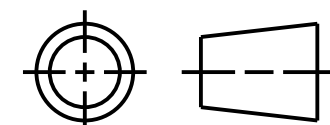
NOTES:  
 1. ALL DIMENSIONS ARE MILLIMETERS [INCHES] UNLESS OTHERWISE NOTED.  
 2. REFER TO "www.bannerengineering.com" FOR ADDITIONAL DATA AND SPECIFICATIONS.

This drawing is the property of BANNER ENGINEERING CORP. Any use or reproduction, in any form, without prior written permission of Banner is prohibited.  
 © 2015 Banner Engineering Corp.

**BANNER** BANNER ENGINEERING CORP.  
 www.bannerengineering.com

TITLE  
**BPI SMA SS**

THIRD ANGLE PROJECTION



SIZE C DRAWING NO. **212502** REV. **A**

SCALE 1:1 SHEET 1 OF 1

CREO